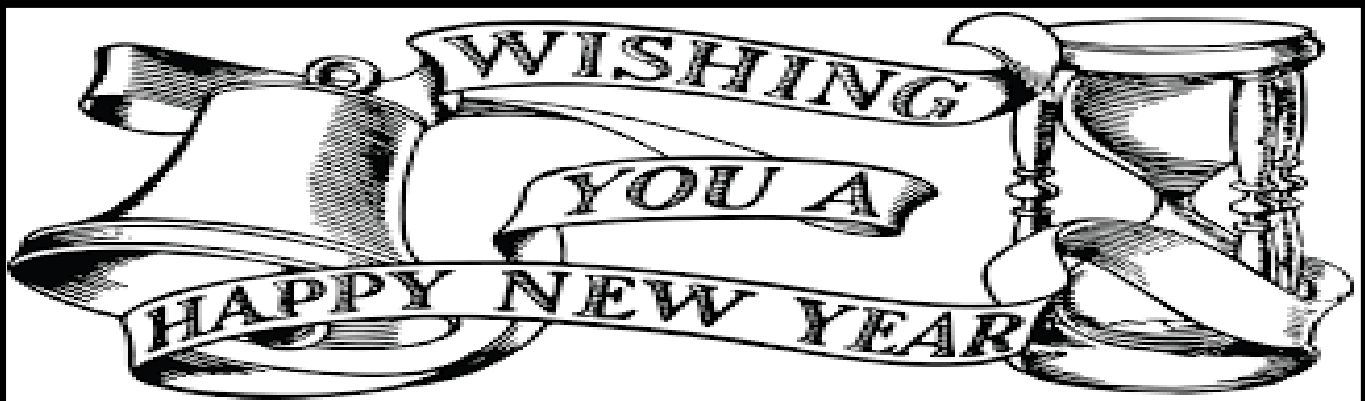
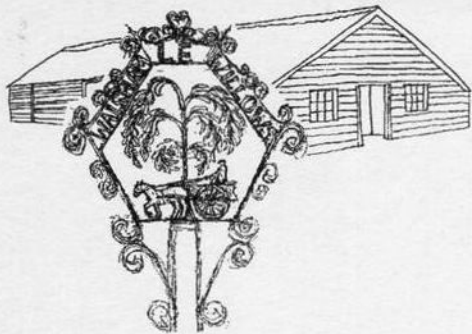


WALSHAM OBSERVER



JANUARY 2024



Walsham-le-Willows

Memorial Village Hall

Hire Charges for 2023

All Day £135
Hourly £13.50

For Bookings and Enquiries
Contact Number 01359 258698
(answerphone available)
or email
sarah@octopusadmin.co.uk



Automated External DEFfibrillator (AED)

Located in the refurbished red telephone kiosk outside the Memorial Hall this AED has been registered with the East of England Ambulance Service and can be accessed via a digital keypad. The access code can be obtained by simply dialling 999 and asking the Ambulance Service. For reference purposes the location postcode is IP31 3AA.



THE WALSHAM OBSERVER

JANUARY 2024

No 658

Published and distributed by the Walsham Community Council.

EDITOR Mr I R Toulson
01359-259646 iandmj@outlook.com

PRINTED by Gipping Press of Needham Market
Tel: 01449 721599 email: enquiries@gippingpress.co.uk
& **DISTRIBUTED** BY Volunteers

ITEMS FOR PUBLICATION

These should be dropped by **FRIDAY 15 JANUARY** into the box provided in Rolfes or emailed to the above address.

Advertisements should reach the
Advertising Manager by **MONDAY 11 JANUARY**

ADVERTISING MANAGER Cheryl Bartholomew
01359-258349 walshamobserveradverts@gmail.com

The Community Council takes no responsibility for the accuracy or otherwise of advertisements published in the Walsham Observer.

ADVERTISEMENT RATES

Quarter-page £66 per year £16.50 per month

Half-page £110 per year £22 per month

WALSHAM-LE-WILLOWS COMMUNITY COUNCIL **EXECUTIVE COMMITTEE**

CHAIR Trevor Roberts
01359-251144 acorn-house@hotmail.co.uk

SECRETARY David Murray
01359-258646 dwm599@googlemail.com

TREASURER Ian Bartholomew
01359-258349 IBarth2@aol.com

www.walsham-le-willocks.org

Contact telephone number: 01359 258698
(answerphone available)

Contact email: sarah@octopusadmin.co.uk

CONTENTS

Editorial	2	Richard Beckley	15
Walsham Observer Crossword	2	The Wild Birds of Walsham	17
Village Hall Update	3	January Church Services	17
The Mobile Library Service	3	Diary of Events	19
Searching For Words	3	Walsham Parish Council	21
Walsham Primary School	5	Wildlife in January	29
Citizens Advice	7	Green Dilemmas	31
Royal British Legion	9	Gardens Weekend Bids	31
Poppy Appeal Thank You	9	Spot the Difference	33
Community Lunch	11	Don't Quit	35
Twentieth Anniversary Lunch	11	Observer Sudoku	35
Wild Wood Winter Tale	13	Congregational Church	36
Woman's Institute	15	Sports Club Report	38
Christmas Fete	15	All the Answers	39





recycle

Your Christmas Tree

at

Four Ashes Farm entrance

Walsham Le Willows




'Real' trees can be left at this site from 7am Friday 5th January, until 7pm on Tuesday 16th January.

Trees must be less than 7' tall & must have all decorations, stands & pots removed.
Please call 03001234000 (Option 4) for further details



EDITORIAL

First of all may I wish you a very Happy Christmas (the early distribution of the January edition permitting) and a Peaceful and Rewarding New Year.

Secondly I must apologise for the somewhat distorted edition this month, but it was either that or trying to find space fillers for three extra pages.

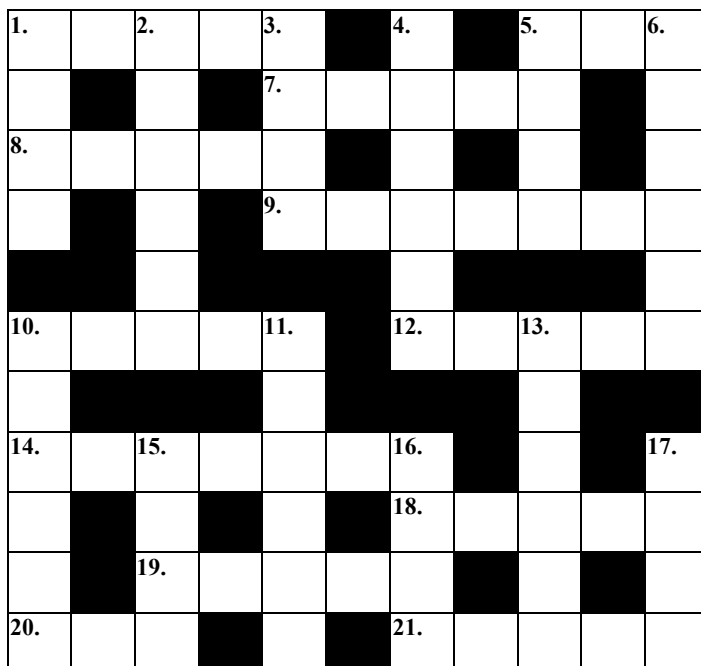
There are a number of 'important' issues in this issue, the first being the **Mobile Library Service** which would appear to be under threat, so do look at the information on **page 3**.

With regard to entertainment, the **Epiphany Singers** will be providing their annual concert on **Saturday 6th January at 7.30pm**, but do get there before then to secure a 'good' seat.

A little early push for the **Wild Wood's Curry Night on Saturday 10th February**, starting at 7.30pm. For further details look at **page 22**.

Parish Council meetings are open to the public. Anyone can attend to observe and make representations to councillors by invitation of the Chair under the usual 'Public Open Forum' agenda item. These, usually, take place on the second Wednesday of each month in the Memorial Hall from 7pm. If you are have something to say to your Councillor's do go along, your attendance would be welcome.

WALSHAM OBSERVER CROSSWORD



ACROSS

1. The sides are lively mates. (4)
5. Father might have a drink. (3)
7. Go into green terminology. (5)
8. Not so good, but swore to change. (5)
9. No tests were made for this hat. (7)
10. Edits change to feeding plans. (5)
12. Adjusts the instruments for compositions. (5)

14. Such a story about a credit arrangement. (7)
18. It sounds like the school was consumed. (5)
19. Alter itself afterwards. (5)
20. Catch this number returning. (3)
21. When the mail is sorted this country is a goner. (5)

DOWN

1. Pulls on feet we hear. (4)
2. Come to a river in turmoil. (6)
3. Views the seven maybe. (4)
4. A way to confuse the tester. (6)
5. Are they in favour of the written word. (4)
6. These are said to 'mean prizes. (6)
10. Such a beast to persuade to perform on stage. (6)
11. Crashes when searching on board ship. (6)
13. An idiot may find a foraging squirrel. (6)
15. The young horse could be a shooter. (4)
16. Maybe this bird is just an act. (4)
17. It could be before a stake. (4)

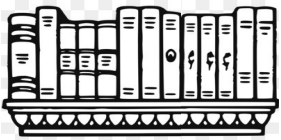
VILLAGE HALL UPDATE

Hoping everyone had a great Christmas and we wish you all a very Happy New Year
The Village Hall is always looking for new activities to promote and we are pleased to report that two new dance classes are confirmed for Mondays commencing 8th January 0930-1030 SOSA Dance classes (all ages like a fitsteps but lower impact and more dance steps) and 1900-2000 Zumba classes higher impact fitness cardio based. All other activities continue in January though Friday afternoon Pilates sessions will cease but only for January.

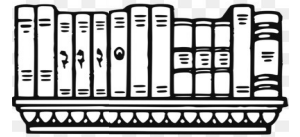
The Community Lunch to be held on 8th January will sadly see a small price increase with the cost now still a very reasonable £8 while the Thursday coffee morning will continue as usual.

We hope to do our next Picture House presentation on Friday 19th January where there could be a Scottish theme to coincide with Burns Night the following week further details in due course.

Rob Matthews



THE MOBILE LIBRARY SERVICE



The Mobile Library Service currently visits Walsham le Willows every four weeks on a Tuesday.

It starts at the Memorial Hall moves to Town House Road and then moves again to the Bus Shelter on Badwell Road.

See the village website events diary for dates and times [<https://www.walsham-le-willows.org/events/suffolk-mobile-library-service/>]

If you value this service let Suffolk County Council know before Friday 26th January 2024 as the contract is up for renewal and services may be under threat. See the village website home page for the link to the online consultation [<https://www.walsham-le-willows.org/>] or call 0345 603 1842 for a printed copy of the consultation questionnaire.

SEARCHING FOR WORDS

T	A	C
E	R	T
L	B	A

Starting with any letter and moving horizontally, vertically or diagonally, see how many words of three letters or more you can find, using each letter only once in each word.

There should be one nine letter word which might be quite manageable.

Get 45 words and you are doing well.



WEST SUFFOLK HORSEBOX SERVICES LTD



**We are a local, family run garage in Walsham-le-Willows who deal in,
Horsebox, Van, 4x4, Car and Lorry servicing and repairs.**

**Welding - Air conditioning - Car and HGV Diagnostics - Tyres
HGV MoT Preparation and Presentation
Hybrid and Electrical Qualified Technician**

**NEW to 2022. Car, Van, minibus and 4x4 MoT bay. Classes 4,5 and 7
Vehicle Collection and Courtesy Car Available, Subject to availability.**

**Unit 2, Old Bomb Store Summer Road IP31 3AJ
Telephone 01359-259994
Email wshorseboxservices@gmail.com**

WILLOWSERVE LTD

plumbing & Heating Services

- ✓ Worcester Bosch Approved Installers with up to 12 Years
Warranty on Worcester Bosh Boilers
- ✓ GASSAFE, OFTEC, C.I.P.H.E, CHECKATRADE, TRADING
STANDARDS approved
- ✓ Replacement Boilers, Hot Water Cylinders, Underfloor Heating, Servicing,
Repairs, General Plumbing, Bathrooms etc. FREE QUOTATIONS

For a Professional Reliable Service

**Tel: 01359 259886 Mobile: 07771 557937
willowserve_ltd@hotmail.com**



WALSHAM –LE-WILLOWS CEVC PRIMARY SCHOOL

We have all been working really hard this half term and getting into the swing of things with various different Christmas activities. The children from Caterpillar and Ladybird classes put on a lovely Nativity using our new stage in school and it was lovely to have so many adults come in to see the children perform.

Our theme for Collective Worship this half term has been Respect and the children have demonstrated so many different ways we can show respect to each other. As a whole school, we took some time to reflect on those who fought in World War 1. Children from Key Stage 2 competed in dodgeball and football competitions and showed respect to other teams whether they won their games or not.

The children in Caterpillar class are looking forward to their first visit to the Pantomime in January to see Snow White. They are making Christmas cards and calendars and have been looking at seasonal changes as we move into winter.

The children in Ladybirds have been learning about William the Conqueror and in maths looking at the properties of 2D and 3D shapes. In science they are looking at living things and their habitats and have been looking at animals that hibernate. They will also be writing letters to Father Christmas.

The children in Dragonflies are continuing to look at the Bronze Age and Iron Age and have made some clay pots. In computing the children are learning to use a spreadsheet and in P.E. the children have completed their swimming course this term.

Those in Grasshopper class are still exploring ‘mountains’ and have subsequently made clay mountains, water colours and printing of mountains. In their writing they have written about the Yeti myth and their mountain calligrams have been amazing.

The children in Cricket class have been continuing their focus on ‘Frozen Kingdoms’ and exploring the polar regions. In science they have been classifying living things and their habitats and in PE they have been increasing their skills in dodgeball.

We have taken part in raising money for Children in Need by wearing spots and the children all looked amazing and raised £80!

If you wish to make an appointment to visit or would like more information about our school, please contact Mrs McGarr, on 01359 259319 or by e-mail admin@walsham-le-willows.suffolk.sch.uk We would love to hear from you!

Maxine McGarr



Professional Chimney Sweeping

Chimney Matters

Town and Country

Mobile : 07767 864127

Phone: 01284 789663

www.chimneymatters.co.uk

email: chimneymatters@hotmail.com

- Open fires, Wood burners swept and serviced for maximum efficiency.
- Certificates issued.
- Cowls and Bird guards fitted.
- Fully insured.




botesdaledental
PRACTICE & IMPLANT CLINIC

Your local,
family run
**Dental
Practice**



Find us on
www.botesdaledental.co.uk



Tel: 01379897176
Email: reception@botesdaledental.co.uk
Botesdale Dental Practice, Holly Close,
The Drift, Botesdale, Suffolk IP22 1DH



Shine n Clean

Residential and commercial window cleaning.
A reliable window cleaning service using the latest
pure water and reach & wash cleaning system,
leaving glass sparkling clean for weeks.
No mess, no smears and no harmful chemicals

01359 259376

email: shinenclean@mail.com

CITIZENS ADVICE

Could you spare a morning or afternoon a week to help local people in need?

Citizens Advice Mid Suffolk support local people by providing free, confidential, independent and impartial advice. Demand for the charity's service has continued to increase, and the wonderful team of volunteers are so important to the help Citizens Advice provide.

Could you be a friendly face to greet people?

The charity are in need of volunteer receptionists to spare a morning or afternoon a week, as a friendly face to greet people who come into the Stowmarket office.

Could you help people find a way forward?

Volunteer advisers talk to local people on the phone, face to face and online to explore their problems and the options available to them.

No experience is needed for either role, as training will be given, and you will be part of a friendly team of existing volunteers supported by specialists and supervisors.

Citizens Advice volunteers come from all walks of life and choose to volunteer for a variety of reasons.

Current volunteers said:

"I volunteered to help others, but didn't realise how much I would get back! I love the feeling of satisfaction at the end of the day and the feeling you get from being part of a brilliant, friendly, professional and happy team."

"You gain skills and experience that stay with you for life. There is a great support system in place...it makes you feel like you are part of something great."

"The most enjoyable part of volunteering is seeing the difference we make. You meet a person who might be nervous and not know what will happen to them. At the end of the day they leave smiling and thanking you for all that you have done for them."

"Volunteering with Citizens Advice is not only mentally stimulating but also very rewarding."

Volunteers are Citizens Advice Mid Suffolk are often looking for ways to make use of their skills or to gain valuable experience and make use of the fantastic training. They also enjoy the opportunity to meet different people and be part of a friendly, welcoming team of existing volunteers. They find it rewarding to support local people and make a difference to their lives.

Interested in volunteering?

Citizens Advice Mid Suffolk would love to hear from you! Go to midsuffolkcab.org.uk/volunteer or call 01449 676060 for an informal chat.



CLARKES

OF WALSHAM LIMITED

✓ TIMBER & BUILDING SUPPLIES ✓ GARDEN & FENCING ✓ COUNTRY STORES



SERVING TRADE AND PUBLIC SINCE 1908



www.clarkesofwalsham.co.uk | 01359 259 259

The Street, Walsham-le-Willows, Bury St Edmunds, Suffolk, IP31 3BA

**FREE
DELIVERY
FOR ORDERS OVER
£100**

*Oil Fired Pressure Jet Boiler
Servicing & Plumbing*



**ANDY'S
OIL BOILER
SERVICES**

ANDY BACOS



07775 751303



andy.bacos@ntlworld.com



Andy's Oil Boiler Services



Which football team plays its home matches at Roker Park?



STANTON AND DISTRICT BRANCH ROYAL BRITISH LEGION.



28 members and guests enjoyed a Christmas lunch which was provided by Nigel and his staff at Stanton Cock.

At our last monthly meeting, on 12th December, it was reported that the County Standard was unfortunately damaged during the Coronation Parade in May and has to be replaced at a cost of £1,400 members agreed to donate £100 towards this.

Bacton branch will host the next “C” Group meeting on Thursday 4th January 8pm when it is hoped the final accounts will be available from the Festival of Remembrance held in November it is hoped we will be able to donate £3,500 to the Poppy Appeal from this event. The County AGM will be held in Needham Market Saturday 27th January 9.30 for 10pm.

Branch funds at time of going to press was £1819-51p

The next branch meeting will be held Tuesday 9th January in the Cock Inn Stanton at 8pm.

I would like to wish everyone the very best for 2024

Hubby Frost



POPPY APPEAL THANK YOU



This year's Poppy Appeal has been a great success again.

Firstly, I must thank all the Poppy Collectors who have done such a wonderful job again this year. Many of you bought your boxes back saying that you thought it had not been so good this year, but you all did brilliantly, and for many of you, it was actually your best collection ever — thank you all for your continued support, I couldn't manage without you.

Last year, even though I said that one shouldn't single out anyone in particular, I mentioned how well the Primary School had done—well they deserve another special mention this year, as they raised the sum of **£216.43**, which is even more than their last year total— well done and thank you to everyone at the school.

Secondly, I would like to thank everyone in the village who gave so generously. Including the donations from the Remembrance Service, the total we have collected this year so far is **£2,642.80**. There may still be a little more to come in from the QR Codes we were able to use this year, but I won't get that information until sometime in January.

Hopefully, you all noticed that there were poppies adorning the churchyard walls again this year. made the area look splendid again. Thank you Diana and James —everyone admired them and said how lovely it all looked.

TIME FOR YOU™

DOMESTIC CLEANING

Are you tired of cleaning?



We have the
right cleaner
waiting
to help
you.

Regular - Weekly - Cleaner

01359 258991

Typically £16 per hour

www.timeforyousuffolk.co.uk



CHIMNEY SWEEP



ECO SWEEP
CHIMNEY SERVICES



- POWER SWEEP METHOD USED FOR A MORE THOROUGH CLEAN THAN A BRUSH
- FULLY INSURED
- INSURANCE RECOGNISED CERTIFICATES ISSUED ON EVERY SWEEP
- GOLD MASTER MEMBER OF GUILD OF MASTER CHIMNEY SWEEPS
- ALL CHIMNEYS, WOOD/MULTI FUEL BURNERS, AGA, BOILER FLUES SWEPT
- BIRD GUARDS FITTED

TEL: (01359) 232335

EMAIL: ecosweep@live.com

FLP Motors

*Your One Stop
Friendly Garage*

- * MOT's (Class 4 & 7 Up to 3500kg)
- * MOT Repairs
- * Diagnostics
- * Servicing (Inc under 3 years old)
- * Cambelts
- * Brakes, Tyres & Exhausts
- * 4 Wheel Laser Alignment (tracking)
- * Clutches
- * Air Conditioning Servicing
- * All Repairs Carried Out

**Free Collection and return
or courtesy car available**

Call Vic: 01359 250671

Flpmotors.com

MOT's £40 with this advert (Class4)

**Unit 23a, Shepherds Grove Ind Est
Stanton IP31 2AR**

Natural Balance Reflexology and Massage

Experienced reflexologist with
advanced training in:

- Pregnancy
- Menopause
- Anxiety and Mild Depression
- Reflexology Lymph Drainage
- Hot Stone Reflexology

I also practise Full Body, Hot Stone,
Indian Head and Baby Massage.



Please contact Zoie
07968 903567

zoie.tuley@icloud.com



COMMUNITY LUNCH



Happy New Year to you all

We wish you a Happy and Healthy 2024.

Last year ended with the Christmas lunch in December that was very noisy and everyone enjoying themselves. Here's to more of the same this year.

We have managed to keep the price of Community lunch down so far but from January 2024 it will be increased to £8.00p.

The Memorial Village Hall will be open from 12.30pm on Monday 8th January 2024. Lunch will be Beef stew, herb dumplings, mashed potato, carrots and cabbage served at 12.45pm – 1pm, followed by Sticky Toffee pudding with Cream. Tea and coffee will follow.

We look forward to seeing you there.

Please book a place, at £8.00p, with Shirley on 01359 258532 by 5pm on Thursday 4th January 2024.

Shirley White



TWENTIETH ANNIVERSARY LUNCH



Q “What sort of greeting does a donkey send to his friends at Christmas?”

A “Muletide wishes of course!”

Yes the Community Council Christmas lunch had the noisy crackers, with all the jokes, tables set out with crisp white covers and colourfully decorated, ready to entertain villagers with the best of Christmas fare.

1. Reception with bucks fizz and canapes.
2. Turkey lunch with absolutely all the extras of sauces and savouries.
3. A vegetarian option - lovely they said.
4. Christmas pudding with fresh cream.
5. Coffee or tea with After Eight Mints and mini mince pies.
6. A licensed bar.

There were treats of textures for the tongue, lots of flavours to savour and colours to feast your eyes upon. Yes, there was a delay and lunch was served a little later than planned but, my word, it was beautifully cooked and so well presented nobody dared comment other than to congratulate the team of volunteers on their remarkable achievement. Sarah Cousins led the team of Karen Quinn, Sharon Rees, Debbie Licata, Shirley White, Andy Gray, Rob Matthews and David Murray.

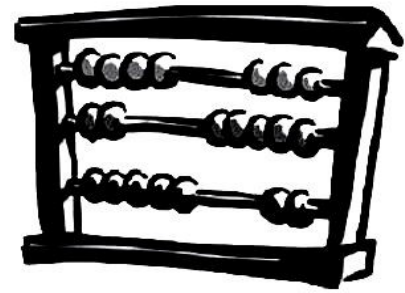
What a privilege it is to live in a community which looks after its friends and neighbours and where volunteers give so generously of their time to make a real difference.

It was in 2003 that a satellite Post Office opened in the Memorial Hall, with a Coffee Shop alongside to offer support and security for the Post Office Staff. So it is good to see the enterprise thriving twenty years on.

Rob Barber

TWINN ACCOUNTANTS LTD

We offer an **efficient and professional accountancy** service at a very competitive rate.



- ✓ Annual accounts and tax returns for Sole Traders, Partnerships and Limited Companies
- ✓ Preparation and assistance with VAT returns
- ✓ Payroll Services
- ✓ Construction Industry returns
- ✓ Management Accounts
- ✓ Tax Planning
- ✓ Company Secretarial Services

Tel: 01284 787616

Fax: 01284 787183

Email: info@twinnaccountants.co.uk

www.twinnaccountants.com

Suite 4, East Barton Barns,
Great Barton, IP31 2QY.

All accountants are not the same...we promise!

Langham Clinic®

Holistic Beauty & Complementary Therapies

Specialised treatments performed by highly trained & experienced therapists

Sports Massage - Pilates - Manicure & Pedicure
Electrolysis - Red Vein Treatment - Skin Tag Removal
Acupuncture - Oncology Massage - LaStone Therapy
Nutritional Medicine - Aromatherapy - Reflexology
Waxing - Mindfulness - Hypnotherapy - CBT

Dr. Hauschka Treatments (Holistic face & body treatments)

Everything possible at Langham Clinic is organic, sustainable & carbon neutral

www.langhamclinic.co.uk

Langham Grange, Stock Hill, Langham, IP31 3EE

Tel: 01359 258 700

THE WALSHAM WOOD'S

Winter Tale

Thank you

Firstly, a massive thank you and well done to all the volunteers who worked with the steering group to plant and mulch over 400 young trees and shrubs in November. We were very encouraged by the great turn out for our planting days which saw 37 volunteers giving approximately 98 man hours to the Jubilee Wood planting project. We were also privileged to welcome Maggie Barber's family and friends who planted a sturdy young oak in her memory. At the time of planting it still held on to a few of its golden leaves and we look forward to its new foliage in the spring.

Winter in the woods

Whilst the winter months will now be relatively quiet, there will still be some maintenance tasks. Also we are expecting our first heritage fruit trees over the dormant season to plant with our team of tree buddies when conditions allow. Some trees are still in need of a buddy so if you feel like befriending an **Adam's Pearmain** apple or a **Cambridge Gage**, just let John or Lorna know.

Pop-Up Curry Night

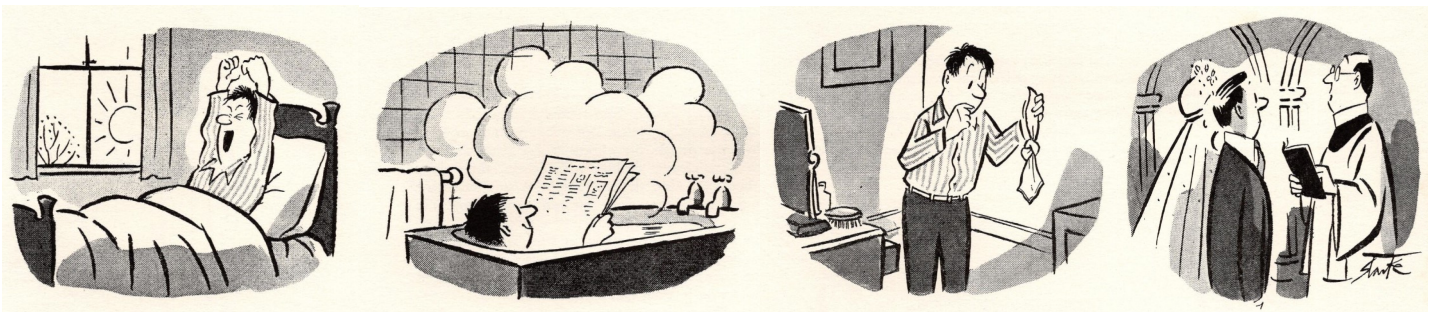
Finally, we are excited to invite you along to a Pop-Up Curry Night in the Memorial Hall on February 10th. There will be a selection of curries and exotic desserts to choose from on the night as well as a bar.

Patrick Barker, who is a local farmer making a name for himself in farming with wildlife in mind has kindly agreed to be our after dinner speaker. Patrick has inspired us on visits to his farm at Westhorpe and at talks he has given sharing his insights into the future of farming. He has been featured on David Attenborough's TV series, Saving Our Wild Isles, showing how commercial farming can adapt to help restore depleted British wildlife.

We hope to entertain, nourish and welcome up to 60 guests for the evening with all profits going to the Walsham Woods' project. Tickets are priced at £15 a head and will be available in the new year from Rolfes, the school and Lorna and John.

Lorna: mackinnonlorna@gmail.com

John: john@architectatwork.co.uk





FITNESS



CONTACT US

- lsfitness35@gmail.com
- Lewis - 07740 185204
- Sam - 07860 102306

A functional fitness inspired gym based in Allwood Green. We promote a healthy, active lifestyle through dedicated Functional Fitness, CrossFit and Personal Training for all ages and abilities within our custom built, well equipped training facility.

Units 20/21, Rickingham Business Centre,
IP22 1LQ

LS-FITNESS.COM

SERVICES

- Group Fitness Classes
- Kids Classes
- 1-2-1 Personal Training
- Sports Performance Sessions



Ordering your heating oil through **CERTAS ENERGY** can help **YOUR SPORTS CLUB**



They will make a contribution to the Sports Club of
£10 per 1000 litres or £5 per 500 litres

Call 01603 885100 (sales team)
or 01603 885236 (service team)

Every order so far placed, has been competitively priced against other
suppliers - why wouldn't you help yourself and us

“All contributions gratefully received”
says Ian Campbell (Treasurer)



WALSHAM LE WILLOWS AND DISTRICT WI REPORT



A host of golden angels hovered in the Priory Room as members transformed used tomato paste tubes into decorative Christmas tree hangings with a strong Nordic or Scandinavian element in their design. Armed with a spoon, a pencil and scissors outline shapes were soon transformed, under the guidance of a talented member. A favourite angel among the forest of trees was voted best make. After suitable seasonal refreshments, members voted for their choice of resolution from the shortlist of four. It remains to be seen which topic will be chosen with the most votes nationally. Perhaps gambling advertising, or poor housing, shortage of dentists or the sentencing of women offenders. In January members will meet to celebrate our Institute 'Birthday' with a buffet meal and doubtless some fun and games. New members always welcome!

Jill Newell



CHRISTMAS FETE

And Tree Lighting

It was below freezing on Saturday 2nd December but a huge thanks to everyone who came to help or support the Christmas Fete at St Mary's Church.

The bell ringers opened the fete and carols were sang by the School Choir and Walsham Male Voice Choir. With a countdown outside, the tree, provided by Walsham Open Gardens was lit to signal the traditional start to the Christmas season.

Thank you to our local businesses who each generously provided prizes for the raffle and to those who provided a stall and refreshments. £1,000 was raised for church funds.

We wish all readers a happy and peaceful New Year.

Tracey Gorzelak



RICHARD BECKLEY

Richard Beckley (and Freddie his dog), will be making their last journey through Walsham le Willows on Friday 5th January 2024. They will be leaving his house, 1 Elm Drive, at about 9.20am, travelling along Finningham Road and into The Street on their final 'walk'. It would be lovely to see the cortège route lined by all the people he knew and met, with their dogs, when walking around the village, completing his daily 22,000 steps, for a final 'Goodbye'

This will be followed at 12pm by a Memorial service in St Mary's Church, Walsham le Willows, and everyone is invited to attend. Thereafter, drinks and refreshments will be served in the Memorial Village Hall.

Richard's family would love all those who knew Richard to join them in this celebration of his life.

1StopBlinds

Your Local Blind Maker

- Made to Measure **Window Blinds Specialists** in and around Bury St Edmunds for over 35 Years -

STYLE, COMFORT, PRIVACY: UNVEIL YOUR HOME'S TRUE POTENTIAL WITH CUSTOM MADE WINDOW BLINDS

- ✓ Hassle-Free Measuring and Fitting Service
- ✓ Bury St Edmunds Factory Showroom
- ✓ Home and Workplace Blinds
- ✓ Blinds Made Locally in Bury St Edmunds
- ✓ Local, Family Run Business
- ✓ Over 35 Years of Experience

WE SUPPLY AND INSTALL:

Wooden Venetian
Fauxwood Venetian
Blinds for Bi-Fold Doors

Roller Blinds
Roman Blinds
Intu Blinds

Vertical Blinds
Pleated Blinds
Perfect-Fit Blinds

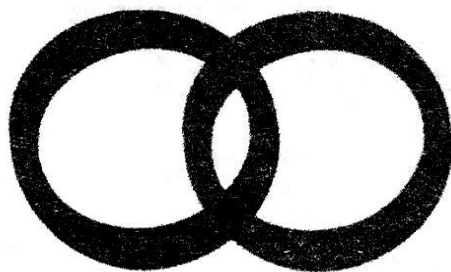
Vision Blinds
Conservatory Blinds
Motorised Blinds

For Advice and a Free, No-Obligation Quotation Book an In-Home Appointment or Visit Our Factory Showroom at:

📍 Unit 4, Brunel Business Court, Eastern Way, BSE, IP32 7AJ

Tel: 01284 761333

Email: info@1stopblinds.co.uk
Web: www.1stopblinds.co.uk



ROBINS ROW

Insurance Brokers Since 1867

AN INDIVIDUAL SERVICE FOR ALL YOUR COMMERCIAL AND PERSONAL INSURANCE

**SPECIALISING IN HIGH VALUE HOMES,
COUNTRY HOUSES, LISTED AND THATCHED PROPERTIES
AND ALL COMMERCIAL INSURANCE SOLUTIONS**

TEL: (01787) 378205

EMAIL: ADMIN@ROBINSROW.COM

HALL STREET, LONG MELFORD, SUDBURY CO10 9JB

AUTHORISED AND REGULATED BY THE FINANCIAL CONDUCT AUTHORITY



THE BIRDS OF WALSHAM



Is it really sixty years since Rachel Carson published '*Silent Spring*', her fearful warning of the elimination of so many wild birds through, *inter alia*, the use of poisonous insecticides in agriculture. Despite her doom 'n gloom it is pleasing to notice the wide variety of birdlife we still enjoy locally. A typical walk round Walsham discloses a grand selection of wild birds. Depending on the time of day/ season, a single circuit of the village (on foot or bicycle!) produces some or all of the following:

Blackbird	Gold Finch	Long Eared Owl	Tree Swallow
Blackcap	Green Woodpecker	Wood Pigeon	Swift
Carrion Crow	Greenfinch	Redwing	Blue Tit
Chaffinch	Jay	Robin	Long Tailed Tit
Chiffchaff	Kingfisher	Rook	Treecreeper
Collard Dove	Linnet	Sedge warbler	Wagtail – Grey
Stock Dove	Magpie	Skylark	Wagtail - White
Dunnock	House Martin	Starling	Woodlark
Spotted Flycatcher	Meadow Pipit	Sparrow	Woodpecker
Goldcrest	Nuthatch	Barn Swallow	Wren

I'm sure there are more.

If you haven't come across it, a very helpful tool for your circuit - mind the traffic - is an App for your iPhone, called 'Merlin'. This is free to download and is part of a world-wide study being encouraged by Cornell University in America. 'Merlin' identifies the birds by their sound! The App tells you what birds you can expect in any given area - although the Geese at *The Beeches* come up as 'exotic/unusual'!

Joe McCann



JANUARY CHURCH SERVICES

31st December	1st Sunday of Christmas	
8.00am	Holy Communion	Walsham
7th January	Epiphany	
11.00am	Holy Communion	Walsham
14th January	Sunday after Epiphany	
8.00am	Holy Communion	Walsham
9.30am	Family Communion	Westhorpe
21st January	2nd Sunday of Epiphany	
9.30am	Family Communion	Badwell Ash
11.30am	Holy Communion	Finningham
28th January	3rd Sunday of Epiphany	
11.00am	Holy Communion	Walsham
3.00pm	Evensong	Westhorpe

Do you need help with:

Personal Care
Dementia Care
Overnight Care
Help around the house
Companionship

Contact us for more
information or a brochure:



01449 678000



www.mycare-athome.co.uk


My Care
AT HOME

Providing care and
support in your
own home

RECRUITING
CARE
PRACTITIONERS
NOW!

The Priory Room

The Priory Room in Walsham
is available to hire for private functions.

For bookings or further information, please contact:

John Boulter 07908 010555 johnboulter@yahoo.com

IS YOUR COMPUTER GIVING YOU HEADACHES?

PC & Laptop Repair
Virus Removal
Diagnose Start up Problems
Replace Hard Drives
Replace Power Supplies (PC Only)
New Laptop Screens
New PC / Laptop setups

Honest - Reliable - Affordable

Contact: Jim

01359 251946

07729 868669

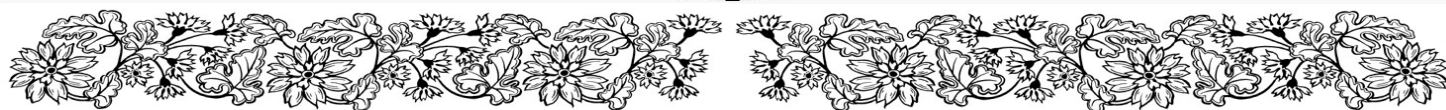
email

info@completesolutions-it.co.uk

www.completesolutions-it.co.uk

DIARY OF EVENTS

JANUARY		Priory Room 7.45pm	
Sat 5th	Epiphany Singers	MAY	
	St Mary's 7.30pm	Wed 8th	W.I. Annual Meeting
Wed 10th	WI Birthday Party		Priory Room 7.45pm
	Priory Room 7.45pm	JUNE	
FEBRUARY		Wed 12th	W.I. Wild Wood Visit
Sat 10th	Wild Wood Curry Night		Wild Wood 7.45pm
	Village Hall 7.30pm	AUGUST	
Wed 14th	W.I. First Aid Course	Sun 25th	Open Gardens All
	Priory Room 7.45	Mon 26th	Gardens Weekend Day
MARCH			
Wed 13th	W.I. Female Fashion		
	Priory Room 7.45pm		
APRIL			
Wed 10th	W.I. Floral Arrangement		



WALSHAM & DISTRICT W.I.

Birthday Party

Wednesday 10th January at 7.45pm

NEW MEMBERS ALWAYS WELCOME

Ladies are able to attend 2 meetings free of charge before joining.



THE MOBILE POST OFFICE

The Mobile Post Office will still be coming to the
Village Hall Car Park on Thursday mornings

from 11:00am till Noon till further notice.



WALSHAM SPORTSCLUB EVENTS FOR JANUARY & FEBRUARY

Sunday Night Bingo

7th & 21st January
4th & 18th February
7pm Start in the clubhouse.

New Years Eve

The club will be open from 4pm onwards for a family themed New Years Eve party with live Music from the fabulous Jo Manning. Come bring the children, relax and let your hair down.

**For further information phone
Julian 07597340273**



THE EPIPHANY SINGERS CAROL CONCERT

St Mary's Church

Walsham le Willows

Saturday 6th January 2024

at 7.30 p.m.

If you enjoy beautiful Christmas Music and the most wonderful singing, this is an event not to be missed - please put the date in your diary - all are welcome.

**This year we have a new Conductor - EDWARD CASWELL
And our organist will be - David Hill The Bach Choir London**

Tickets are not required. There is a retiring collection



WALSHAM LE WILLOWS PARISH COUNCIL MINUTES

of the meeting held on Wednesday 13th December 2023 commencing at 7.00 p.m. in the Memorial Hall.

[Pending formal approval, these minutes have been informally approved. Any further corrections will be proposed & minuted at the next meeting]

PRESENT: Cllrs. Bartholomew, Belson, Brookes, Mecrow, Tuck, Winch.

ALSO PRESENT: District Councillor R Winch;

1. OPENING - including Statement, if any
2. APOLOGIES
 - a) Cllr Roberts gave apologies due to illness. Consent was agreed.
 - b) County Cllr Fleming also gave apologies due to illness.
3. DECLARATIONS of Pecuniary & Non-Pecuniary Interests
 - a) Declarations of pecuniary, local non-pecuniary interest(s) incl. personal interests in items on the agenda including any gifts of hospitality – None received.
 - b) To receive declarations of lobbying for planning matters on the agenda – None received.
4. MINUTES - To Receive and consider the minutes of the following meetings (as previously circulated)
 - Minutes of the meeting of 22nd November 2023 were approved and signed as a true and accurate record with the correction: Minute 6 e) should have read “A proposal was received from Cllr Mecrow...”
5. REPORTS FOR INFORMATION & QUESTIONS - to receive written reports & put questions:
 - a) District Cllr Winch
 - b) County Councillor Fleming – in her absence Cllr Brooks spoke to the library consultation. She had discovered that the mobile libraries serve 500 stops across Suffolk with 25-30 individual users in Walsham le Willows, predominately in the older age groups (and younger age groups during school holidays). It was suggested that more self-publication would be a good idea. Clerk advised this is already on website. Clerk agreed to update and also publicise via social media, the Observer and the local school. Also, to ensure that Parish Council meeting are better publicised in The Observer. Cllr Brookes agreed to submit a response to the consultation for the Parish Council.
6. PUBLIC FORUM - To receive questions and matters of concern from members of the public in attendance about items on the agenda and Walsham le Willows in general.

No members of public were present.
7. PLANNING MATTERS



Curry Night

February 10th 2024 Save the Date!

Chase away the winter blues and join us at the Memorial Hall to share a selection of vegetarian curries, exotic desserts and a well stocked bar!

We are pleased to announce local farmer and ecologist, Patrick Barker as our after dinner speaker

Tickets will be available in the New Year from Rolfes and Walsham School.

Alternatively contact
mackinnon@gmail.com
hn@architectatwork.co.uk

£15

**for a selection
of curries and
a desert**

✉ mackinnonlorna@gmail.com

🌐 [walsham-le-willows wild wood](https://www.walsham-le-willows-wild-wood.co.uk)

The Old Tea Room Veterinary Surgery

For a professional caring service

Tel: 01359 241761

Station Road, Elmswell, Bury St Edmunds, IP30 9HA



A member of
Stowe Veterinary Group
www.stovevets.co.uk

- a) Matters relating to DC/22/2190/HYB Proposal Hybrid planning Location Land At Shepherds Grove Bury Road Stanton Suffolk (Jaynic and Equation proposal. – nothing to note
 - b) Matters relating to DC/23/1154/OUT Proposal to West Suffolk Planning Authority for Outline Planning Application (means of access to be considered) for demolition of existing buildings and structures to provide new employment floorspace (Classes E(g)(iii), B2 and B8) including vehicular access with all other matters reserved Location Shepherds Grove Industrial Estate East Sumner Road Hepworth Suffolk Applicant , Shepherds Grove Investment LLP – nothing to note
 - c) APPLICATION FOR PLANNING PERMISSION - DC/23/05490 Proposal: Householder Application - Erection of two storey side extension (following demolition of garage and porch) Location: 12 Wattisfield Road, Walsham Le Willows, Bury St Edmunds, Suffolk IP31 3BD **The Parish Council Made No Comment On This Application**
 - d) APPLICATION FOR WORKS TO TREE(S) IN A CONSERVATION AREA - DC/23/05502 Proposal: Notification of Works to Trees in a Conservation Area - Fell 6 No. Leylandii (G01), Fell 30 No. Leylandii (G02) and Fell 20 No. Leylandii (G03) Location: The Woodlands, Finningham Road, Walsham Le Willows, Bury St Edmunds Suffolk IP31 3BQ **The Parish Council Supported This Application**
8. PLANNING OUTCOMES (decided by Mid Suffolk District Council, Planning Authority) for noting only
- a) APPLICATION FOR PLANNING PERMISSION - DC/23/04295 Proposal: Planning application - Change of use from agricultural workshop/machinery store to commercial kitchen; including associated adjacent parking bays. (Retention of) Location: Home Farm, West Street, Walsham Le Willows, Bury St Edmunds Suffolk IP31 3AP **MSDC Granted Permission**
 - b) APPLICATION Reference: DC/23/05162 Proposal & Location of Development: Notification of Works to Trees in Conservation Area - Holly (T1) Remove tree to ground level and treat stump with eco plugs, Purple Leaf Plum (T2 and T3) - Remove trees to ground and treat stumps with eco plugs to prevent further growth. **No Notification Was Received For This Application - MSDC Raised No Objection** – The Clerk was asked to enquire as to what rights of comment the PC would have had if this had been a more important planning matter.
9. NEIGHBOURHOOD PLAN – to receive any comments from Parish Council representatives (Cllrs. Belson & Mecrow) and consider any matters arising
- a) The formal adoption of the Neighbourhood Plan on the 24th November 2023 by **MSDC Was Noted**.
 - b) The Parish Council asked the Clerk to respond to an email from Chair of Steering group, Phil Newby, to the rest of the steering group, including the two Parish Council representatives.
 - c) The Parish Council now needs to keep an eye on the number of units of housing that are added against the current housing allocation requirement for



We provide independent financial advice in the following areas:

- Savings and Investments
- Retirement Planning
- Long Term Care Plans
- Estate Planning and Family Wealth Preservation
- Mortgages
- Equity Release
- Financial Protection

10 Forbes Business Centre, Kempson Way, Bury St Edmunds, IP32 7AR

admin@metritawm.co.uk

01284 700619

Tax planning is not regulated by the FCA

Metritá Wealth Management is a trading name of Metritá Wealth Management Ltd which is an appointed representative of 2plan wealth management Ltd. It is authorised and regulated by the Financial Conduct Authority under no: 838586. Registered address: 10, Forbes Business Centre, Kempson Way, Bury St Edmunds, IP32 7AR. Registered in England and Wales under no. 11832336.



**MCS ACREDITED WITH INSURANCE BACKED WARRANTY FOR YOUR
SOLAR PV & BATTERY STORAGE REQUIREMENTS**

NAPIT & FGAS REGISTERED ELECTRICIAN OFFERING THE FOLLOWING SERVICES:

- All Electrical including Certification
- EICR (Property Testing)
- Solar PV Panels
- Battery Storage
- Electric Heating
- Air Conditioning / Heat Pumps / Electric Heating



Professional & Reliable Service



Tel: 07377 153 954

Email: contact@lectec Ltd.com

RESIDENTIAL - COMMERCIAL - INDUSTRIAL

Walsham le Willows and any future requirement. It was suggested that an initial review take place early in the new year and that this is then diarized for annual update. Clerk to add to action log.

10. PLAY AREA – consider any matters arising.

- a) Weather has impeded some of the work that needs to be done. It was agreed that another working group would meet to address minor outstanding issues at 10am on 13th January.
- b) The quote from Premier Play Solutions re replacement of post on Horizontal Swing Rope equipment (circulated 08/12/2023) was considered. It was decided that other options needed to be sought for cost comparison before the Parish Council makes a decision on how to proceed. Cllr Belson offered to make some enquiries in time for next meeting.
- c) It was agreed that the final payment (2.5% of the retained amount of the final invoice) should be paid. The Clerk had prepared this payment and it is made against the original invoice and purchase order.

11. FLOOD RESPONSE

- a) The Flood Response Group updated on position and the report was finalised and approved for submission to Suffolk County Council floods team with copies to District and County Councillors. Cllr Winch proposed, and it was agreed that the group meet again on 21st December to progress further with the evidence template that SCC flood response team will as for at some point.
Cllr Mecrow noted that he would be very interested to know, for future reference in planning applications, how the sewerage disposal system at Badwell Ash coped with the flooding on 20th October and if there was discharge of sewage into the water course, what the extent of this was compared to non-flood conditions (number of hours, volume etc). Cllr Mecrow asked if an FOI request could be submitted to Anglian Water. Clerk to investigate.
- b) Cllrs Brookes and Bartholomew had already met to discuss and updated the Council on progress with the new Community Emergency Plan. A start has been made on the introduction and outline structure. The template and guidance are still being finalised by MSDC. It was decided to enquire as to whether the final plan can list four roles or whether specific names are required to register the plan with MSDC. The Clerk thought it would be the latter. Cllr Brookes is aiming to finalise a draft plan for the January or February Parish Council meetings.

12. FINANCE & AUDIT

- a) The bank reconciliation for period ending 30th November 2023 was approved and signed.
- b) The accounts awaiting payment were approved for signature and payment. (Appendix 1).

The Council considered the request for more CIL funding by PCC prior to next bid round. It was decided to ask the PCC if they had costed alternatives, the PC would like to see a more sustainable solar powered option considered and costed. Clerk to respond.

13. CLERK & COUNCILLOR REPORTS



J W Amps Ltd



Offering service and repairs to all types and makes of garden machinery, ATV's, compact tractors etc.

Machinery bought and sold

Over 15 years experience – factory trained by Briggs & Stratton, Stihl, Westwood and Countax.

Collection and delivery service available.



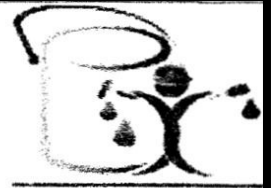
Contact Simon

Mobile 07974 430366



E-mail: simonamps@btinternet.com

Stuart Walker



Decorating, Painting & Refurbishments

A locally based company offering an honest and reliable service.

Painting - Decorating— Refurbishments - Repairs.

All work considered indoors & out! Fully Insured & free quotations provided. Please contact Stuart on Tel: 07711 606 464 or Email: stumal@hotmail.co.uk

- a) To consider and receive the updated action log for any matters of concern/note.
 - nothing of concern – a lot of routine matters coming up early in the new year.
- b) To consider anything relating to Parish Council Objectives 2023/24
 - i. Traffic calming & 20's Plenty – discussion re inviting other interested parties when next meeting is called.
 - ii. Footpaths & Permissive Paths – Cllr Mecrow raised issue of use of rough terrain bikes and the damage this is causing – no conclusion was reached on this. Cllr Bartholomew asked if there was any news on the Palmer Street footpath plans – Cllr R Winch had not heard anything yet.
 - iii. Publicity requirements for Shepherd's Grove site
- c) Cllr Winch proposed that she organise a volunteer working group early in new year to tackle some accessible lower tree branches to enable better maintenance by CGM of wider verges towards Millar's Bridge end of stream. This was agreed. Cllr J Winch noted that the stream clearance by CGM was pretty well accomplished this year; they reported that the bed of the stream was not particularly silted; the Clerk advised that communications are improving; possibility of a summer cut before gardens weekend.
- d) The Council considered invitation to respond to consultation by MSDC on the idea of Listed Building Consent orders (circulated 12/11/2023). Cllr Winch agreed to go through the NP to extract relevant policy support for a response to the online consultation which she agreed to look at as well.
- e) To consider and receive any other matters of concern/note for next agenda.
 - i. Cllr Mecrow asked for Litter Pick - to go on next agenda
 - ii. Cllr Mecrow suggested members of the PC conduct an assessment of the village assets on the Asset Register to assess condition and map locations. - to go on next agenda
 - iii. Cllr Mecrow also drew Council's attention to the West Suffolk Local Plan and the amount of housing that will be allocated that could impact on mid-Suffolk borders – to circulate link for info.
 - iv. Cllr Brookes asked if we had heard back from Cllr Fleming on the lack of road gritting on 6/12. Clerk advised it is one of the things on the list for when Cllr Fleming next attends as this should have been raised by her at the MSDC Flood committee meeting on 7th December.
 - v. Cllr Bartholomew asked if we knew how many people had received the initial £500 flood payments – Cllr R Winch was able to confirm that they would go out soon and urged PC to make sure everyone affected had seen this information including the opportunity of the £5,000 payment for flood mitigations. The Clerk advised that this was in hand and info was already on website which had been publicised via social media. Cllr R Winch advised that all who had reported were sent this information as well.
 - vi. Cllr Belson reported that two road signs on Palmer Street at Four Ashes and Crownland had wooden posts and backing plates that needed attention.
- f) Next Meeting – 10th January 2024 7pm - Memorial Hall.



M A Heating Services



- * Oil, Gas and LPG boiler servicing, replacements and repairs
- * Repairs to central heating system faults i.e. pumps, programmers and cylinders
- * Servicing and repairs to Rayburn, Aga Stanley and Esse
- * Landlord's Certificates

Telephone: 01379 783427

Wickham Gate, High Street, Gislegham, Suffolk, IP23 8JD

APPENDIX 1

Payments for Authorisation December 2023

#	Payments OUT	Amount	Description
1	Memorial Village Hall	£64.00	Hall hire two PC meetings in November
2	Premier Play Solutions	£1900.02	Final Payment of retained amount (2.5%) against PO WleW/015 for Play Area refurbishment.
3	Rachel Leggett	£468.00	Final payment for neighbourhood plan consultancy – stage 5
4	GeoXphere	£60.00	Subscription - Parish Online mapping service
5	Clarkes of Walsham	£19.97	Top soil for Play Area
6	John E Wright	£661.63	Printing for neighbourhood plan referendum and final adopted plan etc
7	Parish Council Employee	£686.25	Wages
#	Payments IN & Other Payments/Transfers	Amount	Description
	none		

WILDLIFE IN JANUARY

Let's start off this piece by wishing everyone a Happy New Year!

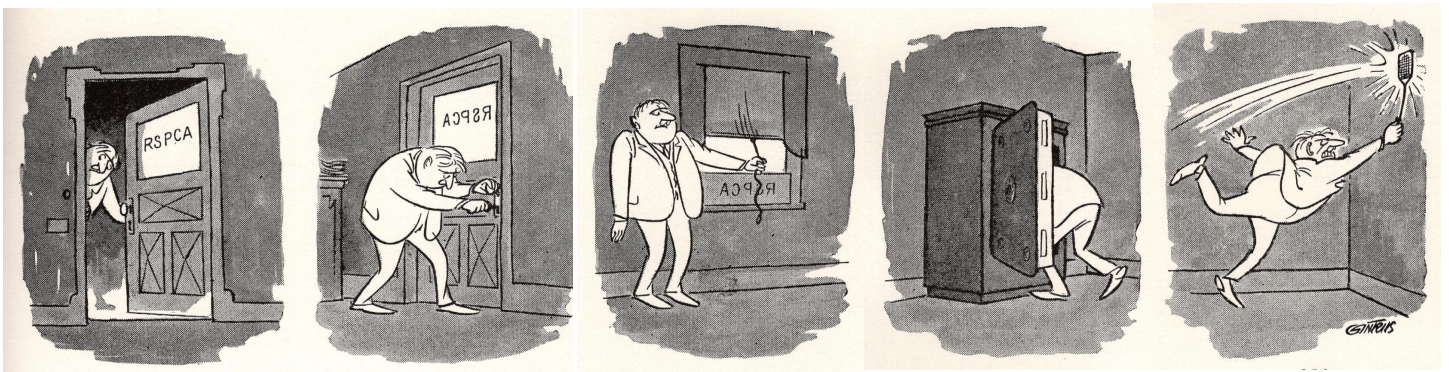
Where did last year go? We may be in January but there is still lots of wildlife to see and watch out for. January is a good month for small mammals, particularly Mice and Voles. If you sit patiently in woodland areas you can sometimes hear the scurrying of feet in the leaf litter as mice go about their business. Or sit and watch by a bank, voles at this time of the year will be busy searching for food. They will be running along the banks and parting grasses in the fields making a network of little tracks as they go. Each resident pair of voles will defend and patrol their territory during the breeding season, with territory's marked with pellet shaped droppings called Latrines, however when food is scarce they will tolerate other voles on their territory allowing for a higher density in one place.

A bird that could prey on a vole or two is the heron. Grey Herons at this time of the year will gather at a heronry in December and January. Experienced males will occupy and refurbish the old nests at this time and ward off any other rivals either by raising their crests, stretching their necks or lashing out with their beaks. Herons are frequent visitors to lakes, river and to ponds as we may know all too well if you have a pond in your garden. They can also visit flooded fields, something they did not have to look to far for last year! They will eat anything from voles, frogs, ducklings and fish. Their breeding season is fast approaching and a lot of re-nest building and calling will be heard up and down the country.

If you look into the short distance of a field or in your own garden, something may catch your eye. You will be watching a courtship dance which is being performed on the wing. These individuals are called Winter Gnats, who gather at this time of the year. Each male will ascend slightly and then will float back down into the group, and then repeat with the low winter light catching their wings as they dance. This competitive display is to attract females and they are one of the few insects that are active at this time of the year. Most people will try to avoid them but do not worry, these gnats do not bite, so do not be afraid of having a closer look.

In a quiet part of our gardens if you have a woodland type environment there could be a sleeping Hazel Dormouse. Dormice are still in hibernation at this time of the year, due to lack of food for these cute little critters which eat fruit, nuts, flowers, insects and fungi and they will stay in hibernation throughout the winter. Climate change however can disrupt their hibernation, you can help these little Dormice by creating a mini woodland like environment and leave out a few nuts, especially Hazelnuts that are most beneficial.

Angie Bennington



Sweep 'n' Clean

HETAS Registered
Wood Burning Stove Installers
Qualified Chimney Sweeps
Bird Cows Fitted
Gutter Clearing
Driveway Power Washing
Fully Insured
FREE Site Survey



Email: contactus@sweepnclean.co.uk
Web: www.sweepnclean.co.uk
Office: 01359 232955

BROWN'S



SERVICE

All Types of
Tree Surgery
Undertaken

Thinning Reductions
Deadwooding Felling
Storm Damage

All types of hedges, shrubs
and fruit trees pruned.

Seasoned logs and
woodchip mulch delivered

For a Free Quote ring
01359 259149
Mobile 07881 816761

Chainsaw Certificate
City & Guilds Qualified
Public Liability Insurance

*Oil Fired Pressure Jet Boiler
Servicing & Plumbing*



ANDY'S
OIL BOILER
SERVICES

ANDY BACOS



07775 751303



andy.bacos@ntlworld.com



Andy's Oil Boiler Services



GREEN DILEMMAS

Home Insulation

The Energy Performance Certificate (EPC) rates a property on a scale from A (very efficient) to G (inefficient). An EPC is required whenever a property is built, sold or rented, though many older properties don't have an EPC rating. The UK's housing stock is amongst the least efficient in Europe with an average rating of EPC D. Older properties (pre1930) tend to be the least energy efficient.

Heat from your house is lost in roughly the following proportions: walls 40%; the roof 25%; windows and doors 20% and the floor 15%.

Every home is different so there isn't a standard formula for insulation. For example, there is a big difference between the insulation required on detached houses versus flats or maisonettes. Also walls can be either cavity walls (there is a gap between the inner and outer layers and an insulator is inserted into the gap) or solid walls (internal and external insulation can be applied but this can be disruptive). Roofs can be insulated immediately under the roof or above the ceiling. Double glazing and draft protection can be applied to windows and doors. Floor insulation can also be possible though often floor coverings can be a simpler option.

It makes sense for everyone to review their insulation as it can save money, keep you warmer and reduce the amount of energy you are using. The problem however is that to do this for a whole properly is very expensive. It is estimated that to retrofit UK housing stock could cost up to £40 billion and would cost between £5k and £20k per property and, even then, all properties wouldn't meet the highest EPC rating.

Another problem is that care needs to be taken with insulation or there is a risk of creating issues such as damp, mould and condensation if the work is not carried out to the right quality. There is a standard called PAS 2035 which outlines how retrofit projects should be managed and delivered. Work done to this standard will be of high quality but will be more expensive than work done to building regulation standards.

If your property has a low EPC rating it should be possible in most cases to make significant improvements by installing some form of insulation. If there are grants or schemes available you should look out for them and try and find out what practical or cost-effective options you have got to improve your energy efficiency.

Richard Winch

GARDENS WEEKEND FUNDING BIDS

The bid period ends on the 31st of January 2024 and you can send them to the Hon Treasurer at garthharlow@outlook.com or drop hard copies through my letter box. We shall be taking decisions in early in February 2024.

Warm regards from the Open Gardens Team.

Collen Baker Chair of the Walsham Le Willows Open Gardens Trust

collen@cool-tech.co.uk 07831 560450



Pawfect Moments
Dog Walking & Petcare
(Badwell Ash and surrounding villages)



I am available to walk your dog/dogs, provide doggy day care, pet sitting and home visits for feeding, medication and toileting.

I appreciate that all pets are different and have a variety of needs, therefore I always start each relationship with a free home visit. I am fully insured and have attended a Canine First Aid course.

I look forward to hearing from you.....

Caroline Morris 07843 248 411

cdv_11@hotmail.com

POLLARD & CO



Builders of Integrity

TREVOR POLLARD

Millfield
Wattisfield Road
Walsham Le Willows
Bury St Edmunds
Suffolk
IP31 3BD

Tel & Fax : 01359 258339
Mobile : 07768 124715

- New Houses • Extensions • Renovations
- Barn Conversions • Refurbishments

Email: enquiries@pollardandco.co.uk

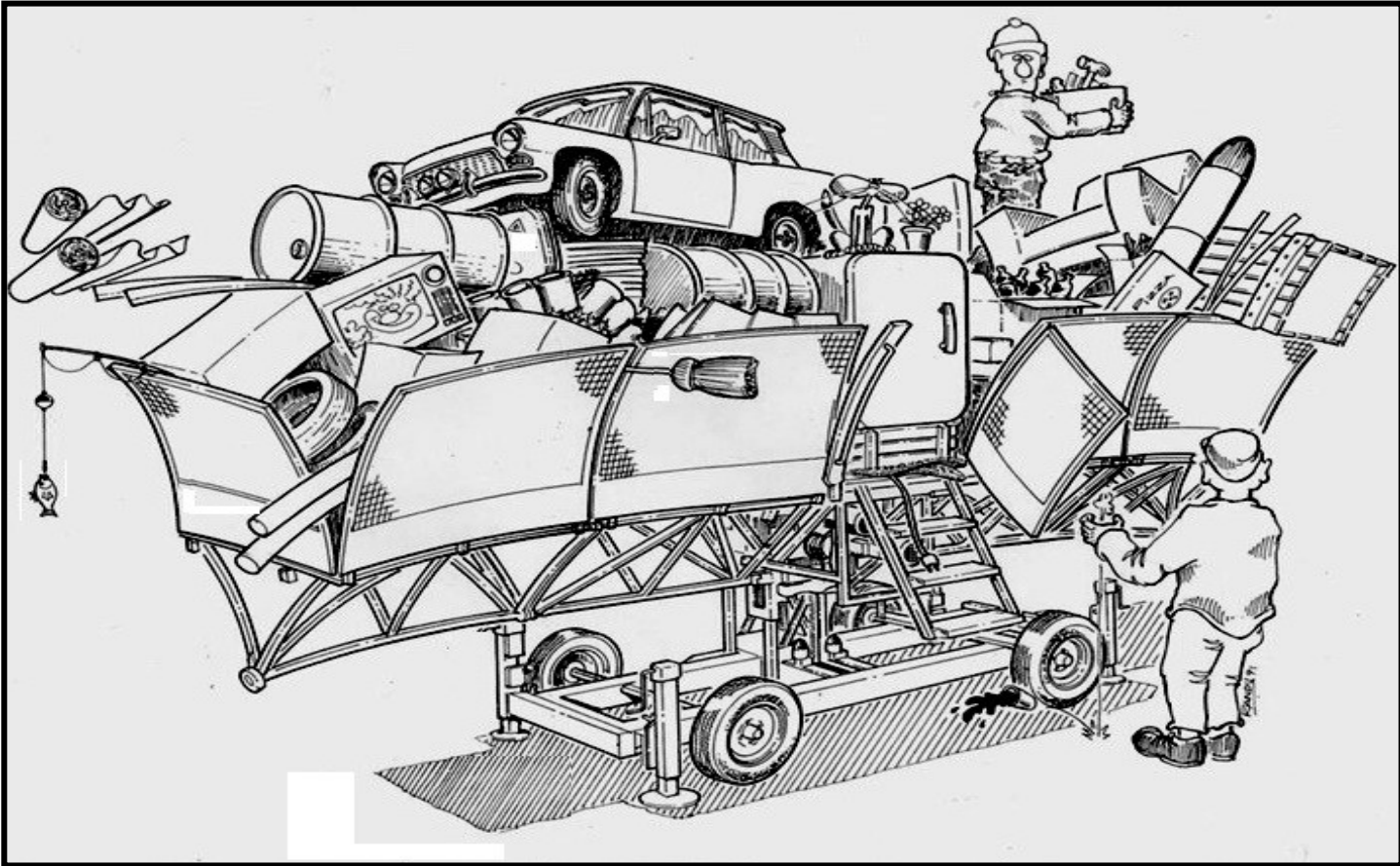
TONY FISHER
PLUMBING & PROPERTY MAINTENANCE

24Hr Emergency Callout Burst, Leaks, Blockage, etc Bathroom/shower installation
Tanks/cylinders/radiators Tiling floors/ walls Painting & Decorating
General DIY jobs Garden maintenance

Tel: 01359 242556 Mobile 07758 327743

Reliable & friendly service

A detailed black and white line drawing of a mobile home, or trailer, that is completely overwhelmed by a massive pile of household goods. The trailer is a simple wooden frame on four large wheels. On top of the trailer, a vintage car is parked, partially buried under a chaotic stack of items. There are several large metal barrels, a refrigerator, a television set, a lamp, and various boxes and bags. A man in a hard hat and work clothes is perched on top of the pile, holding a box. Another man, wearing a cap and overalls, stands at the back of the trailer, looking at a set of plans or a map. The scene suggests a move, a storage problem, or a life of extreme clutter. The drawing is done in a classic, somewhat whimsical style with cross-hatching for shading.



33

Which ocean separates Europe from the USA?

GROUNDWORK & PLANT HIRE

- Mini Digger & Driver for Hire
- Block Paving & Patios
- Extension Bases
- Driveways & Pathways
- Drainage Work
- Footings & Oversites
- Gardens & Site Clearance

C.S. CONTRACTORS

01284 724048 / 07720843577

108 Horringer Road Bury St Edmunds
IP33 2DP

www.cs-contractors.co.uk



Elite Fencing and Landscaping

JUST 10 MINUTES AWAY FROM YOU.
FENCING, GATES, DECKING, PATIOS,
PERGOLAS, PATHS, BASES,
TURFING, DEMOLITION,
REGRAVELING DRIVEWAYS,
GARDEN CLEARANCE,
GARDEN PROJECTS & RESTORATION,
REPAIRS, ODD JOBS & MORE!

ALL TYPES OF OUTDOOR WORK
UNDERTAKEN - SMALL OR LARGE
FOR FREE ESTIMATES CALL TREVOR
ON 01359 221128 OR 07761651567

EMAIL

TREVOR@ELITE-FENCING.CO.UK
WEB: WWW.ELITE-FENCING.CO.UK

N & S PEST CONTROL — SERVICES —

RATS! MICE! RABBITS! MOLES! BIRDS! WASPS!
FLIES! ANTS! SQUIRRELS! & MINK!

All effectively controlled by

Norfolk & Suffolk Pest Control
Chris Earith, 2 Orchard Lane,
Pakenham, Nr. Bury St. Edmunds,
Suffolk. IP31 2LQ

Phone: 01359 232538 Mobile: 07885 745446



All forms of landscaping and garden
maintenance undertaken

- Patios & paving
- Grass cutting
- Fencing
- Garden edging
& retainers
- Decking
- Shed bases

For a free quote contact

07931089125

contact.jblandscapes@gmail.com

DON'T QUIT

When things go wrong, as they sometimes will,
When the road you're trudging seems all up hill,
When the funds are low and the debts are high,
And you want to smile but you have to sigh,
When care is pressing you down a bit,
Rest if you must - but don't you quit.

Life is queer with its twists and turns,
As every one of us sometimes learns,
And many a failure turns about
When he might have won had he stuck it out;
Don't give up though the pace seems slow -
You might succeed with another blow.

Often the goal is nearer than
It seems to a faint and faltering man,
Often the struggler has given up
When he might have captured the victor's cup,
And he learned to late, when the night slipped down
How close he was to the golden crown.

Success is failure turned inside out -
The silver tint of the clouds of doubt -
And you never can tell how close you are,
It may be near when it seems afar;
So stick to the fight when you're hardest hit -
It's when things seem worst that you
Must not quit!

WALSHAM OBSERVER SU-DOKU

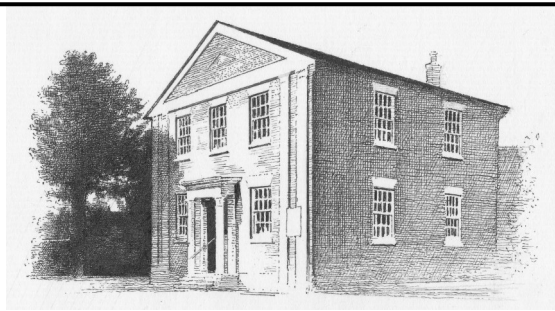
	6							7
		4	7	8				
		9			6	1		8
				9	7		5	
	4		8			7		2
	3		1	4				
3		6	9			4		
				1	4	6		
2							3	

For the uninitiated, the rules of Sudoku are very simple.

Each row, column and large square must contain the numbers 1 to 9 inclusive.

It's as simple as that, but you must apply logic to find which number goes where.

So, beginner or expert, happy hunting!



Walsham Congregational Church

The Street, Walsham-le-Willows, Suffolk. IP31 3AZ

Church Secretary (John Landymore)

01359 - 258986

We are open for worship each Sunday at 11.00 & 6.30 so why not come along? Please be assured of a warm welcome; it would be lovely to see you.

Resolution.

As time continues to relentlessly roll by, we pass in many ways imperceptibly from one year to the next; creation becomes another year older, and the second coming of the Lord Jesus Christ moves another year nearer. However, the change of a year does feel a particularly notable time, a time that is marked and celebrated by billions of people across the face of our world. Another year of our lives may have slipped away, but we stand at the threshold of a New Year.

Any anniversary can stir in us many thoughts and memories, but the change of year can particularly be a time to reflect upon the past, take stock of the present, and look to the future. It is a natural time of reflection and of new beginnings, even the very month of January is named after Janus, the Roman 'god' of beginnings and transitions who is depicted as a two-faced man: one face surveying the year passed, and the other viewing the new year ahead. It is surely no bad thing to reflect and take stock of life, learn from the past and look to the future in things both physical and spiritual. The Bible suggests: ***"Examine yourselves, whether ye be in the faith"*** (2 Corinthians 13:5), and King David asks: ***"Search me O God, and know my heart: try me, and know my thoughts: and see if there be any wicked way in me, and lead me in the way everlasting"*** (Psalm 139:23-24).

Some may be thankful for great blessings during 2023 but many will welcome the New Year as an opportunity for a fresh start, to start with a 'a clean slate', to 'turn over a new leaf', or make ambitious New Year Resolutions, hoping that the year to come will be an improvement on that which is passed. Regret and sad memories can be painful to bear, but the real and lasting problem we face, whether we realise it or not, is a conscience troubled by sin and not being in a right relationship with God, ***"For all have sinned, and come short of the glory of God"*** (Romans 3:23). Commendable though it be to strive to reform or better oneself at any time of year, no self-reformation alone can earn merit with God or forgiveness of sin: only God can do this: ***"Who can forgive sins but God only?"*** (Mark 2:7). Even if we seek to emulate the perfect life of Jesus Christ ***"Who went about doing good"*** (Acts 10:38) it will never be enough ***"For by grace are ye saved through faith; and that not of yourselves: it is the gift of God: not of works, lest any man should boast"*** (Ephesians 2:8-9).

The rewards of a well lived life are only for a lifetime and, as Jesus said of some in his day, ***"They have their reward"*** (Mathew 6:5) but of those who love, trust, and serve the Lord Jesus Christ as their Saviour it can be said, ***"Rejoice, and be exceeding glad: for great is your reward in heaven"*** (Matthew 5:12). May this then be the year, no, even the day of resolution to seek and find Christ who, ***"stedfastly set his face to go to Jerusalem"*** (Luke 9:51) to die upon the cross, bearing burden and just punishment of all the sin of all those that shall come to him in repentance and faith, that they shall be with him for all eternity.

Behold, now is the accepted time; behold, now is the day of salvation.

(2 Corinthians 6:2)

REGULAR

MONDAY

Community Lunch Village Hall
2nd Monday 12:45pm
Walking Football Sports Club
8:00pm till 9:00pm

TUESDAY

Walking Netball Sports Club
10:00am till 11:00am
Pilates Class Village Hall
1:30pm till 2:30pm
Walking Football Sports Club
2:00pm till 3:00pm

WEDNESDAY

Pilates Classes Village Hall
9:00am till 10:00am
10.15am till 11.15am
Yoga Sports Club
10:00am till 11:30am
Positive Steps Sports Club
11:30am till 12:30pm
Wednesday Wanders Sports Club
11:30am till 12:30pm
Carpet Bowls Sports Club
2:30pm till 4:00pm
WI Meeting Priory Room
7:45pm Second Wed of the Month

EVENTS

Parish Council Village Hall
(Public Meeting)
7.00pm Second Wed of the Month

THURSDAY

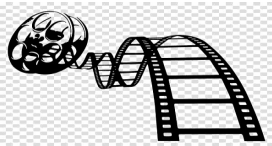
Coffee Shop Village Hall
10:30am till 12.30pm
Post Office Van Village Hall
11:00am till Noon
Yoga Sports Club
1:15 pm till 2:15pm
Walking Football Sports Club
2:00pm till 3:00pm
Pétanque Sports Club
2.00pm till Bouled Out
Walking Netball Sports Club
6:00pm till 7:00pm

FRIDAY

Cardio Tennis Sports Club
12noon till 1:00pm

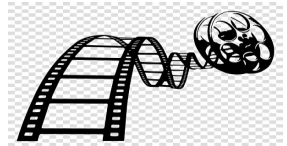
SATURDAY

SUNDAY



STANTON VILLAGE CINEMA

Friday 12th January at 7:30pm



WHAT'S LOVE GOT TO DO WITH IT? (12A)

Starring Emma Thompson & Lily James

Tickets on the door, adults £5.00—under 17's: £3.00

Tea/coffee and refreshments

Future films will be shown on the second Friday of each month.

Graeme Green Electrical Services Ltd

A local Electrician, qualified with 20
years experience.
Offering a friendly and reliable service.

Residential and Commercial.
Fully Insured.

Available for all of your jobs large
or small.

For a free quote call or email
Graeme.

Email: graemegreenelectrical@gmail.com
Call: 07950 335966



**Special cakes
for
special celebrations**

Jean Barker 01359 241135

www.amazingcakesbyjean.co.uk

SPORTS CLUB REPORT

Football

The weather has played havoc with the fixtures of all our sides in recent games. The First Team won their last home league game beating bottom club Long Melford 4-1. Sam Nunn, Jack Brame and a brace from Charlie Norman accounted for our goals.

Our latest game saw us progress to the fourth Round of the FA Vase with a 3-2 home victory over Essex side White Ensign. We now play hosts to either Tilbury or Saffron Walden Town on 13th January.

In the Suffolk Under 18s Midweek Cup we beat a strong Needham Market team 5-4 on penalties following a 1-1 draw.

The Vets also won their latest cup tie on penalties following a 1-1 draw.

Home fixtures for January 2024

First Team

Sat 6th v Harleston Town 3pm Sat 13th v Tilbury or Saffron Walden Town. 3pm

Under 23rs

Tues 9th v Woodbridge Town. 7.45pm. Sat 20th v Hadleigh. Kick off TBC.

Under 18s

Thur 18th Under 18s v Newmarket Town. 7.45 pm

A Happy New Year to all Observer readers

*Gordon Ross
Walsham le Willows FC Secretary*

ALL THE ANSWERS

Page Bottom Quiz

1. The Humber, 2. The cockpit, 3. The albatross, 4. In Utah USA, 5. The terrier,
6. Three years, 7. The Romans, 8. Sunderland, 9. Gone With the Wind, 10. Four,
11. Deep sea divers, 12. The law, 13. Charlie Chaplin, 14. Paris, 15. Kindergartens,
16. The Beach Boys, 17. Leonardo da Vinci, 18. March 1st, 19. Seven,
20. A semi-breve, 21. Bird's nests, 22. Buster Keaton, 23. The Cultural Revolution,
24. Charles Darwin, 25. Caught and bowled, 26. An alligator, 27. 1773,
28. Edinburgh, 29. Kate Bush's, 30. Columbia, 31. Trygve Lie, 32. The tenor,
33. The Atlantic, 34. The can-can, 35. Wavelengths, 36. Golf (A free shot),
37. Oysters, 38. Palm Sunday, 39. *From Russia With Love*, 40. Thumbs up,

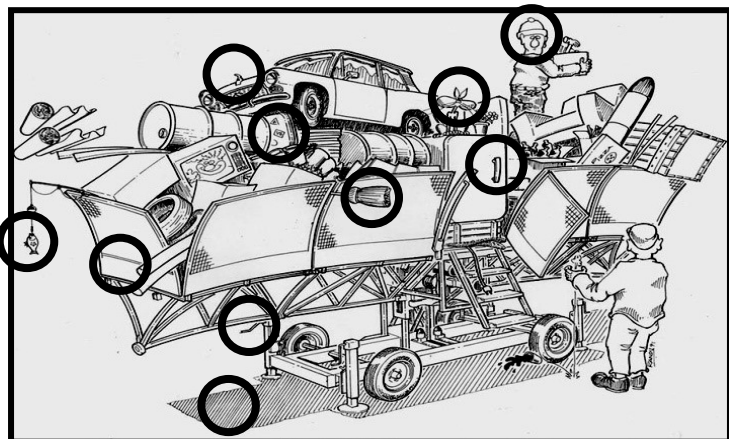
Sudoku

8	6	3	4	5	1	2	9	7
1	2	4	7	8	9	5	6	3
5	7	9	2	3	6	1	4	8
6	1	2	8	9	7	3	5	4
4	9	8	6	5	3	7	1	2
7	3	5	1	4	2	9	8	6
3	5	6	9	2	8	4	7	1
9	8	7	3	1	4	6	2	5
2	4	1	6	7	5	8	3	9

Crossword

T	E	A	M	S		S		P	O	P
O		R		E	N	T	E	R		O
W	O	R	S	E		R		O		I
N		I		S	T	E	T	S	O	N
		V				E				T
D	I	E	T	S			T	U	N	E
R				H						
A	C	C	O	U	N	T		T		A
G		O		N		E	A	T	E	N
O		L	A	T	E	R		E		T
N	E	T		S			N	O	R	S

Spot the Difference



Searching for Words

Abet	Able	Act	Arc
Are	Area	Art	Ate
Bar	Bare	Bat	Bate
Bear	Beat	Bet	Beta
Bleat	Bra	Brat	Car
Care	Caret	Cart	Cat
Cater	Crab	Crate	Ear
Earl	Eat	Era	Eta
Leat	Let	Rat	Rate
React	Ret	Tab	Table
Tablet	Tact	Tar	Tare
Tart	Tat	Tea	Teat
Tear	Tract	Treat	
Tractable (52)			

USEFUL TELEPHONE NUMBERS

Community Council Secretary
David Murray 01359-258646

Police
Suffolk Police 01473-613500
Stowmarket 01473-383400

Neighbourhood Watch

Surgeries
Ixworth 01359-230252
Stanton 01359-251192
Botesdale 01379-898295
Woolpit 01359-240298

Parish Council Chair
Richard Belson 01359-258868
richardbelson@btinternet.com
Parish Council Clerk
Kevin Boardley parishclerk@walsham-le-willows.org

Anglian Water
Emergencies (24hr) 08457-145145
Accounts 0800-919155

Eastern Electricity 0800-7838838

British Telecom
Customer Service 150
Line Faults 151

District Councillor
Richard Winch 07931709486

County Councillor
Mrs Jessica Flemming 01449-711065

Suffolk County Council 03456-066067

Member of Parliament
Jo Churchill 0207-2198487

VILLAGE ORGANISATION CONTACTS

Allotments Group
Mel Wasley / Debbie Licata
walshamallotments@gmail.com

History Group
Frances Jenner 01359-259242
frances.jenner@hotmail.com

Horticultural Show
Debbie Licata 01359 259686
debbiewatson2916@gmail.com

Sports Club
Mike Powles 07379089890
mike.powles@btconnect.com

Walsham Wild Wood
Lorna MacKinnon 01359 259140
mackinnonlorna@gmail.com

Women's Institute
Pippa Baxter 01449781757
pippabaxter2@gmail.com

Community Yoga
Julia Dunncliffe 07980 476 140
dunnicliffej@hotmail.com.



Make your home a little cosier this winter!

Need to upgrade your draft proofing, loft or cavity wall insulation?

Apply for a FREE Mid Suffolk Cosy Homes installation.



www.midsuffolk.gov.uk/w/mid-suffolk-cosy-homes

Save energy, money and reduce your
carbon footprint

Terms and conditions apply

