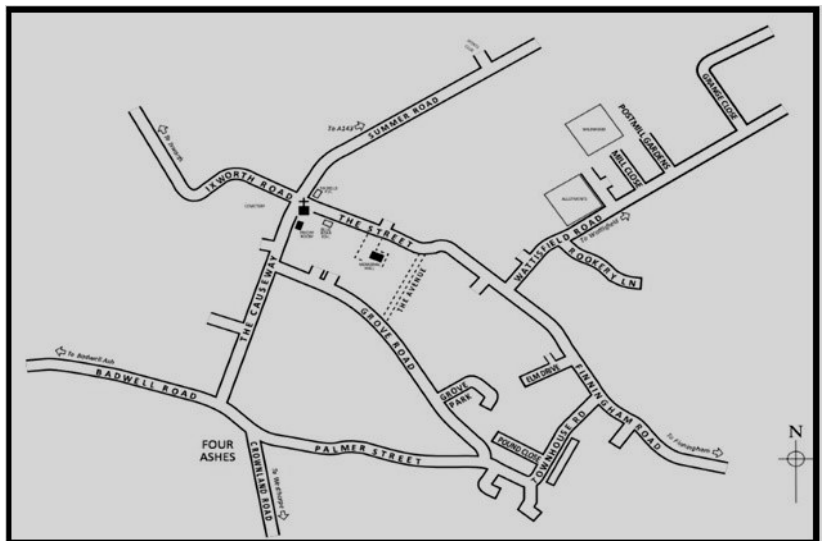


WALSHAM OBSERVER

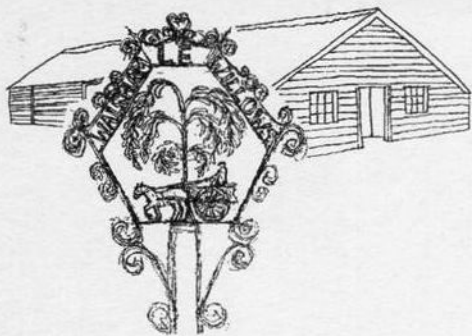


20's Plenty for Suffolk
Have your say...



Encourages walking and cycling
Fewer casualties and collisions
Less air and noise pollution
Lower costs

OCTOBER 2023



Walsham-le-Willows

Memorial Village Hall

Hire Charges for 2023

All Day £135
Hourly £13.50

For Bookings and Enquiries
Contact Number 01359 259698
(answerphone available)
or email
sarah@octopusadmin.co.uk



Automated External DEFfibrillator (AED)

Located in the refurbished red telephone kiosk outside the Memorial Hall this AED has been registered with the East of England Ambulance Service and can be accessed via a digital keypad. The access code can be obtained by simply dialling 999 and asking the Ambulance Service. For reference purposes the location postcode is IP31 3AA.



THE WALSHAM OBSERVER

OCTOBER 2023

No 655

Published and distributed by the Walsham Community Council.

EDITOR Mr I R Toulson
01359-259646 iandmj@outlook.com

PRINTED by Gipping Press of Needham Market
Tel: 01449 721599 email: enquiries@gippingpress.co.uk
& **DISTRIBUTED** BY Volunteers

ITEMS FOR PUBLICATION

These should be dropped by **FRIDAY 22 OCTOBER** into the box provided in Rolfes or emailed to the above address.

Advertisements should reach the
Advertising Manager by **MONDAY 18 OCTOBER**

ADVERTISING MANAGER Cheryl Bartholomew
01359-258349 walshamobserveradverts@gmail.com

The Community Council takes no responsibility for the accuracy or otherwise of advertisements published in the Walsham Observer.

ADVERTISEMENT RATES

Quarter-page £60 per year £15 per month

Half-page £100 per year £20 per month

WALSHAM-LE-WILLOWS COMMUNITY COUNCIL **EXECUTIVE COMMITTEE**

CHAIR Trevor Roberts
01359-251144 acorn-house@hotmail.co.uk

SECRETARY David Murray
01359-258646 dwm599@googlemail.com

TREASURER Ian Bartholomew
01359-258349 IBarth2@aol.com

www.walsham-le-willocks.org

Contact telephone number: 01359 258698
(answerphone available)

Contact email: sarah@octopusadmin.co.uk

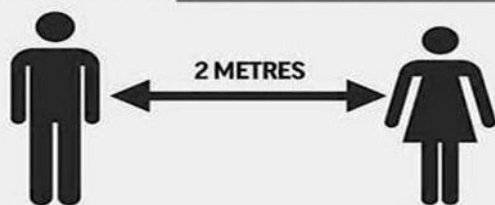
CONTENTS

Editorial	2	More or Less	19
Village Hall Update	3	Open Gardens Weekend	21
Our Neighbourhood Plan	3	Volunteering	23
Palmer Street Pavement	3	Walsham History Group	25
Walsham Primary School	5	Diary of Events	27
In Remembrance of Maggie	5	Parish Council Minutes	29
Royal British Legion	7	Wildlife in October	35
Community Lunch	7	Green Dilemmas	37
Women's Institute	9	The Wrap Party	39
Observer Sudoku	9	Sports Club Report	41
Citizens Advice	11	Congregational Church	42
Dementia Friends	13	The Setting Sun	43
Searching for Words	13	Observer Crossword	45
Walsham Wild Wood	15	October Church Services	45
Open Gardens Catering	17	All the Answers	47
Common Ground Theatre Co.	19		



WHEN WALKING IN THE VILLAGE

**YOU NEED TO STAY 2 METRES
APART TO SAVE LIVES NOW**



Please take the 2 meter distancing rules seriously. This protects everyone. It is a simple and very much appreciated courtesy and no one will take offence.

If you pass people with children, or elderly people who may not be as agile, please give some thought to how much easier it may be for you to cross the road to maintain a social distance of at least 2 metres from them.

EDITORIAL

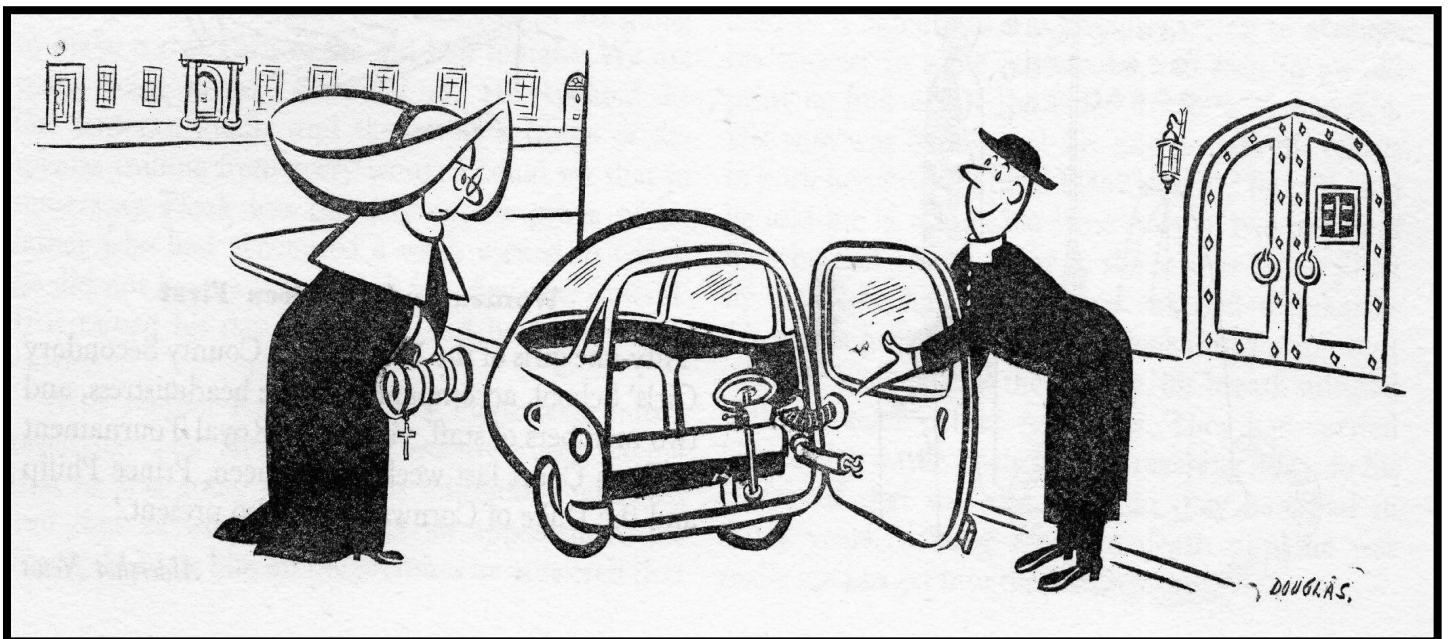
I trust that there are not too many mistakes in this edition of the Observer. We have just had a few days away in East Yorkshire and on our return I had to put the edition together overnight so that there was not too much of a delay before you received your copy, unless you read this online. Apart from the order being a bit different, there is no Spot the Difference this month, as I had not got enough time to find a picture and then mangle it!!

However there is plenty of other events to keep you occupied. The **W.I.** has a talk by a **Bomb Disposal Officer on Wednesday 11th October**. Full details for this event can be found on **page 9**. The following evening, **Thursday 12th, Common Ground** will performing their play **The Hellgate Club**. Do look at **page 28** to find out how to obtain tickets. There is a concert, featuring **The Abbot Concert of Voices, at St Mary's on Saturday 14th October at 7.30pm**. Having delved back into the not so distant past with a showing of the film **Akenfield** in their last meeting, the **History Group** have a talk on **The Suffolk Bevin Boys on Wednesday 18th October at 7.30pm**. At the end of the month there are two celebrations of Halloween at opposite ends of the village. **Walsham Wild Wood** are holding their annual **Pumpkin Trail** at The Wild Wood on **Saturday 28th October at 5.00pm**. Maybe both events can be attended as the **Sports Club's Halloween Disco** doesn't start until 7.00pm. For full details of this event look at **page 41**.

I received two emails last month concerning that frequently raised problem of dogs. Not this time the issue of deposits on footpath and pavements, as well as the odd bush decorated with polythene baubles. No this time it was about the liquid variety and the sometimes inappropriate location for such releases front doorsteps and bus shelters. When Fido, Mutley or Rover are about to water the ground do make sure that it is not going to offend.

This month's edition is quite full. Do keep the articles coming in and should you wish to advertise an event do let me know in good time so that an advert can be put in.

Do take the time to complete the very short questionnaire about a reduction in the speed limit in various areas of the village. Traffic flow through the village is a frequent cause of concern to many so do take this opportunity to let your feelings be known.



VILLAGE HALL UPDATE

During the course of October the usual bookings continue including self- defence and Pilates classes as well as our usual coffee morning on a Thursday and the Community Lunch on the second Monday of the month.

In addition, the Common Ground Theatre Company present a gothic murder mystery 'The Hellgate Club' by Pat Whymark in the Memorial Hall on Thursday 12th October at 7.30pm

At the last meeting of the Village Hall Committee we extended a vote of thanks to Gordon Riddock who volunteered to take on the responsibility of tidying up the Village Hall Garden and visitors will see what a great job he has done. We must also thank Andy Allington who for some months now has cut the grass around the Hall to keep the surrounding area neat and tidy. It's great to have such volunteers and we thank them for their efforts.

In the light of the increased costs in energy prices your committee is looking into the possibility of getting solar panels put on the roof which would reduce our expenses, more of this later.

Rob Matthews

OUR NEIGHBOURHOOD PLAN

The Referendum

The Walsham le Willows Neighbourhood Plan is now in the very final stages of its development, and having been scrutinised in great detail by the Local Planning Authority (MSDC), and a wide range of statutory consultees, it has gone before an independent examiner. Final amendments to the Plan are currently being made.

The last step will be to hold a Referendum, where all registered electors in the parish will have the opportunity to vote, either to accept or to reject the Neighbourhood Plan. It is extremely important that people use this opportunity, as it is the outcome of the referendum which will decide if the Neighbourhood Plan is adopted.

At present we do not know when the referendum will take place, but it is likely to be sometime in the autumn - so please watch out for the date and the voting arrangements.

Richard Belson

Chair of Parish Council

PALMER STREET PAVEMENT

Approved By Mid Suffolk Council

Mid Suffolk District Council has agreed to fund a new pavement along Palmer Street where there is currently no pavement. This is part of a change by Mid Suffolk District Council to allow the use of CIL money (money from developers) to pay Highways directly for improvements in walking and cycling routes in our villages.

The new pavement will join up a significant part of the village which at the moment really isn't very safe for pedestrians. This will be good news if you want to walk from Palmer Street to the centre of the village, for dog walkers, for anyone walking a pushchair round the village and for wheelchair access.

The plan was initiated by Walsham le Willows Parish Council after concerns raised by residents.

Richard Winch



WEST SUFFOLK HORSEBOX SERVICES LTD



**We are a local, family run garage in Walsham-le-Willows who deal in,
Horsebox, Van, 4x4, Car and Lorry servicing and repairs.**

**Welding - Air conditioning - Car and HGV Diagnostics - Tyres
HGV MoT Preparation and Presentation
Hybrid and Electrical Qualified Technician**

**NEW to 2022. Car, Van, minibus and 4x4 MoT bay. Classes 4,5 and 7
Vehicle Collection and Courtesy Car Available, Subject to availability.**

**Unit 2, Old Bomb Store Summer Road IP31 3AJ
Telephone 01359-259994
Email wshorseboxservices@gmail.com**

WILLOWSERVE LTD

plumbing & Heating Services

- ✓ Worcester Bosch Approved Installers with up to 12 Years
Warranty on Worcester Bosh Boilers
- ✓ GASSAFE, OFTEC, C.I.P.H.E, CHECKATRADE, TRADING
STANDARDS approved
- ✓ Replacement Boilers, Hot Water Cylinders, Underfloor Heating, Servicing,
Repairs, General Plumbing, Bathrooms etc. FREE QUOTATIONS

For a Professional Reliable Service

**Tel: 01359 259886 Mobile: 07771 557937
willowserve_ltd@hotmail.com**



WALSHAM –LE-WILLOWS CEVC PRIMARY SCHOOL

We have had a very busy start back to the new school year with clubs and swimming starting and Year 6 have been out on a trip – all within the first full week! We are looking forward to celebrating Jeans for Genes Day and our Harvest celebrations.

Caterpillars are starting the new year off with a topic based on themselves and their families exploring who they live with and who is important to them. They are exploring different kinds of materials in science and creating artwork by painting pictures of themselves.

Ladybirds are becoming Street Detectives and are drawing maps of the local area and comparing towns and villages. They are looking at place value in maths and writing sentences about Paddington Bear in English.

Dragonfly Class are looking at the lives of Stone Age and Bronze Age people and will be writing newspaper reports and non-chronological reports. In maths, they will be practising how to add, subtract, multiply and divide.

Grasshoppers will be exploring the lives of Queen Elizabeth 1 and Anne Boleyn; they have also been sketching images of Henry VIII which are most impressive. In DT they will be designing some quills.

Crickets are discovering what life was like during World War Two and will be writing diaries and newspaper articles to enhance their learning. Five children from the class have been chosen by the other children in the school to be house captains and we look forward to them stepping into this role of responsibility.

Our theme for this half term in collective worship is 'Friendship' – we have been looking at ways we can be a good friend and what this means for others as well as ourselves.

If you wish to make an appointment to visit or would like more information about our school, please contact Mrs McGarr, on 01359 259319 or by e-mail admin@walsham-le-willows.suffolk.sch.uk We would love to hear from you!

Maxine McGarr



IN REMEMBRANCE OF MAGGIE

Such an unfathomably deep well of understanding, of kindness, of assurance, of support and sharing has been revealed to us in these short weeks of Maggie's sudden and fatal illness.

We have been, and continue to feel most fortunate to live within such a community and are deeply appreciative of your letters, messages, cards, flowers and many individual acts of kindness.

Bless you all

Rob Barber



Professional Chimney Sweeping

Chimney Matters

Town and Country

Mobile : 07767 864127

Phone: 01284 789663

www.chimneymatters.co.uk

email: chimneymatters@hotmail.com

- Open fires, Wood burners swept and serviced for maximum efficiency.
- Certificates issued.
- Cowls and Bird guards fitted.
- Fully insured.



botesdaledental
PRACTICE & IMPLANT CLINIC

Your local,
family run

**Dental
Practice**



Find us on
www.botesdaledental.co.uk



Tel: 01379897176

Email: reception@botesdaledental.co.uk
Botesdale Dental Practice, Holly Close,
The Drift, Botesdale, Suffolk IP22 1DH



Shine n Clean



Residential and commercial window cleaning.
A reliable window cleaning service using the latest
pure water and reach & wash cleaning system,
leaving glass sparkling clean for weeks.
No mess, no smears and no harmful chemicals

01359 259376

email: shinenclean@mail.com



STANTON AND DISTRICT BRANCH ROYAL BRITISH LEGION



A meeting will be held by "C" group in the Cock Inn Stanton on Thursday October 5th at 8pm. Members will be given an update on the planning of the Festival of Remembrance and Drumhead service to be held at the Apex on Friday 10th November. Due to the rising costs in staging this event tickets purchased from RBL will cost £13.50, if purchased from The Apex an extra £2 will be charged as a booking fee.

Members enjoyed a curry evening held at the Cock Inn 19th September; a raffle was held to raise funds for the branch.

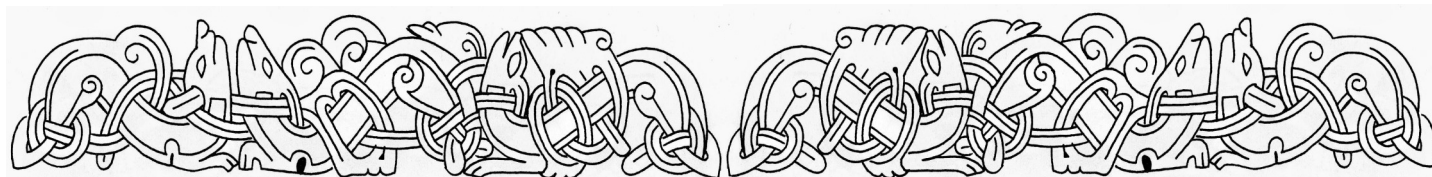
This year's Poppy Appeal will commence Saturday 28th October, we are very grateful to the volunteers who organise this and the collectors for their valuable time. Please support this very important cause.

The branch will parade at the Stanton Memorial on Remembrance Sunday, and the branch standard will be paraded at Walsham Memorial Saturday 11th November there will also be a service at Walsham Sunday morning the 12th, times of these services will be in the November Observer.

Branch funds at time of going to press was £1656- 51p

Our next meeting which will be our AGM, will be held Tuesday 14th November at the Cock Inn Stanton at 8pm

Hubby Frost



COMMUNITY LUNCH



The Children are back at school after the Summer holidays and the weather has been wonderful for some of us and too hot for others.

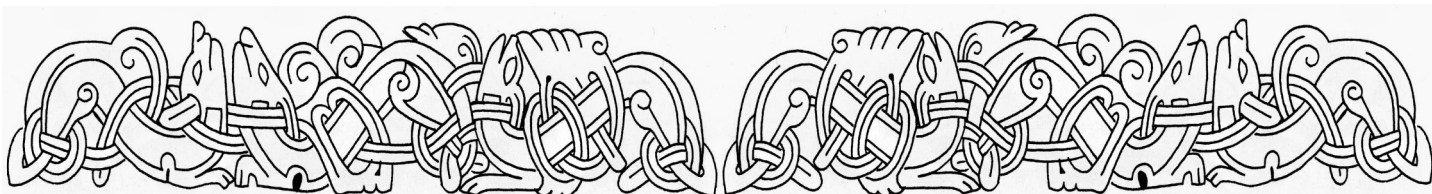
The Memorial Village Hall will be open from 12.30pm on Monday 9th October 2023.

Lunch will be Mild chicken korma curry, rice and traditional sides served at 1pm, followed by Lemon syllabub. Tea and coffee to follow.

We look forward to seeing you there.

Please book a place at £7.50p, with Shirley on 01359 258532 by 5pm on Thursday 5th October 2023.

Shirley White



CLARKES

OF WALSHAM LIMITED

✓ TIMBER & BUILDING SUPPLIES ✓ GARDEN & FENCING ✓ COUNTRY STORES



SERVING TRADE AND PUBLIC SINCE 1908



www.clarkesofwalsham.co.uk | 01359 259 259

The Street, Walsham-le-Willows, Bury St Edmunds, Suffolk, IP31 3BA

Upstairs Downstairs

A PREMIER CLEANING SERVICE

.... Bringing a sparkle into your home

Regular Housework
Trained Personnel
Safe, Secure and Fully Insured
No hidden administration charges

**Tel: Gigi Wadham-Smith
on 07580314010
or email: gigi@upstairsdownstairs.biz**

Timber Lodge Rookery Lane Walsham-le-Willows Suffolk IP31 3FB

Visit us at: www.upstairsdownstairs.biz



WALSHAM LE WILLOWS AND DISTRICT WI REPORT



Patrick Barker ...a local farmer.

Patrick's obvious enthusiasm for the development of a way to farm commercially whilst respecting the land and preserving it for future productivity, had us all spell bound. His talk was filled with a myriad of facts and figures from his encyclopaedic knowledge of everything, from moths to beetles and birds. (We marvelled at a survey revealing a count of seventeen hover flies to only four bees!) We learned that Lodge Farm is a member of LEAF (linking environment and farming) and also NFFN (nature friendly farming network) Patrick and cousin Brian, one a farmer/conservationist and the other a conservationist/farmer have together established green corridors and wild flower margins for wild life movement, (enjoyed by grey partridge). They have restored many ponds (helping crested newts) and reduced machinery and installed energy saving solar power. All while running a commercially successful farm where some of the grain may well have ended up in your breakfast cereal, thanks to Shredded Wheat and other well-known brands.

Our photo competition was won by a picture of a ferocious looking stag beetle!

The October WI meeting, on Wednesday 11th October will be an open meeting. All are welcome to attend. We encourage anyone to come along and hear our most interesting speaker who this month is Lucy Lewis, ex Bomb Disposal Officer.

In 1989 Lucy was the first woman to operate as a bomb disposal officer. She served two years with the Women's Royal Army Corps and then 8 years with the Royal Military Police before leaving to start a family. In 2018 Lucy became the first female Marshal at the University of Cambridge where she leads one of the world's oldest Constabularies, assisting with ceremonies and protecting freedom of speech. Her memoirs 'Lighting the Fuse' were published in July 2021 with extracts in the national press.

Please note there will be a charge of £5 for visitors which will include refreshments.

Jill Newell

WALSHAM OBSERVER SU-DOKU

				4	8	9	7	
9	8	5	2					
7			6					1
6							5	
			7		6			
	1							3
4					5			7
					7	5	3	8
	3	7	8	9				

For the uninitiated, the rules of Sudoku are very simple.

Each row, column and large square must contain the numbers 1 to 9 inclusive.

It's as simple as that, but you must apply logic to find which number goes where.

So, beginner or expert, happy hunting!

TIME FOR YOU™

DOMESTIC CLEANING

Are you tired of cleaning?



We have the
right cleaner
waiting
to help
you.

Regular - Weekly - Cleaner

01359 258991

Typically £15 per hour

www.timeforyousuffolk.co.uk



CHIMNEY SWEEP



ECO SWEEP
CHIMNEY SERVICES



- POWER SWEEP METHOD USED FOR A MORE THOROUGH CLEAN THAN A BRUSH
- FULLY INSURED
- INSURANCE RECOGNISED CERTIFICATES ISSUED ON EVERY SWEEP
- GOLD MASTER MEMBER OF GUILD OF MASTER CHIMNEY SWEEPS
- ALL CHIMNEYS, WOOD/MULTI FUEL BURNERS, AGA, BOILER FLUES SWEPT
- BIRD GUARDS FITTED

TEL: (01359) 232335

EMAIL: ecosweep@live.com

FLP Motors

*Your One Stop
Friendly Garage*

- * MOT's (Class 4 & 7 Up to 3500kg)
- * MOT Repairs
- * Diagnostics
- * Servicing (Inc under 3 years old)
- * Cambelts
- * Brakes, Tyres & Exhausts
- * 4 Wheel Laser Alignment (tracking)
- * Clutches
- * Air Conditioning Servicing
- * All Repairs Carried Out

**Free Collection and return
or courtesy car available**

Call Vic: 01359 250671

Flpmotors.com

MOT's £40 with this advert (Class4)

**Unit 23a, Shepherds Grove Ind Est
Stanton IP31 2AR**

Natural Balance Reflexology and Massage

Experienced reflexologist with
advanced training in:

- Pregnancy
- Menopause
- Anxiety and Mild Depression
- Reflexology Lymph Drainage
- Hot Stone Reflexology

I also practise Full Body, Hot Stone,
Indian Head and Baby Massage.



Please contact Zoie
07968 903567

zoie.tuley@icloud.com

I need a new car for work but I can't afford to buy a new one so I've been looking at second-hand options. I've heard so many horror stories about people buying cars that turn out to be faulty. I'm worried that I won't know what to check, especially as I know very little about cars. How can I make sure I don't buy a dud car?

For many people, buying a car is a major purchase and whether it's new or second-hand, the process can seem daunting and complicated.

First of all, where are you going to buy the car? If you're buying from a trader, choose a trustworthy one with an established name with a good reputation. Ideally, they will be part of a trade association or follow the industry's code of practice.

If you're buying via an auction, this is much riskier as you'll have fewer legal protections like the right to returns or refunds so carefully read the terms and conditions before you bid.

If you buy from a private seller, there's a few extra steps to take. For instance, try to inspect the car at their home address so if something goes wrong later, you have a record of that.

Make sure the car's details are correct by using the DVLA's free online vehicle information checker. You'll need the registration number, MOT test number, mileage and make/model of the car to do this check. Also, check the car's MOT history for free on gov.uk/get-vehicle-information-from-dvla.

Keep a copy of both these results (take a screenshot or download the information) as well as the original advert or description of the car. You might also consider getting a private history check to see if the car's been reported stolen, still has money owing on it, or has been in a serious crash. This will cost about £20.

Inspecting the car is crucial before buying. Ideally, do this during the day when it's not raining (scratches are harder to see on a wet car) and take it for a test drive for at least 15 minutes and on different types of road, if possible. Check you have the appropriate insurance for a test drive (either your own or the seller's policy might cover you).

Don't be afraid to haggle on the price, and only pay what you can afford. Make sure you get the original (not a photocopy) of the log book and valid MOT test certificate. Never buy a car without the log book.

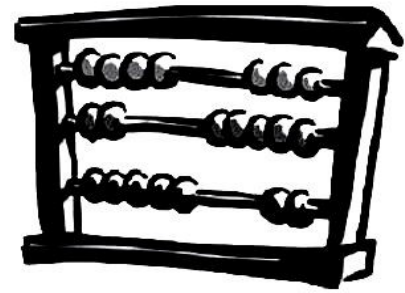
Often, despite doing all these checks, you might find something wrong with the car after you've bought it. You may have a legal right to a repair, the cost of a repair or some money back but it's on a case-by-case basis. If something has gone wrong with your car and you need help, you can call the Citizens Advice consumer helpline on 0808 2231133.

Citizens Advice Mid Suffolk can provide advice on this issue and much more, including debt, finances, employment, benefits and family/relationships. You can contact them by phone on 01449 676060, visit in person at Milton House, 5 Milton Road South, Stowmarket IP14 1EZ or use the contact form at midsuffolkcab.org.uk/contact-us. Our opening hours are Monday-Thursday 9.30am – 3.30pm and Friday 9.30am – 12.30pm.



TWINN ACCOUNTANTS LTD

We offer an **efficient and professional accountancy** service at a very competitive rate.



- ✓ Annual accounts and tax returns for Sole Traders, Partnerships and Limited Companies
- ✓ Preparation and assistance with VAT returns
- ✓ Payroll Services
- ✓ Construction Industry returns
- ✓ Management Accounts
- ✓ Tax Planning
- ✓ Company Secretarial Services

Tel: 01284 787616

Fax: 01284 787183

Email: info@twinnaccountants.co.uk

www.twinnaccountants.com

Suite 4, East Barton Barns,
Great Barton, IP31 2QY.

All accountants are not the same...we promise!

Langham Clinic®

Holistic Beauty & Complementary Therapies

Specialised treatments performed by highly trained & experienced therapists

Sports Massage - Pilates - Manicure & Pedicure
Electrolysis - Red Vein Treatment - Skin Tag Removal
Acupuncture - Oncology Massage - LaStone Therapy
Nutritional Medicine - Aromatherapy - Reflexology
Waxing - Mindfulness - Hypnotherapy - CBT

Dr. Hauschka Treatments (Holistic face & body treatments)

Everything possible at Langham Clinic is organic, sustainable & carbon neutral

www.langhamclinic.co.uk

Langham Grange, Stock Hill, Langham, IP31 3EE

Tel: 01359 258 700

The Dementia Friends sessions are run by volunteer ambassadors and staff with Dementia Connect, run by the Suffolk branch of the Alzheimer's Society. These sessions are a free method of promoting dementia awareness. They are asking you interested people and/or community groups consider either hosting a session, finding out more about Dementia Connect as a service, or in attending a session already planned.

Why is it important?

In rural and urban communities the population continues to age, meaning many more people are living longer and in their homes within their communities. Awareness building and opportunities within communities to support residents to benefit from increased levels of health, wellbeing, and access to the right services are vital.

Dementia Connect

The 'Dementia Friends' initiative invites people of any age to attend a single awareness session, where they will learn about dementia and more understanding of how living with dementia can affect a person. Attendees will gain 'Dementia Friends' status, by committing to helping people in their community in taking positive actions. For example, a Dementia Friend promises to be patient and kind when interacting with an individual with dementia. Hosting 'Dementia Friends' awareness sessions, will help to improve accessibility and care provision for those living with dementia, helping residents to feel supported in their community. Dementia Connect provides a free personalised dementia support service through in-person contact, telephone calls and online support and can be contacted via email or telephone:

0333 150 3456 | dementiaconnect@alzheimers.org.uk

If you or anyone you know may be interested in hosting or attending a free Dementia Friends session, or you would like to find out more please contact Dementia Connect directly.

"I became a Dementia Friend because in the community I'm from, not many people are aware of dementia. It helps people with dementia because they might feel more comfortable knowing that I'm more aware of dementia and help them if they need it."



SEARCHING FOR WORDS

T	U	D
R	N	E
E	A	T

Starting with any letter and moving horizontally, vertically or diagonally, see how many words of three letters or more you can find, using each letter only once in each word.

There should be one nine letter word which might in its raw state.

Get 60 words and you are doing well.



FITNESS



CONTACT US

- lsfitness35@gmail.com
- Lewis - 07740 185204
- Sam - 07860 102306

A functional fitness inspired gym based in Allwood Green. We promote a healthy, active lifestyle through dedicated Functional Fitness, CrossFit and Personal Training for all ages and abilities within our custom built, well equipped training facility.

Units 20/21, Rickingham Business Centre,
IP22 1LQ

LS-FITNESS.COM

SERVICES

- Group Fitness Classes
- Kids Classes
- 1-2-1 Personal Training
- Sports Performance Sessions



Ordering your heating oil through **CERTAS ENERGY** can help **YOUR SPORTS CLUB**



They will make a contribution to the Sports Club of
£10 per 1000 litres or £5 per 500 litres

Call 01603 885100 (sales team)
or 01603 885236 (service team)

Every order so far placed, has been competitively priced against other
suppliers - why wouldn't you help yourself and us

“All contributions gratefully received”
says Ian Campbell (Treasurer)



WALSHAM WILD WOOD EMBRACES AUTUMN



Bat Safari Update

Twelve of us met at the Walsham Wild Wood just before dusk on Saturday 9th to set out on our bat safari. It was really good to see two younger wildlife enthusiasts from the primary school involved and interested. Nick, from the Suffolk Bat Group, who gave us a brief introduction to bats and demonstrated the handheld echo detectors and the laptop. Each bat species has its own sonar pattern. This is mapped on the laptop screen and from the different patterns you know which bats are close by.

We walked along the hedges around the Wood and then along the hedged path behind The Acorns, Fishponds Lane. We started seeing bats and matching up the sonar patterns. We actually recorded five species of bats which was a great result and an improvement on last year's safari. Nick stated that this was a really good result. The bats found were:

**Common pipistrelle Soprano pipistrelle Brown (long eared)
Noctule Barbastelle**

Nick emphasised the need for good hedging and tree canopies around housing developments to help bats which was directed by Mid Suffolk District Council in the planning process for the Acorns. Bats, a protected species, have suffered a serious decline due to habitat loss as have many other countryside wildlife. The locations of the different bat "sightings" on our local safari reinforces the need for re-establishing wildlife corridors in the form of wide, mixed hedging.

The children and young at heart had a dark and interesting evening!

Pumpkin Trail

Our next event will be our annual pumpkin trail on Saturday October 28th which is an exciting opportunity for children to explore the woods in the dimpley dark and for all our supporters to get together for an autumnal gathering.

As ever, we invite you to bring along your carved pumpkins to line the paths and tea lights will be available on the night. There will be a food truck on site selling pizzas and there will be a range of drinks available. This year we will have stories and songs around the campfire.

So come along and join us! Donations are welcome on the night to fund the development of the Wild Wood project in furthering its aims of creating green space for nature, wildlife and the local community.

Further details from:-

Lorna Mackinnon: mackinnonlorna@gmail.com

John Stebbing: john@architectatwork.co.uk





RECRUITMENT OPPORTUNITY

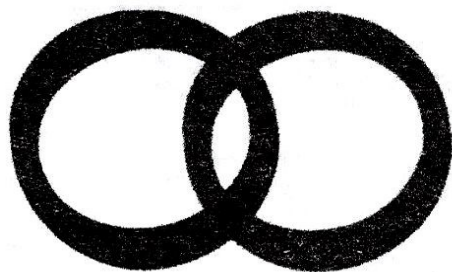
Are you looking to become a qualified Electrician and just starting out as an Apprentice or looking for an Employer to commence your Apprenticeship Training?

We are currently looking to recruit an Electrical Apprentice to join our team. The Company offers its clients Electrical, Air Conditioning, Heat Pumps, EV Charging Points and Solar Panels with Battery Storage. Most of the work is located in Suffolk, Norfolk & Cambridge, however, there may be occasional work in London and Nationally.

To be successful in the position we are looking for someone who wants to learn, who will put all their efforts into both their college work and work on-site, listen to instruction and take on board criticism. A positive attitude, being part of a team and taking on board any health and safety aspects is also a criteria.

To discuss this position please send an email with your CV to contact@lectec Ltd.com

TEL: 07377 153 954



ROBINS ROW

Insurance Brokers Since 1867

AN INDIVIDUAL SERVICE FOR ALL YOUR COMMERCIAL AND PERSONAL INSURANCE

**SPECIALISING IN HIGH VALUE HOMES,
COUNTRY HOUSES, LISTED AND THATCHED PROPERTIES
AND ALL COMMERCIAL INSURANCE SOLUTIONS**

TEL: (01787) 378205

EMAIL: ADMIN@ROBINSROW.COM

HALL STREET, LONG MELFORD, SUDBURY CO10 9JB

AUTHORISED AND REGULATED BY THE FINANCIAL CONDUCT AUTHORITY

OPEN GARDENS CATERING

A Thank You

I would like to say a huge thank you to all those who helped or contributed in any way to the catering in the Memorial Hall and the Priory Room for the Open Gardens 41th celebration. It was a great success, thanks to all of you.

A great many volunteers worked extremely hard in the Memorial Hall, and the Priory Room preparing food, serving lunches and teas, clearing tables, taking money and washing up (and what a lot of washing up there was!).

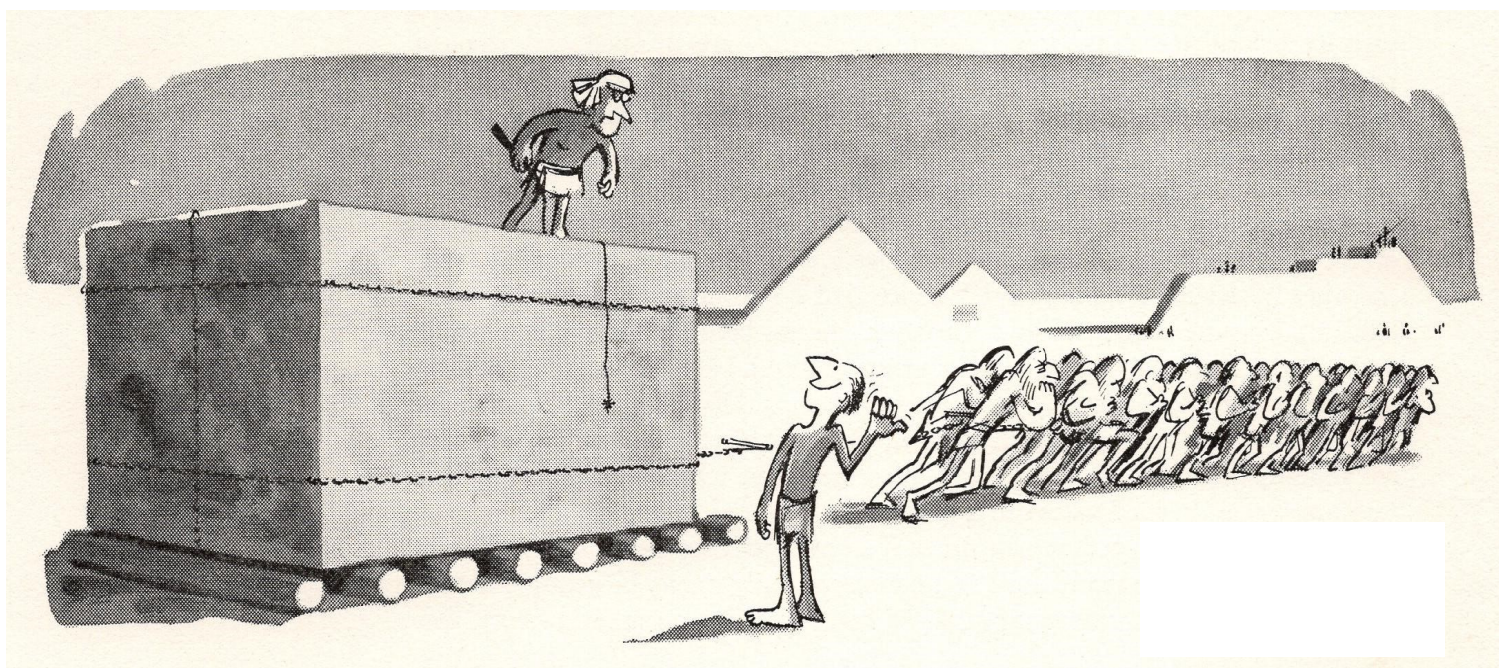
I would like to thank Judith Harlow and Sara Gray who organised and ran the Priory Room so efficiently and Tracey Gorzelak for all her hard work in the MVH. It was particularly heartening to have some newcomers to the village volunteering along with our regular stalwart helpers. It did not go unnoticed that many stayed for longer than their allocated rota slots, doing two and three additional stints of helping, for which we are truly grateful. We had so many positive comments on the quality of the food and the whole event, also it didn't go unnoticed by our visitors how hard people were working. I would also like to thank those who arranged the flowers for the MVH and the muscle men who so efficiently set the event up and speedily dismantled it.

Our thanks also go to Paul Hubbard of Rolfe's, Home Farm Catering and the MVH Committee for their support of the event.

As usual we had a mouth- watering array of delicious, home baked cakes sent in, so a huge thank you to all our wonderful bakers, many of whom went home and baked again on Sunday evening when the call went out, as our supplies for Monday had already been consumed by our visitors. We were eaten out of house and home and had no cake at all left over at the end of the event. Amazing! Our heartfelt thanks go to all who gave their time and effort so generously and cheerfully to make this event such a success. I wish I could thank you all personally but that would probably take me until the next Open Gardens event. Thank you all.

Frances Jenner

On behalf of Walsham le Willows Open Gardens Trust





The Epiphany Singers

Saturday 5th January 2024

I am pleased to be able to confirm that the Epiphany Singers will be coming to us again, and will perform a traditional carol concert on Saturday 5th January.

This is always a wonderful event, so please put the date in your diary. I may be looking for additional hosts this year. This will involve giving Bed and Breakfast to a singer or singers for the two nights of Friday 4th and Saturday 5th January 2024.

Please contact me if you would like to help.

Fiona Glover - 01359 258223 or email figlover@btinternet.com.

The Priory Room

The Priory Room in Walsham
is available to hire for private functions.

For bookings or further information, please contact:

John Boulter 07908 010555 johnboulter@yahoo.com

IS YOUR COMPUTER GIVING YOU HEADACHES?

PC & Laptop Repair
Virus Removal
Diagnose Start up Problems
Replace Hard Drives
Replace Power Supplies (PC Only)
New Laptop Screens
New PC / Laptop setups

Honest - Reliable - Affordable

Contact: Jim

01359 251946

07729 868669

email

info@completesolutions-it.co.uk

www.completesolutions-it.co.uk



COMMON GROUND THEATRE COMPANY

**Their Autumn Tour is Perfect for
Those Spooky October Evenings**



For over 10 years now, Suffolk-based Common Ground Theatre Company, run by Pat Whymark & Julian Harries, have been entertaining audiences all over East Anglia and in London. They have built up a loyal following with, as one reviewer put it, "the consistent quality of their work...[and]...the variety of their productions, each one quite distinct in form and style from the last".

Their autumn shows tend to be either adaptations of classic stories, or original dramas and comedies. Live music, performed by the cast is always a big element.

This year's autumn tour is **The Hellgate Club**, a gothic murder mystery set in "Belle Epoque" Paris, with live music in the cabaret style of the period.

A series of strange happenings have the authorities baffled. Several men have disappeared under mysterious circumstances, with no connection between them other than that they were last seen in the vicinity of the notorious Pigalle district. With no leads, the police ask retired detective, Jean Tellier (played by Julian Harries) to take one last case. Sensing danger around every street corner, in every dimly lit café, in every dark doorway, Tellier begins by interviewing the proprietors and staff of the local bars and nightclubs, including the notorious **Hellgate Club**.

They'll be performing at the Walsham le Willows Memorial Hall, on Thursday 21st October, 7.30pm.

For details of their autumn tour and Xmas show, and to book tickets, go to www.commongroundtc.co.uk



MORE OR LESS

∨

∨

>

∨

< >

∧

∧

< > >

<

**The numbers 1 to 5 should appear in
each row and column.**

**The greater and less signs indicate the
relative size of adjacent numbers.**



We provide independent financial advice in the following areas:

- **Savings and Investments**
- **Retirement Planning**
- **Long Term Care Plans**
- **Estate Planning and Family Wealth Preservation**
- **Mortgages**
- **Equity Release**
- **Financial Protection**

10 Forbes Business Centre, Kempson Way, Bury St Edmunds, IP32 7AR

admin@metritawm.co.uk

01284 700619

Tax planning is not regulated by the FCA

Metritá Wealth Management is a trading name of Metritá Wealth Management Ltd which is an appointed representative of 2plan wealth management Ltd. It is authorised and regulated by the Financial Conduct Authority under no: 838586. Registered address: 10, Forbes Business Centre, Kempson Way, Bury St Edmunds, IP32 7AR. Registered in England and Wales under no. 11832336.

POLLARD & CO



Builders of Integrity

TREVOR POLLARD

Millfield
Wattisfield Road
Walsham Le Willows
Bury St Edmunds
Suffolk
IP31 3BD

Tel & Fax : 01359 258339

Mobile : 07768 124715

- New Houses • Extensions • Renovations
- Barn Conversions • Refurbishments

Email: enquiries@pollardandco.co.uk

THE OPEN GARDENS WEEKEND 2023

The weather had been kind to us this year, the gardens were looking green and verdant for a change and apart from a late downpour on the Sunday afternoon the weekend was warm, pleasant and ideal for all to enjoy the event.

Our Church bells pealed as the visitors arrived in their hundreds, not only the stalwart regulars but plenty of newcomers, all eager to sample this year's delights and they certainly weren't disappointed. We had 35 open gardens and spaces for nearly 2000 visitors to wander through and be inspired by.

In St Mary's, a brilliant Art Exhibition and sale, a Floral Display on the theme of 'a celebration of God's creations', an exhibition by the History group, music from Angel Delight, Ivan Alderton and our own Mary Kidd and in the closed Church Yard birds of prey for the visitors to be amazed by.

The Village Market moved this year and was housed in the yard at Clarkes where visitors happily browsed the stalls. The brass bands played as the bowling club had their traditional competitions both adding to the quintessentially English scene.

Many visitors remark on the quality and variety of the refreshments that are provided, indeed some visitors only come to sample them; the Memorial Hall and Priory Room with the now famous lunches and teas. Pimms and produce at the allotments. The Pizza, BBQ and Bar Crew at the Elms delighted the public serving fine locally sourced food cooked to perfection and with the garden still packed at the end of each day the live music continued well into the evening.

Our well drilled teams at all our food venues throughout the village were continuously congratulated on their efficient performance. We had the rare tortoises again, loads of vintage cars and much much more...

None of this would be possible without the support, the help and the encouragement we get from, literally hundreds of Walsham residents, who throw themselves into the event.

Exhausting at times but we hope you all enjoyed the event and we need to thank you all; the garden owners of course, the volunteers at the car park, the flower arrangers, the art sales folk, the raffle ticket sellers, the many helpers at the refreshment venues, the cake makers, the bell ringers, the musicians, the tent erectors (and dismantlers), all our sponsors who advertised in the lovely programme and many many more.

Your warm welcome and generosity shone through our visitors were impressed that we had kept our entrance charge and other prices at the same level as last year whilst, of course, our own costs had risen dramatically but we still think the weekend was a massive success.

We are still paying bills and sorting out the accounts but at this stage we think in excess of £18K has been raised for the village. As always 50% will go to the fabric fund of the Church and the rest will be used to support the many Walsham clubs and organisations who will be invited to submit bids in due course. We will of course publish a summary of the final accounts here in the Observer once all is collected and accounted for.

Finally, once again please take a well-deserved collective 'pat on the back' and **THANK YOU** to you all so much for all your support. I do hope whatever the activity in which you were involved you got completely immersed and enjoyed the whole experience and came away with a 'well charged community spirit' plus that warm feeling of being part of the fellowship that is Walsham le Willows in the beautiful County of Suffolk.

*Collen Baker (collen@cool-tech.co.uk 0783156045)
Chair of the Walsham Le Willows Open Gardens Trust*

GROUNDWORK & PLANT HIRE

- Mini Digger & Driver for Hire
- Block Paving & Patios
- Extension Bases
- Driveways & Pathways
- Drainage Work
- Footings & Oversites
- Gardens & Site Clearance

C.S. CONTRACTORS

01284 724048 / 07720843577

108 Horringer Road Bury St Edmunds
IP33 2DP

www.cs-contractors.co.uk



Elite Fencing and Landscaping

JUST 10 MINUTES AWAY FROM YOU.
FENCING, GATES, DECKING, PATIOS,
PERGOLAS, PATHS, BASES,
TURFING, DEMOLITION,
REGRAVELING DRIVEWAYS,
GARDEN CLEARANCE,
GARDEN PROJECTS & RESTORATION,
REPAIRS, ODD JOBS & MORE!

ALL TYPES OF OUTDOOR WORK
UNDERTAKEN - SMALL OR LARGE
FOR FREE ESTIMATES CALL TREVOR
ON 01359 221128 OR 07761651567

EMAIL

TREVOR@ELITE-FENCING.CO.UK
WEB: WWW.ELITE-FENCING.CO.UK

N & S PEST CONTROL — SERVICES —

RATS! MICE! RABBITS! MOLES! BIRDS! WASPS!
FLIES! ANTS! SQUIRRELS! & MINK!

All effectively controlled by

Norfolk & Suffolk Pest Control
Chris Earth, 2 Orchard Lane,
Pakenham, Nr. Bury St. Edmunds,
Suffolk. IP31 2LQ

Phone: 01359 232538 Mobile: 07885 745446



JB LANDSCAPES

All forms of landscaping and garden
maintenance undertaken

- Patios & paving
- Grass cutting
- Fencing
- Garden edging
& retainers
- Decking
- Shed bases

For a free quote contact

07931089125

contact.jblandscapes@gmail.com

VOLUNTEERING

Its joys and limitations!

I write this piece in the aftermath of yet another hugely successful and enjoyable Open Gardens Weekend which draws in such valuable income for the church and voluntary groups in the village. The organisation required is huge and could not bear fruit without a wide spectrum of volunteers giving of their time both before and during the weekend itself, but it also rewards those who put the time in by engendering a sense of belonging to a community. I am sure I am not alone in getting a sense of worth in listening to the words of praise as visitors head back to their cars after experiencing this lovely place we live in.

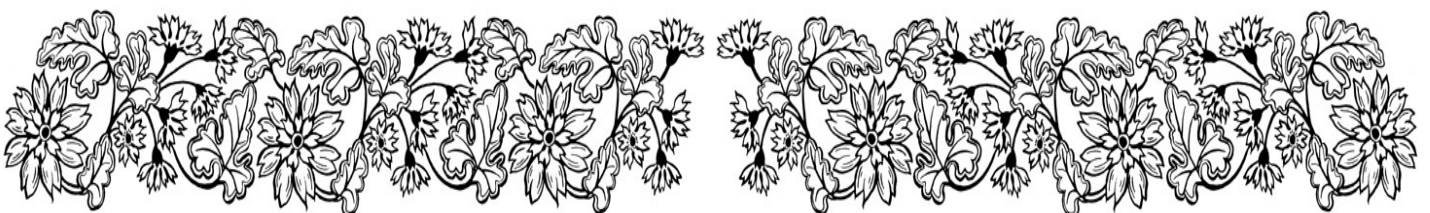
The Open Gardens Weekend is perhaps the best example of where the pleasure of giving, combines with that most necessary fundamental of raising money to oil the wheels of village life. Most of the groups who make the village social life tick are small and have limited capacity to raise their own funds so need some headline events to bring additional money in from outside the village. Some like the Church, Memorial Hall, Priory Room, and Sports Club have premises that can be used to stage events that will appeal to clients from the wider community but still need some support from the State and other grant funders.

Our own experience at the Sports Club is one in which we work hard to earn the money required to operate the facilities for sport and recreation on offer but have relied heavily on outside funders in the actual construction of them. Football Foundation have been particularly helpful, recognising our rural location could be restricting access to sport for many families; hopefully that can continue but we have reached a size, where operating the club solely on a volunteer basis is stretching management resources so that is a challenge for us.

Our latest venture, the Community Fitness Centre/Gym, has met a need judging by the 90+ members now using it, but it would not have come about other than via a public/private method of funding and operation. The management required to operate a gym on site had deterred us before, despite being confident of the viability, so when the opportunity became available for Neil Evans to co-own and manage the facility, we had the confidence to set about raising our share of the cost. Reaction to seeking access for grants has varied in view of the public/private model with approval secured from one strand of MSDC but another rejected on the basis of a grant going towards an individual taking a profit from the venture rather than all the income going to a charitable cause.

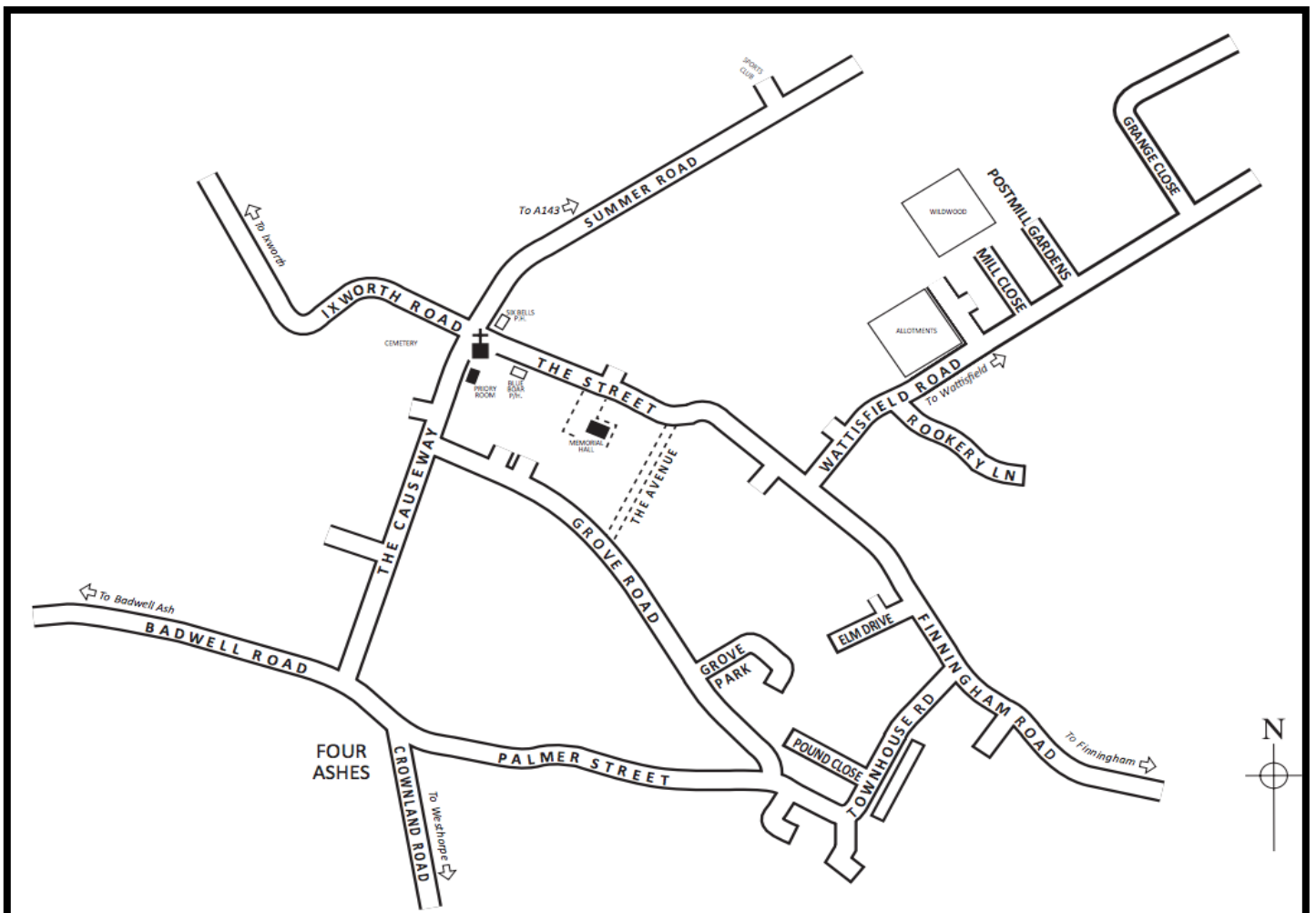
Nationally PPP (Public Private Partnerships) has received a mixed review as Governments sought to get the full cost of projects off their books but here in Walsham, it has enabled a project to start that hopefully enhances the value of living in our village whilst also generating a fresh strand of income for the Sports Club.

Ian Campbell



20's Plenty for Suffolk

Have your say...



IS 20 PLENTY FOR SUFFOLK?

The quantity and speed of traffic using our residential village streets and surrounding rural lanes is a key concern of local villagers. Moreover, the traffic impact of the proposed Shepherd's Grove developments including large scale warehousing and an end of life vehicle depot, the largest in the UK, will hugely exacerbate this problem for our community and those of neighbouring villages. The A143 is not suitable in many places for the levels of traffic anticipated and it is almost inevitable that this will also hugely impact traffic levels on local roads.

The village currently has an area outside the school on Wattisfield Road where 20mph is the advised speed limit and we are keen to know your views on traffic and in particular if there are other areas of the village that would benefit from lower speed limits or other traffic calming options.

There are quite a few reasons for promoting the 20 mph speed limit but these are the key ones:

- Encourages walking and cycling
- Fewer casualties and collisions
- Less air and noise pollution
- Lower costs

In our particular circumstances, we also think that if the routes through our village become slower for through traffic it could make them less attractive to excessive traffic volumes created by the proposed developments.

The centre- fold of this month's Observer is a short survey designed to gather the opinions of those living, going to school or working in and around the village. Please take the time to have your say and return your response to any of our drop off points by October 13th. The drop off points include the Walsham Primary School, the Six Bells, the Memorial Hall, Walsham Sports Club and Rolfes. There will also be an electronic version on the village website for your convenience.

To find the electronic form, please search: <https://www.walsham-le-willows.org/news/>

To find our more, please visit the website: <https://www.20splenty.org>

1. How important an issue is traffic in and around Walsham le Willows?

Very important

☐

Quite important

☐

Neither important nor unimportant

☐

Not particularly important

☐

Not important

☐

2.. Are there any specific areas in and around the village where you have traffic safety concerns?

3. Would you be in favour of a 20mph speed limit? Tick one option.

Throughout the current 30mph zone.

☐

In certain areas of the village such as by the play park.

☐

No further areas apart from outside the school as now.

☐

4.If you answered some areas, please tell us which areas should have 20mph.

5. Please tell us how you regularly move around the village.

Tick any options that apply to you.

Bicycle

☐

Bus

☐

Car

☐

Walk

☐

Motorcycle

☐

6.Please tell us about any other measures to calm traffic you would like to see and why.

7.Please tick the options that apply to you.

I am a resident

☐

I work in the village

☐

I own a business in the village

☐

COMMON MISCONCEPTIONS

“...Drivers don’t obey 30 mph road restrictions and won’t obey 20mph”

Untrue

Studies have shown that average and faster road speeds do decrease over time as a new culture of awareness and compliance develops. This happens when drivers believe that other drivers are driving slower.

Portsmouth carried out one of the first case studies which monitored the effects of 20mph speed limits. The results showed that speeds were down by 6.3 mph overall and the average speed was 24 mph. Drivers will adapt, as they did when drink-driving became illegal.

" ...A 20mph upper speed limit is negative to the local economy."

Untrue

Businesses thrive where it is safe to cycle and walk. Fuel costs drop and tourists and visitors love 20mph.

“...Reducing the speed limit in W.L.W. won’t have any appreciable effect on traffic pollution and air quality.”

Untrue

Pollution reduces at slower speeds, particularly from diesel engines. There is less accelerating and braking which reduces brake and tyre particulates. The organisation NICE (National Institute of Health and Care Excellence) recommends 20mph without speed humps for better air quality, lower noise levels, vibration and road wear.

Implementation of 20mph builds on the established understanding that slower speeds are right for most built up roads.

The new Highway Code (Hierarchy of the Road Amendments), reinforces this message by prioritising pedestrians, cyclists and horse riders over cars, vans and buses.

<https://www.20splenty.org>



M A Heating Services



- * Oil, Gas and LPG boiler servicing, replacements and repairs
- * Repairs to central heating system faults i.e. pumps, programmers and cylinders
- * Servicing and repairs to Rayburn, Aga Stanley and Esse
- * Landlord's Certificates

Telephone: 01379 783427

Wickham Gate, High Street, Gislegham, Suffolk, IP23 8JD

The Old Tea Room Veterinary Surgery

For a professional caring service

Tel: 01359 241761

Station Road, Elmswell, Bury St Edmunds, IP30 9HA



A member of
Stowe Veterinary Group
www.stovevets.co.uk

WALSHAM HISTORY GROUP

Ronald Blythe's Akenfield

The Walsham History Group was treated to a showing of the film *Akenfield*, a subtle and compassionate look at the lives and changing attitudes and social expectations of 3 generations of men in rural Suffolk, from before WW1 to the late 1960's.

Centred around the lives of farm workers, pre-WW1 the work was hard, physical labour and the pay was paltry. Men were left physically exhausted and suffered the insecurity of not being paid if they didn't work, even if this was simply due to heavy rain and through no fault of their own. Their security came from their close-knit families and community. People stuck together and raised their own spirits, often by singing together. People took pride in their work, in doing their work well, in craftsmanship, in having a reputation within their community. But opportunities were few and far between before WW1. Men worked on the land; women worked in service. Finding other work was difficult. It tells the tale of a horseman, fearful of losing work as mechanisation was introduced walking 40 miles to Newmarket and 40 miles back, just to try and find work, but without success.

The advent of mechanisation brought job insecurity, new skills to learn that were difficult for the older generation. When WW2 erupted people became less interested in being the best and more interested in living for the moment, who knew how long they might survive or when they would see each other again.

For women, the physical work of life in service, trussed up in long dresses gave way to their independence during WW2 and to the era of mini skirts and the freedom to choose their own futures.

By the 1960's people were less interested with their work on the farms and there were less jobs to be had. The younger generation were enticed away to other parts of the world by the promise of a better life, seeking opportunities that they didn't have at home. The tight knit farming communities dissolved as did their way of life. This is the story of the Twentieth Century; it could have been anywhere.

It's interesting to note that all of the actors in this film were local Suffolk people. The Suffolk accents were real and have become rarer as the way of life has vanished.

Alison Martin



A decorative border consisting of a series of musical staves with notes, framing the central text.

MUSIC IN ST MARY'S CHURCH

Saturday 14th October at 7.30pm

THE ABBOT CONSORT OF VOICES

20 voices singing from Tudor times to the present day.

Free entry, refreshments and retiring collection for church funds

*Oil Fired Pressure Jet Boiler
Servicing & Plumbing*



**ANDY'S
OIL BOILER
SERVICES**

ANDY BACOS

 07775 751303

 andy.bacos@ntlworld.com

 Andy's Oil Boiler Services



WALSHAM *History Group*
presents



THE SUFFOLK BEVIN BOYS

*Barbara McElroy remembers her
father was conscripted down the
Derbyshire mines in WWII.*

Wednesday 18th Oct 2023 at 7.30pm

Priory Room, Walsham-le-Willows.

Members Free Visitors £5.00 Refreshments

DIARY OF EVENTS

OCTOBER

Wed 11th W.I. Bomb Disposal
 Priory Room 7.45pm
 Tur 12th The Hellgate Club
 Village Hall 7.30pm
 Wed 18th History Group
 Priory Room 7.30pm
 Sat 28th Pumpkin Trail & Story
 Wild Wood 5.00pm
 Halloween Disco
 Sports Club 7.00pm

NOVEMBER

Wed 8th W.I. Community Singing
 Priory Room 7.45pm
 Wed 15th History Group

Priory Room 7.30pm

Sun 19th Tree Planting
 Sun 26th Wild Wood 10.00am

DECEMBER

Sat 2nd Christmas Tree
 St Mary's 4.00pm
 Wed 13th W.I. Christmas Workshop
 Priory Room 7.45pm

JANUARY

Wed 10th WI Birthday Party
 Priory Room 7.45pm

FEBRUARY

Wed 14th W.I. First Aid Course
 Priory Room 7.45

MARCH

WALSHAM & DISTRICT W.I.

Lighting The Fuse

A talk by Lucy Lewis
 ex Bomb Disposal Officer
 More details on Page 9

Wednesday 11th October at 7.45pm

NEW MEMBERS ALWAYS WELCOME

THE MOBILE POST OFFICE

The Mobile Post Office will still be coming to the
 Village Hall Car Park on Thursday mornings

from 11:00am till Noon till further notice.

POST
OFFICE



WALSHAM SPORTSCLUB EVENTS FOR OCTOBER & NOVEMBER

Sunday Night Bingo

8th & 22nd October
5th & 19th November
7pm start in the Clubhouse

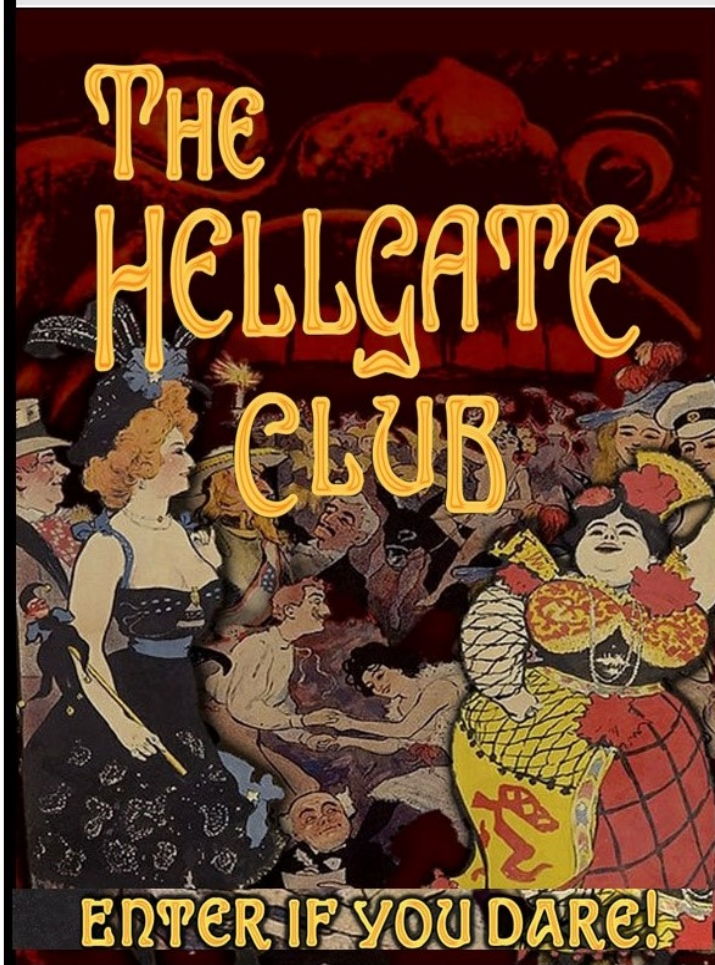
Halloween Disco

Saturday 28th October
7pm till Late

For further details see Page 41

**For further information phone
Julian 07597340273**

COMMON GROUND THEATRE COMPANY



Walsham-le-Willows
Memorial Village Hall
Thursday 12th October
at 7.30pm

Tickets £13 (U21s £10)
Available from
Box office 07807341364
or
from their website
www.commongroundtc.co.uk



WALSHAM LE WILLOWS PARISH COUNCIL MINUTES

of the meeting held on Wednesday 6th September 2023 commencing at 7.00 p.m. in the Memorial Hall.

[Pending formal approval, these minutes have been informally approved. Any further corrections will be proposed & minuted at the next meeting]

PRESENT: Cllrs. Bartholomew, Belson, Brookes, Tuck, Winch.

ALSO PRESENT:

1. OPENING - including Statement, if any

The Chair spoke to Council about the contributions Maggie Barber made, not only as a former Chair of the Parish Council, but in all aspects of village life over her 50 years in the village. Cllr Belson spoke of her commitment, enthusiasm and indomitable spirit for protecting, promoting and nurturing relationships in all that she did. The Chair then called for a minute's silence in remembrance of Maggie. The Clerk was asked to write to Rob Barber to offer the condolences of the Parish Council to Rob and his family.

2. APOLOGIES

Apologies were received and accepted from Cllrs Mecrow and Roberts.

3. DECLARATIONS of Pecuniary & Non-Pecuniary Interests

a) To receive declarations of pecuniary, local non-pecuniary interest(s) incl. personal interests in items on the agenda and to include declarations of any gifts of hospitality – none received.

b) To receive declarations of lobbying for planning matters on the agenda – none received.

a) To receive requests for dispensations – none required.

4. MINUTES - To Receive and consider the minutes of the following meetings (as previously circulated)

- Minutes of the meeting of 9th August 2023 were approved and signed as a true and accurate record.

- Review of actions assigned to councillors from last meeting – none.

5. REPORTS FOR INFORMATION & QUESTIONS - to receive written reports & put questions:

a) District Councillor Winch

- Cllr Belson queried the number of homeless applications for Mid-Suffolk. Cllr R Winch confirmed the number of 588 is the number declared for any reason and for any period of time over the past year and also that this is not

high by comparison with other districts. Also, that it does not include those registered as asylum seekers.

- Cllr Bartholomew wanted to minute a thank you to District Councillor Winch for signposting to the CIL funding for a local project. Cllr R Winch confirmed that applications should be submitted as it is predicted that there will be less CIL funding in the near future due the impact of the economy on house building.

b) County Councillor Fleming

- Cllr Bartholomew asked about SCC finances in the light of Birmingham City Council declaring itself unable to balance its budget and rumours of a 'hole' in the SCC budget for this year. Cllr Fleming clarified that there is indeed a deficit but that this will be managed by moving resources from one budget to another allowing the budget to be balanced for this year. SCC have previously dipped into reserves, but this is not a sustainable solution and it is predicted that more councils are going to have the same problems.
- Cllr Tuck asked about the RAAC issue in SCC schools. Cllr Fleming advised that so far 5 high schools have been identified as affected.
- Cllr Bartholomew asked about the weak bridge designation on the A1088 at Stowlangtoft causing the designated lorry route to be changed to route through Elmswell and Walsham le Willows for some years now. He asked about repairs as this as a SCC highways responsibility. He highlighted the impacts on surrounding villages, particularly in the light of development proposals for the Shepherd's Grove site which will produce a significant increase in traffic movements and potential damage to the bridge. Cllr Bartholomew wanted to know what was being done about the repairs. Cllr Fleming said that she would ask directly of the responsible cabinet member.

Cllr J Winch also asked if the weight limit on the Causeway bridge could also be specified at the same time. Cllr Fleming to ask about this too.

- Cllr Bartholomew asked about the recently replaced finger signage which not only has Walsham mis-spelled but also has already been hit and damaged by passing traffic. Cllr Fleming asked for the image we have of this to be forwarded to her which the Clerk did in the meeting. She will follow up.

6. PUBLIC FORUM - To receive questions and matters of concern from members of the public in attendance with regard to items on the agenda and Walsham le Willows in general – No members of the public present.

7. PLANNING MATTERS

- a) Matters relating to DC/22/2190/HYB (Jaynic) Proposal Hybrid planning Location Land At Shepherds Grove Bury Road Stanton Suffolk including Matters relating to DC/23/1154/OUT (Equation) Proposal to West Suffolk Planning Authority for Outline Planning Application (means of access to be considered) for demolition of existing buildings and structures to provide new

employment floorspace (Classes E(g)(iii), B2 and B8) including vehicular access with all other matters reserved Location Shepherds Grove Industrial Estate East Sumner Road Hepworth Suffolk Applicant , Shepherds Grove Investment LLP

- The receipt of email from Roger Spiller about the recently reported fire at a Copart site was noted. This had prompted further investigation which shows a history of large vehicle fires at Copart sites. Cllr Fleming was able to say that Gary Hancock was looking into it for SCC and the possibility of conditions requiring the removal of batteries before vehicles are brought to the site. Cllr Fleming thought that both these developments were unsustainable and does not understand how they passed the sustainability assessment. She is particularly concerned about how the demand for labour will affect existing businesses and services which are already struggling to fill vacancies.
- The report from planning consultant, Andrea Long, was reviewed and some minor amendments made before it was approved for circulation to SCC Highways, West Suffolk District Council Planning Department, other local parishes with copies to District and County Councillors.

b) APPLICATION FOR PLANNING PERMISSION - DC/23/03724 Proposal: Full Planning Application - Erection of commercial workshop. Location: Ashwell Construction Ltd, Summer Road, Walsham Le Willows, IP31 3AJ THE PARISH COUNCIL MADE NO COMMENT

c) APPLICATION FOR PLANNING PERMISSION WITHOUT COMPLIANCE OF CONDITION(S) - DC/23/04018 Proposal: Application under S73 for the Removal or Variation of a Condition following grant of DC/21/00694 dated 31/03/2021 Town and Country Planning Act 1990 (as amended)- Erection of single storey side extension and two storey rear extension (following demolition of outbuilding). To Vary Condition 2 (Approved Plans & Documents) as per details received. Location: 4 Grove Road, Walsham Le Willows, Bury St Edmunds, Suffolk IP31 3AF

d) Variation of conditions 4 Grove Road Walsham Le Willows Bury St Edmunds Suffolk IP31 3AF DC/23/04018 (in relation to grant of DC/21/00694 dated 31/03/2021) THE PARISH COUNCIL MADE NO COMMENT

8. PLANNING OUTCOMES (decided by Mid Suffolk District Council, Planning Authority) for noting only

a) APPLICATION FOR PLANNING PERMISSION - DC/23/02867 Proposal: Full Planning Application - Conversion of and extension to existing outbuilding to form residential annex. External alterations to existing garage to re-orientate the garage doors (resubmission of withdrawn application DC/22/05048). Location: The Beeches, Grove Road, Walsham Le Willows, Bury St Edmunds Suffolk IP31 3AD AND Related Listed Building consent DC/23/02868 MSDC GRANTED THESE APPLICATIONS

b) APPLICATION FOR PLANNING PERMISSION - DC/23/02819 Proposal: Planning Application. Replacement of old storage container for green

equipment. Retention of existing container. Location: Walsham Le Willows Memorial Village Hall, The Street, Walsham Le Willows, IP313AA MSDC GRANTED THESE APPLICATIONS

- c) APPLICATION FOR PLANNING PERMISSION - DC/23/03018 Proposal: Householder Application - Installation of wood burning stove. Location: 6 The Maltings, Wattisfield Road, Walsham Le Willows, Bury St Edmunds Suffolk IP31 3BD MSDC GRANTED THIS APPLICATION

- d) APPLICATION FOR LISTED BUILDING CONSENT - DC/23/03093 Proposal: Application for Listed Building Consent - Remedial works and alterations. As detailed within the schedule of works. Location: Old Hall, Finningham Road, Walsham Le Willows, Bury St Edmunds Suffolk IP31 3BN PERMISSION GRANTED BY MSDC

APPLICATION FOR LISTED BUILDING CONSENT - DC/23/03094 (and related LBC Proposal: Application for Listed Building Consent - Remedial works and alterations (2). As detailed within the schedule of works. Location: Old Hall, Finningham Road, Walsham Le Willows, Bury St Edmunds Suffolk IP31 3BN PERMISSION GRANTED BY MSDC

9. NEIGHBOURHOOD PLAN – to receive any comments from Parish Council representatives (Cllrs. Belson & Mecrow) and consider any matters arising

- a) The Clerk proposed that a draft for Neighbourhood Plan publicity is put together now in readiness for the notice of referendum from MSDC to be sure to meet the deadline for the October Observer. In the absence of a definite date, the Parish Council decided to draft a notice that would alert people to the upcoming referendum and asks them to watch out for the notice of a date. Cllr Belson to pass directly to the editor of the Observer and the Clerk for publication on other channels.

10. PLAY AREA – consider any matters arising.

Clerk advised that new recycling bins have arrived and requested volunteers from among councillors for installation. Cllr Belson will contact Cllr Roberts who has the bins and they will arrange for this to be done.

11. FINANCE & AUDIT

- a) Bank reconciliation for the period ending 31st August 2023 was approved and signed.
- b) Accounts awaiting payment summary and invoices for payment were approved and signed. (Appendix 1).
- c) Council consider and receive note on asset register review prior to insurance renewal in October and the insurance schedule cover until end September 2023. Note circulated 01/09/2023 (and updated). It was agreed that the Clerk should amend the cover to take account of changes of an overall increase in asset value, all risks and damage to property insured, and fidelity guarantee amounts and ‘sum insured for buildings’. Clerk proposed:
- that the bracket for fidelity guarantee is reduced if possible, in line with year-end figures for 2022/23 + 50% (95,000).
 - that the declared amount for property damage is adjusted in line with asset

register revaluation (to 178,871.34).

- that the 'buildings insured' amount remove if that is possible on this policy.
- Declarations made as follows: budgeted income (35,000); Wage roll (8,000); and Volunteers (13).

This proposal was unanimously agreed. Clerk to arrange with broker.

12. PARISH COUNCIL OBJECTIVES – 2023/24

Following on from discussions since the meeting was held Cllr J Winch proposed (by email):

- a) Cllr Winch proposed that it is agreed that there is to be a questionnaire on 20's plenty for Suffolk and that a small group is assigned to compose the questionnaire and circulate to all councillors for agreement for publication in the October Observer (deadline the end of September). The Clerk has advised 3 resident volunteers for this working group. Proposal unanimously approved.
- b) Cllr Winch proposed that the 20's Plenty questionnaire is also set up for electronic completion via website and facebook, and that this is publicised to the Parish Council's mailing list of interested parties. The Clerk proposed that the questionnaire is compiled on an electronic platform and any paper format derived from that (e.g. survey monkey). Proposal unanimously approved.

13. CLERK & COUNCILLOR REPORTS

- a) Updated action log was reviewed for any matters of concern/note. There were none.
- b) Proposal from Clerk for the purchase of a new strimmer for use in the closed churchyard based on quotes from SuffokAgri as circulated on 22/08/2023. Was unanimously approved. Clerk to arrange.
- c) Councillor training (x2 modules at £30 each) for Cllrs. Brookes and Tuck was unanimously approved. Cllr Tuck to advise dates.
- d) To consider and receive any other matters of concern/note for the next agenda.
 - Play Area - Cllr IB addressed the surfacing issues around the roundabout. Clerk confirmed that the managing director had confirmed that he would get back with possible dates for on-site meeting with Councillors. This will be delayed due to the workload for school returns.
 - Cllr JW suggested Pride of Place grant could be used for footpath mapping. It was also suggested that it could be used for purchase of the strimmer required for closed churchyard maintenance. Clerk to apply for the £250 grant before the October deadline.
 - Cllr AB – Enquiry about ownership of land and responsibility for upkeep. Cllr Belson agreed to look into this and report back.
 - Cllr IB gave some information about possible ownership of Fishponds Lane. Clerk to write to ask. UKPN are still intending to get back to us on the same issue.

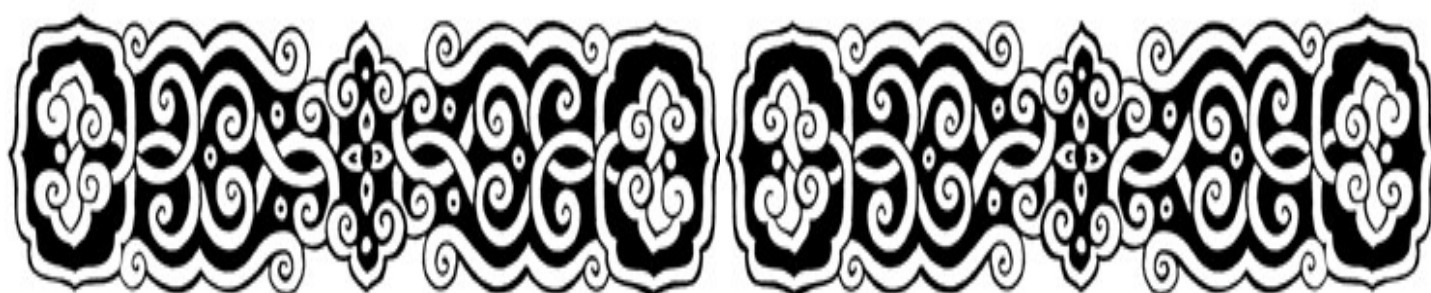
Meeting Closed at 20:45

Next Meeting – 11th October 2023 7pm - Memorial Hall.

APPENDIX 1

Payments for Authorisation SEPTEMBER 2023

#	Payments OUT	Amount	Description
1	M&TJ's	£354.00	Play area hedge cutting & churchyard grass cut
2	CGM	£132.00	Grass cutting play area and stream
3	GB Pollard	£46.38	2nd Cut Footpaths, grant disbursement
4	P Dryden	£48.00	2nd Cut Footpaths, grant disbursement
5	M Hawes	£74.70	2nd Cut Footpaths, grant disbursement
6	Martineau Farms LLP	£184.74	2nd Cut Footpaths, grant disbursement
7	H Reeve	£25.09	2nd Cut Footpaths, grant disbursement
8	H Reeve	£176.58	2nd Cut Footpaths, grant disbursement
9	Parish Council Employee	£518.14	Wages
10	HMRC Cumbernauld	£366.80	Employers PAYE
11	MultiSigns Ltd	£18.00	Delivery charge last order - 2 payments 15.00 & 3.00
12	MSDC	£156.99	Parish Election re-charges
13	Memorial Village Hall	£54.00	Memorial Hall Hire monthly meeting and extra meeting on 23/08 – 2 payments 25.00 & 29.00
14	Trevor Seeley (Elite Fencing)	£620.00	Play Area New gates
15	Glasdon	£947.10	2 new recycling bins for play area with signage (x4) & ground fixings
#	Payments IN & Other Payments/Transfers	Amount	Description
1	PlanningPortal.co.uk RECD	£58.50	Refund of planning application fee
2	Footpaths grant RECD	£555.49	Second cut
3	Neighbourhood Planning Grant RECD	£1790.00	For last stage of work on the plan
4	Precept DUE	£12,298.00	2 nd payment



WILDLIFE IN OCTOBER

Well, where has the summer gone, it doesn't seem long ago I was writing about spring, and the light warm evenings are disappearing once again! The nights may be pulling in, the flowers in our gardens may be fading but life will fill the garden once again particularly around the bird feeders. We have had a quiet spell with the birds after they have been busy raising their broods and with seed, fruits and berries growing the birds have gone elsewhere to eat. One bird that we will be seeing more of over the coming months is the Blackbird. We have our British Blackbirds and ones that come over to Britain to over winter here from Northern Europe. Blackbirds are territorial and will establish their boundaries during their first year, this is the territory they will hold throughout their lives. They will feed in this territory but will also go elsewhere for food. Territory boundaries however break down when the last brood of chicks fledge the nest and the adults begin to moult their tatty feathers. This moulting process takes a lot of energy and they will also hide away as they will be vulnerable to predators during this time. Once this is over and they look beautiful once again, territories will be re-established. To attract Blackbirds to your garden provide foods they enjoy eating such as, berries, mealworms, uncooked oats, flaked maize and suet balls. They also enjoy eating windfall apples, so leave a few on the ground for them and see who turns up. Leave seed heads from your garden plants, as well as feeding the birds they can look very architectural.

Check your ponds especially wildlife ponds and see who is still around. You may be surprised to see Tadpoles, but why are they still around? Most Tadpoles will have hatched in spring and metamorphosized into Froglets or Toadlets by summer leaving their watery nursery. There are a few factors that can slow the rate of development or stop it completely. One is that the pond temperature can be a cooler temperature, another can be a lack of algae in the pond, particularly a new pond, or too many tadpoles competing for food which will limit the growth rate. There is another reason that stops development completely, and this is down to a genetic abnormality. If a tadpole lacks the gene that produces the growth hormone which is called Thyroxine, they will be unable to metamorphosize into Froglets or Toadlets and will stay Tadpoles for the rest of their lives. So have a look and see who is still about.

We can see life in our gardens and in the water, but what about underground? There is the Wood Wide Web. This belongs to the Fungal Mycelia that is present in the soil and forms vast underground networks. Some of these underground networks enter a beneficial association with plants and trees. This is called Mycorrhizal associations, and if you are a gardener you will more than likely have heard of this. The fungal Hyphae wrap themselves around and sometimes into the roots of plants and trees and will share minerals, nutrients, water, carbon and nitrogen with each other. Some Fungi are known to supply 80% of phosphorus to the host plant. These underground networks can extend for many miles and trillions of miles are thought to exist around the world. Fungi cannot make their own food, so how do they feed? They attach themselves to a side of a log or a dead tree and release enzymes and acids to 'digest' substances for food. This is important to help clear up rotting dead material and recycle nutrients. All this goes on without being seen. The part of the Fungi we do see on the surface is the fruiting body, the flowers of the Fungal kingdom. Their purpose is to spread single celled spores which will develop new colonies.

Angie Bennington

TRADITIONALLY REARED FARM TURKEYS AVAILABLE FOR CHRISTMAS



Contact:-

John Farrow Priory Farm Rickingham Diss Norfolk
Telephone 01359-259221



**MCS ACREDITED WITH INSURANCE BACKED WARRANTY FOR YOUR
SOLAR PV & BATTERY STORAGE REQUIREMENTS**

NAPIT & FGAS REGISTERED ELECTRICIAN OFFERING THE FOLLOWING SERVICES:

- All Electrical including Certification
- EICR (Property Testing)
- Solar PV Panels
- Battery Storage
- Electric Heating
- Air Conditioning / Heat Pumps / Electric Heating



Professional & Reliable Service



Tel: 07377 153 954

Email: contact@lectec ltd.com

RESIDENTIAL - COMMERCIAL - INDUSTRIAL

GREEN DILEMMAS

new oil boiler ban from 2026

Oil and gas boilers release carbon dioxide and therefore contribute to climate change. The government is planning to ban the installation of new oil boilers from 2026. New gas boilers (the main heating source in the UK) are banned for new homes from 2025 and all properties by 2035.

The fact that the deadline for oil boilers is now so close could make life difficult for roughly 1.7 million people mainly in rural communities. A very high proportion of households in Mid Suffolk use oil as a single source of heating (30.3% compared with 13.2% in Suffolk and 3.2% in England), with over 60% of households in the Walsham-le-Willows ward using oil as their primary heating source. There has been very little discussion about the cost implications for these citizens if their boilers need replacing.

The first thing you need to do is to be clear about the likely lifetime of your oil boiler and check this out with whoever services your boiler. If you have a relatively new boiler you probably don't need to worry too much as the maintenance of oil boilers will still be allowed. You should probably start looking at insulation grants as anything you can do to improve your home's insulation will help with your options longer term.

If your boiler is quite old and may need replacing in the next few years then you have a problem.

The main option recommended by the government is to install an air source heat pump in place of your oil boiler. These run off electricity and the theory is that if we can generate our electricity from renewables we can then heat our homes without impacting the carbon dioxide in the atmosphere. You can get a grant of £5000 to £6000 towards the cost of an air source heat pump but the total cost of the installation can be significantly more.

The other problem is that air source heat pumps don't work well in a poorly insulated house and you will almost certainly need your radiators changing to ensure your house will be warm enough. Insulation is something we should all be doing anyway and there are insulation grants available but again it comes at a cost which can be substantial.

The other option is to replace your oil boiler in the next couple of years so you have a new boiler in place before the ban (a boiler should last 15 to 30 years). This will have the opposite impact to what was intended by the ban as we will end up having a wave of new installations instead of alternative options.

There is a possibility that oil boilers will be allowed to remain operational if they transition to more environmentally friendly fuels such as hydrotreated vegetable oil (HVO), which can serve as a replacement fuel with minor adjustments. However, whether this will be allowed isn't clear at the moment. Clearly this would be a cost-effective alternative.

There are other options like ground source heat pumps (you need garden space), biomass boilers (there is a dispute about carbon neutral this technology is) and electric storage heaters and radiators (very expensive to run and there are no government grants).

There is no need to panic and government rulings may change but if you have an oil boiler you definitely need to start thinking about what you are going to do.

Richard Winch

*Oil Fired Pressure Jet Boiler
Servicing & Plumbing*



**ANDY'S
OIL BOILER
SERVICES**

ANDY BACOS

 07775 751303

 andy.bacos@ntlworld.com

 Andy's Oil Boiler Services



J W Amps Ltd



**Offering service and repairs to all types and makes of
garden machinery, ATV's, compact tractors etc.**

Machinery bought and sold

**Over 15 years experience – factory trained by
Briggs & Stratton, Stihl, Westwood and Countax.**

Collection and delivery service available.



**Contact Simon
Mobile 07974 430366**



E-mail: simonamps@btinternet.com

THE WRAP PARTY

It's a time-honoured ritual within the Cricket Club that transgressions of a minor nature throughout the season get logged away in Tim Gilbert's little red book, only to re-emerge in the public court of opinion one autumnal evening. Some may have made a rather regrettable assumption that half a sports hall represents a division on the longitudinal rather latitudinal; others may have tripped up over the simple task of adjudicating correctly on run-outs. Mostly the time is spent listing Jimmy Gray's weekly contrivances to fall foul of the cricketing gods.

Technology moves on a-pace, and so we were also treated to a truly global gathering as Tim, defying a sensible division of what is acceptable on a honeymoon, joined to doff his cap to peers from Mexico.

The true nature of the event, however, is to record in the history books the winners of the coveted prizes for the season. Walsham can, therefore, join in congratulating the roll of honour below:

U13's Player of the Year

Mr. Jack Campbell

U13's Batsman of the Year

Mr. Tobias MacRae

U13's Bowler of the Year

Mr. Monty Bailey

U13's Most Improved Player of the Year

Ms. Harriet French

U11's Player of the Year

Mr. Kasper Howling

U11's Batsman of the Year

Mr. Albie Bryant-Howe

U11's Bowler of the Year

Ms. Elodie Brown

U11's Most Improved player of the Year

Mr. Matthew Moynehan

1st Team Player of the Year

Mr. Steve Moulton

2nd Team Player of the Year

Mr. Luke Ridding

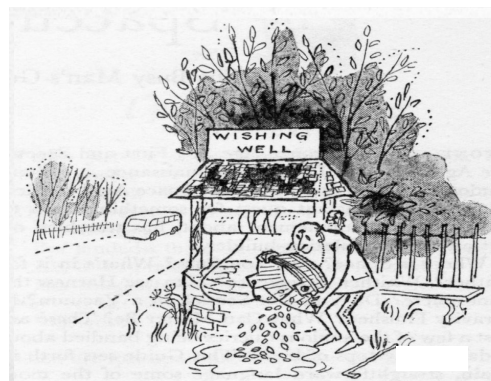
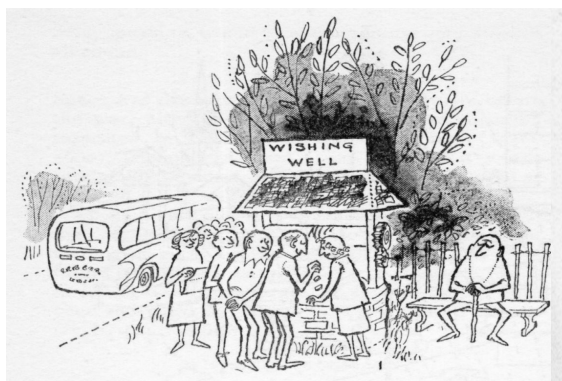
Sunday XI Player of the Year

Mr. Tom Ridding

Chairman Rick was also able to rightfully correct the missed recognition of Mr Peter Knight – our venerable seam-up stalwart of many years – for two 5-fers some 10 years back. The same was achieved by Waugh, Bryant and Howe this season.

Mr Ashley Forbes clubbed his way to 34 sixes in the season and also scored hundreds with Messrs. Ross, Scarce, Smithers, Ridding and Jackson. ChatGPT will have some work summarising this next season.

James French





Pawfect Moments

Dog Walking & Petcare

(Badwell Ash and surrounding villages)



I am available to walk your dog/dogs, provide doggy day care, pet sitting and home visits for feeding, medication and toileting.

I appreciate that all pets are different and have a variety of needs, therefore I always start each relationship with a free home visit. I am fully insured and have attended a Canine First Aid course.

I look forward to hearing from you.....

Caroline Morris 07843 248 411

cdv_11@hotmail.com

Graeme Green

Electrical Services Ltd

A local Electrician, qualified with 20
years experience.
Offering a friendly and reliable service.

Residential and Commercial.
Fully Insured.

Available for all of your jobs large
or small.

For a free quote call or email
Graeme.

Email: graemegreenelectrical@gmail.com
Call: 07950 335966



**Special cakes
for
special celebrations**

Jean Barker 01359 241135

www.amazingcakesbyjean.co.uk

TONY FISHER

PLUMBING & PROPERTY MAINTENANCE

24Hr Emergency Callout Burst, Leaks, Blockage, etc Bathroom/shower installation
Tanks/cylinders/radiators Tiling floors/ walls Painting & Decorating
General DIY jobs Garden maintenance

Tel: 01359 242556 Mobile 07758 327743

Reliable & friendly service

SPORTS CLUB REPORT

Football.

The season is now in full swing and Walsham First Team have improved dramatically. They had lost every game until they played hosts to Dereham Town in the FA Vase on 25th August. A header from Jack Brame put us ahead in the first half but Dereham equalised in the second half to force penalties which we ended up winning 4-3. It was the first time we have beaten Dereham in a competitive game. We then beat Long Melford 4-0 away at Stonylands. We drew 0-0 away to Heacham and returned to the Morrish Stadium to comfortably beat Brantham Athletic 4-0. We lost 2-0 at home to a very good Mildenhall Town side and had Sam Nunn controversially sent off towards the end of the match. Our latest game saw us lose 2-1 away to highly fancied Thetford Town, for whom they have the league's best player in Cameron King, but we played very well and deserved a draw at least. Callum Don Gray was our goal scorer and we had a very confident penalty award turned down late on in the game.

The under 23s beat Stowmarket 5-2 at home but that result is the only win they have recorded so far.

The Reserves have only played 1 game to date and lost 1-0 at home to Grundisburgh Reserves despite have many chances during the game. The Under 18s narrowly beat Hadleigh United 2-1 in the FA Youth Cup. Jayden Murphy scored both goals. They lost their latest match 3-1 away to League Leaders Ely City and had goalkeeper Ollie Moore sent off after half an hour.

The Vets have suffered two heavy defeats in their opening matches.

Home Fixtures for October.

7th Reserves v Coplestonians 2pm

28th Reserves v Henly Athletic 2.30 pm

14th Under 23s v Whitton United 3pm

12th Under 18s v Royston Town 7.45pm

21st First Team v Newmarket Town 3pm

22nd Vets v Bury Town 2pm

24th Under 23s v Woodbridge Town. 7.45pm

29th Vets v Coplestonians 2pm

Gordon Ross





HALLOWEEN DJSCO

Walsham le Willows Sports Club

Saturday 28th October

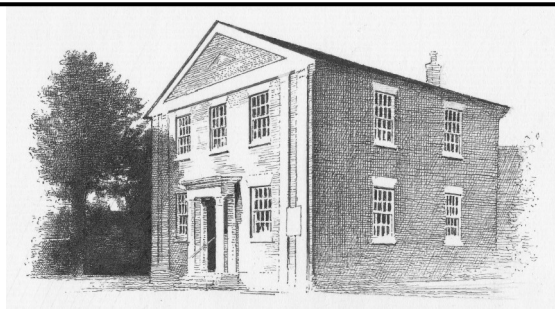
7pm till Late

Prize for Best Fancy Dress

Face Painting, BBQ and Raffle

Admission FREE





Walsham Congregational Church

The Street, Walsham-le-Willows, Suffolk. IP31 3AZ

Church Secretary (John Landymore)

01359 - 258986

We are open for worship each Sunday at 11.00 & 6.30 so why not come along? Please be assured of a warm welcome; it would be lovely to see you.

Gold Sovereigns for a Penny

Many years ago, when the British pound was worth far more than it is today, it took the form of a solid gold coin called a sovereign. Two merchants were taking their lunch together, not far from London Bridge, and the conversation turned to the suspicious attitude of many people whom they had met, who when showed kindness, would doubt and suspect some selfish motive. At last, one of the men declared, "I believe that if I was to stand on a corner of London bridge with a tray of gold sovereigns, fresh from the mint, and try to sell them for one penny each, very few would be sold in an hour." All that seemed likely to resolve the issue was to risk losing a few pounds and put the matter to the test: they decided to assume a good vantage point and watch an employee try to sell sovereigns for a penny each.

This was done, and quite an ordeal it turned out to be for the poor salesman who, standing in a busy spot with a small tray of shining new gold coins cried out, "One penny each, real gold sovereigns for a penny!" Many ignored him, some laughed in his face and passed by, while others called him a liar and a rogue, supposing his wares to be fake and not even worth a penny. Indeed, few coins were sold during that hour, costing the merchants very little.

As the salesman had cried out, a man was crossing the bridge on his way home and, despite the protests of a friend, bought one of those coins to take home to his wife. Later, during tea, he passed her the gift which she thought to be a splendid imitation: then she looked a little closer and, ringing the coin upon the table declared, "It is real, I'm sure of it". Looking again, the husband was convinced that it was real gold so immediately rushed back to London Bridge to purchase some more; however, to his great regret it was too late, for the salesman had gone!

How many people that day missed out? How many dismissed what the salesman said, or ridiculed his wares without properly considering what was on offer? Likewise, how many will come to the end of their lives and will have ignored what the Bible has to say and dismissed all that God offers in the Gospel? All that was required to purchase a gold coin was a penny, yet so few bothered, however, the Bible tells of something far more valuable and precious that a sinner can have "*without money and without price*" (Isaiah 55:1) but so many will never benefit and simply do not believe it to be real. Before it is too late and the opportunity passed, "*believe on the Lord Jesus Christ and thou shalt be saved*" (Acts 16:31) and receive the free gift of Salvation, the joy of sin forgiven, and prospect of eternity with Him in Heaven. There is nothing we can pay for our Salvation for it has been wonderfully purchased with "*the precious blood of Christ*" (1 Peter 1:19)

Unto you therefore which believe he is precious.
(Matthew 26:7)

Sweep 'n' Clean

HETAS Registered
Wood Burning Stove Installers
Qualified Chimney Sweeps
Bird Cows Fitted
Gutter Clearing
Driveway Power Washing
Fully Insured
FREE Site Survey



Email: contactus@sweepnclean.co.uk
Web: www.sweepnclean.co.uk
Office: 01359 232955

BROWN'S



SERVICE

All Types of
Tree Surgery
Undertaken

Thinning Reductions
Deadwooding Felling
Storm Damage

All types of hedges, shrubs
and fruit trees pruned.

Seasoned logs and
woodchip mulch delivered

For a Free Quote ring

01359 259149

Mobile 07881 816761

Chainsaw Certificate
City & Guilds Qualified
Public Liability Insurance

THE SETING SUN

The horizon glows radiant in the setting sun
and I feel the aura of its warmth and power.

Across the fields of harvest

I smell that sweet aroma

as of cake and biscuits oven fresh

which Maggie lays to cool upon the rack.

I watch the sun decline

and feel the cool of evening settle on my brow

knowing that this day is drawing to a close,

Yet the beauty that is passing

has been and will forevermore be mine.

Rob Barber

August 10th 2013



J W Amps Ltd



Offering service and repairs to all types and makes of garden machinery, ATV's, compact tractors etc.

Machinery bought and sold

Over 15 years experience – factory trained by Briggs & Stratton, Stihl, Westwood and Countax.

Collection and delivery service available.



Contact Simon

Mobile 07974 430366



E-mail: simonamps@btinternet.com

Stuart Walker



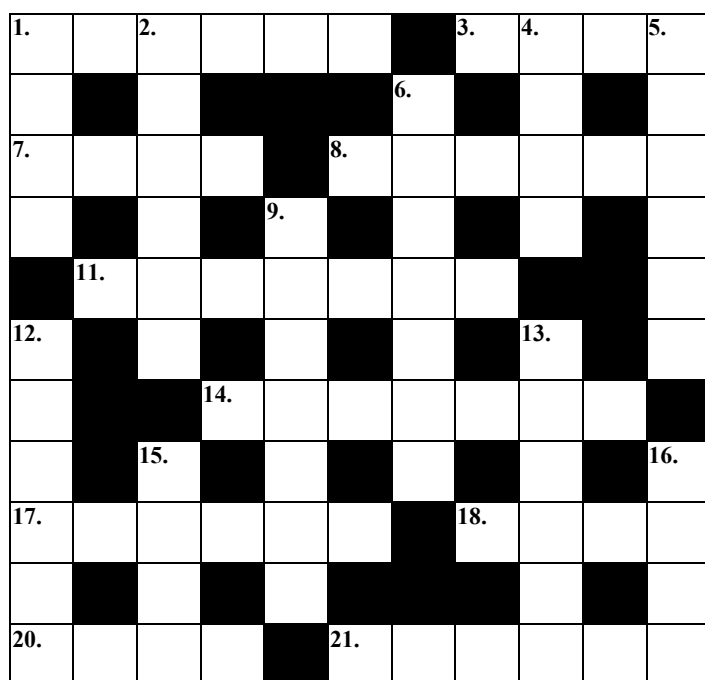
Decorating, Painting & Refurbishments

A locally based company offering an honest and reliable service.

Painting - Decorating— Refurbishments - Repairs.

All work considered indoors & out! Fully Insured & free quotations provided. Please contact Stuart on Tel: 07711 606 464 or Email: stuma1@hotmail.co.uk

WALSHAM OBSERVER CROSSWORD



ACROSS

1. Just a parcel for the boat. (6)
3. Cut down the cereal. (4)
7. Can manage to set a small operation in the church. (4)

8. Is the first batter in the key? (6)
11. Give up on some French couple. (7)
14. Such digits for measuring a drink. (7)
17. Fits followers at the beginnings. (6)
18. Sounds like a poet is finished. (4)
20. Might Hamlet condescend? (4)
21. Spread out and let off. (6)

DOWN

1. The rate of the quiet expert. (4)
2. Is the boiler on the beat? (6)
4. Torn in the parental split. (4)
5. It's a drink for the traveller's assistant. (6)
6. Such water sources found in bed. (7)
9. Hurries for small copies. (7)
12. Shaped to be organised in stages. (6)
13. Such strong feeling can be found when we award ourselves a bonus. (6)
15. It's the thread of a story. (4)
16. Nearly listened to a group of cows. (4)

OCTOBER CHURCH SERVICES

1st October

11.00am

11.00am

8th October

8.00am

9.30am

15th October

11.00am

11.00am

22nd October

8.00am

11.00am

3.00pm

29th October

9.30am

5th November

9.30am

11.00am

17th Sunday after Trinity

Family Communion

Harvest

18th Sunday after Trinity

Holy Communion

Holy Communion

19th Sunday after Trinity

Family Communion

Songs of Praise

20th Sunday after Trinity

Holy Communion

Holy Communion

Evensong

Last Sunday after Trinity

Holy Communion

4th Sunday before Advent

Morning Prayer

Family Communion

Walsham

Finningham

Walsham

Westhorpe

Finningham

Walsham

Walsham

Wattisfield

Westhorpe

Badwell Ash

Finningham

Walsham

REGULAR

MONDAY

Community Lunch Village Hall
2nd Monday 12:45pm

Walking Football Sports Club
8:00pm till 9:00pm

TUESDAY

Walking Netball Sports Club
10:00am till 11:00am

Pilates Class Village Hall
1:30pm till 2:30pm

Walking Football Sports Club
2:00pm till 3:00pm

WEDNESDAY

Pilates Classes Village Hall
9:15am till 10:15am

Yoga Sports Club
10:00am till 11:30am

Positive Steps Sports Club
11:30am till 12:30pm

Wednesday Wanders Sports Club
11:30am till 12:30pm

Carpet Bowls Sports Club
2:30pm till 4:00pm

WI Meeting Priory Room
7:45pm Second Wed of the Month

EVENTS

THURSDAY

Coffee Shop Village Hall
10:30am till Noon

Post Office Van Village Hall
11:00am till Noon

Yoga Sports Club
1:15 pm till 2:15pm

Walking Football Sports Club
2:00pm till 3:00pm

Pétanque Sports Club
2.00pm till Bouled Out

Walking Netball Sports Club
6:00pm till 7:00pm

Community Yoga Priory Room
7:15 pm till 9:15pm

FRIDAY

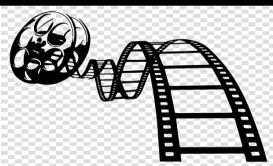
C & A Coffee Shop Village Hall
9.00am till 11.00am

Cardio Tennis Sports Club
12noon till 1:00pm

SATURDAY

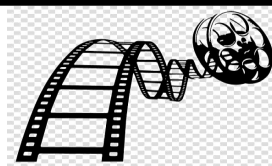
Pop-up Shop Village Hall
Last Saturday in the month

SUNDAY



STANTON VILLAGE CINEMA

Friday 13th October at 7:30pm



THE UNLIKELY PILGRIMAGE OF HAROLD FRY (12A)

Jim Broadbent Penelope Wilton

Harold is an ordinary man who has passed through life, living on the side lines, until he goes to post a letter one day . . . And just keeps walking.

Tickets on the door, adults £5.00—under 17's: £3.00

Tea/coffee and refreshments,

ALL THE ANSWERS

Page Bottom Quiz

1. Amsterdam, 2. Gloucestershire, 3. Dame Ethel Smyth, 4. Manchester,
5. Mao Tse-tung, 6 Ken, 7. (Robert) Jenkins, 8. Christine Keeler, 9. The orchid,
10. Egyptian and Greek, 11. New Zealand, 12. Two, 13. Nine, 14. Australia, 15. K2,
16. The bells of St Clements, 17. Horses, 18. 1,000, 19. Manchester,
20. Sea bird droppings, 21. Mae West, 22. The question of Slavery,
23. The Indian Ocean, 24. The pelican, 25. Donald Campbell, 26. Uranium,
27. The Rivals, 28. The sweet briar, 29. Maize, 30. Domino, 31. The curate's,
32. Noah's family, 33. On top of an elephant, 34. Spinning-wheels,
35. A pottery fragment, 36. Oxygen, 37. Macbeth, 38. Zimbabwe, 39. Karl Marx,
40. Abraham, 41. Robert Schumann, 42. Tinkerbell, 43. Clubs, 44. Violins,
45. The heel, 46. Lawrence of Arabia, 47. Public hangings, 48. D H Lawrence

Sudoku

1	2	6	3	4	8	9	7	5
9	8	5	2	7	1	3	4	6
7	4	3	6	5	9	8	2	1
6	7	4	9	8	3	1	5	2
3	5	2	7	1	6	4	8	9
8	1	9	5	2	4	7	6	3
4	6	8	1	3	5	2	9	7
1	9	1	4	6	7	5	3	8
5	3	7	8	9	2	6	1	4

Crossword

P	A	C	K	E	T		C	R	O	P
A		O				S		A		O
C	O	P	E			O	P	E	N	E
E		P		S		R		D		T
	D	E	S	P	A	I	R			E
P		R		R		N		A		R
H				F	I	N	G	E	R	S
A		Y		N		S		D		H
S	T	A	R	T	S		D	O	N	E
E		R		S				U		R
D	A	N	E			S	P	A	R	E

More or Less

5	1	4	3	2
4	2	3	5	1
2	5	1	4	3
3	4	2	1	5
1	3	5	2	4

Searching for Words

And	Ant	Ante	Are	Art
Ate	Dean	Dear	Den	Dent
Due	Duet	Dune	Ear	Earn
Eat	Eaten	End	Endure	Entreat
Eta	Near	Neat	Net	Nude
Nut	Ran	Rand	Rant	Ranted
Rat	Rate	Rated	Rend	Rent
Rude	Rue	Rued	Run	Rune
Runt	Rut	Tan	Tar	Tare
Tarn	Tart	Tea	Tear	Ted
Ten	Tend	Tent	Treat	Treated
Trend	True	Trued	Tun	Tuna
Tuned	Tuner	Turn	Turned	Unrated
Urn	Untreated (67)			

USEFUL TELEPHONE NUMBERS

Community Council Secretary
David Murray **01359-258646**

Police
Suffolk Police **01473-613500**
Stowmarket **01473-383400**

Neighbourhood Watch

Surgeries
Ixworth **01359-230252**
Stanton **01359-251192**
Botesdale **01379-898295**
Woolpit **01359-240298**

Parish Council Chair
Richard Belson **01359-258868**
richardbelson@
btinternet.com
Parish Council Clerk
Kevin Boardley parishclerk@
walsham-le-
willows.org

Anglian Water
Emergencies (24hr) **08457-145145**
Accounts **0800-919155**

Eastern Electricity **0800-7838838**

British Telecom
Customer Service **150**
Line Faults **151**

District Councillor
Richard Winch **07931709486**

County Councillor
Mrs Jessica Flemming **01449-711065**

Suffolk County Council **03456-066067**

Member of Parliament
Jo Churchill **0207-2198487**

VILLAGE ORGANISATION CONTACTS

Allotments Group
Mel Wasley / Debbie Licata
walshamallotments@gmail.com

History Group
Frances Jenner 01359-259242
frances.jenner@hotmail.com

Horticultural Show
Debbie Licata 01359 259686
debbiewatson2916@gmail.com

Sports Club
Mike Powles 07379089890
mike.powles@btconnect.com

Walsham Wild Wood
Lorna MacKinnon 01359 259140
mackinnonlorna@gmail.com

Women's Institute
Pippa Baxter 01449781757
pippabaxter2@gmail.com

Community Yoga
Julia Dunnicliffe 07980 476 140
dunnicliffej@hotmail.com.



WALSHAM LE WILLOWS VILLAGE HALL

The Community Council committee
welcome you to the

MVH Coffee Shop

In the Garden and the Hall

Open under government guidelines for
village halls and COVID 19

Open every Thursday

From a time of 10.30am to 12.30pm

The Post Office van is there

From 11:00am till 12:00pm

**Come and enjoy a chat and
A cuppa and a bite
Just for ‘a couple of quid.’**