

WALSHAM OBSERVER

VOTE
on 21st
November
2023

**WALSHAM-LE-WILLOWS
NEIGHBOURHOOD PLAN
REFERENDUM**
See pages 28 & 29

Vote at
Walsham
le Willows
Memorial Hall,
The Street,
IP31 3AA

NOVEMBER 2023



Walsham-le-Willows

Memorial Village Hall

Hire Charges for 2023

All Day £135
Hourly £13.50

For Bookings and Enquiries
Contact Number 01359 258698
(answerphone available)
or email
sarah@octopusadmin.co.uk



Automated External DEFfibrillator (AED)

Located in the refurbished red telephone kiosk outside the Memorial Hall this AED has been registered with the East of England Ambulance Service and can be accessed via a digital keypad. The access code can be obtained by simply dialling 999 and asking the Ambulance Service. For reference purposes the location postcode is IP31 3AA.



THE WALSHAM OBSERVER

NOVEMBER 2023

No 656

Published and distributed by the Walsham Community Council.

EDITOR Mr I R Toulson
01359-259646 iandmj@outlook.com

PRINTED by Gipping Press of Needham Market
Tel: 01449 721599 email: enquiries@gippingpress.co.uk
& **DISTRIBUTED BY** Volunteers

ITEMS FOR PUBLICATION

These should be dropped by **FRIDAY 24 NOVEMBER** into the box provided in Rolfes or emailed to the above address.

Advertisements should reach the
Advertising Manager by **MONDAY 20 NOVEMBER**

ADVERTISING MANAGER Cheryl Bartholomew
01359-258349 walshamobserveradverts@gmail.com

The Community Council takes no responsibility for the accuracy or otherwise of advertisements published in the Walsham Observer.

ADVERTISEMENT RATES

Quarter-page £60 per year £15 per month

Half-page £100 per year £20 per month

WALSHAM-LE-WILLOWS COMMUNITY COUNCIL **EXECUTIVE COMMITTEE**

CHAIR Trevor Roberts
01359-251144 acorn-house@hotmail.co.uk

SECRETARY David Murray
01359-258646 dwm599@googlemail.com

TREASURER Ian Bartholomew
01359-258349 IBarth2@aol.com

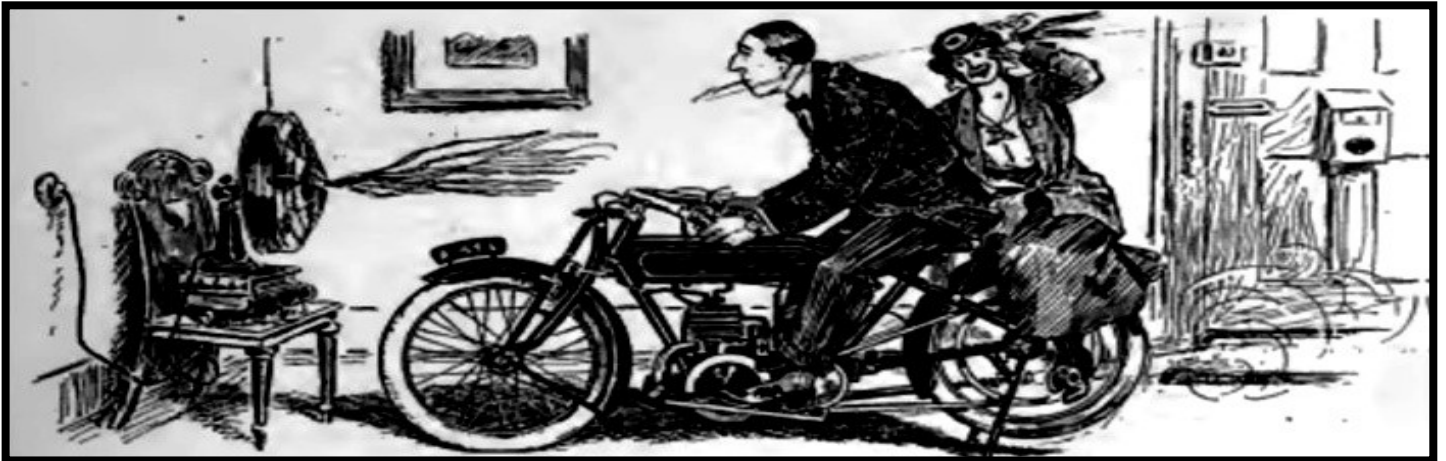
www.walsham-le-willocks.org

Contact telephone number: 01359 258698
(answerphone available)

Contact email: sarah@octopusadmin.co.uk

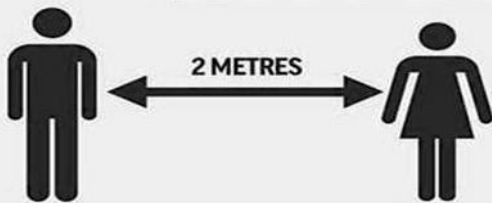
CONTENTS

Editorial	2	Diary of Events	21
Village Hall Update	3	Referendum	25
A Thank You	3	Walsham Art Group	27
Walsham Primary School	5	Parish Council Minutes	29
Jerry Bliss	5	Wildlife in November	35
Citizens Advice	7	The Hellgate Club	37
Women's Institute	9	More or Less	37
Royal British Legion	9	Green Dilemmas	39
Your Wood Needs You	11	History Group (Bevin Boy)	41
History Group Meeting	13	Sports Club Report	43
Observer Sudoku	13	Spot the Difference	45
Open Gardens Funding Bids	15	The Ballad of Abdul Rowe	47
Community Lunch	15	Observer Crossword	49
Flower Power Project	17	November Church Services	49
Searching for Words	17	All the Answers	51
Traffic Calming Survey	19		



WHEN WALKING IN THE VILLAGE

**YOU NEED TO STAY 2 METRES
APART TO SAVE LIVES NOW**



Please take the 2 meter distancing rules seriously. This protects everyone. It is a simple and very much appreciated courtesy and no one will take offence.

If you pass people with children, or elderly people who may not be as agile, please give some thought to how much easier it may be for you to cross the road to maintain a social distance of at least 2 metres from them.

EDITORIAL

Just in keeping with the recent weather I have been deluged with requests for space in this month's edition. I have just managed to get everything in; hopefully to everyone's satisfaction, although I realise one cannot please all of the people all of the time. Now who said something like that?

The really important item coming up this month is the **Local Plan Referendum** on **Tuesday 21st**. The result may well have a bearing upon how the village develops over the next few years, so please make every to vote.

After September's success with the film and supper in the Village Hall, there is another **Film & Supper** evening on **Friday 10th**. The Film this time is 'Under the Tuscan Sun'. To obtain tickets look at page 18. We are assured of 'New Brighter Projection', so this should be another enjoyable evening.

There was an excellent **History Group** on the Bevin Boys, so hopefully the talk on **Beds, Banquets & Balls** on **Wednesday 15th** will be equally enjoyable, if so it will be another feather in the cap for the group.

The W.I. are holding their annual **Quiz** on **Friday 17th** (see page 22). Earlier in the month they are having a Singalong at their monthly meeting on Wednesday 8th.

At the end of the month the **Walsham Arts and Crafts Group** are holding their annual exhibition. The exhibition is open from **10am till 6pm** from **Saturday 25th to Monday 27th**.

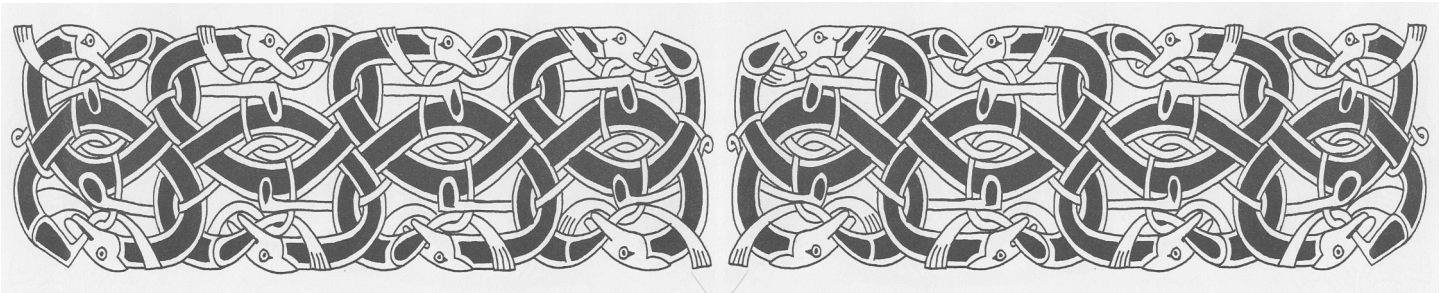
If you like the thrill of the 'Spin of the Wheel' or 'Turn of the Card' then get to the **Sports Club** on **Saturday 25th** when a **Casino Night** is taking place, See page 24 for further details.

At the beginning of December (Saturday 2nd) there is the annual **Tree Lighting and Fete at St Mary's**. This is an enjoyable event and sees the 'Mighty' Walsham Male Voice Choir giving the annual performance under the 'direction' of John Hall, who is making a special visit for the occasion.

Having got the entertainment out of the way, there are plenty of details about forthcoming projects. Help is sought for the **Flower Power Project**. As there was plenty of assistance with crocheting or knitting poppies for the church a few years back, maybe some will welcome the opportunity to use their skills for another good cause. For further details look at **Page 17**.

Also take a look at **page 11** to see how you might be able to assist with ensuring that the **Wild Wood** flourishes. It might require a slightly longer commitment but the satisfaction of helping to provide the village with a lasting asset.

Let us hope that we don't get a repeat of **Friday 20th** for some time, but when we do let's hope that we will be really prepared for dealing with it and its aftermath. This time Stirling work was done by a number of villagers to help those who were badly effected by the floodwaters.



VILLAGE HALL UPDATE

During the course of November, the usual bookings continue including self- defence and Pilates classes as well as our usual coffee morning on a Thursday and the Community Lunch on the second Monday of the month.

After the very successful themed film night in October, we hope to continue these during the next months and our next presentation will be on Friday 10th November with the film 'Under the Tuscan Sun' as previously the theme of the night will reflect the film title so the meal will consist of Tuscan pork and bean stew with a vegetarian option.

It's early but just a note for the diary. Our Special Christmas Community Lunch will be on Monday 11th December the cost will be a little higher than usual at £12.50 to include Buck's Fizz on arrival and there are a lot of little extras to enjoy.

Rob Matthews



A THANK YOU FROM THE PARISH COUNCIL

A big thank you to **all** who helped on Friday during the flooding, not seen in Walsham le Willows since the 1960s. There were road closures and several properties suffered. A big community effort in support of affected people was much appreciated, including the rescue and ferrying of people through the flooded streets on tractors to and from work and school. Thanks to all who stepped up in particular Paul Hubbard (thru' to 11pm!) and Clarkes of Walsham (there were probably others). Thank you also to all residents who have been helping clear-up over the weekend, in particular, Margaret from Wattisfield Road and her daughter who pluckily kicked off the clearance of debris from the roads.

Increasingly unpredictable weather is likely to impact all of us so what we need to do to try to adapt and mitigate needs some thought. At its next meeting the Parish Council will address what else it is able and funded to do to help, working of course with the District and County Councils, Environment Agency and Anglian Water, including what advice can be provided to help us all think through what we can all do to better help ourselves as a community.

*Parish Clerk
for the Parish Council*





WEST SUFFOLK HORSEBOX SERVICES LTD



**We are a local, family run garage in Walsham-le-Willows who deal in,
Horsebox, Van, 4x4, Car and Lorry servicing and repairs.**

**Welding - Air conditioning - Car and HGV Diagnostics - Tyres
HGV MoT Preparation and Presentation
Hybrid and Electrical Qualified Technician**

**NEW to 2022. Car, Van, minibus and 4x4 MoT bay. Classes 4,5 and 7
Vehicle Collection and Courtesy Car Available, Subject to availability.**

**Unit 2, Old Bomb Store Summer Road IP31 3AJ
Telephone 01359-259994
Email wshorseboxservices@gmail.com**

WILLOWSERVE LTD

plumbing & Heating Services

- ✓ Worcester Bosch Approved Installers with up to 12 Years
Warranty on Worcester Bosh Boilers
- ✓ GASSAFE, OFTEC, C.I.P.H.E, CHECKATRADE, TRADING
STANDARDS approved
- ✓ Replacement Boilers, Hot Water Cylinders, Underfloor Heating, Servicing,
Repairs, General Plumbing, Bathrooms etc. FREE QUOTATIONS

For a Professional Reliable Service

**Tel: 01359 259886 Mobile: 07771 557937
willowserve_ltd@hotmail.com**



WALSHAM –LE-WILLOWS CEVC PRIMARY SCHOOL

This half term has seen the children from Years 4, 5 and 6 attend the tag rugby events at Ixworth where they played with fantastic team spirit and showed good sportsmanship throughout. Both teams played brilliantly and won some of their matches; it was great to see their pride, positive attitudes and enjoyment of playing competitive sport.

We all visited St Mary's Church for our Harvest Festival and it was lovely to see so many visitors joining us. The children did a super job with their poetry recitals as part of the learning during National Poetry Week.

We raised an impressive £84 for our Jeans for Genes Day and collected a large amount of donations for the local food bank.

The children from Caterpillars have settled into school routines so well and have started their phonics learning journey. They are looking at people in the community who help us such as police officers, paramedics and fire fighters.

Ladybirds have followed instructions to make marmalade sandwiches and written about Paddington Bear. They also walked down to the Wild Wood with Caterpillar Class and explored seasonal changes happening on our doorstep.

Dragonfly Class have been researching Asia and are writing a non-chronological report about the continent. They have painted contours of a map and have been adding and subtracting using regrouping and exchanging. They have also been swimming each week.

Grasshoppers have recreated Henry VIII in modern day clothing in art, and have found out about the lives of Queen Elizabeth 1 and Anne Boleyn. In PE they have improved over the weeks with different circuits that have included squats and lunges.

Cricket Class children have made rationed food including bread and biscuits as part of life during World War Two. They have also explored different persuasive texts whilst looking at propaganda posters.

Our theme for the next half term in collective worship is 'Respect' – where we will be looking at how members of the school community treat each other with respect; including those who have different opinions.

If you wish to make an appointment to visit or would like more information about our school, please contact Mrs McGarr, on 01359 259319 or by e-mail admin@walsham-le-willows.suffolk.sch.uk We would love to hear from you!

Maxine McGarr

JERRY BLISS

A thank you

I would like to say a huge thank you to all those who gave donations to St Nicholas Hospice at Jerry's funeral and afterwards. The hospice has informed me that a total of £504.00 was donated in Jerry's name. This is a wonderful amount and will go towards the amazing end of life care the hospice provides. I am so touched by your generosity and I know Jerry would have been too. Thank you.

Frances Jenner

Professional Chimney Sweeping

Chimney Matters

Town and Country

Mobile : 07767 864127

Phone: 01284 789663

www.chimneymatters.co.uk

email: chimneymatters@hotmail.com

- Open fires, Wood burners swept and serviced for maximum efficiency.
- Certificates issued.
- Cowls and Bird guards fitted.
- Fully insured.




botesdaledental
PRACTICE & IMPLANT CLINIC

Your local,
family run
**Dental
Practice**



Find us on
www.botesdaledental.co.uk



Tel: 01379897176

Email: reception@botesdaledental.co.uk
Botesdale Dental Practice, Holly Close,
The Drift, Botesdale, Suffolk IP22 1DH



Shine n Clean

Residential and commercial window cleaning.
A reliable window cleaning service using the latest
pure water and reach & wash cleaning system,
leaving glass sparkling clean for weeks.
No mess, no smears and no harmful chemicals

01359 259376

email: shinenclean@mail.com

A family has moved into the house next door and is being a nuisance, yelling late at night over a loud television and leaving bin bags strewn over the front of the house. I don't want to antagonise them in case they become threatening. What can I do?

Anti-social behaviour (ASB) can have a big impact on someone's quality of life, so we can understand how frustrating this situation must be.

You could try to resolve problems by speaking with your neighbour, if it's safe to do so. Explain the effect their behaviour is having and ask them to stop. If the problem continues, keep a record of incidents, which will come in handy if you decide to take the matter further.

If your neighbour has a landlord, you can ask your neighbour's landlord to speak to them on your behalf. If your neighbour lives in social housing, their landlord should have a policy for dealing with antisocial behaviour.

If you've tried everything but the problem persists, ask for an "Anti-Social Behaviour Case Review". You can do this by reporting the issue to the council, the police or a social housing provider. It means these agencies have to work together to find a solution, if the ASB meets the threshold. These agencies have powers to deal with ASB, in ways such as:

- Civil injunctions
- Criminal behaviour orders
- Public space protection orders
- Community protection notices
- Dispersal powers
- Closure powers

More information on how ASB case reviews, including how to request a case review, the threshold for it being dealt with and the process for it being dealt with can be found on

www.gov.uk/guidance/anti-social-behaviour-asb-case-review-also-known-as-the-community-trigger

If you are not online, or you need more help with this, please get in touch and we can give you more information.

If your neighbour becomes violent, you should call the police on 999.

Citizens Advice Mid Suffolk can provide advice on this issue and much more, including debt, finances, employment, benefits and family/relationships. You can contact them by phone on 01449 676060, visit in person at Milton House, 5 Milton Road South, Stowmarket IP14 1EZ or use the contact form at midsuffolkcab.org.uk/contact-us. Our opening hours are Monday-Thursday 9.30am – 3.30pm and Friday 9.30am – 12.30pm.



CLARKES

OF WALSHAM LIMITED

✓ TIMBER & BUILDING SUPPLIES ✓ GARDEN & FENCING ✓ COUNTRY STORES



SERVING TRADE AND PUBLIC SINCE 1908



www.clarkesofwalsham.co.uk | 01359 259 259

The Street, Walsham-le-Willows, Bury St Edmunds, Suffolk, IP31 3BA

Upstairs

Downstairs

A PREMIER CLEANING SERVICE

.... Bringing a sparkle into your home

Regular Housework
Trained Personnel
Safe, Secure and Fully Insured
No hidden administration charges

Tel: Gigi Wadham-Smith
on 07580314010
or email: gigi@upstairsdownstairs.biz

Timber Lodge Rookery Lane Walsham-le-Willows Suffolk IP31 3FB

Visit us at: www.upstairsdownstairs.biz

Memphis was the ancient capital of which country?



WALSHAM LE WILLOWS AND DISTRICT WI REPORT



Lucy Lewis's reputation as a first-class speaker preceded her and we were not disappointed. All her many anecdotes from her military career were delivered with engaging energy and not little self-deprecating humour. Making history by becoming Britain's first female bomb disposal expert she has gone on to lead the Cambridge University Constabulary as Marshal. Again, she was the first female to do so, trading in the military green combat uniform for a black top hat at graduation ceremonies. We were pleased to welcome visitors of both genders on this occasion and hope to do so again at our WI Quiz 17th November (Teams of four £5.00pp)

Before that at our regular our monthly meeting on November 8th we will be 'Singing along' with Alison Weston. Visitors always welcome.

Jill Newell



STANTON AND DISTRICT BRANCH ROYAL BRITISH LEGION



Branch members will attend a Memorial Service at East Wretham Church Wednesday 8th November at 10 45 am to remember Polish and Czechoslovakian airmen that lost their lives flying from RAF Wretham and Honington during WWII.

Friday evening 10th November we will be at The Apex for our Festival of Remembrance and Drum Head service.

The Remembrance services at Walsham will be as follows , Saturday 11th November at the War Memorial will commence at 10.58am and Sunday 12th the service will commence at 10.56am both times will allow for the 2minutes silence at 11am. Reverend Jill Walker will conduct both services. On Remembrance Sunday it will be the turn of the branch to parade the standard at the Stanton War Memorial.

Wednesday 15th November members will be at RAF Honington to support their Big Brew raising funds for SAFFA 10am to 11.30am.

Members will hold their Christmas Lunch Tuesday 5th December names to Brian Bartrum.

Branch funds at time of going to press was £1854-51p

Our next meeting will be held Tuesday 14th November at the Cock Inn Stanton.

Hubby Frost



TIME FOR YOU™

DOMESTIC CLEANING

Are you tired of cleaning?



We have the
right cleaner
waiting
to help
you.

Regular - Weekly - Cleaner

01359 258991

Typically £16 per hour

www.timeforyousuffolk.co.uk



CHIMNEY SWEEP



ECO SWEEP
CHIMNEY SERVICES



- POWER SWEEP METHOD USED FOR A MORE THOROUGH CLEAN THAN A BRUSH
- FULLY INSURED
- INSURANCE RECOGNISED CERTIFICATES ISSUED ON EVERY SWEEP
- GOLD MASTER MEMBER OF GUILD OF MASTER CHIMNEY SWEEPS
- ALL CHIMNEYS, WOOD/MULTI FUEL BURNERS, AGA, BOILER FLUES SWEPT
- BIRD GUARDS FITTED

TEL: (01359) 232335

EMAIL: ecosweep@live.com

FLP Motors

*Your One Stop
Friendly Garage*

- * MOT's (Class 4 & 7 Up to 3500kg)
- * MOT Repairs
- * Diagnostics
- * Servicing (Inc under 3 years old)
- * Cambelts
- * Brakes, Tyres & Exhausts
- * 4 Wheel Laser Alignment (tracking)
- * Clutches
- * Air Conditioning Servicing
- * All Repairs Carried Out

**Free Collection and return
or courtesy car available**

Call Vic: 01359 250671

Flpmotors.com

MOT's £40 with this advert (Class4)

**Unit 23a, Shepherds Grove Ind Est
Stanton IP31 2AR**

Natural Balance Reflexology and Massage

Experienced reflexologist with
advanced training in:

- Pregnancy
- Menopause
- Anxiety and Mild Depression
- Reflexology Lymph Drainage
- Hot Stone Reflexology

I also practise Full Body, Hot Stone,
Indian Head and Baby Massage.



Please contact Zoie
07968 903567

zoie.tuley@icloud.com

What are the first names of Elvis Presley's daughter?

10



YOUR WOODS NEED YOU!



After a late summer flurry of activity to mow, scythe and rake the Wild Wood and the new Jubilee Wood, we are now preparing for our autumn planting of whips and young fruit trees.

It would be great to have some volunteers to join the steering group on Sunday 19th November and again on Saturday 26th from 10 am onwards to plant our latest delivery of young trees for the Jubilee Wood. We advise you to bring gardening gloves, a small hand fork or a border fork, and possibly a kneeler but if you do not have these items you can still help out as we do have some spare equipment.

The majority of the planting will be of woodland trees but we are expecting our first group of heritage fruit trees too. The fruit trees are being funded by Mid Suffolk District Council as part of their drive to increase tree cover in the area. The varieties chosen are all of local origin and the individual trees have mostly been grafted and grown in a Suffolk nursery. We are especially keen to recruit new volunteers as tree buddies for these local fruit trees to prepare the ground, plant and nurture them in their early years. The apple trees include Lady Heniker, Clopton Red, Aldeburgh Beach and St Edmund's Russet. Henham Hall and Coe's Late Red are two of the gages in our order. Please do get in touch to select your favourite if you are interested in this scheme.

Tea, coffee and snacks keep us going and you are welcome to plant 1 tree or many. As they are whips, they are relatively easy to plant, stake and guard and as they say, "Many hands make light work!"

To offer help, please contact John or Lorna or just turn up on the day. You will receive a warm welcome and contribute to restoring nature in our local area.

Children and young people are welcome.

mackinnonlorna@gmail.com 01359 259140
john@architectatwork.co.uk 07831 325610

ALLOTMENTS ASSOCIATION

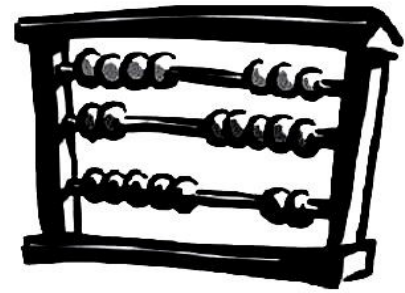


The Walsham Allotments Association currently have one full allotment plot and one half-allotment plot available for rent. (Please note that plots can only be rented by those who are residents in Walsham). If you are interested and would like to know more, please email walshamallotments@gmail.com.

Mel Wasley
Joint Secretary

TWINN ACCOUNTANTS LTD

We offer an **efficient and professional accountancy** service at a very competitive rate.



- ✓ Annual accounts and tax returns for Sole Traders, Partnerships and Limited Companies
- ✓ Preparation and assistance with VAT returns
- ✓ Payroll Services
- ✓ Construction Industry returns
- ✓ Management Accounts
- ✓ Tax Planning
- ✓ Company Secretarial Services

Tel: 01284 787616

Fax: 01284 787183

Email: info@twinnaccountants.co.uk

www.twinnaccountants.com

Suite 4, East Barton Barns,
Great Barton, IP31 2QY.

All accountants are not the same...we promise!

Langham Clinic®

Holistic Beauty & Complementary Therapies

Specialised treatments performed by highly trained & experienced therapists

Sports Massage - Pilates - Manicure & Pedicure
Electrolysis - Red Vein Treatment - Skin Tag Removal
Acupuncture - Oncology Massage - LaStone Therapy
Nutritional Medicine - Aromatherapy - Reflexology
Waxing - Mindfulness - Hypnotherapy - CBT

Dr. Hauschka Treatments (Holistic face & body treatments)

Everything possible at Langham Clinic is organic, sustainable & carbon neutral

www.langhamclinic.co.uk

Langham Grange, Stock Hill, Langham, IP31 3EE

Tel: 01359 258 700

HISTORY GROUP NOVEMBER MEETING

Bedrooms, Banquets and Balls

Speaker: John E Vigar

This talk promises to be an off-beat and amusing look at the development of the English Country House and takes as its starting point the medieval Hall-House and follows architectural tastes and fashions to the mid twentieth century. It looks at the architecture of the houses, their furnishings and the way in which the rooms were used in different periods.

We also hear about the people who lived in these buildings – many of them eccentric and memorable – and discover the ways in which their whims fashioned the houses we see today. We will hear about exploding cakes, mistresses and exotic princes.

Some of the houses included in the lecture are open to the public, but several private homes offer a different vision.

John Vigar was personally encouraged early in his career by John Betjeman and is a Trustee of a national charity of which Betjeman was a founder. He is an architectural historian by profession. He also lectures for several universities and colleges and extensively across Europe and until his retirement worked for The Churches Conservation Trust.

Do come along to the Priory Room on Wednesday 15th November at 7.30pm if you would like to hear more. We look forward to welcoming you. Members free. Non-members £5.00

If you would like further information on the History Group or how to become a member, then please contact Frances Jenner on 01359 259242 or frances.jenner@hotmail.com.

Frances Jenner



WALSHAM OBSERVER SU-DOKU

								5
		4	1		3		8	
	2				8			6
5			7			9		
7			9		5			4
		1			6			8
2			8				7	
	4		5		7	3		
3								

For the uninitiated, the rules of Sudoku are very simple.

Each row, column and large square must contain the numbers 1 to 9 inclusive.

It's as simple as that, but you must apply logic to find which number goes where.

So, beginner or expert, happy hunting!



FITNESS



CONTACT US

- lsfitness35@gmail.com
- Lewis - 07740 185204
- Sam - 07860 102306

A functional fitness inspired gym based in Allwood Green. We promote a healthy, active lifestyle through dedicated Functional Fitness, CrossFit and Personal Training for all ages and abilities within our custom built, well equipped training facility.

Units 20/21, Rickingham Business Centre,
IP22 1LQ

LS-FITNESS.COM

SERVICES

- Group Fitness Classes
- Kids Classes
- 1-2-1 Personal Training
- Sports Performance Sessions



Ordering your heating oil through **CERTAS ENERGY** can help **YOUR SPORTS CLUB**



They will make a contribution to the Sports Club of
£10 per 1000 litres or £5 per 500 litres

Call 01603 885100 (sales team)
or 01603 885236 (service team)

Every order so far placed, has been competitively priced against other
suppliers - why wouldn't you help yourself and us

“All contributions gratefully received”
says Ian Campbell (Treasurer)

OPEN GARDENS WEEKEND

Funding Bids

Further to my report on the success of the Open Gardens Weekend (October 2023 Issue), **we are now open to bids for funding** from the profits that we have accrued from the weekend. We invite any properly constituted Walsham organisation to contact us with their costed ideas and projects.

We shall fully consider each and every application and the more information you can give us the better. Feel free to give me a call to discuss your ideas if you wish.

The bid period ends on the 31st of January 2024 and you can send them to the Hon Treasurer at garthharlow@outlook.com or drop hard copies through my letter box. We shall be taking decisions in early in February 2024.

Warm regards from the Open Gardens Team.

Collen Baker

Chair of the Walsham Le Willows Open Gardens Trust

collen@cool-tech.co.uk 07831 560450



COMMUNITY LUNCH



Where has the year gone, I can't believe it's nearly Christmas!

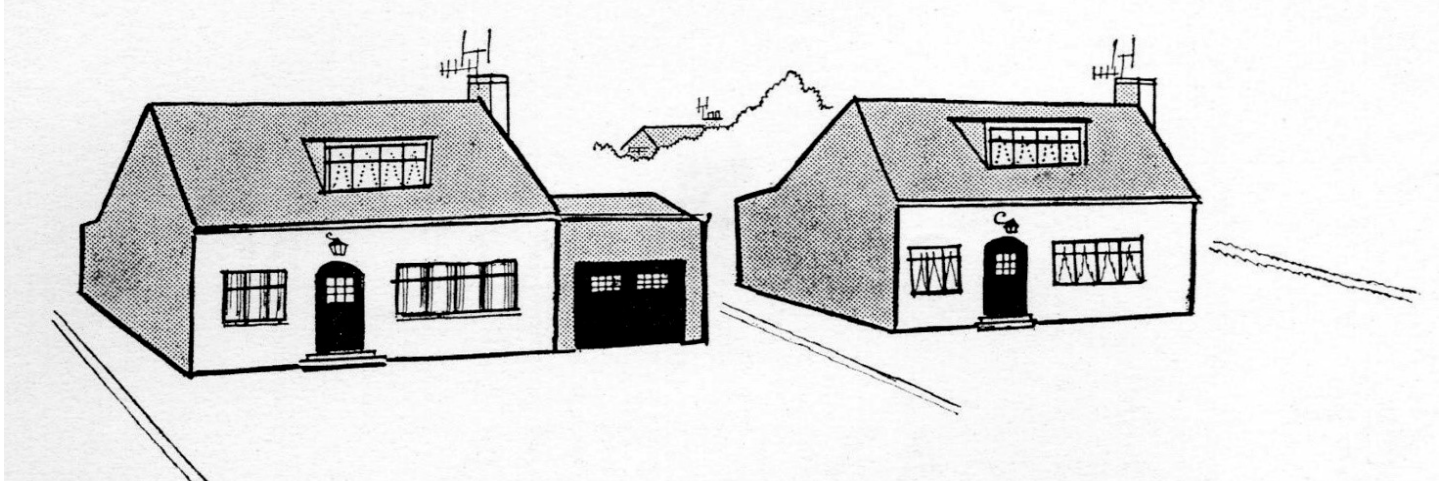
The Memorial Village Hall will be open from 12.30pm on Monday 13th November 2023.

Lunch will be Sausage and bean casserole with mashed potatoes and peas served at 1pm, followed by Blackberry and apple crumble with custard. Tea and coffee to follow.

We look forward to seeing you there.

Please book a place at £7.50p, with Shirley on 01359 258532 by 5pm on Thursday 9th November 2023.

Shirley White





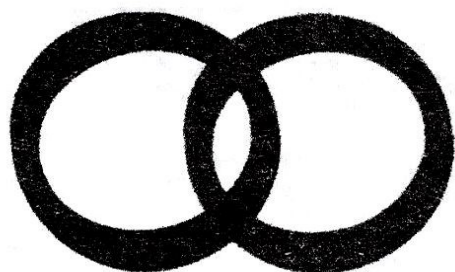
THE EPIPHANY SINGERS

St Mary's Church, Walsham le Willows
on Saturday 6th January at 7.30p.m.

This is always a wonderful event, so please put the date in
your diary — all are welcome.

If you enjoy beautiful Christmas Music
and the most wonderful singing,
this is an evening not to be missed.

Tickets are not required. There will be a retiring collection.



ROBINS ROW

Insurance Brokers Since 1867

AN INDIVIDUAL SERVICE FOR ALL YOUR COMMERCIAL AND PERSONAL INSURANCE

**SPECIALISING IN HIGH VALUE HOMES,
COUNTRY HOUSES, LISTED AND THATCHED PROPERTIES
AND ALL COMMERCIAL INSURANCE SOLUTIONS**

TEL: (01787) 378205

EMAIL: ADMIN@ROBINSROW.COM

HALL STREET, LONG MELFORD, SUDBURY CO10 9JB

AUTHORISED AND REGULATED BY THE FINANCIAL CONDUCT AUTHORITY



THE FLOWER POWER PROJECT



Can you knit or crochet? Would you like to be part of a historical community event? The Flower Power Project is a not-for-profit community of around sixty-five friendly knit and crochet volunteers aged between 16 and 94 years old who have joined together with the aim of creating a knitted and crocheted textile tableaux of joyous, colourful amassed flowers to adorn the outward facing wall of St Marys Churchyard for the “Gardens” weekend. Starting at the Priory rooms the work will flow along the wall and around its perimeter.

The group includes contributors from our own village, from surrounding villages and towns further afield. We already have around 700 beautiful and diverse flowers made. We aim for several thousand pieces. Our group is working in collaboration with **Walsham Open Gardens Weekend 2024**. Visitors to the Open Gardens Weekend will immediately see the installation as they leave the car park. It will act as a welcome and a prelude to our village’s already successful and much-loved event.

There are no particular flower patterns to follow so you are free to select your own; any yarn or size and the brighter the better! It’s a great way of using up your yarn ends and a cosy fireside project for the winter months.

Your enthusiasm, creativity and ingenuity will dictate the outcome.

The Facebook Group Page is “The Flower Power Project,” or you could scan the QR code which will direct you to our group where you can request to join.

Non-Facebook users can get involved by emailing catemhadley@gmail.com to add your name to our e-bulletin list for regular project updates. We have local drop off points for contributions and a yarn donation/swap initiative, plus a series of social events planned for members.

<https://www.facebook.com/groups/260025373634968/>



SEARCHING FOR WORDS

F	O	R
D	E	A
E	M	R

Starting with any letter and moving horizontally, vertically or diagonally, see how many words of three letters or more you can find, using each letter only once in each word.

There should be one nine letter word which might make you ready for anything.

Get 40 words and you are doing well.



WALSHAM PICTUREHOUSE

presents

'Under the Tuscan Sun'

A cinema evening with themed supper

(With new brighter projection)

Friday 10th November – Doors open at 6.30 pm

Supper served at 7.15 pm – Paying bar
available throughout the evening

Under the Tuscan sun is a 2003 romantic comedy drama film written, produced, and directed by Audrey Wells and starring Diane Lane. Based on Frances Mayes' 1996 memoir of the same name, the film is about a recently divorced writer who buys a villa in Tuscany on a whim, hoping it will lead to a change in her life.

Menu

home cooked Tuscan Pork and Bean Casserole

tasty vegetarian option*

please advise any food allergies at point of booking

£12.50 per head to include
meal and tea/coffee

**Tickets available from 01359 258698 or
mike@mcousins.com**

(card payments accepted).

**A Walsham-le-Willows
Memorial Village Hall Event**

The Priory Room

The Priory Room in Walsham
is available to hire for private functions.

For bookings or further information, please contact:

John Boulter 07908 010555 johnboulter@yahoo.com

IS YOUR COMPUTER GIVING YOU HEADACHES?

PC & Laptop Repair
Virus Removal
Diagnose Start up Problems
Replace Hard Drives
Replace Power Supplies (PC Only)
New Laptop Screens
New PC / Laptop setups

Honest - Reliable - Affordable
Contact: Jim

01359 251946

07729 868669

email

info@completesolutions-it.co.uk

www.completesolutions-it.co.uk

WALSHAM LE WILLOWS

TRAFFIC CALMING

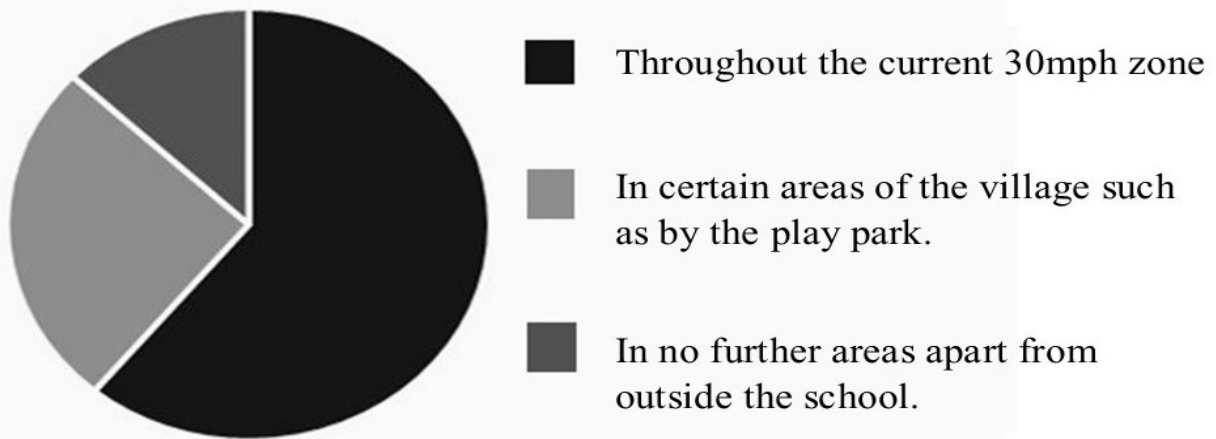
QUESTIONNAIRE SUMMARY

Thank you to everybody who took the time to complete the recent survey. It was really good to receive a range of responses and to collate so many different suggestions for traffic calming.

The survey confirmed that traffic volumes and speed and their impact on safety is a cause for concern for many residents with over 85% expressing strong concern.

It also showed a large number of people in favour of further speed restrictions in and around the village with strong support for 20 mph in some areas of the village. There was a large degree of consensus about reducing the speed limit in The Street, around the school and the playground on Townhouse Road.

Where would you like to see 20mph?

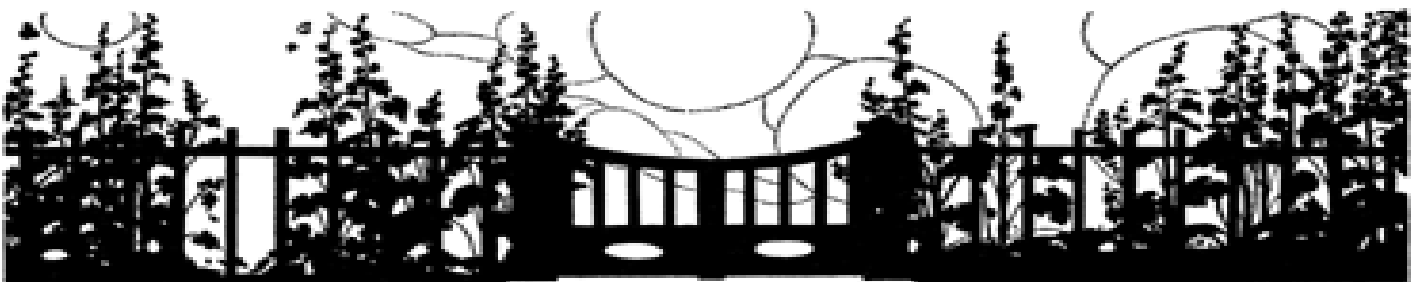


As expected in a rural location with very limited public transport, most people described themselves as car users. However, a large number of residents also regularly walk in and around the village and some cycle.

Traffic calming ideas were many and varied. These will be explored further in the next few weeks and will be shared in December's issue and on the village website.

To see more information on the survey summary, please visit <https://www.walsham-le-willows.org>

*Janette Winch
on behalf of the Traffic Calming Group*





We provide independent financial advice in the following areas:

- **Savings and Investments**
- **Retirement Planning**
- **Long Term Care Plans**
- **Estate Planning and Family Wealth Preservation**
- **Mortgages**
- **Equity Release**
- **Financial Protection**

10 Forbes Business Centre, Kempson Way, Bury St Edmunds, IP32 7AR

admin@metritawm.co.uk

01284 700619

Tax planning is not regulated by the FCA

Metritá Wealth Management is a trading name of Metritá Wealth Management Ltd which is an appointed representative of 2plan wealth management Ltd. It is authorised and regulated by the Financial Conduct Authority under no: 838586. Registered address: 10, Forbes Business Centre, Kempson Way, Bury St Edmunds, IP32 7AR. Registered in England and Wales under no. 11832336.

POLLARD & CO



Builders of Integrity

TREVOR POLLARD

Millfield
Wattisfield Road
Walsham Le Willows
Bury St Edmunds
Suffolk
IP31 3BD

Tel & Fax : 01359 258339

Mobile : 07768 124715

- New Houses • Extensions • Renovations
- Barn Conversions • Refurbishments

Email: enquiries@pollardandco.co.uk

DIARY OF EVENTS

NOVEMBER					
Wed 8th	W.I. Community Singing Priory Room	7.45pm	Sat 5th	Epiphany Singers St Mary's	7..30pm
Wed 15th	History Group Priory Room	7.30pm	Wed 10th	WI Birthday Party Priory Room	7.45pm
Fri 17th	W.I. Quiz Priory Room	7.30pm	FEBRUARY		
Sun 19th	Tree Planting		Wed 14th	W.I. First Aid Course Priory Room	7.45
Sat 25th	Casino Night Sports Club	6.30pm	MARCH		
Sun 26th	Wild Wood	10.00am	Wed 13th	W.I. Female Fashion Priory Room	7.45pm
DECEMBER			APRIL		
Sat 2nd	Christmas Tree St Mary's	4.00pm	Wed 10th	W.I. Floral Arrangement Priory Room	7.45pm
Wed 13th	W.I. Christmas Workshop Priory Room	7.45pm	MAY		
Sun 31st	New Year's 'Party' Sports Club	4.00pm	Wed 8th	W.I. Annual Meeting Priory Room	7.45pm
JANUARY			JUNE		
			Wed 12th	W.I. Wild Wood Visit Wild Wood	7.45pm

WALSHAM & DISTRICT W.I.

Sing Along

with Alison Weston

Wednesday 8th November at 7.45pm

NEW MEMBERS ALWAYS WELCOME

Ladies are able to attend 2 meetings free of charge before joining.

**POST
OFFICE**

THE MOBILE POST OFFICE

The Mobile Post Office will still be coming to the
Village Hall Car Park on Thursday mornings

from 11:00am till Noon till further notice.



WALSHAM SPORTSCLUB EVENTS FOR NOVEMBER & DECEMBER

Sunday Night Bingo

12th & 19th November and 3rd December
17th December Christmas Bingo
7pm Start in the clubhouse.

Casino Night

Saturday 25th November at 6.30pm
For further details see Page 24

New Years Eve

Further details next month

For further information phone
Julian 07597340273

Walsham-Le-Willows WI



Date: **Friday November 17th 2023**

Place: **Priory Room**, The Causeway,
Walsham-Le-Willows, IP31 3AB

Time: **7.30pm**

Teams of 4

Cost: **£5 per person.**

*Open to everyone so bring along,
family, friends and neighbours*

To **book your table** please contact:

Janet Brown – 07813794490

Pippa Baxter –

pippabaxter2@gmail.com

CHRISTMAS
market

CRAFTS
PRIZE RAFFLE
REFRESHMENTS
FESTIVE FOOD
GIFTS

SATURDAY 16TH DECEMBER
1-5PM
WALSHAM LE WILLOWS
MEMORIAL HALL

FREE ADMISSION FREE PARKING



Walsham Arts & Crafts Exhibition

25th, 26th and 27th November 2023

10.00am - 6.00pm

The Priory Room (next to the Church)

Walsham le Willows, IP31 3AB

Gillian Crossley-Holland - Alison Dane

Helen Dougall - Joff Duck

Chris Evans - Mandy Jaggard

Peter Rudderham - Mary Jane Toulson

Rob Wheeler

For further information:

Peter Rudderham 01359259433

or Helen Dougall helen@hbatik.co.uk

Payments by cash or cheques only

WALSHAM *History Group* *presents*



BEDROOMS, BANQUETS & BALLS

The development of the English Country House from the Medieval Hall to the mid 20th century. A talk by John E Vigar.

Wednesday 15th Nov 2023 at 7.30pm

Priory Room, Walsham-le-Willows.

Members Free Visitors £5.00 Refreshments



CASINO NIGHT



at Walsham Sports Club

on Saturday 25th November at 6.30pm

Dress Code - Smart / Casual

Tickets £10 (includes £50 Fun Money)

available from Mike or Sharlene

Food Available on the night



**ST MARY'S CHURCH AND
CHURCHYARD**

WALSHAM LE WILLOWS

SATURDAY 2ND DECEMBER FROM 2PM

**CHRISTMAS FETE AND TREE
LIGHTING**

with

*The School Choir..... Children's
Christmas themed craft making.....*

Refreshments..... Mulled wine.....

Real Ale..... Pizzas.....A Big Raffle.....

*Tombola..... AND return of
The Walsham Male Voice Choir*

FREE ENTRANCE

*A wonderful way to start the
Christmas festivities!*

Howard Gilbert (07711 123976)

Collen Baker (07831 560450)



REFERENDUM

Walsham le Willows Neighbourhood Plan

**VOTE
on 21st
November
2023**

Vote at
Walsham
le Willows
Memorial Hall,
The Street,
IP31 3AA

Look out
for your
polling
card

Read a copy of the Plan at
the Memorial Hall, or at
[www.walsham-le-willows.org/
neighbourhood-plan](http://www.walsham-le-willows.org/neighbourhood-plan)



Policies in the Walsham le Willows Neighbourhood Plan

The Walsham le Willows Neighbourhood Plan is a community-led document for guiding the future development of the parish until 2037 and, in particular, the use of land. It is the first of its kind for Walsham le Willows and is part of the Government's current approach to planning. This is your opportunity to vote. Below is a list of policies in the Plan.

BUILT ENVIRONMENT AND DESIGN

1. High quality and sustainable design

HOUSING

2. Scale and location of new housing
3. Housing size, type and tenure

COMMUNITY INFRASTRUCTURE

4. Community facilities
5. Drainage and flood risk

TRANSPORT AND ACCESSIBILITY

6. Pedestrian and cycling connectivity
7. Rights of Way

NATURAL AND HISTORIC ENVIRONMENT

8. Area of Local Landscape Sensitivity
9. Important Public Local Views
10. Dark skies
11. Local Green Spaces
12. Protecting and enhancing biodiversity
13. Renewable energy/solar
14. Important unlisted buildings (Non-designated Heritage Assets)

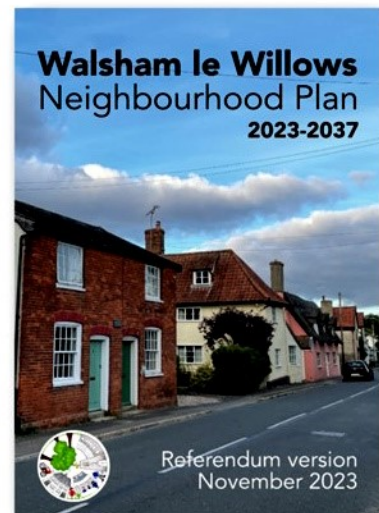
NEW AND EXISTING BUSINESSES

15. New and existing businesses

**VOTE
on 21st
November
2023**

Look out
for your
polling
card

Vote at
Walsham
le Willows
Memorial Hall,
The Street,
IP31 3AA



Read a copy at the Memorial Hall, or at
www.walsham-le-willows.org/neighbourhood-plan

WALSHAM ART GROUP EXHIBITION

**Saturday 25th to Monday 27th November
in The Priory Room from 10am till 6pm**

Do come along to meet the makers, see their work and have a drink. It's one of Walsham's annual social events!

The exhibition will include cards and small framed prints of unusual local scenes by Chris Evans. These could be just the answer for a present for Christmas or birthday.

Gillian Crossley-Holland uses water colour and pastel for her atmospheric landscapes of marshes, fens and the sea.

Joff Duck paints in oil using subjects from Scottish mountains to more local Suffolk scenes.

Helen Dougall can often be seen sketching the fields and hedgerows around Walsham. These form the inspiration for her richly patterned batiks, a skilled wax resist and dye technique,

Alison Dane creates jewellery from hand-painted paper, which is rolled and coiled, and eventually glazed for light and colourful earrings and necklaces.

Mandy Jaggard manages to hold down a fulltime job while producing highly skilled shimmering glass sculptures and pendants. She will also show some of her cards, photographs of unusual subjects.

Mary Jane Toulson is a weaver and will be showing rugs and wall-hangings. Colour is her thing, she mixes threads almost like using paint for her hard wearing floor rugs.

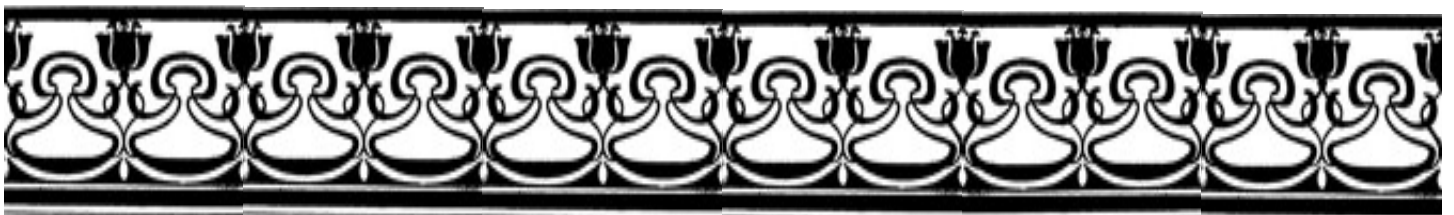
Rob Wheeler, our village potter, makes bowls, jugs and some ceramic pieces, based on classical Greek artifacts. He can be commissioned to make individual plates and plaques for special occasions.

Peter Rudderham is a metalworker, originally working on cars, more recently he has used his vivid imagination to produce metal sculptures (some large), probably for the garden, and some more delicate, of dragonflies and bees. There are some garden and entrance gates in Walsham, very individual that have been made by Peter.

Don't miss this show of high quality work.

Cash or Cheques only please!

Mary Jane Toulson





M A Heating Services



- * Oil, Gas and LPG boiler servicing, replacements and repairs
- * Repairs to central heating system faults i.e. pumps, programmers and cylinders
- * Servicing and repairs to Rayburn, Aga Stanley and Esse
- * Landlord's Certificates

Telephone: 01379 783427

Wickham Gate, High Street, Gislegham, Suffolk, IP23 8JD

The Old Tea Room Veterinary Surgery

For a professional caring service

Tel: 01359 241761

Station Road, Elmswell, Bury St Edmunds, IP30 9HA



A member of
Stowe Veterinary Group
www.stovevets.co.uk



WALSHAM LE WILLOWS PARISH COUNCIL MINUTES

of the meeting held on Wednesday 11th October 2023 commencing at 7.00 p.m. in the Memorial Hall.

[Pending formal approval, these minutes have been informally approved. Any further corrections will be proposed & minuted at the next meeting]

PRESENT: Cllrs. Bartholomew, Belson, Brookes, Mecrow, Tuck, Roberts, Winch.

ALSO PRESENT: District Councilor R Winch; Apologies from County Councilor Fleming

1. OPENING - including Statement, if any
2. APOLOGIES
 - a) None received
3. DECLARATIONS of Pecuniary & Non-Pecuniary Interests
 - a) To receive declarations of pecuniary, local non-pecuniary interest(s) incl. personal interests in items on the agenda and to include declarations of any gifts of hospitality – none received.
 - b) To receive declarations of lobbying for planning matters on the agenda – none received.
 - c) To receive requests for dispensations – none required.
4. MINUTES - To Receive and consider the minutes of the following meetings (as previously circulated)
 - Minutes of the meeting of 6th September 2023 were approved and signed as a true and accurate record.
 - Review of actions assigned to councillors from last meeting – all had been completed.
5. REPORTS FOR INFORMATION & QUESTIONS - to receive written reports & put questions:
 - a) District Councillor Winch – there were no questions on Cllr Winches' report. Cllr Mecrow did note the excellent census data and asked the Clerk to link to this on the village website.
 - b) County Councillor Fleming
 - Cllr Mecrow noted the considerable hedgerow growth (including brambles) this year, which now means there are no places that allow of pedestrians to easily step off the road when necessary. In particular, there are two oak trees that are encroaching at one of the worst corners. As a result, there are concerns about pedestrian safety. Cllr Mecrow will make enquiries about adjacent landowners to see if they may be able to assist. Details to be passed to Clerk.
6. PUBLIC FORUM - To receive questions and matters of concern from members of the public in attendance with regard to items on the agenda and Walsham le

Willows in general

Three members of the public present who raised the proposal for Flower Power project (agenda item 13f). representative of Gardens Weekend Committee also present and in support of this project. Parish Councillors warmly and unanimously welcomed the proposal and had no objections to the use of the closed churchyard wall for this purpose.

7. PLANNING MATTERS

a) Matters relating to DC/22/2190/HYB Proposal Hybrid planning Location Land At Shepherds Grove Bury Road Stanton Suffolk (Jaynic and Equation proposal.

b) Matters relating to DC/23/1154/OUT Proposal to West Suffolk Planning Authority for Outline Planning Application (means of access to be considered) for demolition of existing buildings and structures to provide new employment floorspace (Classes E(g)(iii), B2 and B8) including vehicular access with all other matters reserved Location Shepherds Grove Industrial Estate East Sumner Road Hepworth Suffolk Applicant, Shepherds Grove Investment LLP

- No matters were raised about either of these two applications at this time but Parish Councillors wished to note appreciation of the effort of County Councillor Fleming in pursuing issues of concern on behalf of Walsham le Willows and surrounding parishes. The Clerk was asked to email Cllr Fleming to ask about progress on reports of the weak bridge in Stowlangtoft and the bridge on The Causeway in Walsham le Willows.
- Cllr Winch suggested a mailing to those who asked to be kept up to date. Clerk advised that only one or two had sent in details.

c) APPLICATION FOR WORKS TO TREE(S) IN A CONSERVATION AREA - DC/23/04483 Proposal: Application for works to a tree in a Conservation Area - Fell 1No Walnut tree (T1 in Arboricultural Report)) to ground level and treat stump to inhibit re-growth due to clay shrinkage and subsidence damage. Location: The Elms, Badwell Road, Walsham Le Willows, Bury St Edmunds Suffolk IP31 3BT **The Parish Council Made No Comment**

d) APPLICATION FOR PLANNING PERMISSION - DC/23/04574 Proposal: Full Planning Application - Erection of replacement shed. Location: Walsham Le Willows Memorial Village Hall, The Street, Walsham Le Willows, Bury St Edmunds Suffolk IP31 3AA **The Parish Council Made No Comment**

e) APPLICATION FOR PLANNING PERMISSION - DC/23/04295 Proposal: Planning application - Change of use from agricultural workshop/machinery store to commercial kitchen; including associated adjacent parking bays. (Retention of) Location: Home Farm, West Street, Walsham Le Willows, Bury St Edmunds Suffolk IP31 3AP **The Parish Council Made No Comment**

8. PLANNING OUTCOMES (decided by Mid Suffolk District Council, Planning Authority) for noting only

a) APPLICATION FOR PRIOR APPROVAL - AGRICULTURAL TO DWELLING - DC/23/02895 Proposal: Application to determine if Prior Approval is required for a proposed Change of Use of Agricultural Buildings to Dwellinghouses (C3) and for building operations reasonably necessary for conversion. Town and Country Planning (General Permitted Development) (England) Order 2015 as

amended Schedule 2, Part 3, Class Q - Conversion into 4No dwellinghouses.
Location: Home Farm, West Street, Walsham Le Willows, IP31 3AP **MSDC**
Approved This Application

- b) **APPLICATION FOR PLANNING PERMISSION - DC/23/03724 Proposal: Full Planning Application - Erection of commercial workshop. Location: Ashwell Construction Ltd, Summer Road, Walsham Le Willows, IP31 3AJ MSDC Approved This Application**

9. **NEIGHBOURHOOD PLAN** – to receive any comments from Parish Council representatives (Cllrs. Belson & Mecrow) and consider any matters arising
It was agreed that when the referendum is announced, the Clerk should arrange for updated publicity via all usual channels.

10. **PLAY AREA** – consider any matters arising.

- a) Cllr Roberts advised that he hopes to install the new bins next week after which the Clerk can ask MSDC to start emptying them.
b) Cllr Winch asked for authorisation for the purchase of 4 bags of topsoil in readiness for working party on November 4th from 10:00 until 11:30. This was unanimously agreed. Clerk was asked to email previous participants to invite them to attend.

11. **FINANCE & AUDIT**

- a) Bank reconciliation for period ending 30th September 2023 was unanimously approved and signed.
b) Accounts awaiting payment summary and invoices for payment were unanimously approved and signed. (Appendix 1).
c) Actions required as arising from external audit report 2022/23 (circulated 28/09/2023) were considered and it was decided that none were needed. The Clerk will report to next meeting on the issue raised about explanation of variances which could not be addressed because Clerk was away on holiday.
d) Re-appointment of SALC as internal auditor for 2023/24 was unanimously approved.
e) Clerk proposes that application for a ‘Pride in Your Place’ grant is submitted for the new PC shed.

12. **PARISH COUNCIL OBJECTIVES – 2023/24**

Updates

- a) Traffic calming, 20’s Plenty – Cllr Winch reported 31 online responses so far with paper responses to be added to these. The consultation is identifying areas about which people are concerned and also suggestions for traffic calming measures. The final responses will be collated for next meeting. If it were agreed that traffic calming or speed restrictions were supported in the community, the use of a professional consultant greatly increases likelihood of successful implementation by formulating options and then presenting a prototype plan to residents. Decision would have to be made on pushing forward independently or joining forces with other parishes. Seminar suggested that many low-cost solutions in multiple locations are usually more effective than fewer high cost solutions.
b) Footpaths and permissive paths – nothing to report. Sports Club crossing initiate needs to be formally adopted and it is assumed that the Sports Club are lobbying

hard for this. The Summer Road footpath proposal has been included as part of the Local Cycling and Walking Initiative. The Palmer Street footpath has also been included as part of a MSDC plan.

- c) Shepherd's Grove site applications – Clerk was asked to send out an update to people who had expressed an interest in being kept up to date with these developments and related concerns.

13. CLERK & COUNCILLOR REPORTS

- a) To consider and receive the updated action log for any matters of concern/note. – None. Agreed that Clerk should update as proposed.
- b) Cllr Winch proposed that a date and specification are set with CGM for stream clearance in September emphasising the removal of debris. Clerk reported waiting to hear back from CGM with date for clearance and pre-clearance site visit. Will try to arrange this on a day that Cllr Winch can attend.
- c) Cllr Winch proposed that the contractor should be asked to clear the Miller's Bridge end of the path and verge. Clerk clarified that this area has been cleared with the stream clearance for the past two years. Like everywhere growth this year has been exceptional. Added to this that end of the stream has very little verge that can be maintained with the regular verge grass cutting equipment.
- d) Council expressed unanimous support for proposal for the setting up of a repair shop group/organisation (for both men and women) in Walsham le Willows Council and awaits further discussions.
- e) The parish council has been contacted by local residents about the possibility of planting some trees on the grass area at Staple Close and is currently liaising with MSDC to see if this might be possible.
- f) Proposal from residents about Flower Power project with support of Gardens Weekend Committee. Dealt with under agenda item 6.
- g) Council unanimously agreed to proposal from John Dyer (horticultural show committee) proposing they undertake improvements to the soil depth and condition in the three flower beds surrounding the war memorial to include the purchase of some more plating in advance of this year's remembrance parade and service. The Parish Council expressed thanks to the Horticultural Show Committee for the proposal and asked the Clerk to enquire about any out-of-pocket expenses.
- h) Cllr Belson did the annual review of closed churchyard tree maintenance.
- Two largest lime trees on Causeway side have ivy growth and some bracket fungus.
 - Tree nearest to St Catherines completely hollow.
 - Ash tree on south side opposite The Priory beginning to show signs of die back.

No action to be taken on any of these immediately but all need to be kept under review.

- i) To consider and receive any other matters of concern/note for next agenda.
- Cllr Belson noted contact from PCC re new contractor for closed churchyard with queries about public liability. Clerk asked to forward contact details for

John Boulter to Cllr Belson who will respond and also to re-confirm with contractor that they have PLI.

- Cllr Brookes raised issue of ever larger potholes on Swan Path. Clerk to report to highways.
- Cllr Winch raised issue of hedge alongside houses fronting Finningham Road from Elmside Lee. Clerk to report to highways.

Next Meeting – 8th November 2023 7pm - Memorial Hall.

Meeting Closed at 20:54

APPENDIX 1

Payments for Authorisation October 2023

#	Payments OUT	Amount	Description
1	Kevin Boardley	22.79	Namesco - Renewal of domain name for 1 year reimbursement to Clerk
2	CAS	845.43	Annual insurance
3	WLW Community Council	35.00	Colour Observer cover
4	CGM	132.00	Grass cutting stream verges/play area
5	Compasspoint	720.00	Consultant fees Stage 5 neighbourhood plan
6	Babergh MidSuffolk District Council	117.00	Full planning application fee – reimbursed to Clerk
7	SALC	54.00	Payroll services
8	Memorial Village Hall	27.00	Hall hire PC meeting 06/09/2023
9	Suffolk Agri	299.00	New strimmer
10	Suffolk Agri	107.00	New battery for ride-on and oil
11	Compasspoint	350.00	Planning application advice DC/23/1154/OUT
12	SALC	72.00	Cllr Training (N Tuck)
13	PKF Littlejohn	504.00	External Audit
14	Old Town Trust	250.00	Play Area Annual Rent
15	Parish Council Employee	556.08	Wages
16	Unity Trust Bank DIRECT DEBIT	18.00	Quarterly bank service charges
#	Payments IN & Other Payments/Transfers	Amount	Description
1	Precept RECD	12,298	2 nd tranche 2023/24



TRADITIONALLY REARED FARM TURKEYS AVAILABLE FOR CHRISTMAS



Contact:-

John Farrow Priory Farm Rickingham Diss Norfolk
Telephone 01359-259221



**MCS ACREDITED WITH INSURANCE BACKED WARRANTY FOR YOUR
SOLAR PV & BATTERY STORAGE REQUIREMENTS**

NAPIT & FGAS REGISTERED ELECTRICIAN OFFERING THE FOLLOWING SERVICES:

- All Electrical including Certification
- EICR (Property Testing)
- Solar PV Panels
- Battery Storage
- Electric Heating
- Air Conditioning / Heat Pumps / Electric Heating



Professional & Reliable Service



Tel: 07377 153 954

Email: contact@lectec ltd.com

RESIDENTIAL - COMMERCIAL - INDUSTRIAL

WILDLIFE IN NOVEMBER

The weather has turned and there is a chill in the wind, and the wildlife that was in abundance seems to have disappeared, but there is lots going on that we do not see. Foxes that were born back in March-April are now starting to go further afield searching for new territories of their own. They have felt safe and protected since birth from the comfortable surroundings the Vixen provides and both parents feeding them to this point. Since Autumn the foxes will have been searching for pastures new to establish new territories, and finding partners, males will travel further driven by the urge to mate. In cities and urban areas it has been found that the foxes leave sooner than they do in the country, this could be due to higher fat reserves and the availability of food scraps. Due to the numbers of foxes being higher in the cities and urban areas a lot do not establish their own territories, do not travel far, and will become subordinates and help out a dominant pair instead.

There are many berries out this year bringing much needed colour of reds and oranges in our gardens and hedgerows and more importantly food for animals. A berry that is sometimes overlooked and not as pretty as the others is the Ivy berry. These berries are a high fat superfood for birds, and provide a food source for later in the year when other sources are scarce as they do not rot as fast as other berries. The best producers of the berries are the more mature Ivy's, so before you tidy them up too much spare a thought for the birds. Also these are great sources of nectar next year as it produces a later blossom for the Butterflies, Hoverflies and the Ivy Bees.

A little prickly mammal that would years ago by now have popped on their pyjamas only waking up periodically for a tasty morsel if the weather turned milder is the Hedgehog. Now with the seasons changing and becoming milder we are still seeing baby hedgehogs being born in these winter months. These babies will struggle to survive, either with the lack of food the mother can provide or when they reach independence at around 8 weeks of age they will struggle with finding food themselves and sharp unpredictable changes in the weather. There maybe Slugs and Snails around but these are not a favourite of hedgehogs, they prefer beetles, spiders and other invertebrates. At the moment this may be all they can find to keep going, unfortunately the Slugs and the Snails harbour the parasite Lungworm which will be deadly. I foster for the Suffolk Hedgehog Rescue and we see many babies and adults coming in with this parasite. If caught in time with medication it can be cured. If you find any young hedgehog about now put in a high sided box and call a hedgehog rescue, or if you are in the village call me on 07794709616. You can help adults by providing wet/dry dog or cat meaty food. Remember if you are making a bonfire this year to check underneath as the hedgehogs think these are great homes, or you can make it the same day, if you are unable to, light one side only to allow any animal to escape.

Angie Bennington





J W Amps Ltd



Offering service and repairs to all types and makes of garden machinery, ATV's, compact tractors etc.

Machinery bought and sold

Over 15 years experience – factory trained by Briggs & Stratton, Stihl, Westwood and Countax.

Collection and delivery service available.



Contact Simon

Mobile 07974 430366



E-mail: simonamps@btinternet.com

Stuart Walker



Decorating, Painting & Refurbishments

A locally based company offering an honest and reliable service.

Painting - Decorating— Refurbishments - Repairs.

All work considered indoors & out! Fully Insured & free quotations provided. Please contact Stuart on Tel: 07711 606 464 or Email: stuma1@hotmail.co.uk

THE HELLGATE CLUB

by the Common Ground Theatre Company
Walsham Memorial Village Hall
Thurs 12th October

In this riveting two act play, we were treated to a wonderful evening performance set in the Belle Epoque in Paris. The action began with the seamstress Clara Popelin (played by the excellent Bernadette Moran) receiving a visit from brothel-owner Celine de Pougy (the brilliant Susie Barrett) who owes her some rent. The two of them are then interrupted by Detective Inspector Telier (the formidable Julian Harries) and his sidekick Sergeant Aveline (played by the wonderful Ben Elder) who asks them if they know anything about various men who seem to have gone missing. Later we also meet Clara's sister Marie (also played by Susie Barrett) and Clara's listless son Paul (also played by Ben Elder). Over the course of the next two hours the tension rises as the bodies of the missing men are discovered by the police and the suspicion begins to fall closer and closer to home,

The action unfolded in both prose and songs, all written by the extraordinarily talented director Pat Whymark. Everything from the harmonisation in the singing, to the atmospheric staging, professional lighting, background music, and ever pervasive sense of both dread and humour, was all finely balanced and expertly executed, with many of the actors also playing instruments during the songs.

The horrifying conclusion took everyone by surprise. None of us guessed who had done it. And it provided a chilling moral too. After the performance I asked Pat Whymark if it was a true story. She said that it was based on a famous string of murders in Russia. I shivered. Just as well it was performed on Thursday 12th, and not Friday 13th.

Common Ground Theatre Company will be back with their next production, "Miss Mimple Meets the Ice Wolf" also written and scored by Pat Whymark, in only a few months time. How do they do it? To see venues and dates visit their website www.commongroundtc.co.uk.

John & Suzi

MORE OR LESS

<

∨

>

The numbers 1 to 5 should appear in each row and column.

4 > 2

The greater and less signs indicate the relative size of adjacent numbers.

∧

∧

∧

< < <

∨

< <

*Oil Fired Pressure Jet Boiler
Servicing & Plumbing*



**ANDY'S
OIL BOILER
SERVICES**

ANDY BACOS

 07775 751303

 andy.bacos@ntlworld.com

 Andy's Oil Boiler Services



J W Amps Ltd



**Offering service and repairs to all types and makes of
garden machinery, ATV's, compact tractors etc.**

Machinery bought and sold

**Over 15 years experience – factory trained by
Briggs & Stratton, Stihl, Westwood and Countax.**

Collection and delivery service available.



**Contact Simon
Mobile 07974 430366**



E-mail: simonamps@btinternet.com

GREEN DILEMMAS

‘Strawberry Raspberry Cherry’ or ‘Blue Razz Lemonade’?

Five million single-use vapes (or e-cigarettes) are being thrown away in the UK every week, a fourfold increase since 2022. This amounts to eight vapes a second. Inside each vape is a lithium-ion battery - one of the key raw materials for the transition to renewable energy. In fact the amount of lithium discarded annually is enough to create 5,000 electric car batteries.

Lithium-ion batteries used in e-cigarettes and vaping devices can overheat and explode causing fires. Disposable vapes are behind a dramatic rise in fires at recycling plants over the last year, raising the risk of a major blaze releasing toxic fumes and associated air pollution.

You have to go to a small electrical recycling centre to dispose of the vapes so it's not surprising that only 17% of people say they recycle single-use vapes, with 73% thrown away and 1% flushed down the toilet! This all means that local authorities are being burdened with the major operational and financial issues associated with managing one of the fastest growing and most dangerous waste streams in the UK.

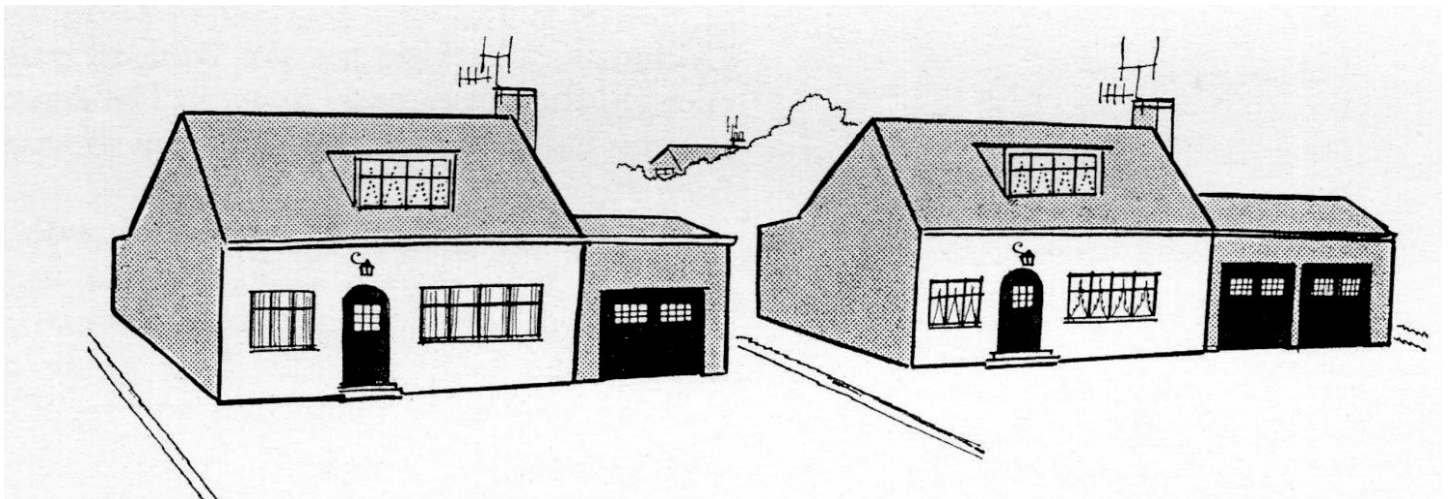
Vapes were originally introduced to help people reduce or quit smoking. However, it's pretty clear that we are allowing an industry to develop which is having a significant impact on the smoking habits of teenagers. There are increasing reports about the addiction and serious health implications for young smokers of e-cigarettes. ‘Strawberry Raspberry Cherry’ or ‘Blue Razz Lemonade’ - these are some of the more popular flavours that are available and it's clear who they are targeted at.

It is now often quoted that “single-use vapes are a strong contender for being the most environmentally wasteful, damaging and dangerous consumer product ever made”.

Britain is lagging behind the rest of the world in addressing the issue though the UK government is currently consulting on a possible ban. Germany, Australia and New Zealand have banned all flavoured e-cigarettes. Earlier this year, France also announced it is planning to ban all disposable e-cigarettes.

Once we have millions of people hooked on vaping it will be much harder to regulate. There seems to be very strong health and environmental reasons to stop this problem getting completely out of control and ban all single use vapes.

Richard Winch





Pawfect Moments

Dog Walking & Petcare

(Badwell Ash and surrounding villages)



I am available to walk your dog/dogs, provide doggy day care, pet sitting and home visits for feeding, medication and toileting.

I appreciate that all pets are different and have a variety of needs, therefore I always start each relationship with a free home visit. I am fully insured and have attended a Canine First Aid course.

I look forward to hearing from you.....

Caroline Morris 07843 248 411

cdv_11@hotmail.com

Graeme Green

Electrical Services Ltd

A local Electrician, qualified with 20
years experience.
Offering a friendly and reliable service.

Residential and Commercial.
Fully Insured.

Available for all of your jobs large
or small.

For a free quote call or email
Graeme.

Email: graemegreenelectrical@gmail.com
Call: 07950 335966



**Special cakes
for
special celebrations**

Jean Barker 01359 241135

www.amazingcakesbyjean.co.uk

TONY FISHER

PLUMBING & PROPERTY MAINTENANCE

24Hr Emergency Callout Burst, Leaks, Blockage, etc Bathroom/shower installation
Tanks/cylinders/radiators Tiling floors/ walls Painting & Decorating
General DIY jobs Garden maintenance

Tel: 01359 242556 Mobile 07758 327743

Reliable & friendly service

WALSHAM HISTORY GROUP

The Story of a Bevin Boy

At our September meeting Barbara McElroy gave a very personal account of what it meant to be a Bevin Boy. The history of how conscripts during WWII were used as miners to provide the coal that the country's industries relied on to keep up production and homes relied on for fuel.

As WWII dragged on the country was becoming short of miners because so many had enlisted. Ernest Bevin was the Minister of Works and Labour whose job it was to address this very urgent need. His solution was to select indiscriminately by ballot from all those due for conscription. Barbara McElroy's father, Les Raymond, turned 18 in 1944. He had spent years as an army cadet and had expected to be called up to join the army. He was a strong, medically fit young boy from a rural background. Instead, his call up papers told him to report to Cresswell Colliery

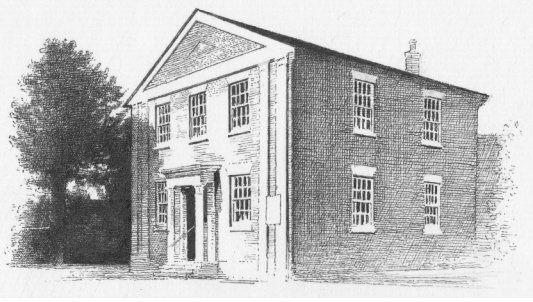
in Derbyshire for his initial training. He lodged an appeal of course but like most who did so, had his appeal overturned. To refuse would have meant 3 months in prison, and to refuse again would have meant indefinite imprisonment. In total, about 21,800 Bevin Boys were conscripted by ballot.

Mining then was a perilous existence. The mines were privately owned and poorly maintained. They were dangerous places and the conditions were atrocious. About $\frac{1}{4}$ of all miners were killed or injured at work. Sometime after Raymond's stay at Cresswell Colliery there was a rockfall that killed 60 miners. No effort was made to dig them out and the young boys went into the mines every day, knowing that the same fate could await them.

Training for the new recruits included lessons in mine safety and physical exercises such as pit prop shifting simply to build up their strength. After 4 weeks training, they were sent down the mines where it was hot, where rock falls could happen at any time, where you could be decapitated by the equipment, where it was infested with rats and you ran the risk of contracting Weil's disease which would kill you and where the dust got into your skin and into your lungs. The work was physically exhausting. It was a hard existence, no wonder that the original miners had left to join the army.

To add to the misery of most was the complete lack of knowledge about their plight among the general population. At a time when military courage was considered exemplary and a uniform could help you queue jump and entitle you to rations that others might not get, the fate of these young men in civilian clothes was blighted. They were treated like conscientious objectors, handed white feathers, despised for their apparent lack of courage. To add to this injustice, at the end of the war in 1946 they had to stay in the mines, no demobbing for them, the country still needed miners. They were not allowed to leave until 1948 at which point, they found themselves out of work. Employers were required to re-employ men who had joined up during the war, but no such safety net existed for the Bevin Boys. This total lack of recognition for their contribution to the war effort continued right up to 2008 when they were finally granted recognition and a tin badge. They were added to the war memorial at the National Arboretum in 2013, nearly 70 years after the end of WW11. Not surprisingly, given the lack of interest or recognition of their work, no complete records exist of who actually were the Bevin Boys. The coal industry was nationalised in 1947, the documents of the private mining companies were lost or destroyed. In many cases, the names of those who died would have been remembered only by their families and friends. They deserved so much more.

Alison Martin



Walsham Congregational Church

The Street, Walsham-le-Willows, Suffolk. IP31 3AZ

Church Secretary (John Landymore)

01359 - 258986

We are open for worship each Sunday at 11.00 & 6.30 so why not come along? Please be assured of a warm welcome; it would be lovely to see you.

Born Twice

During his very influential ministry, the eighteenth century itinerant Methodist evangelist George Whitfield preached many times on the text ***“ye must be born again”*** (John 3:7), in fact some believe he preached this message as many as one thousand times. A man once asked him, “Why do you always preach that ye must be born again?” Whitfield’s simple reply was, “Because the Bible says that ye must be born again”. George Whitfield realized how essential the experience of the new birth is in Salvation and how necessary in his preaching: he wanted everyone else to realise that vital truth as well.

This is the same message that a true Christian, or genuine Christian church, still unashamedly proclaims today and in every generation. Be in no doubt, the new birth is an imperative; it is something that cannot be done without, there is absolutely nothing that can take its place. The new birth is not something that is optional; it is not something that one can take or leave as they wish and then hope to enter Heaven some other way. In fact, the Bible makes it perfectly clear, that if a person is not born again they will certainly never enter into Heaven. The Lord Jesus Christ quite plainly said’ ***“Verily, verily I say unto thee, except a man be born again, he cannot see the kingdom of God”*** (John 3:3): this message could not be clearer. It will be possible to get to Heaven without baptism, ceremonies, religious ritual, money, learning, and status but it will be completely impossible without being born again.

It is important to note that the Lord spoke the words of John 3:3 to Nicodemus who was not known as an immoral man or open sinner. Nicodemus was one of the most religious people living at that time as he was a leader of the Jewish religion. This teaches us that everyone needs to be born again, regardless of their background, lifestyle, religious observance of good works.

The Bible does not only talk about the second birth, it also solemnly speaks of the second death in Revelation 20:14-15 where the unrepentant and unbelieving, in body and soul, receive their eternal reward. J C Ryle, the former Bishop of Liverpool put it like this, “If you have never been born again, the time will come that you will wish you had never been born at all”. However, another once said, “If you are born once you will die twice, but if you are born twice, you will only die once”. Almighty God is merciful and longsuffering and leaves us with no doubt that there is a way, but only one way to escape, which is by repentance of sin and faith in the Lord Jesus Christ as the only Saviour of sinners. Today Christ still clearly says, ***“ye must be born again”*** (John 3:7)

**For the wages of sin is death; but the gift of God is eternal life
through Jesus Christ our Lord.**

(Romans 6:23)

SPORTS CLUB REPORT

Football

The First Team had an excellent result in the FA Vase beating Mulbarton Wanderers 3 -1 away. Ethan Garcia, Sam Nunn and Scott Chaplin were our goal-scorers. Having been in good form during September we lost 4 -3 to Lowestoft in the Suffolk Premier Cup. Ethan Garcia and a brace from Charlie Iglesias were our goalscorers. In the league we thrashed Kirkley and Pakefield 5-1 at home. Ethan Garcia scored his first hat trick for the club while Charlie Norman and Scott Chaplin both got on the scoresheet. We lost our next league game 2-0 away to Woodbridge Town before going to high flying Downham Town and winning 2-0. Reece Lanchester and Scott Chaplin our goal-scorers.

The under 18s have won 2 of their last three league games and currently lie in 11th place in the league table.

The Under 18s unfortunately haven't won a game in October but their performances have been decent despite the losses.

The Vets beat Occold 7-4 away in the first round of the League Cup.

Football fixtures for November

11th First team v Dereham Town 3pm

25th First Team v Long Melford 3pm

18th Under 23s v Framlingham Town 3pm

16th Under 18s v Ely City 7.45 pm

26th Veterans v Hoxne 1.30pm

Bowls.

Congratulations to Geoff Pattinson, Nick Foulger and Pete Dixon for winning the Annual St Botolph's Triples competition back in September.

Snooker and Billiards

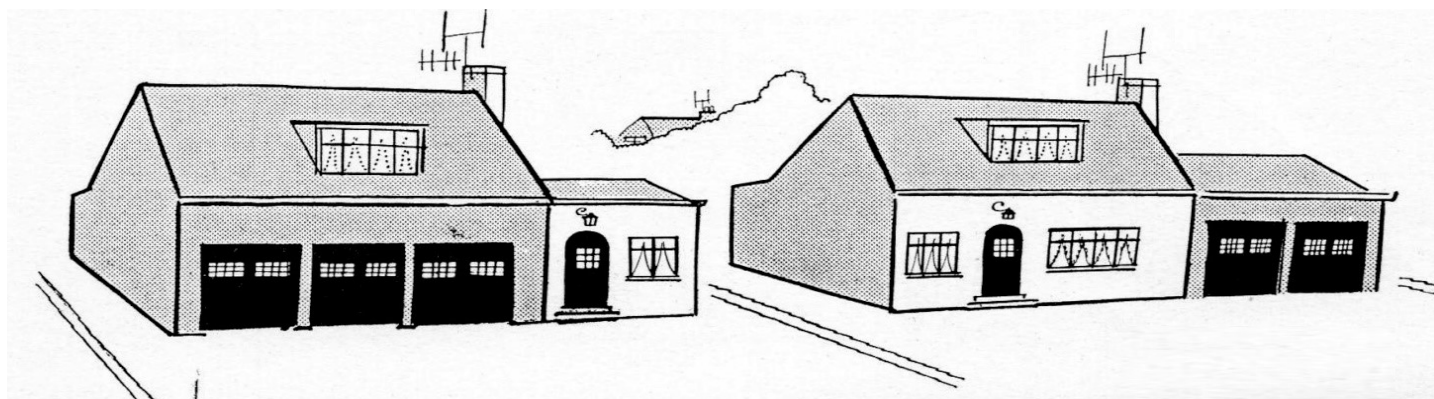
Congratulations to Nick Foulger for winning The Singles Cup in the Swaffham Veterans Billiards League. Nick has had an excellent season as he also won the Bury And District Billiards League Knockout Cup.

Well done on your tremendous achievement.

New Years eve

On New Years Eve we are open from 4pm and we are making the evening a family friendly party evening including live music from 5pm to 8pm from Jo Manning. Further details next month.

Gordon Ross



GROUNDWORK & PLANT HIRE

- Mini Digger & Driver for Hire
- Block Paving & Patios
- Extension Bases
- Driveways & Pathways
- Drainage Work
- Footings & Oversites
- Gardens & Site Clearance

C.S. CONTRACTORS

01284 724048 / 07720843577

108 Horringer Road Bury St Edmunds
IP33 2DP

www.cs-contractors.co.uk



Elite Fencing and Landscaping

JUST 10 MINUTES AWAY FROM YOU.
FENCING, GATES, DECKING, PATIOS,
PERGOLAS, PATHS, BASES,
TURFING, DEMOLITION,
REGRAVELING DRIVEWAYS,
GARDEN CLEARANCE,
GARDEN PROJECTS & RESTORATION,
REPAIRS, ODD JOBS & MORE!

ALL TYPES OF OUTDOOR WORK
UNDERTAKEN - SMALL OR LARGE
FOR FREE ESTIMATES CALL TREVOR
ON 01359 221128 OR 07761651567

EMAIL

TREVOR@ELITE-FENCING.CO.UK
WEB: WWW.ELITE-FENCING.CO.UK

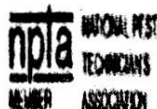
N & S PEST CONTROL — SERVICES —

RATS! MICE! RABBITS! MOLES! BIRDS! WASPS!
FLIES! ANTS! SQUIRRELS! & MINK!

All effectively controlled by

Norfolk & Suffolk Pest Control
Chris Earth, 2 Orchard Lane,
Pakenham, Nr. Bury St. Edmunds,
Suffolk. IP31 2LQ

Phone: 01359 232538 Mobile: 07885 745446



All forms of landscaping and garden
maintenance undertaken

- Patios & paving
- Grass cutting
- Fencing
- Garden edging & retainers
- Decking
- Shed bases

For a free quote contact

07931089125

contact.jblandscapes@gmail.com

SPOT THE DIFFERENCE



There are ten differences between these two pictures, see if you can find them all before the man on the right gets strangled.

Sweep 'n' Clean

HETAS Registered
Wood Burning Stove Installers
Qualified Chimney Sweeps
Bird Cows Fitted
Gutter Clearing
Driveway Power Washing
Fully Insured
FREE Site Survey



Email: contactus@sweepnclean.co.uk
Web: www.sweepnclean.co.uk
Office: 01359 232955

BROWN'S



SERVICE

All Types of
Tree Surgery
Undertaken

Thinning Reductions
Deadwooding Felling
Storm Damage

All types of hedges, shrubs
and fruit trees pruned.

Seasoned logs and
woodchip mulch delivered

For a Free Quote ring

01359 259149

Mobile 07881 816761

Chainsaw Certificate
City & Guilds Qualified
Public Liability Insurance

*Oil Fired Pressure Jet Boiler
Servicing & Plumbing*



ANDY'S
OIL BOILER
SERVICES

ANDY BACOS



07775 751303



andy.bacos@ntlworld.com



Andy's Oil Boiler Services



THE BALLAD OF ABDUL ROWE

I tell of a teacher, Abdul Rowe,
Who taught - not so many years ago
In Northwood Hills, at a grammar school,
Where he changed the life of a callow fool.

Thank you, Abdul, thank you!
You looked a proper tyro -
We thought you weird
With your big black beard
And a multi-purpose biro.

It was back in nineteen sixty-three
And I was the king of form 4C,
A vipers tongue and last in the class,
Lord, how the prefects whacked my arse!

Thank you, Abdul, thank you!
We may have been unruly,
And pinned a note
On the back of your coat,
I apologise, Abdul, truly.

In those days I was a mouthy lout,
With precious little to mouth about,
I kept the bullies off my back
By feeding masters cheek and flack.

Thank you, Abdul, thank you!
Forgive that little tartar
Who brought you fame,
A sly nickname,
And turned you into a martyr.

Now Abdul Rowe was a substitute
On English Lit', a new recruit
A softy, wet behind the ears -
(I knew we'd soon have him in tears).

Thank you, Abdul thank you!
You didn't rant or rave, sir.
You didn't shout
Or bang about
To force us to behave sir.

He dressed far worse than any boy,
His suits were shabby corduroy,
He couldn't discipline a fly
(And he knew it, too, so he didn't try).

Thank you, Abdul thank you!
We howled like drunk carousers,
(Yes, it was me
And Johnny P
Who superglued your trousers.)

Through all riot that poor saint
Would smile and never make complaint,
Until one day, out loud, he made
Us read The Charge of the Light Brigade.

Thank you, Abdul thank you!
You read like a transformed giant!
He struck 4C's
Artillery
And the class became compliant.

He knew he'd hoked us then, by God!
And sure enough he cast a rod
Across that lake of clueless proles,
And reeled in a few stray souls.

Thank you, Abdul thank you!
You won't recall those scholars.
You never knew -
But it was you
Who made me a million dollars!

Thank you, Abdul thank you!
By God, I wish you well, sir,
As you will note
From what I've wrote,
I've halfway learned to spell, sir!

Felix Dennis





J W Amps Ltd



Offering service and repairs to all types and makes of garden machinery, ATV's, compact tractors etc.

Machinery bought and sold

Over 15 years experience – factory trained by Briggs & Stratton, Stihl, Westwood and Countax.

Collection and delivery service available.



Contact Simon

Mobile 07974 430366



E-mail: simonamps@btinternet.com

Stuart Walker



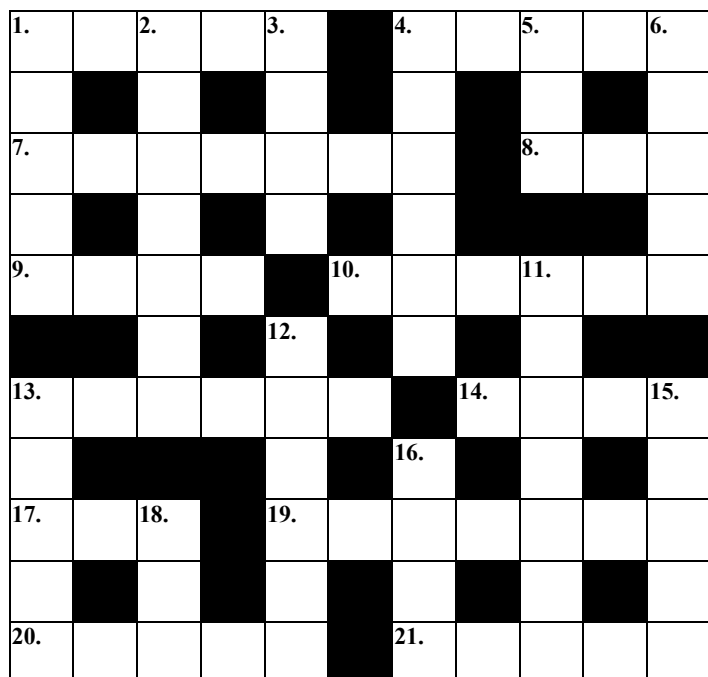
Decorating, Painting & Refurbishments

A locally based company offering an honest and reliable service.

Painting - Decorating— Refurbishments - Repairs.

All work considered indoors & out! Fully Insured & free quotations provided. Please contact Stuart on Tel: 07711 606 464 or Email: stumal@hotmail.co.uk

WALSHAM OBSERVER CROSSWORD



ACROSS

1. Look happy for a small distance. (5)
4. Was she an earnest governess? (5)
7. Is here as a gift. (7)
8. Unhinged mother comes back. (3)
9. Wander around the capital possibly. (4)
10. Join the husband and wife. (6)

13. Maybe one at a time for the student worker. (6)
14. Have a ball briefly on the coast. (4)
17. Old financial organisation given the bird. (3)
19. Satisfied with the substance. (7)
20. The tallest fragment of London. (5)
21. A teacher might have made you trot. (5)

DOWN

1. Great but less quiet than the meal. (5)
2. Roughly not out and precise. (7)
3. We're arranging to find a jug. (4)
4. Design a portal for the guard. (6)
5. Have belief in the prismatic compass. (3)
6. Such a nuisance in mid-Germany. (5)
11. Sounds like a warning of substandard camping gear. (7)
12. Found to be carted around. (6)
13. Thoughts about the construction of a side. (5)
15. Posh mother discovered in the material store. (5)
16. Sounds like a single condemnation. (4)
18. This country had unusual sanitary arrangements initially. (3)

NOVEMBER CHURCH SERVICES

5th November

9.30am

11.00am

12th November

8.00am

10.20am

10.50am

10.50am

10.50am

10.50am

19th November

9.30am

11.00am

26th November

8.00am

3.00pm

3rd December

11.00am

11.00am

4th Sunday before Advent

Morning Prayer

Family Communion

Remembrance Sunday

Holy Communion

Remembrance

Remembrance

Remembrance

Remembrance

Remembrance

2nd Sunday before Advent

Family Communion

Songs of Praise

Christ the King

Holy Communion

Evensong

Advent Sunday

Holy Communion

Morning Prayer

Finningham

Walsham

Walsham

Badwell Ash

Finningham

Walsham

Wattisfield

Westhorpe

Badwell Ash

Walsham

Walsham

Westhorpe

Walsham

Finningham

REGULAR

MONDAY

Community Lunch Village Hall
2nd Monday 12:45pm
Walking Football Sports Club
8:00pm till 9:00pm

TUESDAY

Walking Netball Sports Club
10:00am till 11:00am
Pilates Class Village Hall
1:30pm till 2:30pm
Walking Football Sports Club
2:00pm till 3:00pm

WEDNESDAY

Pilates Classes Village Hall
9:15am till 10:15am
Yoga Sports Club
10:00am till 11:30am
Positive Steps Sports Club
11:30am till 12:30pm
Wednesday Wanders Sports Club
11:30am till 12:30pm
Carpet Bowls Sports Club
2:30pm till 4:00pm
WI Meeting Priory Room
7:45pm Second Wed of the Month

EVENTS

THURSDAY

Coffee Shop Village Hall
10:30am till Noon
Post Office Van Village Hall
11:00am till Noon
Yoga Sports Club
1:15 pm till 2:15pm
Walking Football Sports Club
2:00pm till 3:00pm
Pétanque Sports Club
2.00pm till Bouled Out
Walking Netball Sports Club
6:00pm till 7:00pm
Community Yoga Priory Room
7:15 pm till 9:15pm

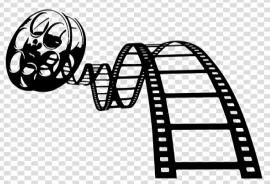
FRIDAY

C & A Coffee Shop Village Hall
9.00am till 11.00am
Cardio Tennis Sports Club
12noon till 1:00pm

SATURDAY

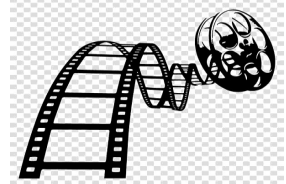
Pop-up Shop Village Hall
Last Saturday in the month

SUNDAY



STANTON VILLAGE CINEMA

Friday 10th November at 7:30pm



THE FABELMANS (12A)

A Steven Spielberg film

Growing up in post-World War II era Arizona, young Sammy Fabelman aspires to become a filmmaker as he reaches adolescence, but soon discovers a shattering family secret and explores how the power of films can help him see the truth.

Tickets on the door, adults £5.00—under 17's: £3.00

Tea/coffee and refreshments,

ALL THE ANSWERS

Page Bottom Quiz

1. Trees, 2. India & Myanmar, 3. 1789, 4. France, 5. Nimbus, 6. Typhoon, 7. The wolf, 8. Egypt, 9. Casablanca, 10. Lisa Marie, 11. Blue, 12. The Holy Grail, 13. Canterbury, 14. Steel, 15. Nevada, 16. Prosthetics, 17. Dutch, 18. Paper, 19. Nine, 20. Anemone, 21. Venice, 22. Batman and Robin, 23. Portuguese, 24. Nucleus, 25. Green, 26. Mulberry, 27. 120, 28. Minnehaha, 29. West Side Story, 30. France, 31. Forty, 32. Sony, 33. Boy Scouts, 34. The Netherlands, 35. Macau, 36. Chess, 37. The peacemaker, 38. Sapphire, 39. Libra, 40. Carbon monoxide, 41. Caracas, 42. Louis XVI, 43. Hyde Park, 44. Piccolo, 45. Mickey Mouse, 46. Mascagni, 47. Tree, 48. Model T Ford, 49. Nitrogen, 50. Ireland

Sudoku

1	8	3	6	7	2	4	9	5
6	5	4	1	9	3	2	8	7
9	2	7	4	5	8	1	3	6
5	6	8	7	4	1	9	2	3
7	3	2	9	8	5	6	1	4
4	9	1	3	2	6	7	5	8
2	1	6	8	3	4	5	7	9
8	4	9	5	1	7	3	6	2
3	7	5	2	6	9	8	4	1

Crossword

S	M	I	L	E		P	R	I	S	M
U		N		W		A		S		I
P	R	E	S	E	N	T		M	A	D
E		X		R		R				G
R	O	A	M		C	O	U	P	L	E
		C		T		L		O		
I	N	T	E	R	N		P	R	O	M
D				A		U		T		A
E	M	U		C	O	N	T	E	N	T
A		S		E		I		N		E
S	H	A	R	D		T	U	T	O	R

More or Less

2	5	3	4	1
1	3	4	2	5
4	2	1	5	3
5	1	2	3	4
3	4	5	1	2

Spot the Difference



Searching for Words

Aero	Are	Arm	Armed
Dear	Dee	Deem	Deer
Doe	Doer	Ear	Era
Fear	Fed	Fedora	Fee
Feed	Foam	Foamed	Foe
For	Fore	Forearm	Mar
Mare	Meer	Mere	Oar
Ode	Ore	Ram	Rare
Ream	Reamed	Rear	Red
Redo	Reed	Roamed	Roar
Roared	Rod	Rode	Roe

Forearmed (45)

USEFUL TELEPHONE NUMBERS

Community Council Secretary
David Murray **01359-258646**

Police
Suffolk Police **01473-613500**
Stowmarket **01473-383400**

Neighbourhood Watch

Anglian Water
Emergencies (24hr) **08457-145145**
Accounts **0800-919155**

Eastern Electricity **0800-7838838**

British Telecom
Customer Service **150**
Line Faults **151**

Surgeries
Ixworth **01359-230252**
Stanton **01359-251192**
Botesdale **01379-898295**
Woolpit **01359-240298**

Parish Council Chair
Richard Belson **01359-258868**
richardbelson@
btinternet.com
Parish Council Clerk
Kevin Boardley **parishclerk@**
walsham-le-
willows.org

District Councillor
Richard Winch **07931709486**

County Councillor
Mrs Jessica Flemming **01449-711065**

Suffolk County Council **03456-066067**

Member of Parliament
Jo Churchill **0207-2198487**

VILLAGE ORGANISATION CONTACTS

Allotments Group
Mel Wasley / Debbie Licata
walshamallotments@gmail.com

History Group
Frances Jenner **01359-259242**
frances.jenner@hotmail.com

Horticultural Show
Debbie Licata **01359 259686**
debbiewatson2916@gmail.com

Sports Club
Mike Powles **07379089890**
mike.powles@btconnect.com

Walsham Wild Wood
Lorna MacKinnon **01359 259140**
mackinnonlorna@gmail.com

Women's Institute
Pippa Baxter **01449781757**
pippabaxter2@gmail.com

Community Yoga
Julia Dunncliffe **07980 476 140**
dunncliffej@hotmail.com.

A decorative border surrounds the text, consisting of a repeating pattern of a white coffee cup on a saucer with two cookies. The border is 15 cups high on each side and 15 cups wide at the top and bottom.

WALSHAM LE WILLOWS VILLAGE HALL

The Community Council committee
welcome you to the

MVH Coffee Shop
In the Garden and the Hall
Open under government guidelines for
village halls and COVID 19

Open every Thursday

From a time of 10.30am to 12.30pm
The Post Office van is there
From 11:00am till 12:00pm

**Come and enjoy a chat and
A cuppa and a bite
Just for 'a couple of quid.'**