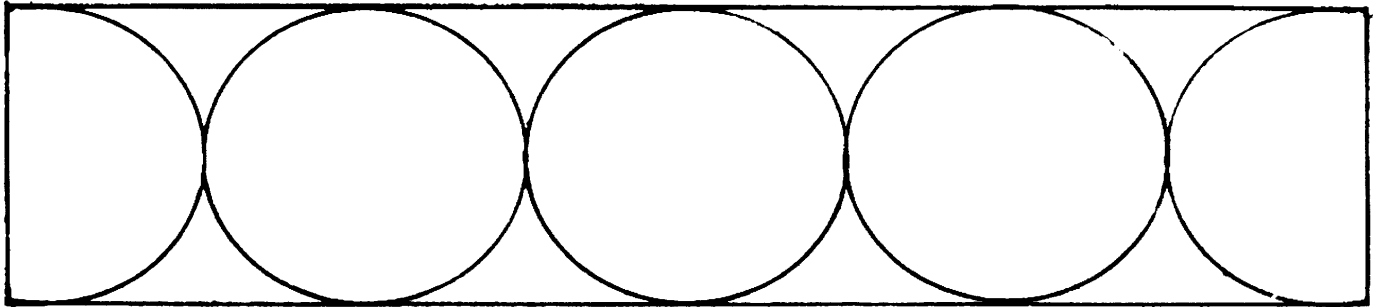
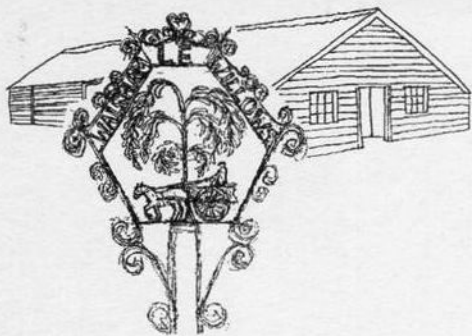


WALSHAM OBSERVER



SEPTEMBER 2023



Walsham-le-Willows

Memorial Village Hall

Hire Charges for 2023

All Day £135
Hourly £13.50

For Bookings and Enquiries
Contact Number 01359 259698
(answerphone available)
or email
sarah@octopusadmin.co.uk



Automated External DEFfibrillator (AED)

Located in the refurbished red telephone kiosk outside the Memorial Hall this AED has been registered with the East of England Ambulance Service and can be accessed via a digital keypad. The access code can be obtained by simply dialling 999 and asking the Ambulance Service. For reference purposes the location postcode is IP31 3AA.



THE WALSHAM OBSERVER

SEPTEMBER 2023

No 654

Published and distributed by the Walsham Community Council.

EDITOR Mr I R Toulson
01359-259646 iandmj@outlook.com

PRINTED by Gipping Press of Needham Market
Tel: 01449 721599 email: enquiries@gippingpress.co.uk
& **DISTRIBUTED** BY Volunteers

ITEMS FOR PUBLICATION

These should be dropped by **FRIDAY 22 SEPTEMBER** into the box provided in Rolfes or emailed to the above address.

Advertisements should reach the
Advertising Manager by **MONDAY 18 SEPTEMBER**

ADVERTISING MANAGER Cheryl Bartholomew
01359-258349 walshamobserveradverts@gmail.com

The Community Council takes no responsibility for the accuracy or otherwise of advertisements published in the Walsham Observer.

ADVERTISEMENT RATES

Quarter-page £60 per year £15 per month

Half-page £100 per year £20 per month

WALSHAM-LE-WILLOWS COMMUNITY COUNCIL **EXECUTIVE COMMITTEE**

CHAIR Trevor Roberts
01359-251144 acorn-house@hotmail.co.uk

SECRETARY David Murray
01359-258646 dwm599@googlemail.com

TREASURER Ian Bartholomew
01359-258349 IBarth2@aol.com

www.walsham-le-willocks.org

Contact telephone number: 01359 258698
(answerphone available)

Contact email: sarah@octopusadmin.co.uk

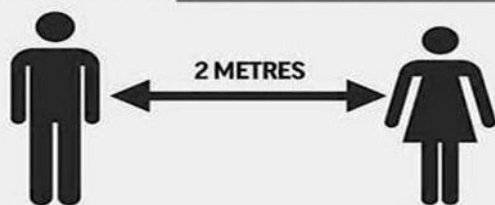
CONTENTS

Editorial	2	Parish Council Minutes	19
Village Hall Update	3	Philip Merry	25
Walsham Picturehouse	5	September Church Services	25
Remembering Maggie	5	Green Dilemmas	27
Women's Institute	7	Wildlife in September	29
Royal British Legion	7	Autumn Haikus III	29
Why Not Get Involved?	9	Congregational Church	30
Autumn Haikus I	9	Walsham Remembered	31
Horticultural Show	11	Pilates	33
Autumn Haikus II	11	On Giving Up Cricket	35
Walsham History Group	13	Searching for Words	35
Diary of Events	15	Sports Club Report	37
More or Less	18	Spot the Difference	39
Community Lunch	18	Observer Crossword	42



WHEN WALKING IN THE VILLAGE

**YOU NEED TO STAY 2 METRES
APART TO SAVE LIVES NOW**



Please take the 2 meter distancing rules seriously. This protects everyone. It is a simple and very much appreciated courtesy and no one will take offence.

If you pass people with children, or elderly people who may not be as agile, please give some thought to how much easier it may be for you to cross the road to maintain a social distance of at least 2 metres from them.

EDITORIAL

If film is 'your thing' then this month will be a treat for you. The **History Group** is showing **Akenfield on Wednesday 20th** in the Village Hall, where earlier in the month the **Community Council** is showing 'A Good Year' on **Friday 22nd**, again in the Village Hall, and to entice you to come there is a meal thrown in, For details see **pages 5 and 17**. Stanton's monthly screening is **Hallelujah on Friday 8th**. See page 41.

The **W.I.** are holding two meetings this, the first being their regular monthly meeting on Wednesday meeting on the **Wednesday 12th** with a talk on Local Wildlife. The second is the **following Saturday**, and is chance for non-members to find out what Walsham W. I. 'get up to'.

It does seem some time since there was a Car Boot in the village, or do I just not read the magazine closely enough. However the Community Council are holding a **Car Boot and Table Top Sale on Saturday 30th** at the Village Hall. See details on page 3. So here's a chance to try and have that clearance which have been meaning to have for some time.

If you missed the Trailer Gig at the **Sports Club**, you might just be able to make up for it when they hold their next musical evening when **Flashdance** will be providing the music for you to go 'wild' to! (Oh those carefree days thirty years ago!!) The event is on **Saturday 2nd** and further details appear on page 37. Do hope that your copy of the Observer in time.

As you will see at the bottom of the page, the **Historic Churches Ride** takes place on **Saturday 9th**. If you have never taken part, and have got a bike, have a go this year, it's good for your health, good for the church, and an excellent way to get to meet people in the area and explore the insides of some wonderful buildings.

It has been a sad week for departures this month, firstly the departure of Philip Merry after just six years, in which time he has made a significant contribution to village life. I suspect we might see him again before too long as he has only departed to Beccles.

The other, very sad, departure was that of Maggie Barber who made such a vital contribution to the village in so many ways. There will be a chance to get together and share our memories of her on Wednesday 13th. There are further details on page 5.



SUFFOLK HISTORIC CHURCHES TRUST CYCLE RIDE

Sat 9th September 9:00am till 5:00pm

Forms available now from St Mary's

VILLAGE HALL UPDATE

Foodbank

It was a sad day when the Walsham Le Willows Food Bank run from the Village Hall had to close but at least there was confirmation from the Stowmarket Foodbank that they are committed to covering our area alongside Waveney Foodbank and Gatehouse foodbank. The Community Council agreed that any funds or stock should be transferred to the Stowmarket foodbank which was duly done and we have now received a thank you letter on behalf of the Stowmarket and area Foodbank for our donation of £3043.84 and the remaining stock of 310kg.

Once again thanks to all those volunteers in our village who worked so hard over the past 3 years to keep our Foodbank working so efficiently.

What's going on in September at the Memorial Village Hall

Apart from the usual Thursday Coffee shop and the Community Lunch held on the second Monday of the month our regular Pilates and Self-defence classes continue and remain very popular. Early in the month there is a Craft Fare to be held in the Hall on Saturday 9th September from 11am till 3pm.

Breaking news is that the Village Hall has a new venture this month, the Walsham Memorial Hall Picturehouse Presents 'A Good Year' a cinema evening with a themed supper. This will be held on Friday 22nd September and tickets are available from 01359 258698 at £12.50 per head including meal and tea/coffee numbers are limited so don't miss out and book early. We will also be running a Table Top Sale and Car Park Boot Sale on Saturday 30th September from 9am to noon. Further details on both these events can be found in separate articles.

Rob Matthews



CAR BOOT & TABLE TOP SALE



Walsham-le-Willows Memorial Village Hall
Saturday 30th September 9.00am to 12 noon

Refreshments Available
(including bacon rolls)

Tables £5.00 Inside Hall
Car Boot £3.00 on Car Park

Please call Cheryl Bartholomew 01359 258349
or Karen Quinn -790466055
to book your spot





WEST SUFFOLK HORSEBOX SERVICES LTD



**We are a local, family run garage in Walsham-le-Willows who deal in,
Horsebox, Van, 4x4, Car and Lorry servicing and repairs.**

**Welding - Air conditioning - Car and HGV Diagnostics - Tyres
HGV MoT Preparation and Presentation
Hybrid and Electrical Qualified Technician**

**NEW to 2022. Car, Van, minibus and 4x4 MoT bay. Classes 4,5 and 7
Vehicle Collection and Courtesy Car Available, Subject to availability.**

**Unit 2, Old Bomb Store Summer Road IP31 3AJ
Telephone 01359-259994
Email wshorseboxservices@gmail.com**

WILLOWSERVE LTD

plumbing & Heating Services

- ✓ Worcester Bosch Approved Installers with up to 12 Years
Warranty on Worcester Bosh Boilers
- ✓ GASSAFE, OFTEC, C.I.P.H.E, CHECKATRADE, TRADING
STANDARDS approved
- ✓ Replacement Boilers, Hot Water Cylinders, Underfloor Heating, Servicing,
Repairs, General Plumbing, Bathrooms etc. FREE QUOTATIONS

For a Professional Reliable Service

**Tel: 01359 259886 Mobile: 07771 557937
willowserve_ltd@hotmail.com**



WALSHAM PICTUREHOUSE

Presents

‘A Good Year’

A cinema evening with themed supper

Friday 22nd September – Doors open at 6.30 pm

Supper served at 7.15 pm – Paying bar available throughout the evening

A Good Year is a 2006 romantic-comedy film produced and directed by Ridley Scott and starring Russell Crowe, Marion Cotillard and Albert Finney.

When city high-flyer Max Skinner (Crowe) inherits a vineyard in Provence from his estranged uncle (Finney), he is intent on selling it and continuing his life in the City of London – that is of course until he meets Fanny Chenal (Cotillard).

This is a wonderful feel-good film with a great soundtrack based on Peter Mayle’s book and set in London and the beautiful French countryside.

Menu - home cooked Chicken Provencal/vegetarian option*

please advise any food allergies at point of booking

Tickets available from 01359 258698

£12.50 per head to include meal and tea/coffee

(card payments accepted).

A Walsham-le-Willows Memorial Village Hall Event



REMEMBERING MAGGIE

Walsham Memorial Village Hall

Wednesday 13th September from 12 noon

Understand the motto of her life **LIVE LAUGH LOVE**

Share her exuberance for life and her great sense of fun

Enjoy a drink with cake and other goodies

Bring a small posy of flowers from your garden for taking to her grave.

Follow her story in the photographic display.

Share reminiscences of her fifty-one years in Walsham.

Find out about her campaigning spirit and her fights for truth and fairness.

Remembering to live, laugh and love as Maggie did.



Professional Chimney Sweeping

Chimney Matters

Town and Country

Mobile : 07767 864127

Phone: 01284 789663

www.chimneymatters.co.uk

email: chimneymatters@hotmail.com

- Open fires, Wood burners swept and serviced for maximum efficiency.
- Certificates issued.
- Cowls and Bird guards fitted.
- Fully insured.




botesdaledental
PRACTICE & IMPLANT CLINIC

Your local,
family run
**Dental
Practice**



Find us on
www.botesdaledental.co.uk



Tel: 01379897176

Email: reception@botesdaledental.co.uk
Botesdale Dental Practice, Holly Close,
The Drift, Botesdale, Suffolk IP22 1DH



Shine n Clean



Residential and commercial window cleaning.
A reliable window cleaning service using the latest
pure water and reach & wash cleaning system,
leaving glass sparkling clean for weeks.
No mess, no smears and no harmful chemicals

01359 259376

email: shinenclean@mail.com



WALSHAM-LE-WILLOWS AND DISTRICT WI REPORT



We were truly blessed with a perfect evening for our 'Simple Supper and August Garden Meeting'. As the sunlight faded gently away we tucked in to the simple supper colourful salads and quiche. Coffee cake and Eton mess to follow. The business details included plans for 'WI Day' on 16th September when our contribution to this national celebration of the start of the WI movement will be a short walk around Walsham with our Walking Group for those that want it. Starting 2pm and followed by afternoon tea in St Mary's Church Walsham from 2 pm -4pm All welcome to join us.

We did not rest for long as a questionnaire required us to explore the lovely garden and identify a whole forest of flagged plants. The less able puzzled over an anagram version with cryptic clues. Three ingenious vegetable animals competed for marks in the competition. A cheerful pig, a life like whale and a strange insect at least I think that's what they were!

Continuing our interest in green issues, September's meeting on 13th September will feature a talk by Patrick Barker on Local Wildlife and the competition will be for 'A photo of wildlife in your garden'.

Jill Newell



STANTON AND DISTRICT BRANCH ROYAL BRITISH LEGION



Ixworth Branch RBL are organising a trip Thursday 12th October to the National Arboretum leaving Ixworth at 6 30 am the cost is £40 per person which includes a two course meal before leaving at 5 30pm.

Anyone interested please contact Ben Lord Telephone 01359 230028.

During the first three months of this year the RBL received 75 requests for help in the County of Suffolk, paying out a total of £50,628-43p, the majority of requests were for energy costs which amounted to £22- 919.

Our next meeting will be held Tuesday 12th September at the Cock Inn Stanton at 8pm.

Hubby Frost.





OF WALSHAM LIMITED

✓ TIMBER & BUILDING SUPPLIES ✓ GARDEN & FENCING ✓ COUNTRY STORES



SERVING TRADE AND PUBLIC SINCE 1908



www.clarkesofwalsham.co.uk | 01359 259 259

The Street, Walsham-le-Willows, Bury St Edmunds, Suffolk, IP31 3BA

**FREE
DELIVERY
FOR ORDERS OVER
£100**

Upstairs

Downstairs

A PREMIER CLEANING SERVICE

.... Bringing a sparkle into your home

Regular Housework
Trained Personnel
Safe, Secure and Fully Insured
No hidden administration charges

**Tel: Gigi Wadham-Smith
on 07580314010
or email: gigi@upstairsdownstairs.biz**

Timber Lodge Rookery Lane Walsham-le-Willows Suffolk IP31 3FB

Visit us at: www.upstairsdownstairs.biz

Which is the world's longest mountain range?



WHY NOT GET INVOLVED WITH YOUR COMMUNITY WOOD?



Be in the Know

We hope you have received your copy of our new information leaflet and that this has prompted you to visit or revisit our community woodland and learn more. Our new signage and notice board show that we have come of age as a village organisation working to create space for biodiversity and wildlife.

Bat Safari

On Saturday 9th September we will be repeating our Bat Evening, meeting at 7:00 at the Wild Wood entrance just off Wattisfield Road. This will be led by an expert from Suffolk Bat Group who will bring along sonar bat detectors and help the group identify species of bat found in different locations in and around the Wild Wood.

One of the biggest threats to all bat species is the loss and fragmentation of habitat and this is why the creation of spaces like the Wild Wood and the new Jubilee Wood is so important to help preserve this species.

There are limited places available for this event so please contact Lorna or John to book a place. Donations are welcome on the evening.

Volunteering

Later in September we will be carrying out our annual mow of the Wild Wood. This is our key strategy for promoting the growth of wild flowers and a variety of grasses which in turn attract and feed pollinators which we humans depend on. We would welcome volunteers for raking the mown grass on Saturday 16th/ Sunday 17th and Saturday 23rd/ Sunday 24th starting at 10:00 am.

Pumpkin Trail

Finally, a date for your diary - Saturday 28th October will be our Pumpkin Trail and storytelling event in the Wild Wood after dark!

Details to follow in next month's edition.

We look forward to seeing you soon!

Lorna Mackinnon: mackinnonlorna@gmail.com

John Stebbing: john@architectatwork.co.uk 07831 325610

AUTUMN HAIKUS I

Quite the stupidest
Of all living creatures is
A dry old scarecrow.

On the ebb-tide beach
The hermit crab stops short
There is a footprint

On this still water
See where his reflection
Meets the waterfowl

Gathering starlings
Cry as they sprinkle berries
From the autumn tree

TIME FOR YOU™

DOMESTIC CLEANING

Are you tired of cleaning?



We have the
right cleaner
waiting
to help
you.

Regular - Weekly - Cleaner

01359 258991

Typically £15 per hour

www.timeforyousuffolk.co.uk



CHIMNEY SWEEP



ECO SWEEP
CHIMNEY SERVICES



- POWER SWEEP METHOD USED FOR A MORE THOROUGH CLEAN THAN A BRUSH
- FULLY INSURED
- INSURANCE RECOGNISED CERTIFICATES ISSUED ON EVERY SWEEP
- GOLD MASTER MEMBER OF GUILD OF MASTER CHIMNEY SWEEPS
- ALL CHIMNEYS, WOOD/MULTI FUEL BURNERS, AGA, BOILER FLUES SWEPT
- BIRD GUARDS FITTED

TEL: (01359) 232335

EMAIL: ecosweep@live.com

FLP Motors

*Your One Stop
Friendly Garage*

- * MOT's (Class 4 & 7 Up to 3500kg)
- * MOT Repairs
- * Diagnostics
- * Servicing (Inc under 3 years old)
- * Cambelts
- * Brakes, Tyres & Exhausts
- * 4 Wheel Laser Alignment (tracking)
- * Clutches
- * Air Conditioning Servicing
- * All Repairs Carried Out

**Free Collection and return
or courtesy car available**

Call Vic: 01359 250671

Flpmotors.com

MOT's £40 with this advert (Class4)

**Unit 23a, Shepherds Grove Ind Est
Stanton IP31 2AR**

Natural Balance Reflexology and Massage

Experienced reflexologist with
advanced training in:

- Pregnancy
- Menopause
- Anxiety and Mild Depression
- Reflexology Lymph Drainage
- Hot Stone Reflexology

I also practise Full Body, Hot Stone,
Indian Head and Baby Massage.



Please contact Zoie
07968 903567

zoie.tuley@icloud.com

HORTICULTURAL SHOW

This year's Show was well supported with 326 class entries, which was 100 more than last year. The judges commented that the standard of entries was very high. It was well attended and such a pleasure to see so many people enjoying a chat over tea and cake.

Special thanks to everyone who worked so hard to make it a success; from setting up the hall, acting as stewards for the judges, baking such delicious cakes and serving the teas, selling raffle tickets and collecting the entrance fees.

Thank you again for your support. We are always in need of helpers, so if you would like to get involved next year do get in touch – contact Debbie Licata (Horticultural Show Secretary 259686). Next years show will be on Saturday 10 August 2024.

The prize winners are listed below.

PRIZE WINNERS 2023

THE WALSHAM FLOWER TROPHY:

1. Pauline Batchelor 2. Judith Harlow 3. David Allen

THE FOLKARD CUP:

1. Hubby Frost 2. David Allen 3. Pauline Batchelor

FOTHERGILL'S SHIELD: Hubby Frost for Fuchsia (upright)

DOMESTIC CLASS CUP:

1. Anna Landymore 2. Pauline Batchelor 3. David Allen

THE W.I. CUP: Anna Landymore for Coffee & Walnut Cake

DECORATIVE CLASS: Cate Hadley

BUDDING ROSE CUP: None

THE WILLIAMSON PHOTOGRAPHIC CUP: Diney Martineau

RAY FREEBORN SUNFLOWER CUP: Gordon Scarfe (Height 4.05m)

HANGING BASKET COMPETITION: Leigh Hooper

THE NOVICE SHIELD: Anna Landymore

OVERALL SHOW WINNER AWARD:

1. Pauline Batchelor 2. David Allen 3. Hubby Frost

AUTUMN HAIKUS II

Perched on the bamboo
Marker of a new dug grave
The waiting dragonfly

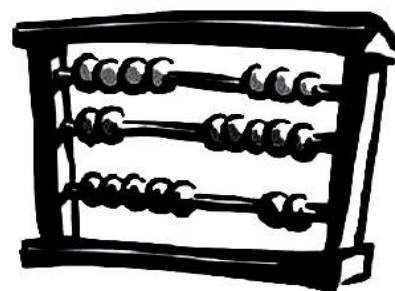
On this plain of mist
Nothing but flat endlessness
And red rising sun

Rising harvest moon
From this hut as yet unwalled
I will view it well

With philosophy
He contemplates the mountain
Old professor frog

TWINN ACCOUNTANTS LTD

We offer an **efficient and professional accountancy service** at a very competitive rate.



- ✓ Annual accounts and tax returns for Sole Traders, Partnerships and Limited Companies
- ✓ Preparation and assistance with VAT returns
- ✓ Payroll Services
- ✓ Construction Industry returns
- ✓ Management Accounts
- ✓ Tax Planning
- ✓ Company Secretarial Services

Tel: 01284 787616

Fax: 01284 787183

Email: info@twinnaccountants.co.uk

www.twinnaccountants.com

Suite 4, East Barton Barns,
Great Barton, IP31 2QY.

All accountants are not the same...we promise!

Langham Clinic.

Holistic Beauty & Complementary Therapies

Specialised treatments performed by highly trained & experienced therapists

Sports Massage - Pilates - Manicure & Pedicure
Electrolysis - Red Vein Treatment - Skin Tag Removal
Acupuncture - Oncology Massage - LaStone Therapy
Nutritional Medicine - Aromatherapy - Reflexology
Waxing - Mindfulness - Hypnotherapy - CBT
Dr. Hauschka Treatments (Holistic face & body treatments)

Everything possible at Langham Clinic is organic, sustainable & carbon neutral

www.langhamclinic.co.uk

Langham Grange, Stock Hill, Langham, IP31 3EE

Tel: 01359 258 700

WALSHAM HISTORY GROUP

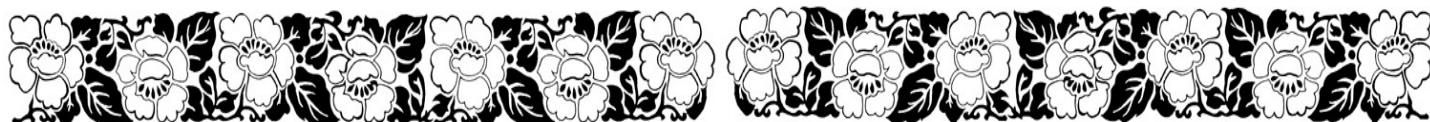
The Real Basil Brown

The talk The Real Basil Brown given by Sarah Doig, drew a large audience to the Priory Rooms. We all enjoyed an excellent presentation about a fascinating man. Basil was born in 1888 and spent almost all his life in Rickingham. Sarah has collated a vast amount of information and photographs covering his life from early school days to his death in 1977. After attending a local school and receiving basic education, Basil was self-taught, his thirst for knowledge never waning throughout his lifetime. Fortunately, for all of us, Basil was a hoarder, he never seemed to throw anything away. He kept diaries all his life and wrote a vast number of notebooks detailing his work, there is a card index surviving the gives a quick reference to his writings, and while employed by Ipswich Museum between 1935 and 1961 he sent a weekly report detailing all his work. Many of us have seen the film The Dig which was based on Basil's experience at Sutton Hoo, although Ralph Fiennes who played Basil in the film was meticulous in his research about Basil, he even visited Rickingham and cycled to Sutton Hoo to understand the experience. However, whilst the essential discovery story is true many events and characters depicted in the film are pure fiction. (That's show business) Nonetheless, his work leaves a legacy that will never fade.

On Monday 8th May 2023 a Blue Plaque was mounted on the house in Rickingham where Basil lived for over 40 years.

Sarah has spent four years writing a book on The Real Basil Brown and for anyone who is interested on finding out even more about the man a book launch is being held in Rickingham Village Hall on Sunday 3rd September between 10:00 am and 4:00 pm. Sarah will be giving illustrated talks at 10:30, 11:30, 2:00 and 3:00. Admission is free and tea, coffee, cakes and filled rolls will be on sale.

Jean Davies



The Royal British Legion Poppy Appeal 2023



The door to door Poppy Appeal collectors will be knocking on your door between
28th and 12th November.

Please have some cash handy to donate to this very worthwhile cause.

The RBL provide support to more than 90,000 people every year, and your donation will be very much appreciated.

A few more collectors are needed to cover the whole village. If you would like to help, please contact **Fiona Glover** on **01359 258223** or email **figlover@btinternet.com** for more information.



FITNESS



CONTACT US

- lsfitness35@gmail.com
- Lewis - 07740 185204
- Sam - 07860 102306

A functional fitness inspired gym based in Allwood Green. We promote a healthy, active lifestyle through dedicated Functional Fitness, CrossFit and Personal Training for all ages and abilities within our custom built, well equipped training facility.

Units 20/21, Rickingham Business Centre,
IP22 1LQ

LS-FITNESS.COM

SERVICES

- Group Fitness Classes
- Kids Classes
- 1-2-1 Personal Training
- Sports Performance Sessions



Ordering your heating oil through **CERTAS ENERGY** can help **YOUR SPORTS CLUB**



They will make a contribution to the Sports Club of
£10 per 1000 litres or £5 per 500 litres

Call 01603 885100 (sales team)
or 01603 885236 (service team)

Every order so far placed, has been competitively priced against other
suppliers - why wouldn't you help yourself and us

“All contributions gratefully received”
says Ian Campbell (Treasurer)

DIARY OF EVENTS

SEPTEMBER		Wed 15th	History Group	
Wed 13th	W.I. Garden Wildlife		Priory Room	7.30pm
	Priory Room			7.45pm
Wed 20th	History Group	Sun 19th	Tree Planting	
	Village Hall	Sun 26th	Wild Wood	10.00am
OCTOBER		DECEMBER		
Wed 11th	W.I. Bomb Disposal	Sat 2nd	Christmas Tree	
	Priory Room		St Mary's	4.00pm
Wed 18th	History Group	Wed 13th	W.I. Christmas Workshop	
	Priory Room		Priory Room	7.45pm
Sat 28th	Pumpkin Trail & Story	JANUARY		
	Wild Wood	Wed 10th	WI Birthday Party	
NOVEMBER			Priory Room	7.45pm
Wed 8th	W.I. Community Singing	FEBRUARY		
	Priory Room	Wed 14th	W.I. First Aid Course	
			Priory Room	7.45

WALSHAM & DISTRICT W.I.

Local Wildlife

A talk by Patrick Barker

Competition: A Photograph of Wildlife in Your Garden

Wednesday 12th September at 7.45pm

NEW MEMBERS ALWAYS WELCOME

Ladies are able to attend 2 meetings free of charge before joining.



THE MOBILE POST OFFICE

The Mobile Post Office will still be coming to the Village Hall Car Park on Thursday mornings

from 11:00am till Noon till further notice.



WALSHAM SPORTSCLUB EVENTS FOR SEPTEMBER & OCTOBER

Sunday Night Bingo

10th & 24th September

8th & 22nd October

7pm start in the Clubhouse

Mega Bingo

Sunday 3rd September

In the Marquee at 7pm

Saturday 2nd September at 7pm

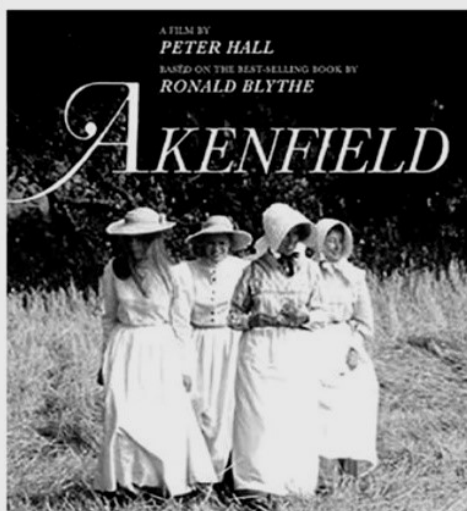
FLASHDANCE

For details see page 37

**For further information phone
Julian 07597340273**



WALSHAM History Group



SPECIAL FUNDRAISER - MOVIE NIGHT

AKENFIELD



*The classic Peter Hall film
of the Ronald Blythe book,
about Suffolk village life.*

Wed 20th Sept 2023, 7.30pm

Memorial Village Hall, Walsham-le-Willows

All tickets £5.00. Refreshments available.



WALSHAM PICTUREHOUSE PRESENTS 'a good year'

produced and directed

by Ridley Scott and starring Russell Crowe, Marion Cotillard
and Albert Finney.

A cinema evening with themed supper

Friday 22nd September

Doors open at 6.30 pm

Supper served at 7.15 pm

Paying bar available throughout the evening

Menu - home cooked Chicken Provencal/vegetarian option*

☐ please advise any food allergies at point of booking

Tickets available from 01359 258698

£12.50 per head to include meal and tea/coffee

(card payments accepted).

**A Walsham-le-Willows
Memorial Village Hall Event**

Discover the UK's
largest women's
organisation!

theWI
INSPIRING WOMEN



Saturday 16 September

Meet your local WI and find out
what we get up to!

**Walsham le Willows WI
Walk & Afternoon Tea | 2PM
St Mary's Church**

Find out
about other
WI events
across
Suffolk



www.sefwi.org.uk
office@sefwi.org.uk
01473 251632



suffolk-west.thewi.org.uk
office.swfwi@gmail.com
01284 336645

MORE OR LESS

□ □ < □ □ > □

□ □ □ > □ □

∨ ∨
□ > □ □ □ > □

^
□ > □ > □ □ □

∨ ∨
□ > □ □ □ > □

The numbers 1 to 5 should appear in each row and column.

The greater and less signs indicate the relative size of adjacent numbers.

The Priory Room

The Priory Room in Walsham
is available to hire for private functions.

For bookings or further information, please contact:

John Boulter 07908 010555 johnboulter@yahoo.com



COMMUNITY LUNCH



Hello to you all, hope you are well and have had a good summer holiday.

The Memorial Village Hall will be open from 12.30pm on Monday 11th September 2023. The menu is Cottage pie with vegetables followed by Spotted dick and custard served at 1pm, Tea and coffee to follow.

We look forward to seeing you there.

Please book a place, at £7.50, with Shirley on 01359 258532 by 5pm on Thursday 7th September 2023.

Shirley White



WALSHAM-LE-WILLOWS PARISH COUNCIL MINUTES

of the meeting held on Wednesday 9th August 2023 commencing at 7.00 p.m. in the Memorial Hall.

[Pending formal approval, these minutes have been informally approved. Any further corrections will be proposed & minuted at the next meeting]

PRESENT: Cllrs. Bartholomew, Belson, Brookes, Mecrow, Roberts, Tuck.

ALSO PRESENT:

1. OPENING – meeting commenced at 19.15
2. MEMBERS APOLOGIES
Cllr J Winch.
Consent was given.
3. CO-OPTION
Ann Brookes was welcomed as a co-opted member of the Parish Council and completed the Declaration of Acceptance of Office which was countersigned by the Clerk. Cllr Brookes also signed a consent to Summons by email.
4. DECLARATIONS of Pecuniary & Non-Pecuniary Interests
 - a) Cllr Roberts disclosed a non-pecuniary interest in any discussions that may happen about planning applications between the Sports Club and the Community Council.
 - b) No gifts of hospitality were declared.
 - c) No declarations of lobbying for planning matters on the agenda
 - d) Dispensation granted to Cllr Roberts.
5. MINUTES - To Receive and consider the minutes of the following meetings (as previously circulated)
 - Meeting of 12th July 2023 for approval and signing as true and accurate record with correction to the approximate numbers quoted for traffic movement for the proposed Equation development under agenda item 7a which should have read: “..estimated vehicle movements are 4000 private vehicle movements per day plus 900 HGV movements per day.
6. REPORTS FOR INFORMATION & QUESTIONS - to receive written reports & put questions: District Cllr Winch had given apologies; County Cllr. Fleming had given apologies. Reports had been received.
7. PUBLIC FORUM
Three members of the public were present to enquire as to the reasoning for the Parish Council’s objection to planning application DC/23/02819 (including the applicant). It was explained that the Parish Council can only comment on the application as put before it and that this was a problematic application because it was ambiguous about the exact proposals which were confusing for councillors and needed more detailed explanation to be clear. The applicant (or representative) had not attended the meeting where this application was considered which would have been helpful. The application was contradictory on the question of replacement or



We provide independent financial advice in the following areas:

- **Savings and Investments**
- **Retirement Planning**
- **Long Term Care Plans**
- **Estate Planning and Family Wealth Preservation**
- **Mortgages**
- **Equity Release**
- **Financial Protection**

10 Forbes Business Centre, Kempson Way, Bury St Edmunds, IP32 7AR

admin@metritawm.co.uk

01284 700619

Tax planning is not regulated by the FCA

Metritá Wealth Management is a trading name of Metritá Wealth Management Ltd which is an appointed representative of 2plan wealth management Ltd. It is authorised and regulated by the Financial Conduct Authority under no: 838586. Registered address: 10, Forbes Business Centre, Kempson Way, Bury St Edmunds, IP32 7AR. Registered in England and Wales under no. 11832336.

POLLARD & CO



Builders of Integrity

TREVOR POLLARD

Millfield
Wattisfield Road
Walsham Le Willows
Bury St Edmunds
Suffolk
IP31 3BD

Tel & Fax : 01359 258339

Mobile : 07768 124715

- New Houses • Extensions • Renovations
- Barn Conversions • Refurbishments

Email: enquiries@pollardandco.co.uk

addition of storage space and the retention of the existing storage. The block plan showed a new shipping container in the position of the old container and the old container at right angles to the new container – this appeared to be a 3 x volume increase which was not explained in the application itself. It was acknowledged by the applicant that the dimensions were not accurate. The application was silent on the colour of the proposed container(s) because it was assumed this was irrelevant as they would be hidden. But the proposed siting in a conservation area makes intention on this very relevant. Parish Councillor's expressed regret about the situation but explained that they have a very small part in the planning process which is determined by planning legislation and has to be followed.

8. **PLANNING MATTERS** (the Parish Council has not formal legal right of comment on applications to West Suffolk but has been informally consulted.)

a) Matters relating to DC/22/2190/HYB Proposal to West Suffolk Planning Authority for Hybrid planning (Jaynic) Location Land At Shepherds Grove Bury Road Stanton Suffolk. – No specific matters.

b) Matters relating to DC/23/1154/OUT Proposal to West Suffolk Planning Authority for Outline Planning Application (means of access to be considered) for demolition of existing buildings and structures to provide new employment floorspace (Classes E(g)(iii), B2 and B8) including vehicular access with all other matters reserved Location Shepherds Grove Industrial Estate East Sumner Road Hepworth Suffolk Applicant , Shepherds Grove Investment LLP

Cllr Mecrow had had time to take a very quick look at the proposals. It was agreed that there were many inaccuracies and omissions. It was proposed and agreed to establish a sub-group of all Parish Councillors who can attend, to look at these issues in more detail with help of consultants to formulate a response to be submitted before deadline of 8th September. Clerk to contact Cllr R Winch and Andrea Long to see when they might be available to meet.

9. **PLANNING OUTCOMES** (decided by Mid Suffolk District Council, Planning Authority) for noting only

APPLICATION FOR PLANNING PERMISSION - DC/23/01951 Proposal: Full Planning Application - Erection of 2No dwellings. Location: Land East Of Maltings , Palmer Street, Walsham Le Willows, IP31 3BZ MSDC Granted This Application.

10. **NEIGHBOURHOOD PLAN** – to receive any comments from Parish Council representatives (Cllrs. Belson & Mecrow) and consider any matters arising.

Cllr Mecrow noted Regulation 16 consultation completed. Plan now under examination and the examiner had already submitted some comments to which the steering group are formulating responses. Cllr Mecrow thought that what is meant by 'Summer Road' should be clarified as the stretch from the Parish Boundary and Fishponds Lane to the Six Bells. The plan is on track for an autumn referendum. The Clerk was asked to enquire how much notice the Parish Council would get for the referendum as deadlines for publicity would be key. Clerk to clarify with consultants.

11. **PLAY AREA** – consider any matters arising.

Quotes for Play Area gates were considered and given the almost matching prices the Clerk was asked to engage the contractor who is most local to the village and to

GROUNDWORK & PLANT HIRE

- Mini Digger & Driver for Hire
- Block Paving & Patios
- Extension Bases
- Driveways & Pathways
- Drainage Work
- Footings & Oversites
- Gardens & Site Clearance

C.S. CONTRACTORS

01284 724048 / 07720843577

108 Horringer Road Bury St Edmunds
IP33 2DP

www.cs-contractors.co.uk



Elite Fencing and Landscaping

JUST 10 MINUTES AWAY FROM YOU.
FENCING, GATES, DECKING, PATIOS,
PERGOLAS, PATHS, BASES,
TURFING, DEMOLITION,
REGRAVELING DRIVEWAYS,
GARDEN CLEARANCE,
GARDEN PROJECTS & RESTORATION,
REPAIRS, ODD JOBS & MORE!

ALL TYPES OF OUTDOOR WORK
UNDERTAKEN - SMALL OR LARGE
FOR FREE ESTIMATES CALL TREVOR
ON 01359 221128 OR 07761651567

EMAIL

TREVOR@ELITE-FENCING.CO.UK
WEB: WWW.ELITE-FENCING.CO.UK

N & S PEST CONTROL — SERVICES —

RATS! MICE! RABBITS! MOLES! BIRDS! WASPS!
FLIES! ANTS! SQUIRRELS! & MINK!

All effectively controlled by

Norfolk & Suffolk Pest Control
Chris Earth, 2 Orchard Lane,
Pakenham, Nr. Bury St. Edmunds,
Suffolk. IP31 2LQ

Phone: 01359 232538 Mobile: 07885 745446



JB LANDSCAPES

All forms of landscaping and garden
maintenance undertaken

- Patios & paving
- Grass cutting
- Fencing
- Garden edging
& retainers
- Decking
- Shed bases

For a free quote contact

07931089125

contact.jblandscapes@gmail.com

reiterate the importance of the 12mm gaps around the gates to comply with RoSPA inspection report.

12. FINANCE & AUDIT

- a) Bank reconciliation for period ending 31st July 2023 was approved for signature.
- b) Accounts awaiting payment summary and invoices for payment were approved. (Appendix 1).
- c) The Clerk presented a mandate to correct the internet banking access permissions for Cllr Tuck to match those of other signatories.

13. PARISH COUNCIL OBJECTIVES – 2023/24

Following on from discussions since the meeting was held Cllr J Winch proposed (by email):

Council considered the proposal by Cllr Winch (not present) to accept the targets set for the Clerk at annual appraisal in February and which were deferred by the Parish Council until after the Parish Council had formulated its own objectives for 2023/24. Given that the chronology of the annual meeting of the Parish, the setting of Parish Council Objectives and the setting of the Clerk's objectives at appraisal needed to be realigned in order to make sense of the process, this proposal was not approved. The Clerk suggested that the Annual Meeting of Parish in 2024 should be in early March, the Parish Council should set its objectives at the monthly meeting in March and the Clerk's appraisal & objectives setting should happen before the end of April so that any decisions on pay awards/increments could feed into the process before start of new financial year. This was unanimously agreed.

14. CLERK & COUNCILLOR REPORTS

- a) To consider and receive the updated action log for any matters of concern/note. – None were raised.
- b) In absentia Cllr J. Winch proposed that Jessica Fleming is asked to actively investigate weight limit on Causeway bridge in conjunction with SCC highways as a step forward the Parish Council's comments, approved and submitted to Highways, Babergh Mid-Suffolk and West Suffolk District Councils on the 26/07/2023.

It was decided that agenda items c, d, e and f and g, proposed by Cllr J. Winch in absentia relating to work to be done on 20's Plenty, and engagement with the contractor for the stream clearance be postponed until Cllr J. Winch is present.

- h) To consider and receive any other matters of concern/note for next agenda.
 - Cllr Bartholomew proposed that the Clerk contact MSDC to ask about clearance of the banks to the properties on Millar's Close as the overgrowth is causing sight obstruction and hazard to vehicle and pedestrian traffic. This was agreed.
 - Cllr Bartholomew also raised the issue of the hedges encroaching on highway at Grove Cottage and from Grove House on The Causeway. Also the hedging to the pavement from Grove House was discussed. As the Parish Council paid a considerable sum a couple of years back to have debris at the base of the hedging cleared it was proposed that the Clerk write to the owners to ask if they might cut the hedging again to prevent it from encroaching as far as it did previously. The Clerk was asked to write to both residents to ask if they

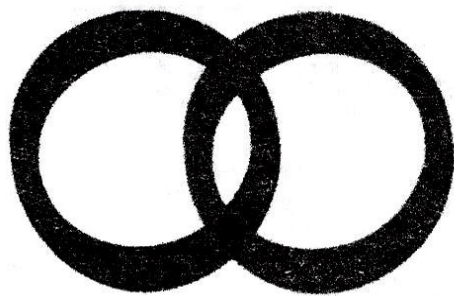
might have these cut.

- Cllr Mecrow reminded that the Play Area working party is due to meet on Saturday 19th August at 10:30.
- i) Next Meeting – 6th September 2023 7pm - Memorial Hall. **NB A week earlier than usual.**

APPENDIX 1

Payments for Authorisation AUGUST 2023

#	Payments OUT	Amount	Description
1	CGM	£90.00	Play Area Grass Cutting 21/07
2	Memorial Village Hall	£25.00	Parish Council Meeting
3	M&TJ's	£756.00	Closed Churchyard maintenance
3	Parish Council Employee	£423.07	Wages
#	Payments IN & Other Payments/Transfers	Amount	Description
1	PlanningPortal.co.uk DUE	£58.50	Refund of planning application fee
2	Footpaths grant DUE	£555.49	Second cut
3	Neighbourhood Planning Grant	£1790.00	For last stage of work on plan



**ROBINS
ROW**

Insurance Brokers Since 1867

AN INDIVIDUAL SERVICE FOR ALL YOUR COMMERCIAL AND PERSONAL INSURANCE

**SPECIALISING IN HIGH VALUE HOMES,
COUNTRY HOUSES, LISTED AND THATCHED PROPERTIES
AND ALL COMMERCIAL INSURANCE SOLUTIONS**

TEL: (01787) 378205

EMAIL: ADMIN@ROBINSROW.COM

HALL STREET, LONG MELFORD, SUDBURY CO10 9JB

AUTHORISED AND REGULATED BY THE FINANCIAL CONDUCT AUTHORITY

PHILIP MERRY

Rector of the Benefice of Badwell and Walsham 2017 – 2023

Philip Merry arrived in Walsham to take up his position as Rector on 24th April 2017. His last Sunday service was on 6th August 2023, and in his typical helpful way he also conducted a wedding on the following Friday.

He was supported in his work by his wife Denise, herself a church elder and part of the ministry team; and always willing to turn her hand to anything extra that needed doing; whether wrapping fabulous raffle prizes at Christmas or baking her little cheesy biscuits for Sunday mornings after the various services.

Philip is very interested in wildlife and knew every bird that was nesting in his garden, and many of his parishioners' gardens, and was thrilled to relate how one morning he had spotted a pine marten on the rectory fence. In the six and a half years since Philip and Denise arrived in this benefice, they both showed great community spirit and became involved in a wide range of village activities in all six parishes supporting parishioners way beyond purely church matters. They will be greatly missed.

Over 110 people from all six parishes in the benefice attended the service on 6th August, followed by a bring & share leaving lunch for Philip and Denise in The Priory Room. They were presented with a cheque and a Rambling Rector rose, with the thanks of everyone.

Judith Harlow

SEPTEMBER CHURCH SERVICES

3rd September	13th Sunday after Trinity	
11.00am	Holy Communion	Finningham
11.00am	Harvest	Langham
10th September	14th Sunday after Trinity	
8.00am	Holy Communion	Walsham
11.00am	Holy Communion	Walsham
11.00am	Harvest	Wattisfield
17th September	15th Sunday after Trinity	
11.00am	Family Communion	Finningham
11.00am	Harvest Songs of Praise	Walsham
24th September	16th Sunday after Trinity	
8.00am	Holy Communion	Walsham
9.30am	Harvest	Badwell Ash
3.00pm	Harvest	Westhorpe
1st October	17th Sunday after Trinity	
11.00am	Family Communion	Walsham
11.00am	Harvest	Finningham


*Oil Fired Pressure Jet Boiler
Servicing & Plumbing*



**ANDY'S
OIL BOILER
SERVICES**

ANDY BACOS

 07775 751303

 andy.bacos@ntlworld.com

 Andy's Oil Boiler Services



J W Amps Ltd



**Offering service and repairs to all types and makes of
garden machinery, ATV's, compact tractors etc.**

Machinery bought and sold

**Over 15 years experience – factory trained by
Briggs & Stratton, Stihl, Westwood and Countax.**

Collection and delivery service available.



**Contact Simon
Mobile 07974 430366**



E-mail: simonamps@btinternet.com

GREEN DILEMMAS

the ULEZ debate - what's next?

The publicity around extending the Ultra Low Emission Zone (ULEZ) to outer London has raised the issue of how Green 'taxes' might impact individual citizens.

From a society point of view there are significant potential benefits from cleaner air. According to Public Health England air pollution is the single largest environmental risk to public health and linked to between 28 to 36,000 UK deaths a year. The total NHS costs linked to environmentally related asthma over the past decade are in the region of £1.5 billion.

On the other hand, if you need to travel for work in Greater London using an older car, it will cost an extra £12.50 a day or up to £4,500 a year. Most people would agree that ULEZ is a desirable change, but it disproportionately impacts some people. In the end, the scrappage scheme has been expanded to cover any household with a heavily polluting car or motorbike, at an additional cost of over £50m.

There are currently a number of big deadlines looming that could end up being problematic unless we take action in advance.

There is a proposed ban on installing new oil boilers from 2026 which could make life difficult for roughly 1.7 million people mainly in rural communities. There has been very little discussion about the cost implications for these citizens if their boilers need replacing.

Similarly, new gas boilers (the main heating source in the UK) are banned for new homes from 2025 and all properties by 2035. We urgently need to move away from using fossil fuels for heating our homes but it's unlikely this transition can happen without significant financial assistance.

We currently have an intention to phase out the sale of new petrol and diesel cars and vans by 2030 (hybrids by 2035). This seems a long way away, and most people don't buy new cars, but it looks like we are going to reach the deadline with a pretty poor charging infrastructure, a relatively low level of electric car usage and continued limited investment in public transport. These are all recipes either for delay or significant problems.

There are also a lot of other initiatives that will have cost implications. For example there are recycling changes planned which would force companies to pay a fee if their products are difficult to recycle. The companies are in turn threatening to increase their prices. In a cost of living crisis this would add to existing pressures even though the overall cost to society will be reduced.

There is an obvious theme here. We need to make these environmental changes but if we don't take measures to mitigate their impact we will most likely end up delaying the change (as we have just done recently with the recycling changes) or some people will be disproportionately impacted.

Richard Winch
+44 7931 709486





M A Heating Services



- * Oil, Gas and LPG boiler servicing, replacements and repairs
- * Repairs to central heating system faults i.e. pumps, programmers and cylinders
- * Servicing and repairs to Rayburn, Aga Stanley and Esse
- * Landlord's Certificates

Telephone: 01379 783427

Wickham Gate, High Street, Gislegham, Suffolk, IP23 8JD

The Old Tea Room Veterinary Surgery

For a professional caring service

Tel: 01359 241761

Station Road, Elmswell, Bury St Edmunds, IP30 9HA



A member of
Stowe Veterinary Group
www.stovevets.co.uk

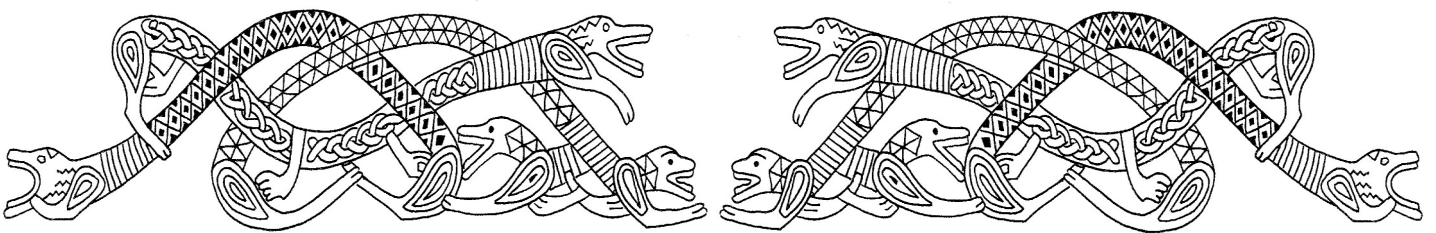
WILDLIFE IN SEPTEMBER

As you are walking through the fields and the woods take a close look around you especially at the leaves of an Oak tree. You may see what appears to be a normal looking leaf, but if you turn the leaf over to look at the underside you may spot some growths. These are called Galls. They can grow on other plants but frequently targeted are the Oak trees. These growths are produced by the larva from Gall Wasps, Midges, Mites or Fungi. Many of these invaders are too small to see. The Galls on the Oak trees look like little marbles or buttons and they will be in tiny clusters. Each of these little buttons will be a tiny nursery for a Gall Wasp larva. When the leaves fall, this Wasp larva will overwinter in the fallen leaf until emerging in the Spring when it hatches.

Something else that is preparing to hibernate in the cold months ahead is the Hazel Dormouse. A very shy creature that you will not see often, if at all. With them being nocturnal, makes it even harder to catch a glimpse. Their lifespan is up to 5 years, and they weigh around 15-30g only. These next few months will be busy with them trying to put on as much body weight as possible before the cold winter bites. They will feed on fruits, berries and seeds, and it really is a case of survival of the fittest. Before hibernation their body weight can reach 35g, which will be needed as by the time they wake up in spring their weight will have dropped by a third.

Some creatures do not have to always be spotted outside, some venture into our homes, such as the Common Harvestman. They get their name as they are more commonly seen in late summer and early Autumn after the fields have been harvested once again. They are not a spider although they do resemble one with their spindly legs. They lack silk glands so cannot spin a web and they also lack venom. They have a tiny body which sits in the middle of these eight legs. The Harvestman will eat about anything from small prey which they will catch with the small hooks on their legs, to fruit and fungi. They have a very short lifespan of only one year. So, if you see one remember these huge leggy creatures are harmless.

Angie Bennington



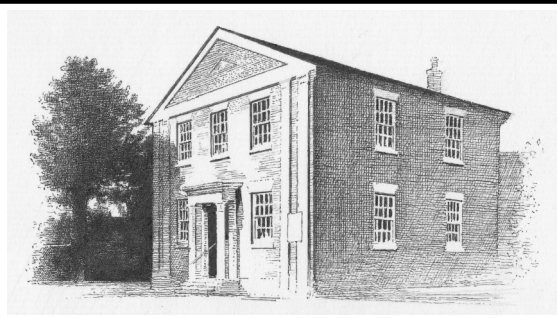
AUTUMN HAIKUS III

Wet morning garden
My sunny chrysanthemums
Are sea-mist shrouded

With moon rising
Leaf after leaf after leaf
Falls fluttering down

This is my own place
Mud-hut and companion tree
Shedding leaves

This is my own place
Mud-hut and companion tree
Shedding leaves



Walsham Congregational Church

The Street, Walsham-le-Willows, Suffolk. IP31 3AZ

Church Secretary (John Landymore)

01359 - 258986

We are open for worship each Sunday at 11.00 & 6.30 so why not come along? Please be assured of a warm welcome; it would be lovely to see you.

The Shark Papers

In days long ago when Jamaica was ruled from Britain, the seas around that island and the wider Caribbean were infested with pirates and smugglers. One day, on August 28th 1799, in an area listed as off-limits to American shipping, the 12-gun navy cutter 'HMS Sparrow' intercepted a small American brigantine named 'Nancy' as it approached the island of Ile-a-Vache, south of Haiti. Although in a place they shouldn't have been, Captain Thomas Briggs presented his papers claiming the ship was Dutch and showing no evidence of wrongdoing. Lieutenant Hugh Wylie, the commander of 'Sparrow', however remained skeptical and, strongly suspecting Briggs to be a smuggler, sent him to have his case heard in Kingston, Jamaica.

History shows that Wylie was fully justified in his doubts. Two days later, the British schooner 'Ferret', which had become separated from 'Sparrow' whilst also patrolling the Mona Passage, came upon a group of sharks eating a bullock carcass and, pulling alongside, the crew managed to catch an unusually large one and drag it aboard; inside the great fish's stomach was a pack of papers relating to the misdeeds of 'Nancy'. The 'Shark Papers', as they became known, arrived in Port Royal just as Briggs and his crew were to appear before the Vice Admiralty Court. Imagine the absolute despair of those men who, certain that they would be acquitted, were suddenly confronted by indisputable evidence of their crimes: evidence that had been thrown overboard when pursued, evidence which they expected to be buried forever in the depths of the sea was now presented before them for all to see!

But what of us? What of the guilt and shame if all our sin should be revealed, and those hidden things that trouble the conscience should be discovered? Of course, nothing is ever hidden from our Holy God as he warns, ***"be sure your sins will find you out"*** (Numbers 32:23). Just as those seamen were called to give account before the Admiralty and were condemned by the evidence revealed at the opening of the 'Shark Papers', the Bible asserts that ***"every one of us shall give account of himself to God"*** (Romans 14:12) and shall be personally accountable for what is revealed about us when God's books are opened on that great final day of this world's history, when Christ returns to ***"judge the world in righteousness"*** (Acts 17:31).

How wonderful it is though for those who have repented of their sin and sought the Lord Jesus Christ for forgiveness: they shall face no punishment for sin because Christ has already paid the price as he ***"bare our sins in his own body on the tree"*** (1 Peter 2:24) and ***"cast all their sins into the depths of the sea"*** (Micah 7:19). Should this not cause us to love and worship the Saviour with all our hearts, and place our faith and trust in Him for time and eternity?

Their sins and their iniquities will I remember no more.

(Hebrews 8:12)

WALSHAM REMEMBERED

I will describe the village street as I remember it in 1910. Starting off at the bottom end was the Butchers shop run by David Rolfe's grandfather, almost opposite, over the bridge, was the Blacksmith's Forge, which did a roaring trade - next to the two schools, one in front and one over a little bridge at the back. Back over the road again was the Congregational Chapel and a little further up the road was a very enterprising man whose name was Holden. He had bought a ramshackle old lorry - he covered it in, put boards round the sides for seats and charged one shilling for adults and sixpence for children to take them to Bury and return. He made a fortune in very quick time. Opposite was Harry Flatman who sold maize and bran to people who kept chickens. He never sold more than six pennyworth per person but, when he died, he left sufficient money for his son to buy the Mill up the Wattisfield Road and that son was able to pass on a very flourishing business to his son.

On the corner of The Avenue was a Sweet and Fancy Goods Shop, run by Mr Joe Granger. A little further on, on the right-hand side of the Infants School. I could write a book about that school. Everyone taught at that school had a wonderful start in life. There was the head teacher and a pupil teacher. The headmistress loved the children and they loved her, and those who went on to the larger schools could all read and write.

Next door to the school was Harry Nunn's Ironmongers Shop which sold everything from screws and nails to brushes, dustpans and the like. Further up their yard we used to watch Mr Oxborrow chipping out the names on gravestones with a wooden mallet and chisel. I thought that it was an exceedingly clever thing to do, as one false tap and the whole stone would have been spoilt. I have seen many clever crafts in my time, but I always rate that as the cleverest of all.

John Death (believe it or not) and Joe Granger used to make the coffins.

Some way from Harry Nunn's was a small branch of Lloyds Bank, and next to it was the Chemist and Post Office. At this shop you could buy anything you wanted in the way of stationary, hair nets, shampoos and post cards of the village.

Almost opposite was Mr Kenny's Bakery - run by Jimmy Kenny's grandparents. Now that really was something! The glorious smell of newly baked bread would greet you as you walked inside the door. They made the most wonderful cakes and the Hot Cross Buns were 'out of this world' - I have never tasted anything like them - they were spicy and delicious. Queues would form outside the bakery on Good Friday to buy them. They sold at seven for sixpence! I'm afraid, as children, the buns meant more to us than poor Jesus dying on the Cross. After Mr Kenny had baked his batches of bread and cakes, he would let people, who made their own bread to take it along and have it baked in his oven, for a small sum of money. It was my brother's task, when he came out of school, to take our tins of bread round every Tuesday and Friday. One day he thought he would do a bit of showing off and put the tray on to his head. It was balanced nicely and I think he would have got away with it, but he made the mistake of turning his head to see if someone was watching him. The tray slipped - he was near to the railings of the river at the time - and all the loaves went into the river!! My mother took most of his clothes off and go into the river to try and find the tins, as they were more important than the bread. He got a first-class hiding as well! He never did that again, but years after we laughed a lot about it. Well to get back to The Street again. Next door to the Bakery there lived a tailor by the name of Mr Aldridge and just past his shop was an alley at the bottom of which lived Mr Sturgeon - he only had one leg. He made boots

and shoes and cut men's and boys' hair.

Just across The Street was Mr Savage's Grocery and Drapers shop - he also sold shoes. A little further on was a harness maker - he made everything needed to harness a horse - and made it all by hand too. A little higher up was another Grocers and Drapers, owned by Mr George Clamp. Next door to him was another tailor, by the name of Mr Landymore and further on was Bertie Death's bicycle shop. Opposite was another Butcher's - Mr Blizzard made the most delicious sausages - and then you came The Blue Boar pub. On the other side was Mr Mapleton's Sweet Shop - from here you could get three sherbet suckers for a penny - at Mr Granger's only two for a penny were offered - so we used to trudge all the way up The Street for an extra one! That was competition, that was!

Can anyone reading this think of anything we lacked. The fisherman came round once a week from Bury.

After my parents died, I did not come back to Walsham for many years and when I did, I got the shock of my life. The Street was 'dead' - no Bakery - no Harry Nunn - no Tailors - no Mapleton's Sweet Shop or Granger's. The Church that used to be so full is now almost empty and is being kept alive by a small band of stalwart helpers. There must still be something nice about it as the 'foreigners' have descended upon it in great numbers - our 'get-togethers' have been replaced by cocktail parties BUT that is called progress.

A.M.U

This is part of an article that appeared in the Walsham Observer quite some time ago.

Stuart Walker



Decorating, Painting & Refurbishments

A locally based company offering an honest and reliable service.

Painting - Decorating— Refurbishments - Repairs.

All work considered indoors & out! Fully Insured & free quotations provided. Please contact Stuart on Tel: 07711 606 464
or Email: stumal@hotmail.co.uk

PILATES

What is Pilates?

Pilates is a form of strength training which encourages better posture, and helps individuals to become more body-aware whilst promoting functional movement, and core strength. It is also beneficial for those suffering with symptoms such as lower back pain, muscle tightness, or other muscle aches and pains. It can be seen as a form of exercise in itself, or as a complementary form of exercise alongside your existing sport, or day-to-day activities.

A short history of Pilates:

The concept of Pilates originated during the 1st World War when Joseph Pilates invented a series of exercises to improve muscle strength and physical wellbeing for injured Prisoners of War.

After the beginning of World War 1, Joseph Pilates was interned as a prisoner of war by the British Government. During his time at Knockaloe Internment Camp on the Isle of Man, Joseph Pilates, along with other prisoners of war, occupied himself with activities such as gymnastics, and boxing, as they were keen to maintain fitness.

Joseph was inspired by his time working as a hospital orderly in one of the camps' hospital huts, using the springs from the metal hospital beds initially inspired his early development of some of the larger Pilates equipment. He initially experimented with the method on different body types and on people with different injuries or restrictions, gradually developing his method, and ultimately this series of exercises has become known as the 34 original Pilates mat exercises. These exercises have since been adapted by physiotherapists to develop the style of Pilates we see today.

Australian Pilates and Physiotherapy Institute (APPI)

APPI was established 20 years ago by two Australian Physiotherapists. Their initial study in the 'Clinical Relevance of Pilates Exercise for clients with Back and Pelvic Pain' led to the development of the APPI Method that we teach today. Their study found that the benefits of the Pilates exercises were not being optimised due to the high level of strength, control and body awareness initially being asked of clients. If the movements were modified, then a new form of Pilates-based exercise could be a lot more successful in the rehabilitation field.

This ground-breaking approach led to the development of the step-by-step program of APPI. Every Pilates exercise was analysed on its effectiveness for a client that had suffered an injury. Modifications were made, and a unique exercise-level approach developed to allow a client to be trained correctly from an injured state to a fully fit, functional and efficient state. This allowed Pilates to be used by health and fitness professionals alike to empower clients to be able to embrace Pilates from any fitness level.

Pilates in your area:

Lara Pepper offers a whole-body, holistic approach to health and well-being, following a science-based approach to functional movement, with the aim to complement conventional physio treatments. Lara teaches Pilates classes in the local area and is a fully certified APPI instructor. The classes are for all abilities, with exercises being adapted to suit the individual. Mats and equipment are provided, however if you prefer to bring your own that is fine. A free taster session is offered before committing to a course.

For more information on classes near you please contact Lara on:

Tel: 07974142240 **Email:** contact@larapepper.com www.larapepper.com

IS YOUR COMPUTER GIVING YOU HEADACHES?

PC & Laptop Repair
Virus Removal
Diagnose Start up Problems
Replace Hard Drives
Replace Power Supplies (PC Only)
New Laptop Screens
New PC / Laptop setups

Honest - Reliable - Affordable
Contact: Jim
01359 251946
07729 868669
email
info@completesolutions-it.co.uk
www.completesolutions-it.co.uk



Sweep 'n' Clean

HETAS Registered
Wood Burning Stove Installers
Qualified Chimney Sweeps
Bird Cows Fitted
Gutter Clearing
Driveway Power Washing
Fully Insured
FREE Site Survey



Email: contactus@sweepnclean.co.uk
Web: www.sweepnclean.co.uk
Office: 01359 232955

BROWN'S



SERVICE

**All Types of
Tree Surgery
Undertaken**

**Thinning Reductions
Deadwooding Felling
Storm Damage**

**All types of hedges, shrubs
and fruit trees pruned.**

**Seasoned logs and
woodchip mulch delivered**

**For a Free Quote ring
01359 259149
Mobile 07881 816761**

**Chainsaw Certificate
City & Guilds Qualified
Public Liability Insurance**



ON HAVING GIVEN UP CRICKET

Extending the theme of Laskey's poem, 'alert in the heavenly deep, beyond the boundary of sleep,' one might imagine that there is a pitch that needs rolling so that the angels can trust the bounce playing back. And so it was, on a Saturday morning in August, that the old roller coaxed once again into life by Richard with his soothing, persistent words of encouragement, made its final trip around the boundary. Nobody can quite pin a date on when she arrived, but the considered opinion on that Saturday was that it must have been shortly after Messrs Watt and Boulton conceived of the latent power stored in steam. It was a time when things were measured differently with the worlds of metrology and cricket colliding to give us the chain-length that she had to rumble along, ponderously smoothing ripples of turf. She had done her duty, and passed the baton to the lighter, modern replacement with her new-fangled 'power steering' and working alternator.

The unseasonal weather put paid to a number of matches. All the League Teams find themselves heading into the twilight of the season in the mid-table hinterland, so the Club turned to fun games.

Ethan Dobing eschews all popular philosophy around cricket being a game of the feet and models himself, instead, around Vitruvian Man. August saw him break the barrier of 50 finally – despatching the local constabulary to all parts with the view of 'if it's in my arc, it goes'. Walsham, wisely, ensured a close-run match against the Police landed on the side of the law in the end.

Another disciple of Dobing, Ashley Forbes, spends a considerable amount of time slaying bowling. Reunited with alumnus, the scuttling Steve Owston, Forbes scored a Walsham Wonder of 128*, a third Sunday hundred, in the win against league-leaders Waldringfield. Forbes measures his power-output on the Gutenberg–Richter scale.

For the Juniors, the annual Old-Uns versus Young-Uns reversed the tide, with the parent's pulling the series back to 1-1. Jack Campbell will remember it as the first of many future dismissals of his father. Not coincidentally, a Ned is an Old English measure of 'talked-up runs'.

As a final thought, and as the young would say you can 'do the math', it turns out that the calculated speed required for a Mark Rothon slower-ball yorker to carve out its parabola is 115447 furlongs per fortnight.

James French

SEARCHING FOR WORDS

H	E	R
G	I	A
N	D	L

Starting with any letter and moving horizontally, vertically or diagonally, see how many words of three letters or more you can find, using each letter only once in each word.

There should be one nine letter word which might find you giving out the news.

Get 50 words and you are doing well.

TRADITIONALLY REARED FARM TURKEYS AVAILABLE FOR CHRISTMAS



Contact:-

John Farrow Priory Farm Rickingham Diss Norfolk
Telephone 01359-259221



**MCS ACREDITED WITH INSURANCE BACKED WARRANTY FOR YOUR
SOLAR PV & BATTERY STORAGE REQUIREMENTS**

NAPIT & FGAS REGISTERED ELECTRICIAN OFFERING THE FOLLOWING SERVICES:

- All Electrical including Certification
- EICR (Property Testing)
- Solar PV Panels
- Battery Storage
- Electric Heating
- Air Conditioning / Heat Pumps / Electric Heating



Professional & Reliable Service



Tel: 07377 153 954

Email: contact@lectec ltd.com

RESIDENTIAL - COMMERCIAL - INDUSTRIAL

SPORTS CLUB REPORT

Football

The first team started the new season in high spirits having won 5 of their friendly fixtures. They stated their league campaign away to Lakenheath. Ethan Garcia gave us the lead with a brilliantly taken goal. Lakenheath equalised immediately but at the start of the second half Garcia scored his second to give us the lead once more. However Poor discipline cost us dearly with both Charlie Norman and Harvey Hubbard being sent to the sin bin. Lakenheath took full advantage and scored three goals without reply to win the game 4-2. Walsham then hosted Mulbarton Wanderers. Mulbarton scored an early goal but goals from Scott Chaplin and Garcia gave us a half time lead. Jack Brame then went to the sin bin and although we didn't concede we lost all our cohesion and Mulbarton scored three late goals to deservedly win the game 4-2.

We then travelled to Dereham in the FA Cup and were well beaten on the night losing 4-1 with all the goals coming in the first half. Issac Moss was our goal-scorer. All our other sides are about to start their own seasons.

Home fixtures for September

First Team

Tue 12th v Brantham 7.45pm

Sat 16th v Mildenhall 3pm

Sat 30th v Kirkley & Pakefield 3pm

Under 23s

Sat 23rd v Old Newton United 3pm

Veterans

Sun 10th v Ipswich Vale

Exiles Reserves 2.30pm

Reserves

Sat 2nd v Sporting 87 A 2.30 pm

Sat 9th v Cockfield Reserves 2.30 pm

Sat 16th v Grundisburgh Reserves 2.30 pm

Sat 30th v Old Newton Reserves 2.30 pm

Under 18s

Thur 21st v Thetford Town 7.45pm

Thur 28th v Saffron Walden 7.45pm

Gordon Ross

A poster for a Flashdance 80's Band performance. The background features a vibrant sunburst pattern in shades of blue, yellow, and purple. At the top, the text 'WALSHAM-LE-WILLOWS SPORTS CLUB' is written in bold black letters, followed by 'presents' in a smaller, italicized font. In the center, a dark blue rectangular box contains the word 'Flashdance' in a large, stylized, cursive font, with '80's BAND' written below it in a bold, sans-serif font. At the bottom, the text 'Saturday 2nd September' is written in bold black letters, followed by 'Tickets £7 (in advance) or £10 (on the door)' and 'Doors open at 7.00pm'. Finally, 'Tickets available from Walsham Sports Club or JJ's Beautique' is written at the very bottom in bold black letters.

WALSHAM-LE-WILLOWS SPORTS CLUB
presents

Flashdance
80's BAND

Saturday 2nd September
Tickets £7 (in advance) or £10 (on the door)
Doors open at 7.00pm
Tickets available from Walsham Sports Club or JJ's Beautique

*Oil Fired Pressure Jet Boiler
Servicing & Plumbing*



**ANDY'S
OIL BOILER
SERVICES**

ANDY BACOS

 07775 751303

 andy.bacos@ntlworld.com

 Andy's Oil Boiler Services



J W Amps Ltd



**Offering service and repairs to all types and makes of
garden machinery, ATV's, compact tractors etc.**

Machinery bought and sold

**Over 15 years experience – factory trained by
Briggs & Stratton, Stihl, Westwood and Countax.**

Collection and delivery service available.

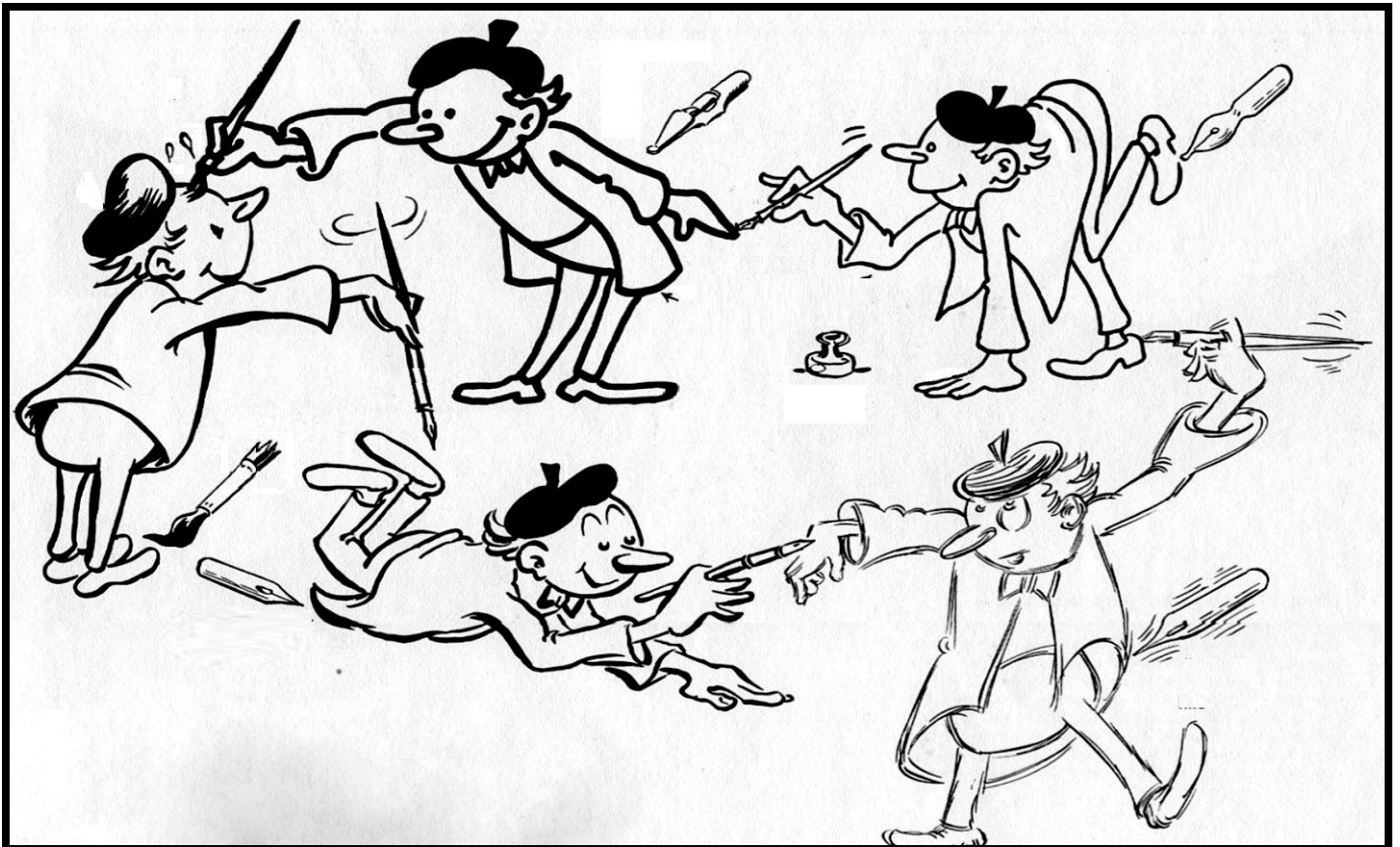


**Contact Simon
Mobile 07974 430366**



E-mail: simonamps@btinternet.com

SPOT THE DIFFERENCE



There are ten differences between these two pictures, see if you can find them all before these men stop drawing each other.



Pawfect Moments **Dog Walking & Petcare** (Badwell Ash and surrounding villages)



I am available to walk your dog/dogs, provide doggy day care, pet sitting and home visits for feeding, medication and toileting.

I appreciate that all pets are different and have a variety of needs, therefore I always start each relationship with a free home visit. I am fully insured and have attended a Canine First Aid course.

I look forward to hearing from you.....

Caroline Morris 07843 248 411

cdv_11@hotmail.com

Graeme Green **Electrical Services Ltd**

A local Electrician, qualified with 20
years experience.
Offering a friendly and reliable service.

Residential and Commercial.
Fully Insured.

Available for all of your jobs large
or small.

For a free quote call or email
Graeme.

Email: graemegreenelectrical@gmail.com
Call: 07950 335966



Special cakes
for
special celebrations

Jean Barker 01359 241135

www.amazingcakesbyjean.co.uk

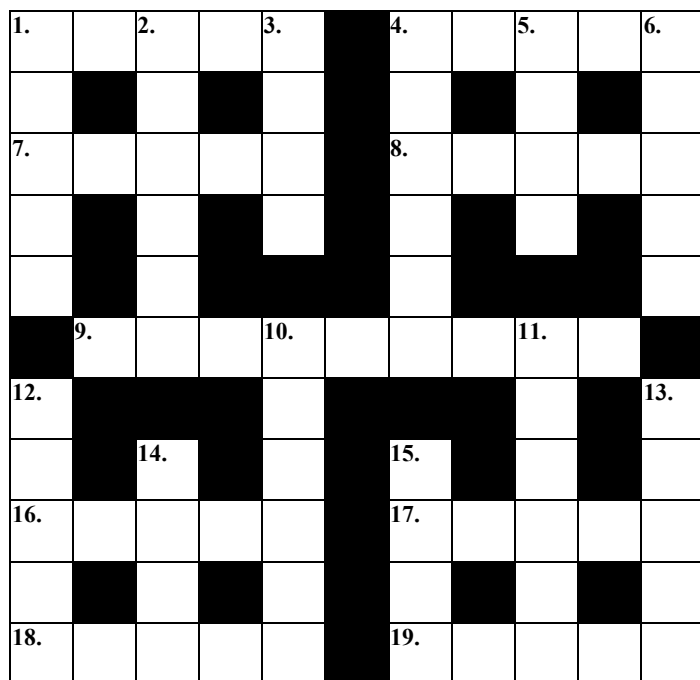
TONY FISHER **PLUMBING & PROPERTY MAINTENANCE**

24Hr Emergency Callout Burst, Leaks, Blockage, etc Bathroom/shower installation
Tanks/cylinders/radiators Tiling floors/ walls Painting & Decorating
General DIY jobs Garden maintenance

Tel: 01359 242556 Mobile 07758 327743

Reliable & friendly service

WALSHAM OBSERVER CROSSWORD



ACROSS

1. Now his team has a game to play. (5)
4. Position the bush. (5)
7. The messenger took part in a maiden voyage. (5)
8. Beat into a totem pole. (5)

9. Such housewives could date peers by arrangement. (9)

16. A divide on the Adriatic coast. (5)

17. Game played with the fireiron. (5)

18. Does this duck go down? (5)

19. Let it become a rank.(5)

DOWN

1. Every starter is found in what cereal?

2. Dan and I've made a forced entry. (6)

3. Plays with childish things. (4)

4. Does this craftsman dither? (6)

5. As I'm in the objective. (4)

6. The others are so into the alternatives. (5)

10. Historic alternative for the cleric. (6)

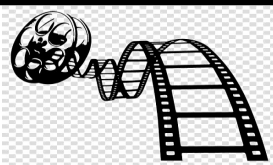
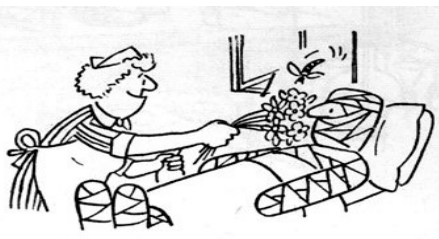
11. Just what was needed for the trip. (6)

12. Such a sense in an altered state. (5)

13. Present in a rhythmical manner. (5)

14. Happy to see the good boy. (4)

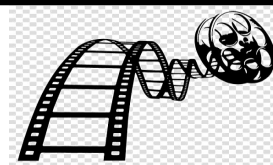
15. Such a disagreement in the despatch department. (4)



STANTON VILLAGE CINEMA

Friday 8th September at 7:30pm

ALLELUJAH



When a small geriatric hospital in Northern England is threatened with closure, the staff and patients rally together to try and save it. There might be a glimmer of hope with this task as the government consultant tasked with the final evaluation - "Colin" (Russell Tovey) has his estranged father "Joe" (David Bradley) in that self same facility.

Tickets on the door, adults £5.00—under 17's: £3.00
Tea/coffee and refreshments,

REGULAR

MONDAY

Community Lunch Village Hall
2nd Monday 12:45pm
Walking Football Sports Club
8:00pm till 9:00pm

TUESDAY

Walking Netball Sports Club
10:00am till 11:00am
Pilates Class Village Hall
1:30pm till 2:30pm
Walking Football Sports Club
2:00pm till 3:00pm

WEDNESDAY

Pilates Classes Village Hall
9:15am till 10:15am
Yoga Sports Club
10:00am till 11:30am
Positive Steps Sports Club
11:30am till 12:30pm
Wednesday Wanders Sports Club
11:30am till 12:30pm
Carpet Bowls Sports Club
2:30pm till 4:00pm
WI Meeting Priory Room
7:45pm Second Wed of the Month

EVENTS

THURSDAY

Coffee Shop Village Hall
10:30am till Noon
Post Office Van Village Hall
11:00am till Noon
Yoga Sports Club
1:15 pm till 2:15pm
Walking Football Sports Club
2:00pm till 3:00pm
Pétanque Sports Club
2.00pm till Bouled Out
Walking Netball Sports Club
6:00pm till 7:00pm
Community Yoga Priory Room
7:15 pm till 9:15pm

FRIDAY

C & A Coffee Shop Village Hall
9.00am till 11.00am
Cardio Tennis Sports Club
12noon till 1:00pm

SATURDAY

Pop-up Shop Village Hall
Last Saturday in the month

SUNDAY

WALSHAM OBSERVER SU-DOKU

2				8		7	9	
	3	5				1		
				1				4
6	8		7					
			1		6			
					4		3	1
3				9				
		6				5	2	
	4	2		7				3

For the uninitiated, the rules of Sudoku are very simple.

Each row, column and large square must contain the numbers 1 to 9 inclusive.

It's as simple as that, but you must apply logic to find which number goes where.

So, beginner or expert, happy hunting!

ALL THE ANSWERS

Page Bottom Quiz

1. Transylvania, 2. Holland, 3. Messerschmitt, 4. Ice skating, 5. The vocal cords,
6. West Point, 7. The magpie, 8. The Andes, 9. Roger, 10. Edward VI,
11. Lord's Cricket Ground, 12. Las Vegas, 13. The Stone of Scone, 14. New York,
15. Esau, 16. The jigsaw puzzle, 17. Bolivia, 18. Onions, 19. Newgate, 20. Aintree,
21. Bing Crosby and David Bowie, 22. Stalin, 23. The Colorado River, 24. Nine,
25. Goldilocks, 26. Aaron, 27. Five, 28. Norway, 29. Bob Dylan, 30. Spain,
31. Dijon, 32. War and Peace, 33. A white sauce, 34. The Hobbit, 35. Australia,
36. Architecture, 37. The Russian Revolution, 38. Turkey, 39. Eight, 40. Lead,
41. His hair, 42. Madrid, 43. Appleby, 44. 'Let there be light.'

Sudoku

2	1	4	5	8	3	7	9	6
9	3	5	4	6	7	1	8	2
7	6	8	9	1	2	3	5	4
6	8	1	7	3	9	2	4	5
4	2	3	1	5	6	8	7	9
5	7	9	8	2	4	6	3	1
3	5	7	2	9	1	4	6	8
1	9	6	3	4	8	5	2	7
8	4	2	6	7	5	9	1	3

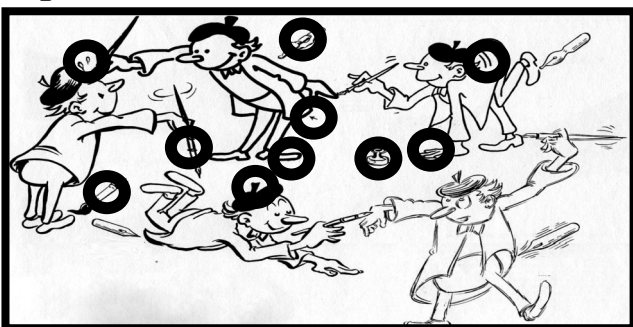
Crossword

W	H	I	S	T		P	L	A	N	T
H		N		O		O		I		H
E	N	V	O	Y		T	E	M	P	O
A		A		S		T		S		S
T		D				E				E
	D	E	S	P	E	R	A	T	E	
T				A				I		V
A		G		S		S		C		E
S	P	L	I	T		P	O	K	E	R
T		A		O		A		E		S
E	L	D	E	R		T	I	T	L	E

More or Less

1	4	5	3	2
3	5	4	2	1
2	1	3	5	4
4	3	2	1	5
5	2	1	4	3

Spot the Difference



Searching for Words

Aid	Ail	Ailed	Ain	Air
Are	Dare	Daring	Dial	Die
Dig	Din	Ding	Dinger	Dire
Ear	Era	Gear	Gin	Head
Heading	Heal	Healing	Hear	Hearing
Heir	Her	Herald	Hid	Hind
Hinge	Hire	Ire	Lad	Laid
Lair	Liar	Lid	Lie	Lier
Ling	Lira	Nigh	Nil	Rad
Raid	Rail	Read	Reading	Real
Reign	Rid	Ridge	Rig	Rind
Ring	Heralding (57)			

USEFUL TELEPHONE NUMBERS

Community Council Secretary
David Murray 01359-258646

Police
Suffolk Police 01473-613500
Stowmarket 01473-383400

Neighbourhood Watch

Surgeries
Ixworth 01359-230252
Stanton 01359-251192
Botesdale 01379-898295
Woolpit 01359-240298

Parish Council Chair
Richard Belson 01359-258868
richardbelson@btinternet.com
Parish Council Clerk
Kevin Boardley parishclerk@walsham-le-willows.org

Anglian Water
Emergencies (24hr) 08457-145145
Accounts 0800-919155

Eastern Electricity 0800-7838838

British Telecom
Customer Service 150
Line Faults 151

District Councillor
Richard Winch 01359-251760
07771-703668

County Councillor
Mrs Jessica Flemming 01449-711065

Suffolk County Council 03456-066067

Member of Parliament
Jo Churchill 0207-2198487

VILLAGE ORGANISATION CONTACTS

Allotments Group
Mel Wasley / Debbie Watson
walshamallotments@gmail.com

History Group
Frances Jenner 01359-259242
frances.jenner@hotmail.com

Horticultural Show
Debbie Watson 01359 259686
debbiewatson2916@gmail.com

Sports Club
Mike Powles 07379089890
mike.powles@btconnect.com

Walsham Wild Wood
Lorna MacKinnon 01359 259140
mackinnonlorna@gmail.com

Women's Institute
Pippa Baxter 01449781757
pippabaxter2@gmail.com

Community Yoga
Julia Dunncliffe 07980 476 140
dunncliffej@hotmail.com.



WALSHAM LE WILLOWS VILLAGE HALL

The Community Council committee
welcome you to the

MVH Coffee Shop
In the Garden and the Hall
Open under government guidelines for
village halls and COVID 19

Open every Thursday

From a time of 10.30am to 12.30pm
The Post Office van is there
From 11:00am till 12:00pm

**Come and enjoy a chat and
A cuppa and a bite
Just for 'a couple of quid.'**