

# WALSHAM OBSERVER



No longer compulsory, but do act with care and consideration toward others!  
Keep yourself and others around you safe!



**SEPTEMBER 2021**

# **Walsham-le-Willows Memorial Village Hall**

## **Current Hire Charges**

<b>USERS</b>	<b>ALL DAY</b>	<b>HOURLY</b>
<b>Walsham Villagers</b>	<b>£100</b>	<b>£10</b>
<b>Other Bookings</b>	<b>£125</b>	<b>£15</b>

**All Enquires & Bookings through  
01359 258646**



### **Automated External DEFfibrillator (AED)**

Located in the refurbished red telephone kiosk outside the Memorial Hall this AED has been registered with the East of England Ambulance Service and can be accessed via a digital keypad. The access code can be obtained by simply dialling 999 and asking the Ambulance Service. For reference purposes the location postcode is IP31 3AA.



# THE WALSHAM OBSERVER

SEPTEMBER 2021

No 630

Published and distributed by the Walsham Community Council.

**EDITOR** Mr I R Toulson  
01359-259646 iandmj@outlook.com

**PRINTED** by Gipping Press of Needham Market  
Tel: 01449 721599 email: enquiries@gippingpress.co.uk  
& **DISTRIBUTED BY** Volunteers

## ITEMS FOR PUBLICATION

These should be dropped by **FRIDAY 24 SEPTEMBER** into the box provided in Rolfes or emailed to the above address.

Advertisements should reach the  
Advertising Manager by **MONDAY 20 SEPTEMBER**

**ADVERTISING MANAGER** Cheryl Bartholomew  
01359-258349 walshamobserveradverts@gmail.com

**The Community Council takes no responsibility for the accuracy or otherwise of advertisements published in the Walsham Observer.**

## ADVERTISEMENT RATES

Quarter-page £60 per year £15 per month

Half-page £100 per year £20 per month

## WALSHAM-LE-WILLOWS COMMUNITY COUNCIL EXECUTIVE COMMITTEE

**CHAIR** Amanda Ellis  
01359-258646 ferretjim@msn.com

**SECRETARY** Tara Campbell  
01359-259519 taracampbell06@hotmail.co.uk

**TREASURER** Ian Bartholomew  
01359-258349 IBarth2@aol.com

**[www.walsham-le-willocks.org](http://www.walsham-le-willocks.org)**



# CONTENTS

Editorial	2	Observer Crossword	31
Neighbourhood Watch	3	From St Mary's Church	33
Searching for Words	3	Church Services	34
Village Hall Update	5	Walks Around Walsham	35
Is Your Home Safe?	7	70 Years on the Throne	37
Parish Annual Meeting	9	Observer Su-Doku	37
Royal British Legion	11	Wildlife in September	39
Walsham Sale Trail	11	Tractor Run	41
Women's Institute	13	More or Less	41
Village Quiz	13	Congregational Church	42
Horticultural Show	15	Eric Lucas WW2	43
Historic Churches Ride	17	Spot the Difference	44
Community Lunch	17	And So To Bed (Cricket)	45
Diary of Events	19	All the Answers	47
Parish Council Minutes	21		



## WHEN WALKING IN THE VILLAGE

**YOU NEED TO STAY 2 METRES  
APART TO SAVE LIVES NOW**



Please take the 2 meter distancing rules seriously. This protects everyone. It is a simple and very much appreciated courtesy and no one will take offence.

If you pass people with children, or elderly people who may not be as agile, please give some thought to how much easier it may be for you to cross the road to maintain a social distance of at least 2 metres from them.



# EDITORIAL

Our drift back to more normal times has taken a step forward this month with the very well organised Horticultural Show, a good response for the Sale Trail, and now being allowed to have 'three at a time' in Rolfes; I have no information - at the time of going to press - about the Gardens Weekend Tea Party, having been otherwise occupied on the day and preparing for an important engagement in Cambridge on the Tuesday, but I hope that all went well and that a report will come in for the October edition.

As for September there are further signs of 'normality' returning with the Annual **Churches Ride on Saturday 11th**. It's an excellent event and well worth being able to investigate the local churches - and those further afield! With church playing a part, large or small, in all our lives it might just be that you will attempt to raise a little money through sponsorship. The bottom line is that it gives you an opportunity to get some exercise.

On the same day - but in the afternoon - there is the **Meeting of the Parish** when you can meet those people who play an active part in village life. Who knows, you might even decide to get involved. Help is always needed.

Returning to the theme of exercise, you might be tempted to take part in an alternative form of exercise, to that of cycling, by taking part in the **Scything Day**, arranged by Walsham Wild Wood.

For those who feel that a little sedentary eating is required there is the **Community Lunch** on the Following Monday, but you'll need to book early, since complete normality has not broken out on this event. Even with some form of Social Distancing, it's a pleasant way to start the week.

Equally sedentary and thought provoking is another of the **History Group's** 'one off talks', this time on the subject of Crime and Law Enforcement given by Nick Amor. This event is again in the Village Hall on Wednesday 22nd September.

Looking a little further, there is the **Harvest Festival Service and Finger Lunch** at St Mary's on October 3rd, and later in the month, for the more competitive amongst us, the **Village Quiz** on October 22nd.

I hope very much that you will enjoy this 'special' edition of the Observer, and if you feel like helping it to be a 'good' and useful read, in the coming months, do send items, which might be of interest to the villagers, to me - my contact details can be found at the beginning of this - and every - edition.



**Evangelina:** Edmund, I thought that you were going to send an article, about moving into the village, to the Observer editor. I've sent in a poem and a favourite cake recipe.

**Edmund:** All in good time! I'm still working on it, together with a very short story.



# NEIGHBOURHOOD WATCH NEWS.



The **East Anglian Daily Times** has reported that Catalytic converter thefts have increased fourfold in Suffolk with thieves targeting Honda Jazz's and Toyota Prius and Auris models. Police data reveals there were 54 reports of catalytic converter thefts in 2019 but that has increased to 201 in 2020. Rise in thefts is due to the sky high price of rhodium, a component part, which is now at £14,000 per ounce.

To this end, Suffolk Constabulary is promoting a CAT marking event which is due to take place on Saturday 11<sup>th</sup> September between 1315hrs – 1515hrs at **Tread First**, Stowmarket Business Park, Ernest Nunn Rd., Stowmarket IP14 2ED. First come, first served.

**Suffolk Constabulary** has this month released real examples of inappropriate calls made to 999 and 101 in a bid to encourage people to think before they call and to head online instead.

From receiving requests for court telephone numbers, to asking advice regarding injured seals on a beach and queries regarding notes left by parcel couriers, many of which came through on the emergency number.

The Force launched its **Click Before You Call** campaign last year to encourage residents to report non emergency incidents online. As well as being able to report crimes online, the force's website holds a wealth of information and useful advice regarding who best to call with a query.

*David Murray*

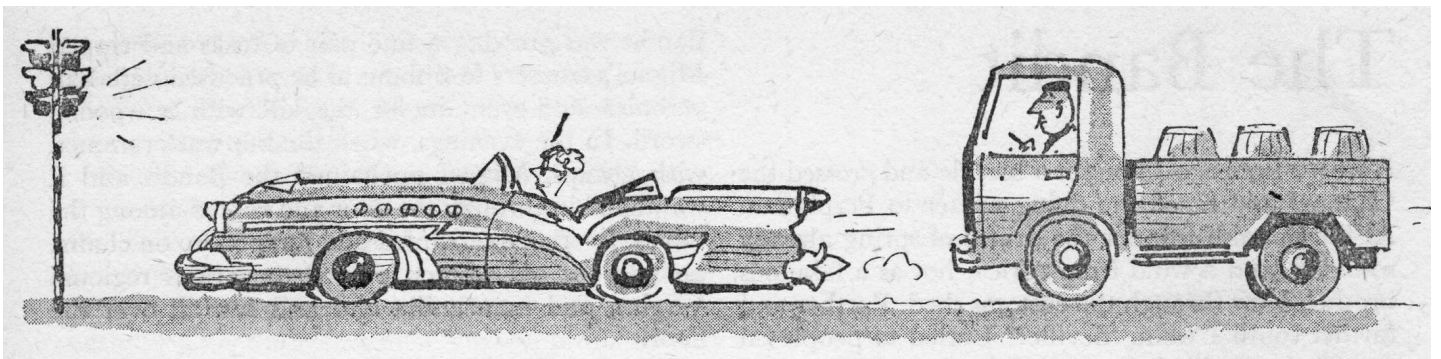
## SEARCHING FOR WORDS

M	E	T
E	R	I
T	A	C

Starting with any letter and moving horizontally, vertically or diagonally, see how many words of three letters or more you can find, using each letter only once in each word.

There should be one nine letter word for converting into a well known system of measurement.

Get 45 words and you are doing well.





01359 259 259

www.clarkesofwalsham.co.uk

**CLARKES**

*Products to the Trade and Retail*

BUILDING  
CLOTHING  
SHOOTING  
AGRICULTURAL



Clarkes of Walsham Limited

The Street - Walsham-le-Willows - Bury St Edmunds - IP11 3BA

Monday - Friday 7:30am - 5:15pm Saturday 8am - 4pm

Clarkes of Walsham at Jimmy's Farm

Pennington Hall Lane - Wherstead - Ipswich - IP9 2AR  
Open 7 Days a Week



## **M A Heating Services**



- \* Oil, Gas and LPG boiler servicing, replacements and repairs
- \* Repairs to central heating system faults i.e. pumps, programmers and cylinders
- \* Servicing and repairs to Rayburn, Aga Stanley and Esse
- \* Landlord's Certificates

**Telephone: 01379 783427**

**Wickham Gate, High Street, Gislingham, Suffolk, IP23 8JD**



# VILLAGE HALL UPDATE

How wonderful it is to see so many different events taking place in our village and people able to once again enjoy the community in which we all live. The hall is again a hub for the village, now hosting its regular weekly coffee shop, monthly community lunch and monthly Pop-Up Shop and operating the food bank, as well as a variety of classes and private functions.

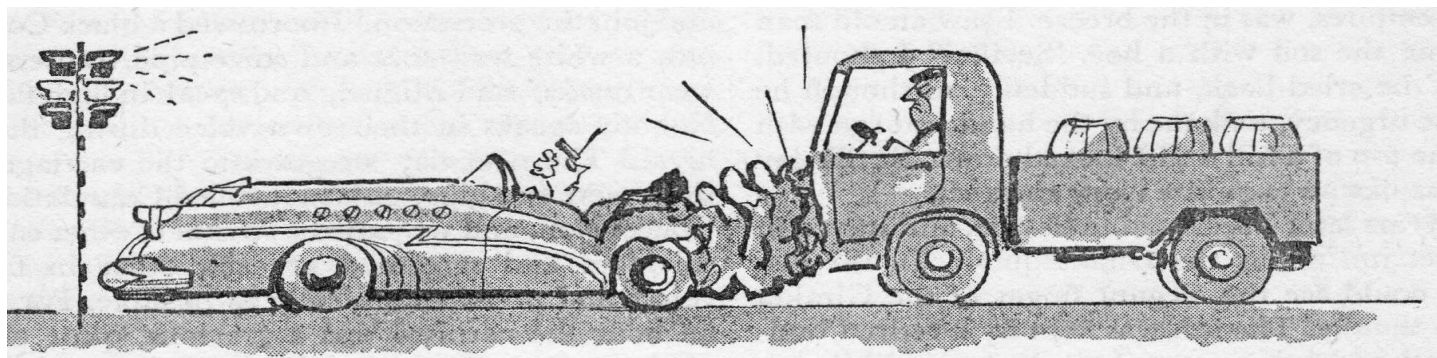
The Village Horticultural Show once again brought the village together and it was wonderful to see so many of you supporting a traditional village show. Hopefully many of you will come along to the Parish Annual Community Event in the Village Hall on the 11th of September 1p.m. till 5p.m. You will be able to find out about lots of village organisations and clubs, who will each have a representative and table of information, as well as meet and chat informally with your Parish Councillors while partaking of a free cup of tea or coffee and slice of cake, can't be bad.

The weekly Thursday morning coffee shop on the 23rd of September is a special one, held in partnership with the Walsham W.I. and will be a MacMillan coffee morning, with money raised going to MacMillan cancer support. So why not pop along and have some amazing cake and support a very worthwhile charity. There will also be a member of the Community Council there who is "Braving The Shave" for MacMillan.

Please note that the Pop-Up shop for September will be on Sunday the 26th, same time 10am- 12 noon. This month alongside the Pop-Up shop, the Walsham W.I will also have a table and be running a W.I Climate Cafe at the hall as part the W.I Great Big Green Week. Did you know the W.I are members of the Climate Coalition, highlighting issues relating to Climate Change and the environment? A great opportunity to grab a slice of classic home-made W.I cake and cup of tea or coffee, get information on environmental issues and maybe buy a Basic Life bag for £2 and help stop food wastage too.

The Halls updating and maintenance program continues. The hall now has Wi-Fi and the last of the back log of works are scheduled for the end of the month. The main hall wooden flooring is due to be sanded back and re-varnished, which will hopefully be complete over a weekend so as to minimise disruption to the events in the hall. So a fresh newly varnished floor for October and the return of village quiz on the 22nd of October.

*Amanda Ellis*



# CHIMNEY SWEEP



## ECO SWEEP

CHIMNEY SERVICES



- POWER SWEEP METHOD USED FOR A MORE THOROUGH CLEAN THAN A BRUSH
- FULLY INSURED
- INSURANCE RECOGNISED CERTIFICATES ISSUED ON EVERY SWEEP
- GOLD MASTER MEMBER OF GUILD OF MASTER CHIMNEY SWEEPS
- ALL CHIMNEYS, WOOD/MULTI FUEL BURNERS, AGA, BOILER FLUES SWEPT
- BIRD GUARDS FITTED

**TEL: (01359) 232335**

**EMAIL: ecosweep@live.com**

# N & S PEST CONTROL — SERVICES —

**RATS! MICE! RABBITS! MOLES! BIRDS! WASPS!  
FLIES! ANTS! SQUIRRELS! & MINK!**

All effectively controlled by

Norfolk & Suffolk Pest Control  
Chris Earith, 2 Orchard Lane,  
Pakenham, Nr. Bury St. Edmunds,  
Suffolk. IP31 2LQ

Phone: 01359 232538 Mobile: 07885 745446



## OVENCLEAN.

*The original oven cleaning specialists*

- ✓ Friendly, professional and reliable
- ✓ Completely safe, eco-friendly cleaning system
- ✓ No fumes, no mess, no bother
- ✓ Removes grease, fat and burnt on carbon deposits from:

- |              |              |          |
|--------------|--------------|----------|
| • Ovens      | • Filters    | • Hobs   |
| • Grills     | • BBQs       | • Ranges |
| • Extractors | • Microwaves | • AGAs   |

Call today to book your oven clean

**01359 259818**

[www.ovenclean.com](http://www.ovenclean.com)

## Elite Fencing and Landscaping

JUST 10 MINUTES AWAY FROM YOU.  
FENCING, GATES, DECKING, PATIOS,  
PERGOLAS, PATHS, BASES,  
TURFING, DEMOLITION,  
REGRAVELING DRIVEWAYS,  
GARDEN CLEARANCE,  
GARDEN PROJECTS & RESTORATION,  
REPAIRS, ODD JOBS & MORE!

ALL TYPES OF OUTDOOR WORK  
UNDERTAKEN - SMALL OR LARGE  
FOR FREE ESTIMATES CALL TREVOR  
ON 01359 221128 OR 07761651567

EMAIL

TREVOR@ELITE-FENCING.CO.UK  
WEB: WWW.ELITE-FENCING.CO.UK





# IS YOUR HOME SAFE FROM FIRE?



## Suffolk Fire and Rescue Service

**Reduce the risk of fire in your home in six simple steps.**

- 1. Protect your home with working smoke alarms.** Install smoke alarms on every floor and test them every week.
- 2. Take extra care in the kitchen.** Over 50% of accidental house fires start in the kitchen.
- 3. Check your electrics.** Check and maintain your electrical appliances.
- 4. Smoke safe (If you must smoke at all).** Put them right out!
- 5. Make sure that you sleep safe.** A bedtime safety routine can reduce the risk of fire whilst you are asleep.
- 6. Plan a safe escape.** Make sure that you know how to get out of your house in an emergency.

### Safer Home Visit

Please contact us if you:-

**Have concerns over fire safety in your home.**

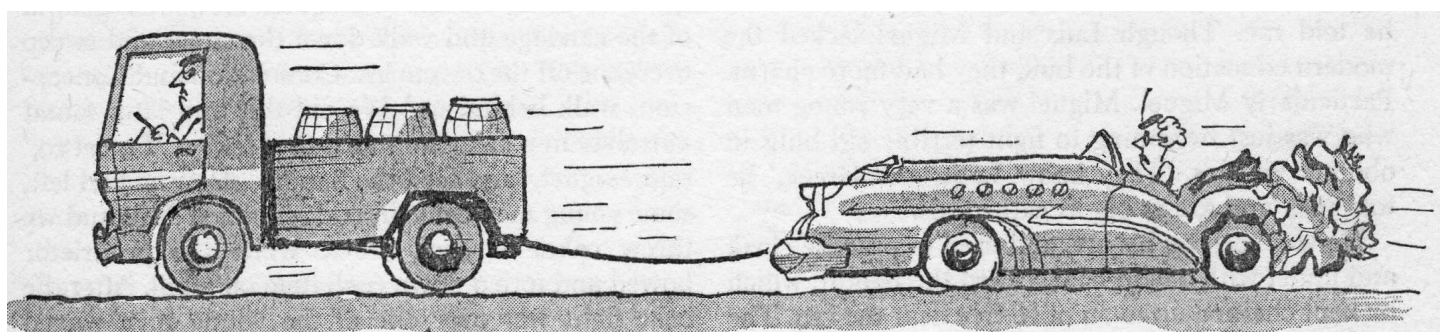
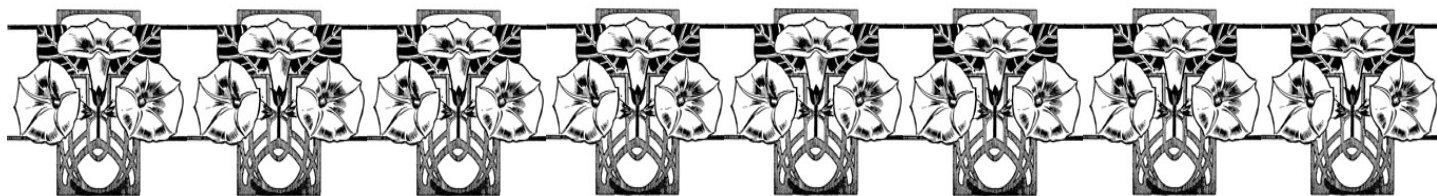
**Do not have working smoke alarms.**

**You cannot hear your alarms at home.**

A free visit by a specialist Prevention Practitioner, Community Fire Volunteer or Operational crew are available.

SFRS Prevention team and Firefighters are dedicated to saving lives by working with the community, discussing fire safety and offering advice to eliminate or reduce the risk of a fire occurring in the home. Free smoke alarms will be fitted if you do not have any.

**Call Fire Business Support 01473 260588**







# ***J W Amps Ltd***



**Offering service and repairs to all types and makes of garden machinery, ATV's, compact tractors etc.**

**Machinery bought and sold**

**Over 15 years experience – factory trained by Briggs & Stratton, Stihl, Westwood and Countax.**

**Collection and delivery service available.**



**Contact Simon**

**Mobile 07974 430366**



**E-mail: [simonamps@btinternet.com](mailto:simonamps@btinternet.com)**

## **WILLOWSERVE LTD**

### **Plumbing & Heating Services**

- ✓ Worcester Bosch Approved Installers with up to 12 Years Warranty on Worcester Bosh Boilers
- ✓ GASSAFE, OFTEC, C.I.P.H.E, CHECKATRADE, TRADING STANDARDS approved
- ✓ Replacement Boilers, Hot Water Cylinders, Underfloor Heating, Servicing, Repairs, General Plumbing, Bathrooms etc. FREE QUOTATIONS

**For a Professional Reliable Service**

**Tel: 01359 259886 Mobile: 07771 557937**  
**[willowserve\\_ltd@hotmail.com](mailto:willowserve_ltd@hotmail.com)**



# ANNUAL MEETING OF THE PARISH

**A Community Event at the Memorial Hall  
11<sup>th</sup> September 2021 - From 1pm until 5pm**

**New to the village?**

**Looking to meet people and make contacts?**

**Thinking about joining a village organisation?**

The Annual meeting of the Parish is an opportunity for people of the Parish to informally get together and meet and to find out more about what's going on and to make connections with other people and village organisations.

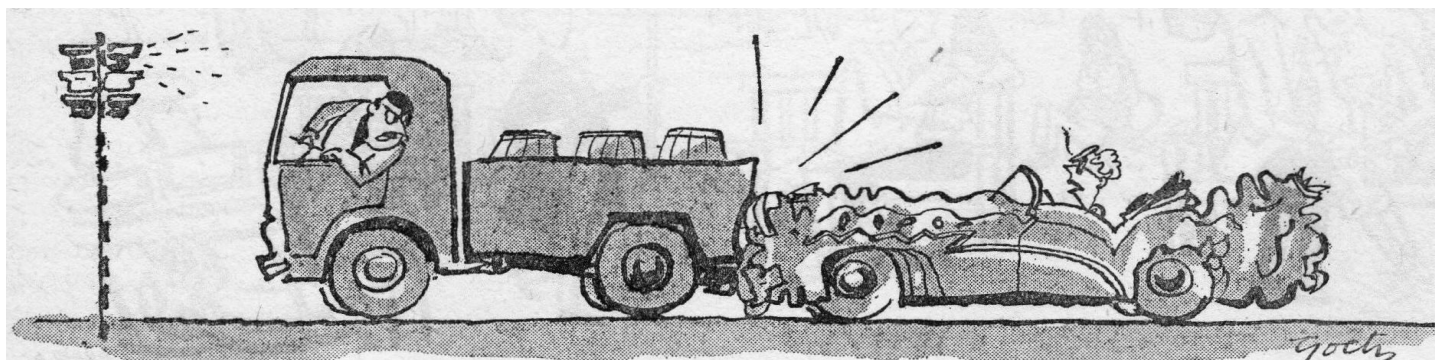
The Chair of the Parish Council will present an annual report and that's the formal bit done. Then you can grab a cup of tea and peruse tables that village organisations will take to promote their activities. A representative of each organisation will be present to update you on how they have continued, or not, through lockdown and what's planned over the coming year.

Come along to find out more about these and other village organisations and chat informally to your Parish Councillors.

The Parish Council will provide refreshments (tea and cake) free of charge from the Coffee shop run by the Memorial Hall, which is the hub for many other activities throughout the week.

Village organisations to be represented so far...

- |   |                                       |
|---|---------------------------------------|
| • Baby & Toddler Group                  | • Parish Council                      |
| • Community Council and Coffee Shop     | • Primary School                      |
| • Community Lunch                       | • Royal British Legion                |
| • Gardens Weekend Committee             | • Sports Club                         |
| • History Group                         | • St Mary's Church & Benefice         |
| • Horticultural Show                    | • The Observer                        |
| • Little Willows Pre-School (hopefully) | • Women's Institute                   |
| • Neighbourhood Plan                    | Others to be confirmed (Bell Ringers, |
| • Neighbourhood Watch                   | Parish Council, Pre-School, Town Farm |
| • Old Town Trust                        | Charity & Wildwood)                   |



**TONY FISHER**  
**PLUMBING & PROPERTY MAINTENANCE**

24Hr Emergency Callout    Burst, Leaks, Blockage, etc    Bathroom/shower installation  
Tanks/cylinders/radiators    Tiling floors/ walls    Painting & Decorating  
General DIY jobs    Garden maintenance

Tel: 01359 242556    Mobile 07758 327743

Reliable & friendly service



**Garnet House Interiors**

INTERIOR DESIGN, SOFT FURNISHINGS, FABRIC, CURTAIN POLES, WALLPAPER AND DESIGNER PAINTS

**CALL 07568 365694**

INFO@GARNETHOUSEDRAPES.CO.UK  
WWW.GARNETHOUSEDRAPES.CO.UK

**IS YOUR COMPUTER GIVING YOU HEADACHES?**

PC & Laptop Repair  
Virus Removal  
Diagnose Start up Problems  
Replace Hard Drives  
Replace Power Supplies (PC Only)  
New Laptop Screens  
New PC / Laptop setups

**Honest - Reliable - Affordable**

**Contact: Jim**

01359 251946

07729 868669

email

info@completesolutions-it.co.uk

www.completesolutions-it.co.uk





# STANTON AND DISTRICT BRANCH ROYAL BRITISH LEGION.



It was pleasing to be able to meet up with members after such a long break due to Covid 19 , especially as we welcomed three new members. After 18 years as treasurer, due to ill health Ron Baker has retired from this position he was thanked by members who wished him well and hoped he would be able to attend the monthly meetings.

The branch is grateful to Nigel land lord of the Cock Inn Stanton for his generous support that he has given to the branch over many years allowing us to meet for our monthly meetings and providing refreshments.

Our Annual Dinner this year will be held on Tuesday 5<sup>th</sup> October 19 00 hrs for 19 30 hrs, anyone interested in attending please contact me for the menu the cost is £15 95 per head.

We will be holding our Festival of Remembrance and Drumhead service in the Apex on Friday November 12<sup>th</sup> and will be led by the RAF Honington band by kind permission of the Station Commander, cost of tickets will be £12 with all profits being donated to the poppy appeal.

Our next meeting will be held Tuesday 14<sup>th</sup> September in the Cock Inn Stanton at 8pm.

*Hubby Frost (Branch Vice Chairman)*



## WALSHAM SALE TRAIL

What a successful day!

Thank you to all those that made the effort to come out on a drizzly Sunday morning for the village sale trail, it was an absolute delight to see the village buzzing with people on the lookout for a bargain, greeting friends and enjoying the banter of haggling!

The Village Hall was a hive of activity with stalls selling homemade crafts, beauty products as well as second hand treasures. A big thank you to all the volunteers at the village hall who kept the teas and coffees flowing, the cakes and sausage rolls dished up and the tables clean and tidy, a splendid team effort!

I hope that all the stall holders that participated made some pennies after they took the time to set out their pitches so wonderfully.

We were able to raise funds which are to be set aside for a Christmas event in the village, we hope to see Father Christmas make a visit to the children if he can fit us into his busy schedule! More details to follow.

Once again, thank you to all that contributed to this successful event, much appreciated.

*Tara Campbell*

## Little Willows Pre-School



**Experienced, qualified, dedicated staff, offering childcare  
and education to children aged 2 - 5 years**

**Open term time - Monday to Friday 8.45am - 2.45pm**

(Wrap Around care available - Breakfast Club 8am - 8.45 and

After School Club 2.45pm - 4.30 or 5.30pm)

**Ofsted inspection rating - GOOD**

**Please contact us for more information**

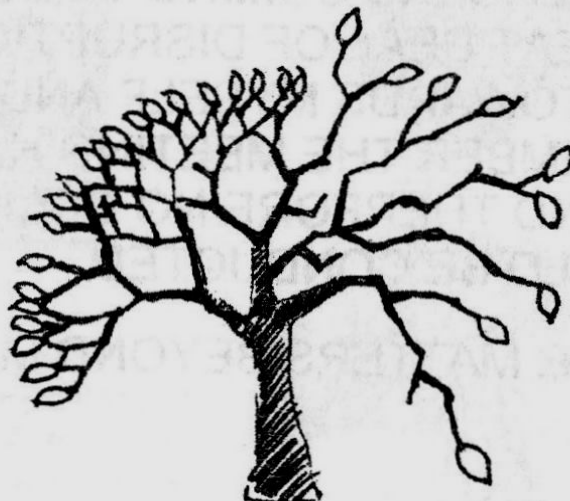
PRIORITY IS GIVEN TO FUNDED CHILDREN

Phone: 01359258702

email: [sarah.littlewillows@googlemail.com](mailto:sarah.littlewillows@googlemail.com) or [office.littlewillows@gmail.com](mailto:office.littlewillows@gmail.com)

Charity number:1050897

## J WHEELER TREE AND WOODLAND SERVICES



**Fully Qualified  
Arborist and  
Ecologist**

**Full list of  
services on  
reverse**

**Phone: 01379643197/07707674582**

**Email: [jwheelertrees@gmail.com](mailto:jwheelertrees@gmail.com)**



# WALSHAM LE WILLOWS AND DISTRICT WI



For our August meeting we were made welcome by The Walsham Wild Wood, a project that has created a piece of community woodland that made a perfect venue for us. We were guided round the network of grassy paths with a carpet of wild flowers waist high on either side. Over head it seemed as though a fly past had been specially arranged for us. First a flight of hedge sparrows, or perhaps starlings launched themselves skywards from the telegraph wires before returning back to form their precise line once again. Next a formation aerobatic flying display, worthy of the red arrows by a group of duck, who circled over head seemingly just for our entertainment. After delicious refreshments we were tempted to try creating either clay plaques with seed impressions or transforming a grey pebble into a rainbow of colours with glossy finish. Identifying all the wild flowers on a quiz sheet puzzled a number of us! We heard more about the progress of the Wild Wood project and plans for further developments. The WI donated trees survive and thrive. President Margaret Moore explained that we would like to gift another tree to mark our Fiftieth Anniversary and on the advice of the Wild Wood Team this would be an oak.

Members were asked to note a couple of dates: September 23<sup>rd</sup> the MacMillan Coffee morning to be run by the Community Council in the Memorial Village Hall. Offers of cakes and to help on behalf of the WI, please. On the 26<sup>th</sup> September at the Pop up Shop in the Village Hall there will be a WI Climate Café aiming to highlight the WI's membership of the 'Climate Coalition' during the national Big Green Week. This voices concern at the need for global action on climate change now.

With thanks to our hosts we closed our meeting as dusk approached.

*Jill Newell*



## VILLAGE QUIZ

**Friday 22 October**



It is time for the combined brains of Walsham to get together for the competition to compete for the prestigious Rowbotham Shield. Why not put a team together to take on the current holders and proudly display the trophy for the next year. You do not need to be brains of Britain to take part and the Question master promises that there will be a wide range of subjects covering all tastes and subjects. The main purpose is to have a fun evening with a bit of competition thrown in. All you need is a team of four. The entry fee is £5 per person. Refreshments will be provided during the interval and there will also be a bar serving beers, wine and soft drinks throughout the evening.

If you don't want to take part, why not just come along and support your favourites. Doors open at 7.30pm and the quiz will begin at 8.00pm. You can enter your team by emailing [wlwhub@outlook.com](mailto:wlwhub@outlook.com). If the reigning champs would return the cup that would be great, even better - enter a team to try and defend it!

*Tara Campbell*



# FLP Motors

*Your One Stop  
Friendly Garage*

- \* MOT's (Class 4 & 7 Up to 3500kg)
- \* MOT Repairs
- \* Diagnostics
- \* Servicing (Inc under 3 years old)
- \* Cambelts
- \* Brakes, Tyres & Exhausts
- \* 4 Wheel Laser Alignment (tracking)
- \* Clutches
- \* Air Conditioning Servicing
- \* All Repairs Carried Out

**Free Collection and return  
or courtesy car available**

**Call Vic: 01359 250671**

**Flpmotors.com**

**MOT's £35.00 with this advert (Class 4)**

**Unit 23a, Shepherds Grove Ind Est  
Stanton IP31 2AR**

# TIME FOR YOU™

DOMESTIC CLEANING

**Are you tired of cleaning?**



We have the  
right cleaner  
waiting  
to help  
you.

**Regular - Weekly - Cleaner**

**01359 258991**

Typically £13 per hour

[www.timeforyousuffolk.co.uk](http://www.timeforyousuffolk.co.uk)



## POLLARD & CO



**Builders of Integrity**

## TREVOR POLLARD

Millfield  
Wattisfield Road  
Walsham Le Willows  
Bury St Edmunds  
Suffolk  
IP31 3BD

Tel & Fax : 01359 258339

Mobile : 07768 124715

- New Houses • Extensions • Renovations
- Barn Conversions • Refurbishments

Email: [enquiries@pollardandco.co.uk](mailto:enquiries@pollardandco.co.uk)

# HORTICULTURAL SHOW

**Saturday 14<sup>th</sup> August 2021**

It was touch and go whether there would be a Show this year, and the number of entries was about a third fewer than in 2019, but considering most other villages had cancelled theirs, it didn't seem to matter, and it was brilliant to have a Show at all. The number of visitors in the afternoon was the same or higher than usual; it was marvellous to see the Memorial Hall filled with colourful flowers and happy people chatting over tea and delicious cakes

Pauline Batchelor won the Walsham Flower Trophy, the Domestic Class Cup, and the Overall Show Trophy. Gordon Scarfe won the Folkard Cup for vegetables, Judith Harlow won the Novice Shield, Lynn Allen won the Fothergill's Shield for her stunning gladioli while Barbara Murray won the WI cup for best item in Domestic classes for her lemon drizzle cake.

The Decorative Class cup was won by Mary Bradley for her entries which included a very special 'Thank You NHS' arrangement. James Turner won the Williamson Photographic cup. Cary Pitt-Roche and Leigh Hooper won the Hanging Basket competition, and the Ray Freeborn Sunflower cup had the highest number of entries ever, the winner was Gordon Scarfe with a height of 3.70m; a new record.

Special thanks this year to everyone who worked so hard to make it a success, setting up the Hall the day before, acting as stewards for the judges, baking such delicious cakes and serving the teas, and for donating the generous raffle prizes; many thanks too to those who came on the day to view the display. We are always on the lookout for helpers, so if you would like to be involved next year, do get in touch.

N.B. I have a small wooden tray which was left behind.

*Judith Harlow*

<b>Walsham Flower Trophy:</b>	1. Pauline Batchelor 2. Lynn Allen 3. Mary Bradley
<b>Folkard Cup for Vegetables</b>	1. Gordon Scarfe 2. Ruth Frost 3. John Dyer
<b>Domestic Class Cup</b>	1. Pauline Batchelor 2. Lynn Allen 3. Barbara Murray
<b>Decorative Class Cup</b>	1. Mary Bradley 2. Judith Harlow 3. Diana Turner
<b>Fothergill's Shield</b>	Lynn Allen
<b>W.I. Cup</b>	Barbara Murray
<b>Williamson Cup for Photography</b>	James Turner
<b>Hanging Basket Trophy</b>	C & L Hooper
<b>Budding Rose Cup</b>	Not awarded this year
<b>Ray Freeborn Sunflower Cup</b>	Gordon Scarfe
<b>Novice Shield</b>	Judith Harlow
<b>Overall Show Winner Award</b>	1. Pauline Batchelor 2. Lynn Allen 3. Judith Harlow

**Please visit the Walsham le Willows Website to see photos from the Show.**

**Next year's Show will be on Saturday 13<sup>th</sup> August 2022.**





*Pictures by Mick Mansfield CPAGB BPE1\**

## A COMMENT

I felt I must write to congratulate Judith Harlow and her team for bringing about the Walsham Flower Show. In spite of Covid and unhelpful weather conditions Walsham exhibitors rose to the occasion and produced a wonderful display.

It was the first time in months that many of us had got together and we were rewarded with a very happy afternoon and of course a delicious tea! I'm sure many will agree with me in sending thanks to Judith, her committee and helpers.

*Diana Martineau*



## THE MOBILE POST OFFICE

The Mobile Post Office will still be coming to the Village Hall Car Park on Tuesday & Thursday mornings from 11:00am till Noon till further notice.





# SUFFOLK HISTORIC CHURCHES TRUST



## Cycle Ride & Stride

The Trust celebrates 40 years of its annual Bike Ride on **Saturday 11<sup>th</sup> September**, between 9:00am and 5:00pm, when cyclists take to the roads to raise money for their local church (shared equally with the Trust). This is the main fundraising event of The Suffolk Historic Churches Trust which supports many of Suffolk's 640 churches, (Norfolk's Trust has over 800!) and the majority of them are open for the day of the ride. A list can be found in St Mary's together with Sponsor Forms.

It is such an enjoyable day. If you haven't done it before do join in this year and help to make the 40<sup>th</sup> anniversary a real success.

Further information can be found on [shct.org.uk](http://shct.org.uk)

*M.K. 259323*

## WALSHAM HISTORY GROUP

**Wednesday 22nd September at 7:30pm**

**Memorial Village Hall      £5.00**

Dr Nicholas Amor will be giving a talk on Crime and Law Enforcement in 14th century Suffolk, set against the background of the Great Famine, the Hundred Years War, the Black Death and the peasants Revolt. Dr Amor is the author of several publications on medieval Suffolk. He is the Chairperson of the Suffolk Institute of Archaeology and History, honorary research fellow at the University of Suffolk and senior visiting fellow at the University of Suffolk.

*Frances Jenner*

## COMMUNITY LUNCH

We hope you all enjoyed last month's lunch. I think we have all missed socialising over the last eighteen months and it was good to see you all and hear everyone chatting again while we were serving. Covid rules have been lifted now but we will still continue with waitress service. Numbers will be restricted to 20 at the moment.

The Memorial Village Hall will be open from 12.30pm on Monday 13<sup>th</sup> September 2021. Lunch this month will be Sausage, mash, peas, carrots and onion gravy served at 12.45pm. followed by Trifle. Tea and coffee will follow.

We look forward to seeing you there.

Please book a place, at £7.00, with Shirley on 01359 258532 by 5pm on Thursday 9<sup>th</sup> September.

*Shirley White*



## Mary Anstee-Parry

Tuition in traditional woodcarving and sculpture



Beginners welcome  
Custom-built workbenches  
Join friendly groups  
Classes on Tuesdays and Fridays  
Visit: [www.anstee-parry.com](http://www.anstee-parry.com)  
email: [anstee-parry@hotmail.com](mailto:anstee-parry@hotmail.com)

# could you foster?



**we urgently need  
foster carers  
in your area**



We can help you to provide a young person with a stable, secure home.

Call us on 0800 389 0143

Visit us at [www.nexusfostering.co.uk](http://www.nexusfostering.co.uk)

BROWN'S



SERVICE

## All Types of Tree Surgery Undertaken

**Thinning Reductions  
Deadwooding Felling  
Storm Damage**

**All types of hedges, shrubs  
and fruit trees pruned.**

**Seasoned logs and  
woodchip mulch delivered**

**For a Free Quote ring  
01359 259149  
Mobile 07881 816761**

**Chainsaw Certificate  
City & Guilds Qualified  
Public Liability Insurance**

## Natural Balance Reflexology and Massage

**Experienced reflexologist with  
advanced training in:**

- Pregnancy
- Menopause
- Anxiety and Mild Depression
- Reflexology Lymph Drainage
- Hot Stone Reflexology

**I also practise Full Body, Hot Stone,  
Indian Head and Baby Massage.**



**Please contact Zoie  
07968 903567  
[zoie.tuley@icloud.com](mailto:zoie.tuley@icloud.com)**

# DIARY OF EVENTS

## SEPTEMBER

Sat 11th Scythe Workshop  
Wild Wood 10:00am  
Churches Cycle Ride  
9:00am till 5:00pm  
Meeting of the Parish  
Village Hall 1pm - 5pm

Wed 8th WI Talk. Decorating  
recycled bottles & jars

Wed 22nd History Group Talk  
Village Hall 7:30pm

## OCTOBER

Sun 3rd Harvest Festival  
St Mary's 11:00am

Wed 13th WI Talk Sally Daniels  
My Wish Charity

Fri 22nd Village Quiz  
Village Hall 7:30pm

Sun 31st Halloween Pumpkins  
Wild Wood 4 to 7pm

## NOVEMBER

Wed 9th WI Christmas  
Workshop

## DECEMBER

Sat 4th Mini-Market & Tree  
Lighting St Mary's

Wed 8th WI 50th Anniversary  
St Mary's 7:00pm

**The above are dependent upon the Covid Restrictions which may be prevailing at the time or at the time when a final decision needs to be taken as to whether they should take place.**

**Please let me know if you would like to have an event included on this page.**



**W**ALSHAM *History Group*



## KEEPING THE PEACE IN MEDIEVAL SUFFOLK

*A talk by* DR. NICHOLAS AMOR

**Wednesday 22nd Sept 2021 at 7.30pm**

*Memorial Village Hall, Walsham-le-Willows.*

*All welcome. Cost £5.00.*



# Walsham Wildwood Scything workshop

## Saturday 11<sup>th</sup> September 10 – 3pm



Led by Butterfly Conservation  
Suffolk experts Julian Dowding and  
David Basham

Come along and learn the ancient  
craft of scything, to manage the  
wildflower meadows in the Wildwood  
for greater biodiversity  
Enjoy a hearty "Scythemans" lunch  
and healthy green gym exercise!

To book your place at £15 including lunch  
Contact: John Stebbing: [john@architectatwork.co.uk](mailto:john@architectatwork.co.uk)  
07831 325610

## HARVEST FESTIVAL at ST MARY'S



### 11:00am Sunday 3rd October

Followed by a **Bring and Share Finger Lunch**,  
a form for registering names is just inside the church

### Curiouser & Curiouser

Discovered in the contributions box at Rolfes was the following from the Bury Free Press column 100 Years Ago.

*'Back in August 1921, the name of Miss Nellie Ray should have been included among the soloists at the Congregational Sunday School anniversary.'*

Let's hope that matters were put right!

Nellie was the aunt of Dean Ellis, who must have sent in the snippet.



# PARISH COUNCIL OF WALSHAM-LE-WILLOWS MINUTES

of the meeting held on Wednesday 11<sup>th</sup> August 2021 commencing at 7.00 p.m. in the Memorial Hall.

*[Pending formal approval at the next meeting, these minutes have been informally approved by Parish Councillors as a true record. If any further corrections are required these will be minuted at the next meeting prior to formal approval]*

## **MEMBERS PRESENT - Cllrs Belson; Bartholomew; Roberts; Mecrow**

### **1 FIRST BUSINESS**

- 1.1 Apologies received from Cllrs Arbon and Kinnair both due to family commitments.
- 1.2 Apologies were accepted.
- 1.3 No declarations of pecuniary, local non-pecuniary interest(s) received
- 1.4 No requests for dispensation
- 1.5 Minutes of meeting held on 14<sup>th</sup> July 2021 were received and approved as true and accurate record.

### **2 REPORTS FOR INFORMATION - to receive written reports for information only:**

- Report from County Councillor Jessica Fleming was submitted and previously circulated.
- Report from District Councillor Richard Meyer was submitted and previously circulated.

District Cllr Meyer took questions: Cllr Belson asked on behalf of Cllr Kinnair if the Locality Budgets could be claimed for the Play Area. It was confirmed that the County and District Locality budgets were separate with the district budget having to be distributed by the end of the financial year. Both budgets are very limited and so the remaining amount needed for the Play Area would not be approved. Cllr Belson raised the suggestion of 'Community Badges', councillors felt that this could be a divisive initiative. Cllr Meyer also clarified the dates for the Energy Conference which were omitted in his report which are 21/22<sup>nd</sup> October. Cllr Meyer also asked if the information about the 'Welcome Back Fund' had been distributed. The Clerk had previously circulated this to Parish Councillors but was asked to forward to the Gardens Weekend Committee if this has not already been done.

### **3 PUBLIC OPEN FORUM**

No members of the public in attendance.



**Vegan Ready Meals by**  
**The Fairy Godmother**

- 100% dairy & meat free Vegan Dishes including Gluten Free options.
- Free samples and menus delivered to your door.
- Meals delivered chilled with heating instructions included.
  - Microwave and oven friendly.
  - Free delivery on orders over £10.
  - All meals priced at £3.95 each.
    - 5 Star EHO Rating.

***Order meals or samples by Friday evening  
for Monday delivery!***

**Contact us:** Tel – 01359 269210

**Email:** foxyfoods@outlook.com

**Facebook:** [www.facebook.com/fairygodmothervegan](http://www.facebook.com/fairygodmothervegan)

***Cash & Card Payments Accepted***



**Ordering your  
heating oil through  
CERTAS ENERGY  
can help  
YOUR SPORTS CLUB**



They will make a contribution to the Sports Club of  
£10 per 1000 litres or £5 per 500 litres

**Call 01603 885100 (sales team)  
or 01603 885236 (service team)**

Every order so far placed, has been competitively priced against other  
suppliers - why wouldn't you help yourself and us

**“All contributions gratefully received”  
says Ian Campbell (Treasurer)**



- 4 PLANNING APPLICATIONS TO BE CONSIDERED & PLANNING MATTERS** [to be brought to the attention of the council]
- 4.1 APPLICATION FOR PLANNING PERMISSION - DC/21/03989 Proposal:** Householder Planning Application - Erection of a single storey rear extension  
**Location:** The Old Four Ashes, Palmer Street, Walsham Le Willows, Suffolk IP31 3BZ **The Parish Council Supported This Application**
- 4.2 DISCHARGE OF CONDITION(S) TOWN AND COUNTRY PLANNING ACT 1990 Proposal:** Discharge of Conditions Application for DC/20/03436 - Condition 2 (Agreement of Materials), Condition 4 (Parking and Manoeuvring), Condition 5 (Cycle Storage) **Location:** Rookery Barn, Rookery Lane, Walsham Le Willows, Suffolk IP31 3BD
- 4.3 APPLICATION FOR PLANNING PERMISSION - DC/21/04162 Proposal:** Householder application - Erection of Greenhouse. **Location:** The Rookery, Wattisfield Road, Walsham Le Willows, Suffolk IP31 3BD **The Parish Council Made No Comment**
- 4.4 1352/17 Hedge replacement and tree planting at The Acorns –** Consider Cllr Mecrow’s observations and decide on any action to be taken. The expected replacement of the hedge ‘in the first planting season’ was discussed and Council asked the Clerk to make enquiries to clarify.
- 5 PLANNING OUTCOMES (decided by Mid Suffolk District Council, Planning)**
- 5.1 APPLICATION FOR PLANNING PERMISSION - DC/21/03191 Proposal:** Householder Planning Application - Erection of a two-storey side extension and raise ridge of roof to create first floor space (following demolition of single storey side extensions) **Location:** Gramercy, Town Way, The Street, Walsham Le Willows Suffolk IP31 3AZ **Permission Was Granted By MSDC**
- 5.2 DISCHARGE OF CONDITION(S) TOWN AND COUNTRY PLANNING ACT 1990**  
**Proposal:** Discharge of Conditions Application for DC/21/00899- Condition 4 (Biodiversity Enhancement Strategy), Condition 5 (Wildlife Sensitive Lighting Design Scheme), Condition 6 (Proposed Windows and Doors) and Condition 7 (Gates and Walls) **Location:** Sunnyside House, Finningham Road, Walsham Le Willows, Suffolk IP31 3BJ
- 5.3 APPLICATION FOR PLANNING PERMISSION - DC/21/02612 Proposal:** Planning Application - Change of use and conversion of redundant agricultural building to form garage, workshop and gym area to be used in connection with and ancillary to the existing residential barn conversion on site. **Location:** Barn At West Street Farm, Ixworth Road, Walsham Le Willows, Suffolk **Permission Granted By MSDC**
- 5.4 APPLICATION FOR PLANNING PERMISSION - DC/20/02434 Proposal:** Full Planning Application - Erection of 1no. two-storey dwelling including parking areas and landscaping **Location:** Land to Rear Of Holmwood, The

  
**botesdaledental**  
PRACTICE & IMPLANT CLINIC

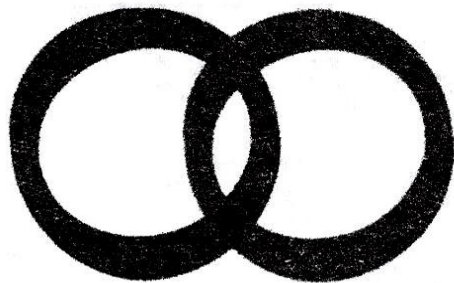
Your local,  
family run  
**Dental  
Practice**



Find us on  
[www.botesdaledental.co.uk](http://www.botesdaledental.co.uk)



Tel: 01379897176  
Email: [reception@botesdaledental.co.uk](mailto:reception@botesdaledental.co.uk)  
Botesdale Dental Practice, Holly Close,  
The Drift, Botesdale, Suffolk IP22 1DH



**ROBINS  
ROW**

*Insurance Brokers Since 1867*

*AN INDIVIDUAL SERVICE FOR ALL YOUR COMMERCIAL AND PERSONAL INSURANCE*

**SPECIALISING IN HIGH VALUE HOMES,  
COUNTRY HOUSES, LISTED AND THATCHED PROPERTIES  
AND ALL COMMERCIAL INSURANCE SOLUTIONS**

**TEL: (01787) 378205**

**EMAIL: [ADMIN@ROBINSROW.COM](mailto:ADMIN@ROBINSROW.COM)**

**HALL STREET, LONG MELFORD, SUDBURY CO10 9JB**

AUTHORISED AND REGULATED BY THE FINANCIAL CONDUCT AUTHORITY

Which is the only city to straddle two continents?

Street, Walsham Le Willows, Suffolk **Permission Refused By MSDC**

5.5 **APPLICATION FOR WORKS TO TREE(S) IN A CONSERVATION AREA - DC/21/03814**

**Proposal:** Application for works to trees in a Conservation Area - Pollarding of 1no Lime tree. **Location:** 2 Avenue Cottages, The Street, Walsham Le Willows, Suffolk IP31 3AZ **MSDC Raised No Objection**

6 **NEIGHBOURHOOD PLAN REPORTS** - The Clerk reported that the consultants had clarified that VAT would not be charged on their fees and that business addresses had been supplied on the submitted CV's. The funding of £9,900 had been received and this had been advised to all interested parties. Dates were in the diary with consultants and neighbourhood plan steering group for evenings of 13/14th September when the Memorial Hall and Priory Rooms had been booked for these two 'half day' meetings. The Clerk had handed over to the Chair of the Steering Group to organise with the consultants a brief pre-inception meeting to ascertain current position with regard to work already done so that best use can be made of the inception meeting days.

7 **PLAY AREA DEVELOPMENT REPORTS** The Clerk advised that the RoSPA report had been commissioned again for this September from PlaySafety after consultation with Cllr Kinnair it was thought that a new contract will not necessarily be in place by then. The Chair referred to the update circulated by Cllr Kinnair updating on progress with funding. Guided by the Community Infrastructure Levy (CIL) team on the funding process, a bid has been submitted for the new Younger Children's area. The cost for the equipment will be £13019, CIL funding will provide 75% (£9764.25) and as this is under £10k the CIL team can consider and authorise rather than be referred to full Cabinet for decision. A Community Grant application is also being pursued for the remaining £15k needed towards the total £51k cost.

8 **CLERK'S REPORTS**

8.1 **General Reserve Policy** – previously circulated – The Clerk proposed postponing this until a reply has been received from SALC on the guidelines. This was agreed.

8.2 **Proposed Changes to reserves - Transfer of reserves from Earmarked to General** Proposal as amended and previously circulated, draft reconciliation report, in line with general reserve policy, to reallocate the £15k CIL monies allocation against play area, £3k for closed churchyard and £8k for street lighting to a CIL reserve as is proper practice, thereby reducing the general reserve below the equivalent of 12 months precept and presenting the restricted CIL budget transparently in the monthly reconciliation ( as endorsed by SALC finance). This was unanimously approved.

8.3 **Reconciliation to 31<sup>st</sup> July 2021** – The ledger reconciles with the bank balances and was approved and signed by Cllr Bartholomew.

8.4 **Request for payments** - The summary of payments has been circulated in advance



# EMILY SMITH

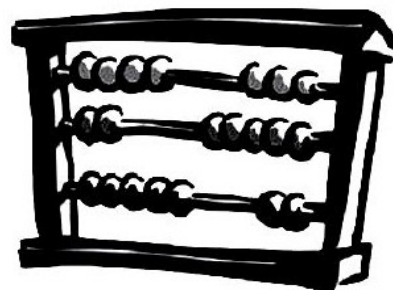
## Garden Design

Garden design - Border renovations - Planting plans  
Garden maintenance - Specialist horticultural advisory service

Visit [www.emilysmithgardendesign.co.uk](http://www.emilysmithgardendesign.co.uk)  
email [design@emilysmithgardendesign.co.uk](mailto:design@emilysmithgardendesign.co.uk)  
Call 07917 842071

# TWINN ACCOUNTANTS LTD

We offer an **efficient and professional** accountancy service at a very competitive rate.



- ✓ Annual accounts and tax returns for Sole Traders, Partnerships and Limited Companies
- ✓ Preparation and assistance with VAT returns
- ✓ Payroll Services
- ✓ Construction Industry returns
- ✓ Management Accounts
- ✓ Tax Planning
- ✓ Company Secretarial Services

Tel: 01284 787616

Fax: 01284 787183

Email: [info@twinnaccountants.co.uk](mailto:info@twinnaccountants.co.uk)

[www.twinnaccountants.com](http://www.twinnaccountants.com)

Suite 4, East Barton Barns,  
Great Barton, IP31 2QY.

**All accountants are not the same...we promise!**



## Ed Batram GARDEN SERVICES



Lawns – Paths – Patios – Borders – Fruit – Vegetables – Pruning  
Tree Work – Hedging – Log Splitting – Fencing – Brickwork – Paving  
Clearance – Design – Planting – Aftercare

**Certificated/Insured**

**FREE ESTIMATES** Tel: 01379 898203 (home) 07950923696 (mobile)

email: [edwardbatram@icloud.com](mailto:edwardbatram@icloud.com)

of the meeting, for approval and signing. The Clerk advised that if approved the payment to FedEx Express should not be submitted until the Clerk had heard from couriers. It is possible that this invoice is in error. Payments were all approved subject to the foregoing caveat. [Following the meeting the FedEx Payment was cancelled]

#	Payee	Amount	Description
1	FedEx Express <b>CROSS OUT</b>	£156.38	Brexit Surprise – Import Duties on SID Solar panel
2	Boston Bulb Company	£115.00	Bulbs for Closed Churchyard (autumn delivery)
3	CGM	£360.00	Play Area Grass Cutting x 3
4	Memorial Hall	£25.00	Hall Hire – PC meeting July
5	Kevin Boardley	£27.98	Lock and hasp - reimbursement
6	Browns Tree Services	£1,200.00	Clearance of pavement under hedge on The Causeway
7	Parish Council employee	£672.28	Wages
#	Payments In	Amount	Description
1	HMRC VTR (rec'd 12/04/2021 and not reported for minuting)	£4,728.64	VAT Rebate to 31 <sup>st</sup> March 2021
2	Groundworks Grant	£9,900.00	Neighbourhood Plan Basic Grant for work as planned with consultant to 31 <sup>st</sup> March 2022

- 8.5 **Fidelity Guarantee** – The Clerk asked that Councillors consider the need to increase as per guidelines (year end balances plus 50% of precept) as per previously circulated email. Councillors considered and resolved that no change would be made at this time as they considered sufficient checks and balances were in place and that year end balances would be much reduced by significant upcoming expenditure.
- 8.6 **Audit recommendation - Risk Register** – Previously circulated to be approved as first stage of development of the register. Cllr Bartholomew and the Clerk proposed that this was postponed to the next meeting to give more time for all councillors to consider. Cllr Belson raised an issue with the inclusion of one of the non-financial risks. It was decided that this could be included for consideration at the next meeting. Clerk to circulate.
- 8.7 **Annual Meeting of the Parish** – The Clerk reported at least 15 tables taken so far. It was agreed that the Parish Council would also have a table. It was

# *Upstairs Downstairs*

**A PREMIER CLEANING SERVICE**

**.... Bringing a sparkle into your home**

Regular Housework

Trained Personnel

Safe, Secure and Fully Insured

**No hidden administration charges**

**Tel: Gigi Wadham-Smith**

**on 07580314010**

**or email: [gigi@upstairsdownstairs.biz](mailto:gigi@upstairsdownstairs.biz)**

Rookery Barn Rookery Lane Walsham-le-Willows Suffolk IP31 3BD

Visit us at: [www.upstairsdownstairs.biz](http://www.upstairsdownstairs.biz)

## **Stuart Walker**



### **Decorating, Painting & Refurbishments**

**A locally based company offering an honest and reliable service.**

**Painting - Decorating— Refurbishments - Repairs.**

All work considered indoors & out! Fully Insured & free quotations provided. Please contact Stuart on Tel: 07711 606 464  
or Email: [stumal@hotmail.co.uk](mailto:stumal@hotmail.co.uk)



proposed that the Parish Councils should provide refreshments free of charge. This was unanimously agreed.

- 8.8 **Quarterly Bank Service Charge £18.00** – was not noted that this should have been reported with payments for July. Noted.
- 8.9 **Problem Reports SCC** – Cllr Mecrow advised he had not forgotten the need to pinpoint the fallen sign on Sumner Road so that this can be reported by the Clerk. Councillors were satisfied with the clearance of The Causeway and asked that the Parish Clerk contact the owners of the hedge to draw this to their attention. Cllr Meyer advised that it had been reported to him that a streetlight was out on Grove Park. The Clerk advised that anyone could report such issues using the Suffolk County Council Highways reporting tool at <https://highwaysreporting.suffolk.gov.uk/>. The Clerk agreed to wander down to Grove Park after dark to identify the lamp.
- 8.10 **Action Log** – The Clerk referred to the items on the previously circulated and updated action log (for items completed). Parish Council unanimously agreed that these items should be removed from the log. Councillors asked about the issues that were put on backburner throughout lockdown. The Clerk advised that these had been chased and no response had yet been received. The Clerk will keep chasing. Cllr Bartholomew raised the issue of the village sign and asked for feedback based on the photograph previously circulated of work completed by Amanda Ellis. He also advised that a new oak post will be needed. The Parish Council are very grateful to Amanda for getting this done and felt only that maybe the lettering could stand out a bit more maybe by using a different colour. It was unanimously agreed that the Clerk should advise that a new oak post can be sourced from Clarkes and any paint required could also be sourced and will be paid for by the Parish Council. It was noted that the bus shelter panels had still not been fitted. The Clerk was asked to contact a previous volunteer to see if he could do this work. Cllr Roberts agreed to pressure wash the frame.
- 8.11 **Annual Leave** – The Clerk raised the issue of the calculation of paid annual leave for a part time, variable hours post. Cllr Bartholomew suggested the first step was to update the Clerk's contract to more closely reflect the hours being worked. It was agreed that the Chair and the Clerk would address this when meeting to discuss appraisal.
- 9 **MATTERS ARISING** *[from previous meeting only where further decisions are required]*
- 9.1 **Stream** – The Clerk advised that from the seven organisations suggested by Suffolk Wildlife Trust, five had advised they do not undertake this sort of work and two had not replied. The Clerk had got one quote for the drawing up of a detailed rotational management plan over three or four years (previously circulated). This was noted and the Clerk was asked to seek another quote from the company that maintains the Play Area and also to contact the company that has already quoted with adjustments to the focus of the work.



## Shine n Clean

Residential and commercial window cleaning.  
A reliable window cleaning service using the latest  
pure water and reach & wash cleaning system,  
leaving glass sparkling clean for weeks.  
No mess, no smears and no harmful chemicals

01359 259376

email: [shinenclean@mail.com](mailto:shinenclean@mail.com)

*Oil Fired Pressure Jet Boiler  
Servicing & Plumbing*



**ANDY'S**  
OIL BOILER  
SERVICES

**ANDY BACOS**



07775 751303



[andy.bacos@ntlworld.com](mailto:andy.bacos@ntlworld.com)



Andy's Oil Boiler Services



## TJM Frames

Windows, Doors and  
Conservatories  
City & Guilds  
Trained Carpenter  
Installing windows since 1985

No showroom  
No gimmicks  
Quality craftsmanship  
at low prices

Rowan House Palmer Street Walsham-le-Willows IP31 3DA  
Telephone: 01359 259658

**10 OTHER ITEMS FOR DISCUSSION** [*Councillors can request that Chair or Clerk place items for discussion and decision on the agenda here*]

**10.1 Streetlighting upgrades** – the quotes previously circulated were considered and it was unanimously decided to authorise a final phase of the remaining 15 lamps. Clerk to action.

**10.2 Village tea party in Closed Churchyard** – The Clerk advised that it had been notified that the event will no longer go ahead in the closed churchyard due to a number of complaints received by the organisers. The event is to be held instead in the grounds of the Priory Room. The organiser has advised that both marquees will still be required. The Parish Council had no objection to this.

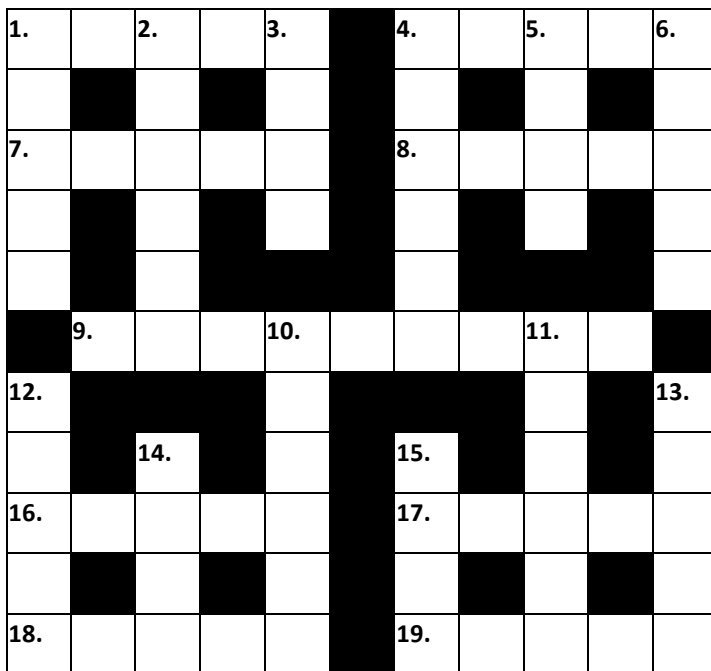
**11 CORRESPONDENCE** - none

**12 ANY OTHER BUSINESS/QUESTIONS TO THE CHAIRMAN**

*[No decisions can be made under AOB. Matters requiring decision must be placed on the agenda for the following meeting]*

Kevin Boardley, Proper Officer, Clerk to Walsham-le-Willows Parish Council  
Meeting Closed at 20:50

## WALSHAM OBSERVER CROSSWORD



**16.** Twist to sound the bell it seems. (5)

**17.** Small fruit might be in mucky surroundings. (5)

**18.** A lift in the Riviera is exciting. (5)

**19.** Remains in the bottle. (5)

**DOWN**

**1.** It's old hat for the fool in the exercise lesson. (5)

**2.** It's regular to find 'rope' in the small pair. (6)

**3.** Initially a large one by itself. (4)

**4.** She will help in male company. (6)

**5.** Thought that the aide was totally confused. (4)

**6.** Making a cleat is brilliant. (5)

**10.** It's not on to mix gin and lemon. (6)

**10.** It's perfect to have four in to eat. (6)

**12.** Let down by the trimmed flowers. (5)

**13.** Sounds like the storks met when returning in the vessel. (5)

**14.** Mickey's partner is vey small. (4)

**15.** Employed to change the dues. (4)

**ACROSS**

**1.** It's found atop a palace of the pope. (5)

**4.** Is it such a puzzle for the cereal? (5)

**7.** Found to have a kiss and cuddle by the bowl. (4)

**8.** It's perfect for me to hand out the cards. (5)

**9.** Just a walk by the sea. (9)



## ROB WHEELER POTTER



**WALSHAM LE WILLOWS**  
**TEL: 01359 258167**



George Hill Units  
Stanton, IP31 2AD  
Now taking appointments  
Tel; 07769 330828  
Or download the app.  
[Barberjos.nearcut.com](http://Barberjos.nearcut.com)

## Sweep 'n' Clean

HETAS Registered  
Wood Burning Stove Installers  
Qualified Chimney Sweeps  
Bird Cows Fitted  
Gutter Clearing  
Driveway Power Washing  
Fully Insured  
FREE Site Survey



Email: [contactus@sweepnclean.co.uk](mailto:contactus@sweepnclean.co.uk)  
Web: [www.sweepnclean.co.uk](http://www.sweepnclean.co.uk)  
Office: 01359 232955



**Special cakes  
for  
special celebrations**

*Jean Barker* 01359 241135

[www.amazingcakesbyjean.co.uk](http://www.amazingcakesbyjean.co.uk)

# FROM ST MARY'S CHURCH

On Saturday 11<sup>th</sup> September 2021 the Annual Sponsored Ride and Stride for churches and chapels will be taking place across all our English Counties. An event when cyclists and walkers will be out making money for the upkeep of their local churches. An event supported by the National Churches Trust and run by County Churches Trusts nationwide.

The idea started in Suffolk in 1981, and consistently Suffolk has headed the table of funds raised. The Ride and Stride is the main source of income for Suffolk Historic Churches Trust to enable it to make grants to churches and chapels of all denominations towards repair and restoration costs. The Trust has recently pledged a significant grant towards one of our churches within the Benefice.

Ride and Stride is run entirely by volunteers and is inter-denominational, with those participating sponsored for each place of worship visited between 9.00am and 5.00pm; or a one off donation. The money raised by each cyclist or walker is shared equally between the Trust and the place of worship nominated by the participant.

At the same time volunteers are stationed in the churches and chapels to welcome, sign forms and offer refreshments.

The Ride and Stride's sister event, the Pedal and Drive for vintage and classic cars, will also be held on the same day.

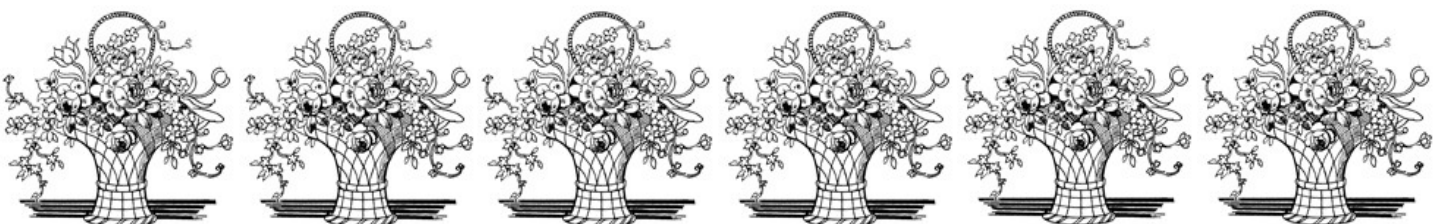
Throughout England the event raises money to restore churches and chapels of many Christian Denominations including the Church of England, Roman Catholic, Methodist, Baptist and Quaker. The money raised is a vital lifeline to many places of worship unable to afford the high cost of looking after buildings that are more often than not many hundreds of years old. Without such support, many such places of worship would be lost to our communities for ever.

Since 1981 over £35 million pounds has been raised nationwide. In 2020 26 churches and chapels were able to be removed from the Heritage at Risk Register. During the same year £1.7 million in grants were awarded to 260 churches and chapels for urgent repairs, new facilities, maintenance and project development.

The National Churches Trust, to which all the local County trusts owe their allegiance, has its roots going back as early as 1818. It is the only national, independent charity dedicated to promoting and supporting church buildings of historic, architectural and community value across the Country.

For further information regarding the Suffolk Historic Churches trust or this year's Ride and Stride event, please contact St Mary's Rector 07526271784.

*Rev. Philip Merry*



# SEPTEMBER CHURCH SERVICES

<b>5<sup>th</sup> September</b>	<b>14<sup>th</sup> after Trinity</b>	
8.00am	Holy Communion	Badwell Ash
9.30am	Holy Communion	Walsham
11.00am	Harvest Festival	Wattisfield
3.00pm	Harvest Festival	Westhorpe
<b>12<sup>th</sup> September</b>	<b>15<sup>th</sup> after Trinity</b>	
8.00am	Holy Communion	Walsham
11.00am	Harvest Festival and <b>Picnic</b>	Langham
<b>15<sup>th</sup> September</b>	<b>Wednesday</b>	
9.30am	Holy Communion	Walsham
<b>19<sup>th</sup> September</b>	<b>16<sup>th</sup> after Trinity</b>	
9.30am	Holy Communion	Walsham
11.00am	Harvest Festival	Finningham
<b>26<sup>th</sup> September</b>	<b>17<sup>th</sup> after Trinity</b>	
8.00am	Holy Communion	Walsham
11.00am	Harvest Festival	Badwell Ash
<b>3<sup>rd</sup> October</b>	<b>18<sup>th</sup> after Trinity</b>	
9.30am	Holy Communion	Westhorpe
11.00am	Harvest Songs of Praise	Walsham

## Inspirational Gardens Professionally Designed, Expertly Created

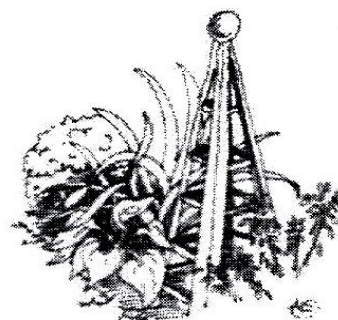
Want something fabulous but  
don't know where to start?

Contact me for a friendly,  
down to earth chat

**01359 77 2017**

[enquiries@plants-for-life.com](mailto:enquiries@plants-for-life.com)

  
**PLANTS FOR LIFE**  
HORTICULTURAL KNOWHOW



I'm qualified with a horticultural  
degree from Writtle College,  
have worked at the Beth  
Chatto Gardens and been  
designing gardens since 2002

[www.plants-for-life.com](http://www.plants-for-life.com)



# WALKS AROUND WALSHAM

## Boats and Planes

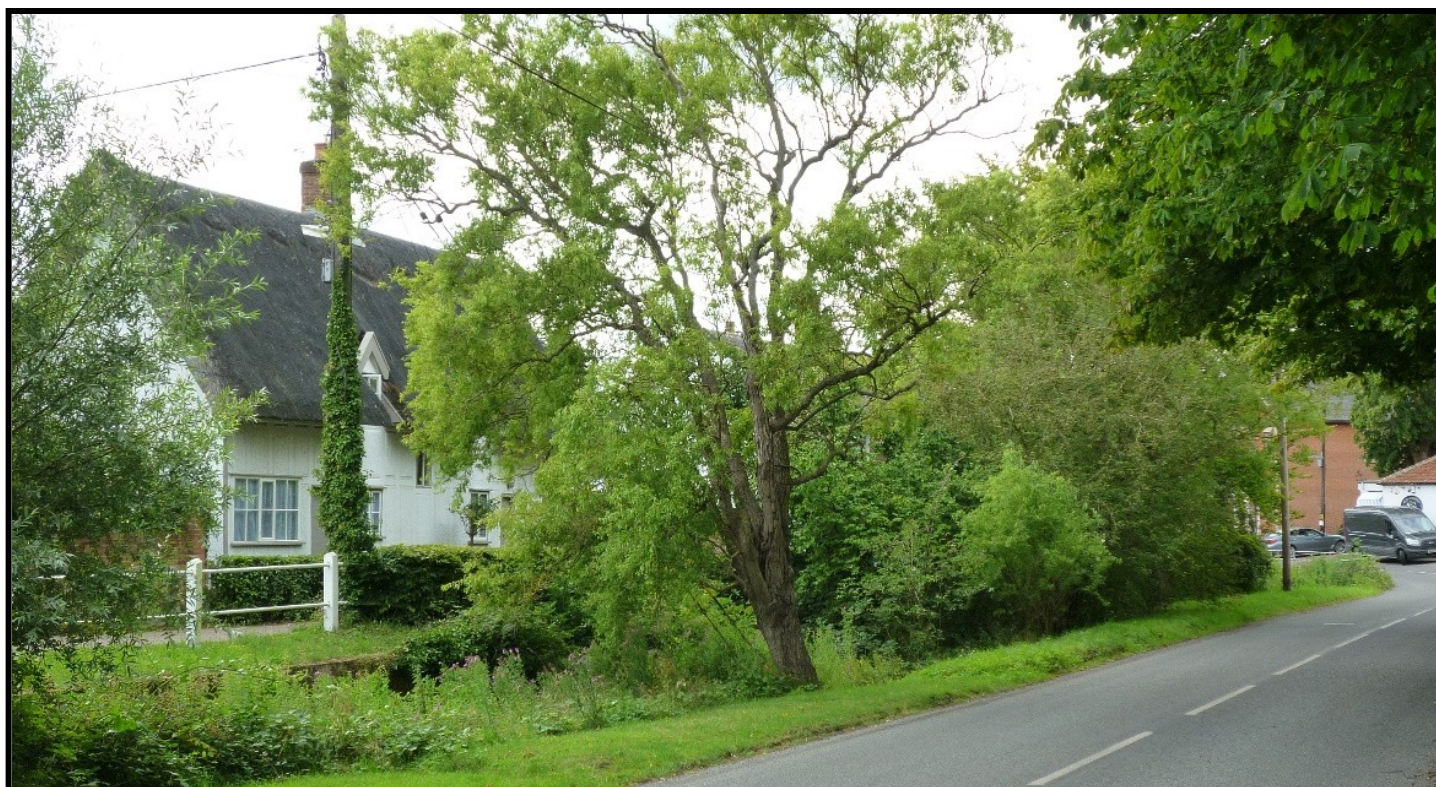
This, the final walk encompasses the most diverse history of Walsham and some of the most successful habitat enrichment areas. Starting at the village hall car park, turn left into The Street, turn left at the crossroads beside the church and follow the road over the bridge. Just beyond, on the right go through the gate into Gallant's Meadow. The willows that line the bank of the stream are spectacular, but they like it wet and some of them haven't survived the hot, dry summers we've had recently. The field is often grazed by sheep so keep your dogs on leads. Look out for barn owls in the evening. Through the gate at the other end of the field you emerge onto the Ixworth Road. Cross the road and take the path to the left, through the thicket that lines the stream. Turn right and cross the bridge. There is a field gate to your right, from which you can see a pond in the middle of the field surrounded by scrub. The natural amphitheatre shape of this field was made use of over 100 years ago when it was used for performing plays. Go through the two metal pedestrian gates. Head along the track until you come to a large pond. Known as Noah's Ark, this pond was dug about 40 years ago, and has an island in the middle of it, a sanctuary for wildlife. Although sadly covered in duckweed this year, it is often home to ducks, coots and dragonflies. Otters have been spied here as well as heron (and therefore fish), a sure sign that the ecosystem can be rich and varied.

Follow the path out of the wooded area and up the hill on the left-hand side of the hedge. This path was known as Felgate and was once a green lane, wide and probably gated as implied from the name. The hedge is old, over 600 years old. At the top cross the concrete road and follow the path through the edge of Ten Acre Wood. This wood was planted about 100 years ago and as well as ash, oak and hornbeam there are some wellingtonia trees. At the north east corner of the wood and beside a lookout tower you emerge onto an open and uncultivated field.

WWII saw a compulsory purchase of this land, it became Shepherd's Grove RAF station, used by Stirling bombers. In the 1950's the USAF moved in and it was used as their store for Thor nuclear capability Intermediate Range Ballistic Missiles. The launchpads still exist in the wood to the north of the field, the storage silos just to the south in the industrial area. It's hard to reconcile the potential devastation that could have been meted out from here with the beauty and tranquillity of the maturing woods, the wild flowers, the owls, the roe deer and so many walkers and their dogs blithely avoiding the puddles in this heavy clay land. Keep to the right side of the field and head towards the Summer Road. You will pass a crop of oats, now grown instead of rape because the nicotinoides used to preserve the rape seed are toxic to bees and other pollinators and were banned by the EU. At the road turn right, pass the construction offices and then take the first turning left into Fishponds Lane. This is an old green lane, hedged and ditched on both sides, how our main routes used to look. There's a break in the hedge beside another of those field ponds. Turn right and follow the track between the two fields. You will pass the Walsham wild wood on your left, it's worth a detour to

see the wild flowers and young trees, and even to have a seat and relax. Otherwise carry straight on down the hill, all the way to The Street emerging opposite Clarkes. Turn right and head through the village, back to the village hall.

*Alison Martin*



**Joe and Ruth welcome you to the Blue Boar, with an open fire and cosy seating area for the winter months.**

**All our produce is locally sourced from within a 12 mile radius, with meat from Rolfes, fresh fish from Wyken Provisions and fruit and veg from Marksman Produce of Bury. Alongside a comprehensive menu we run specials, including Pie and Pint Tuesday, Burger night Wednesday and Hot Dog night Thursday, with Over 60's Lunches on Tuesday, Wednesday and Thursday. Our Sunday Roast Dinners are renowned, and in addition we have a children's menu every day.**

**Open Tuesday-Saturday 12pm-Late, Sunday 12pm-9pm  
Food Served Tuesday-Saturday 12pm-9pm, Sunday 12pm-4pm**

**Please book to avoid disappointment**

**[www.theblueboarwalshamlewillows.co.uk](http://www.theblueboarwalshamlewillows.co.uk)**

**e-mail: [theblueboarwalsham@gmail.com](mailto:theblueboarwalsham@gmail.com)**

**Tel: 01359 259168**

# 70 YEARS ON THE THRONE

**Deserves a 'Platinum' jubilee celebration by us all!**

The Community Council have proposed that 2022 in June will be a truly momentous time for this country and ask the question what we can, collectively, do to celebrate that fact. The Council are very happy to coordinate the event but feel this is one of those times when all groups could come together to make it a very special occasion. Whether you are a monarchist or republican, I don't think anyone can disagree that Queen Elizabeth 11 has given us a period of service and security that is truly exceptional in what has, at times, been an often-troubled world. Emerging as we are from the pandemic and too much isolation, a communal activity of this nature is just what we need.

In drafting this appeal to the village community to come together in shaping the occasion, my mind goes some 50 years to when we put together a weekend to celebrate her Silver Jubilee. I had only been in the village a few years then but found myself both organising an 'It's a Knockout' for competing groups and taking part in a concert party featuring a variety of acts. It really was great fun not just with the finished article but even more with the build up which brought so many villagers together when friends were made that have lasted to this day. I am not sure that my own performance in the concert party that night, dressed in feminine attire that was removed to music, would be either repeatable or in the slightest bit appealing - at least that is the view of Mrs Campbell !

We will be contacting people with a view to forming a steering group to come up with both ideas and a plan on how we might proceed. Start thinking!

*Ian Campbell*



## WALSHAM OBSERVER SU-DOKU

		1				6		
5				7				9
			6		8			
		7	1		6	3		
		3				8		
		4	7		9	2		
			3		4			
2				1				5
		9				7		

For the uninitiated, the rules of So-Doku are very simple.

Each row, column and large square must contain the numbers 1 to 9 inclusive.

It's as simple as that, but you must apply logic to find which number goes where.

So, beginner or expert, happy hunting!



# Langham Clinic.

Holistic Beauty & Complementary Therapies

Specialised treatments performed by highly trained & experienced therapists

Sports Massage - Pilates - Manicure & Pedicure  
Electrolysis - Red Vein Treatment - Skin Tag Removal  
Acupuncture - Oncology Massage - LaStone Therapy  
Nutritional Medicine - Aromatherapy - Reflexology  
Waxing - Mindfulness - Hypnotherapy - CBT  
Dr. Hauschka Treatments (Holistic face & body treatments)

Everything possible at Langham Clinic is organic, sustainable & carbon neutral

[www.langhamclinic.co.uk](http://www.langhamclinic.co.uk)

Langham Grange, Stock Hill, Langham, IP31 3EE

**Tel: 01359 258 700**

The  
**Old Tea Room**  
Veterinary Surgery

For a professional caring service

**Tel: 01359 241 761**

Station Road, Elmswell,  
Bury St Edmunds IP30 9HA

A member of Stowe Veterinary Group

**[www.stovevets.co.uk](http://www.stovevets.co.uk)**



# WILDLIFE IN SEPTEMBER

As September begins we are seeing many changes to our wildlife, trees and hedgerows full of Rosehips, Sloes, Hawthorn berries and more providing the last glut of food before winter. Some of our visitors are now leaving for sunnier climates and some will be staying collecting food and preparing to survive the long winter months. One animal that does this is the Grey Squirrel. As the month progresses you will see them collecting food such as Acorns, hording and burying them away ready for when food is scarce. Did you know a Squirrel burying food it will know when it is being watched? When they know they are being watched either by other Grey's or by Magpies many Squirrels will pretend to bury their food, when the thief goes to collect its prize it will not be there, which will give the one with the food time to find a new hiding place! We have all heard of Grey and Red Squirrel's but have you heard of the Black Squirrel? The Black Squirrel has been in the UK for quite a few years, with the first being reported in 1912. Until recently the population have found it hard to establish a foothold, but they already make up 50% of the population in Cambridge. Black Squirrels are a genetic mutation of our Grey Squirrel, as well as their darker colour they are fitter, stronger and more aggressive. Our current populations of Squirrels are estimated to be around 2 million Grey, 150,000 Reds and 25,000 Black. You may see Squirrels on your bird feeders collecting seeds and nuts, they will also eat certain flowers, mushrooms, fungi and also bees and beetles! Did you know there are approximately 60 species of Dung Beetle in the UK, they are not the ones however that roll a ball of dung which we see on TV, instead they either live in the dung pile, these are called dwellers and those that live in the soil beneath it, and these are called tunnellers. It is possible to find Dung Beetles at work all year round although the vast majority are found in the spring, summer and autumn. Given the right conditions Dung Beetles can decimate a pile of horse poo or cow pat in a matter of days! Another interesting fact is these Beetles as well as others carry Mites on board. I only came across this when I found a Sexton Beetle the other day by my wildlife pond, it had all this little bugs running around its body, a bit intrigued I looked up what on earth they could be. These are mites that hitch a ride on many Beetles, they sit tight while the Beetle goes in search of food. When a Dung Beetle finds its prize it is not the dung the mites are after, it is the same with the Sexton Beetle that goes in search of carrion like a dead mouse, again it is not the carcass these mites are after. So what are they eating? When a beetle lands on its food the Mites jump off, they are eating the larvae of flies! This enables the Beetles to have more food to consume and they are given a chance of more eggs/young surviving without the maggots there. When the Mites have finished they hitch another ride, fascinating!

*Angie Nice*



**PETER GODDARD**

**Firewood**

Hardwood or softwood

Firewood & Kindling

Available all year

Tipper Delivery

01359 221287 07946 595126



**Animal Feed & Bedding**

**Pet Foods**

**Wild & Caged Bird Feed**

**Kindling, Logs, Charcoal**

**Compost**

**Flour, Free Range Eggs,**

**Porridge Oats, Local Honey & More!**

**Farmers Market every Saturday**

**Morning between 9.00 am – 1.00pm**

**Monday to Friday 8.30 am – 5.00 pm**

**Saturdays 8.30 am – 1.00 pm**

**01359 230277**

**[www.pakenhamwindmill.co.uk](http://www.pakenhamwindmill.co.uk)**

**[info@pakenhamwindmill.co.uk](mailto:info@pakenhamwindmill.co.uk)**

# w<sup>ell</sup> b<sup>o</sup>ans

*Your well being at our fingertips*

*Do you suffer with aches and pains? Fed up with taking pain killers?*

*Have you looked into the benefits of complementary therapies?\**

**Come and see us at Well Beans Complementary Therapy Practice**

**Just past the windmill going out of Ixworth.**

**Old Hall Farm, Thurston Road, Pakenham, IP31 2NG**

**Reflexology    Bowen Therapy (& Bowen children's clinic)**

**Seated acupressure massage**

**Bach flower remedies, Reiki & more**

**Tel: 01359 231652**

**[info@wellbeans.co.uk](mailto:info@wellbeans.co.uk)**

**Janette: 07841 430026**

**Jacky: 07725 172174**

**See [www.wellbeans.co.uk](http://www.wellbeans.co.uk) for more details of our therapies and prices**

**Mention this ad for 20% OFF first treatment**

*\*No change should be made to any medication; complementary therapies can help with many symptoms but are not a substitute for visiting your GP.*



# TRACTOR RUN

Tractors, tractors and still more  
the convoy, was it seventy four  
rumbling, chuntering  
along overgrown lanes  
over cattle grids and pot holes  
all in the day?

Bright new shiny ones,  
old rusty greasy ones,  
dainty little Fergusons,  
heavy throttled Fordsons,  
John Deere green ones,  
Massey Ferguson reds,  
McCormick International,  
and an ancient high ground clearance  
twin wheel rowcrop Farmall.

Unrestrained enthusiasts  
drivers old and not so,  
clean shaved, bushy bearded

red faced and ruddy weathered  
bare headed, old straw hatted,  
small pale or huge paw handed  
sunny smiles all guaranteed.  
Shorts and slacks all dressed at ease,  
skirts lifting in the breeze,  
lady drivers sunburned knees,  
family, friends with drinks and eats  
sit on straw baled trailers  
or in bucket scoop seats,  
little ones serious, holding tight  
to buckets for money, our purses out.

A dissonant, cacophony  
through Knettishall on Sunday  
toots, hoots and whistles  
even sirens as they go,  
a committed country coterie,  
a sort of joyous rural symphony.

*Rob Barber*



## MORE OR LESS

<input type="text"/>	>	<input type="text"/>	<	<input type="text"/>	4	<input type="text"/>
^		v			v	
<input type="text"/>		<input type="text"/>		<input type="text"/>	<input type="text"/>	<input type="text"/>
				^		
<input type="text"/>	<input type="text"/>	<input type="text"/>	<input type="text"/>	>	<input type="text"/>	
	v				^	
<input type="text"/>	<input type="text"/>	2	<input type="text"/>	<input type="text"/>	<input type="text"/>	
		^			v	
<input type="text"/>	<input type="text"/>	<input type="text"/>	<input type="text"/>	<input type="text"/>	3	

The numbers 1 to 5 should appear in  
each row and column.

The greater and less signs indicate the  
relative size of adjacent numbers.



### **Services for September**

We are open for worship each Sunday at 11.00 & 6.30

### **Harvest Thanksgiving.**

Although we will unfortunately not be holding our usual harvest supper this year, we still look forward to holding our Harvest Thanksgiving services on Sunday September 26<sup>th</sup> - why not come along as we seek to give thanks for all of God's goodness over another year. Please be assured of a warm welcome; it would be lovely to see you.

**Harvest and Common Grace.** It is true to say that we live in a nation and world that is far from Christian, little acknowledges God, but blasphemes his name and is in rebellion against his holy law; yet, astonishingly, we are so abundantly blessed whether we acknowledge God or not. Jesus said of God the Father, "for he maketh his sun to rise on the evil and on the good, and sendeth the rain on the just and the unjust" (Matthew 5:45) and "he is kind unto the unthankful and the evil" (Luke 6:35). The beauty, joy and order we all experience is thanks to common grace. Scripture highlights the abundance of good things God has provided in his creation. God cares for, waters, and provides grain (Psalm 65:9). The Lord provides the springs that give drink to every beast of the field, gives grass for the cattle, and plants for man to cultivate (Psalm 104:10-11). Creatures small and great look to God to give them food at the proper time (Psalm 136:25). God is good to all and has compassion on all he has made (Psalm 145:9). The Apostle Paul told those in Lystra that God had shown them kindness in giving them rain from heaven and crops in their season, giving them plentiful food and filling their hearts with joy (Acts 14:17). In 2 Corinthians 9:10 Paul points out that it is God that supplies seed to the sower and bread for food. God provides not only the crops but also the bakeries - the bakers who make the bread are part of God's common grace.

Common grace gives many blessings to mankind, but in this life only. For any hope in the life to come we need to experience God's Saving Grace. This harvest time, we would encourage you to come to give thanks for the many blessings of God's common grace but more importantly to receive God's greatest of all gifts - that of a Saviour, the Lord Jesus Christ. It is only by true and heartfelt faith and trust in Christ that we can fully experience the Grace of God, know forgiveness for sin and joy in his presence for evermore.

---

**Every good gift and every perfect gift is from above.** (James 1:17)

# **Walsham Congregational Church**

The Street, Walsham-le-Willows, Suffolk. IP31 3AZ  
Church Secretary (John Landymore) 01359 - 258986

# ERIC LUCAS WW2

## Continued From Last Month

While at RAF Honington in 1940 Eric completed 29 missions before arriving at No 7 Squadron RAF Oakington in December 1940, because of his experience as a gunner he was made an instructor training new air gunners and later volunteered for flying duties and posted this time to No 15 Squadron RAF Wyton, but sadly was killed on his very first mission back on flying duties, the Sterling Bomber came down in the village of Opmeer making a crater 8 metres deep.

Three days after the crash the Germans buried Wing Commander Dale with full military honours, and they also filled in the crash crater. Over a period of twenty three years from 1980 writing many letters and sending e mails I was convinced the other crew members were still buried in the crash site. In January 2003 I received information that the farm where the plane crashed was to be turned into industrial units and the crash site concreted over, complaints were lodged with the Dutch Authorities and later I received a letter stating that a Dutch recovery team would commence work on the 9<sup>th</sup> September 2003, and on the 18<sup>th</sup> October received correspondence that remains of the other six crew members had been recovered.

Pilot Officer Bird 2<sup>nd</sup> Pilot , Pilot Officer Campbell Navigator, SGT Smith 1<sup>st</sup> Wireless Operator/Air Gunner, SGT Nuttall 2<sup>nd</sup> Wireless Operator/ Air Gunner, SGT Plumb Flight Engineer, Sgt Eric Russell Lucas Air Gunner.

During WW2 the average number of missions for a tail gunner was 7 as this was considered the most dangerous position in the aircraft.

Ruth and Sharon came with me to Bergen in Holland for the funerals which were held 11<sup>th</sup> May 2004 63 years after they were killed.

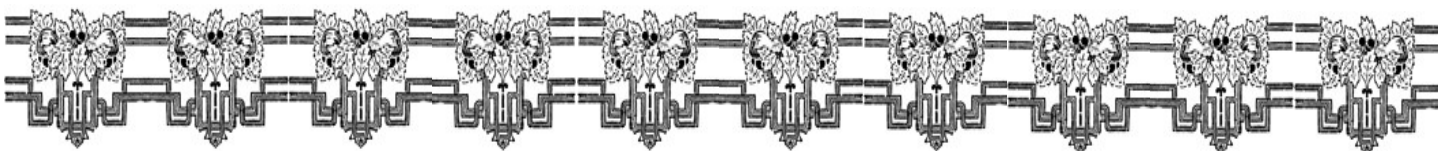
After the Royal Air Force had contacted the families they all agreed that the men flew together and died together and their remains should be placed in one coffin with six individual head stones placed in a line behind the grave.

Three of Eric's sisters had travelled from New Zealand for the funerals and afterwards at a reception they were presented with his signet ring which had been recovered from the crash site inside the ring were his initials ERL the navigators watch was also recovered it had stopped at 12 20.

We have returned to Bergen seven times since the funeral to place flowers at Eric's headstone and at the Memorial in Opmeer which features a propeller from the crashed aircraft in its design.

The family has given me a copy of Eric's flight log book and I have obtained a copy of the German Pilot's report of his attack on the Stirling Bomber, it has been translated for me , the RAF have also given me a video of the funerals. If anyone would like to view any of these they would be most welcome.

*Hubby Frost.*





# SPOT THE DIFFERENCE



*There are ten differences between these two pictures, see if you can find them all before everyone is served.*

Which sacred volcano last erupted in 1707?

## AND SO TO BED...

For those looking out from the Pavilion at Garboldisham on that late-August evening, waiting for their turn to bat, it was clear that the end of the season beckoned. Somewhere in the gloom was a game of cricket that was coming to an end, harbingering the end of another season – the first ‘real’ one since the pandemic.

At Walsham, cricketers know that the end is in sight when the goals go up again and the Sumner Road side of the ground becomes that little bit more difficult to clip the ball through midwicket for four along the ground. But, across the Club, there is much to look forward to in the months ahead.

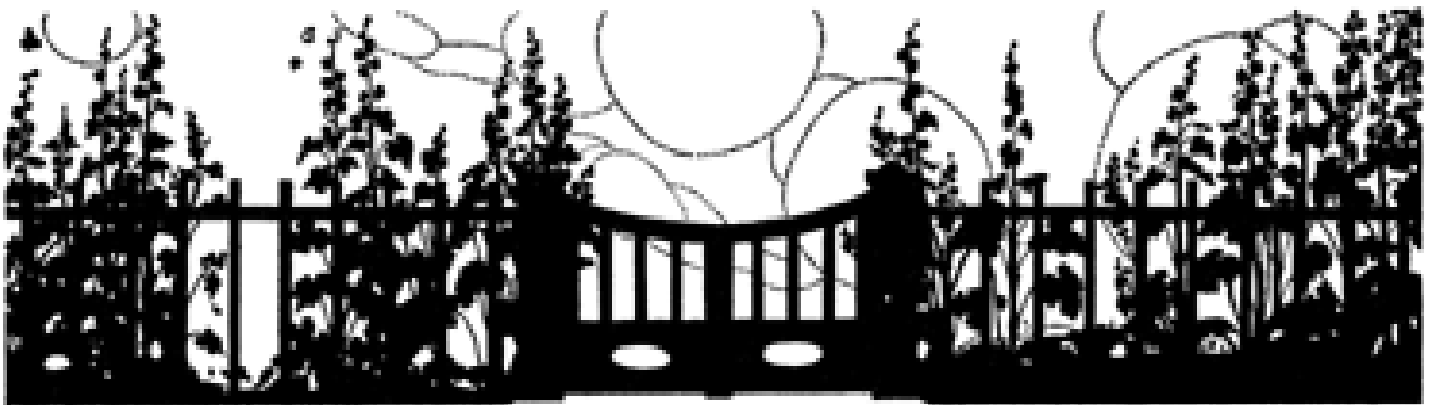
Both the Senior sides are ‘safe’ within their respective Divisions, playing out in August some thrilling matches. The Sunday XI in one of the best finishes to a match in some time, took the runaway league leaders, Melton St. Audry, to a 1 wicket finish. Showing nerve beyond their years, Tom Ridding and Sylvie Melvin, saw it over the line with the usual Sunday crowd gathered on the boundary. In truth, Walsham must have known it was their day by the manner in which Trevor Newman rolled back the years with a spectacular run out in the first innings, and Ned Campbell took a skier under the critique of John Wright on the bench.

Just the day before, the 1<sup>st</sup> XI had a similar end in their match against Mistley. Chasing a comparatively low total set by Walsham, Mistley were held in the final over to just the 7 runs, resulting in that rare occurrence of a tie. With the advent of live ball-by-ball scoring by Tim Gilbert this season, the constant checking of phones across Suffolk has become a regular Saturday afternoon past-time ([wlwcc.play-cricket.com](http://wlwcc.play-cricket.com)).

In the Juniors, both the U9s and U11s have had further successes in festival tournaments. Jack Campbell and Harriet French have both taken hat tricks; Albie Howe-Bryant hit 3 sixes in a row; Macey Leeks conquered her bowling demons and Tobias Macrae took a pivotal catch to see Walsham to 3<sup>rd</sup> place in the Woolpit Festival. Henry Jackson, aged 5, made his debut for the U9s – playing with a beautiful enjoyment of the game.

The final word, though, is reserved for all those that make those moments possible in the background. Our collective thanks should go to the triumvirate of Richard Land, John Wright and Rick Meyer for the toil and work on the pitch each week, preparing the way for those thrilling finishes.

*James French*



## GROUNDWORK & PLANT HIRE

- Mini Digger & Driver for Hire
- Block Paving & Patios
- Extension Bases
- Driveways & Pathways
- Drainage Work
- Footings & Oversites
- Gardens & Site Clearance

**C.S. CONTRACTORS**

**01284 724048 / 07720843577**

108 Horringer Road Bury St Edmunds  
IP33 2DP

[www.cs-contractors.co.uk](http://www.cs-contractors.co.uk)



## COMMUNITY COUNCIL FOOD BANK

Please donate long life foods and personal hygiene products to our collection point in St. Mary's Church (just inside the main doors on the right or in the porch if the doors are locked) or contact us to arrange a collection.

To help, get involved or to discuss your needs please contact Amanda on 01359 2 5 8 6 4 6 or email [wlwcommunitycouncil@outlook.com](mailto:wlwcommunitycouncil@outlook.com)



## REGULAR

### MONDAY

Community Lunch Village Hall

2nd Monday 12:45pm

Theatre Classes Village Hall

3:15pm till 6:15pm

### TUESDAY

Post Office Van Village Hall

11:00am till Noon

### WEDNESDAY

Positive Steps Village Hall

11:30am till 12:30pm

### THURSDAY

Coffee Shop Village Hall

10:30am till Noon

Post Office Van Village Hall

11:00am till Noon

## EVENTS

Yoga

Village Hall

7:15 pm till 9:15pm

### FRIDAY

### SATURDAY

Pop-up Shop

Village Hall

Last Saturday in the month

### SUNDAY



# ALL THE ANSWERS

## Page Bottom Quiz

1. Status Quo, 2. The Flying Pickets, 3. Mississippi, 4. Prokofiev, 5. Yellow,
6. Ginger McCain, 7. Michael Vaughan, 8. Shooting, 9. Polo, 10. Cricket,
11. Gibbs SR toothpaste, 12. Jennifer Grey, 13. GoldenEye, 14. Zulu, 15. Charlie Chaplin,
16. The ear, 17. The canopy, 18. Palaeontology, 19. Wind speed, 20. A nonagon, 21. Chicago,
22. Sweden, 23. Oxford, 24. Istanbul, 25. New Zealand, 26. Sugar, 27. Squid, 28. Tomato,
29. Prunes, 30. Chicory, 31. Rembrandt, 32. Albatross, 33. Penguin Books,
33. Angel of the North, 35. Andy Warhol, 36. Joseph Stalin, 37. Printing, 38. Brunel,
39. The Apache, 40. Amelia Earhart, 41. Adonis, 42. Bring Me Sunshine,
43. The New Forest, 44. Mount Fuji, 45. 2000 metres, 46. Arrows, 47. A horse,
48. The duodenum.

### Su-Doku

4	7	1	9	5	3	6	2	8
5	6	8	2	7	1	4	3	9
3	9	2	6	4	8	5	7	1
9	2	7	1	8	6	3	5	4
6	1	3	4	2	5	8	9	7
8	5	4	7	3	9	2	1	6
7	8	5	3	9	4	1	6	2
2	3	6	8	1	7	9	4	5
1	4	9	5	6	2	7	8	3

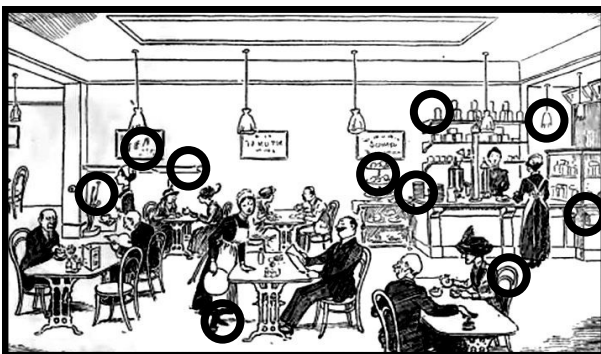
### Crossword

P	A	P	A	L		M	A	I	Z	E
A		R		O		A		D		C
S	P	O	O	N		I	D	E	A	L
S		P		E		D		A		A
E		E				E				T
	P	R	O	M	E	N	A	D	E	
L				I				I		S
O		M		N		U		V		T
W	R	I	N	G		S	L	I	M	E
E		N		L		E		N		M
R	A	I	S	E		D	R	E	G	S

### More or Less

3	2	5	4	1
4	1	3	2	5
5	4	1	3	2
1	3	2	5	4
2	5	4	1	3

### Spot the Difference



### Searching for Words

Acre	Air	Are	Arm	Art
Car	Care	Caret	Cart	Cat
Cater	Crate	Ear	Eat	Era
Erica	Eta	Irate	Ire	Item
Meat	Meer	Meet	Mere	Merit
Met	Metre	Metric	Rat	Rate
Ret	Rite	Tacit	Tar	Tare
Tart	Tea	Tear	Tee	Teem
Term	Tic	Tie	Tier	Tire
Trait	Treat	Tree	Trite	

**Metricate (50)**

## **USEFUL TELEPHONE NUMBERS**

<b>Community Council Secretary</b> <b>Tara Campbell</b>	<b>01359-259519</b>	<b>Surgeries</b> <b>Ixworth</b>	<b>01359-230252</b>
		<b>Stanton</b>	<b>01359-251192</b>
<b>Police</b> <b>Suffolk Police</b>	<b>01473-613500</b>	<b>Botesdale</b>	<b>01379-898295</b>
<b>Stowmarket</b>	<b>01473-383400</b>	<b>Woolpit</b>	<b>01359-240298</b>
<b>Neighbourhood Watch</b> <b>wlmhw@gmail.com</b>		<b>Parish Council Chair</b> <b>Richard Belson</b>	<b>01359-258868</b> <b>richardbelson@</b> <b>btinternet.com</b>
<b>David Murray</b>	<b>01359-258646</b>	<b>Parish Council Clerk</b> <b>Kevin Boardley</b>	<b>parishclerk@</b> <b>walsham-le-</b> <b>willows.org</b>
<b>Rev. Philip Merry</b>	<b>01359-258806</b> <b>07526-271784</b>	<b>District Councillor</b> <b>Richard Meyer</b>	<b>01359-251760</b> <b>07771-703668</b>
<b>Anglian Water</b> <b>Emergencies (24hr)</b>	<b>08457-145145</b>	<b>County Councillor</b> <b>Mrs Jessica Flemming</b>	<b>01449-711065</b>
<b>Accounts</b>	<b>0800-919155</b>	<b>Suffolk County Council</b>	<b>03456-066067</b>
<b>Eastern Electricity</b>	<b>0800-7838838</b>	<b>Member of Parliament</b> <b>Jo Churchill</b>	<b>0207-2198487</b>
<b>British Telecom</b> <b>Customer Service</b>	<b>150</b>		
<b>Line Faults</b>	<b>151</b>		

## **VILLAGE ORGANISATION CONTACTS**

**Allotments Group**  
**Alison Findlay 07704311468**  
**milcroft66@gmail.com**

**Women's Institute**  
**Pippa Baxter 01449781757**  
**pippabaxter2@gmail.com**

**History Group**  
**Frances Jenner 01359-259242**  
**frances.jenner@hotmail.com**

**Horticultural Show**  
**Judith Harlow 01359-258251**  
**Judith@gharlow.plus.com**

**Sports Club**  
**Mike Powles 07379089890**  
**mike.powles@btconnect.com**

**Walsham Wild Wood**  
**Lorna MacKinnon 259140**  
**mackinnonlorna@gmail.com**



# **WALSHAM LE WILLOWS VILLAGE HALL**

The Community Council committee  
welcome you to the

## **MVH Coffee Shop**

### **In the Garden and the Hall**

Open under government guidelines for  
village halls and COVID 19

### **Open every Thursday**

From a time of 10.30am to 12.00pm

Pricing remains the same  
for 2021 as 2020.

**Please come along, enjoy the  
company and get to  
use the mobile Post Office.**