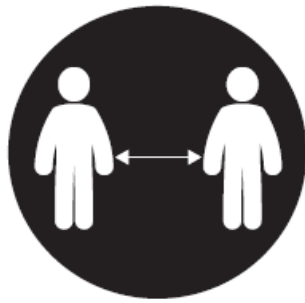


# WALSHAM OBSERVER



**JULY 2021**

# **Walsham-le-Willows Memorial Village Hall**

## **Current Hire Charges**

| <b>USERS</b>             | <b>ALL DAY</b> | <b>HOURLY</b> |
|--------------------------|----------------|---------------|
| <b>Walsham Villagers</b> | <b>£100</b>    | <b>£10</b>    |
| <b>Other Bookings</b>    | <b>£125</b>    | <b>£15</b>    |

**There is a £5 Covid surcharge per hire**

**All Enquires & Bookings through  
01359 258646**



### **Automated External DEFfibrillator (AED)**

Located in the refurbished red telephone kiosk outside the Memorial Hall this AED has been registered with the East of England Ambulance Service and can be accessed via a digital keypad. The access code can be obtained by simply dialling 999 and asking the Ambulance Service. For reference purposes the location postcode is IP31 3AA.



# THE WALSHAM OBSERVER

**JULY 2021**

**No 628**

Published and distributed by the Walsham Community Council.

**EDITOR** Mr I R Toulson  
01359-259646 iandmj@outlook.com

**PRINTED** by Gipping Press of Needham Market  
Tel: 01449 721599 email: enquiries@gippingpress.co.uk  
& **DISTRIBUTED BY** Volunteers

## **ITEMS FOR PUBLICATION**

These should be dropped by **FRIDAY 23 JULY** into the box provided in Rolfes or emailed to the above address.

Advertisements should reach the  
Advertising Manager by **MONDAY 19 JULY**

**ADVERTISING MANAGER** Cheryl Bartholomew  
01359-258349 walshamobserveradverts@gmail.com

**The Community Council takes no responsibility for the accuracy or otherwise of advertisements published in the Walsham Observer.**

## **ADVERTISEMENT RATES**

Quarter-page £60 per year £15 per month

Half-page £100 per year £20 per month

## **WALSHAM-LE-WILLOWS COMMUNITY COUNCIL** **EXECUTIVE COMMITTEE**

**CHAIR** Amanda Ellis  
01359-258646 ferretjim@msn.com

**SECRETARY** Tara Campbell  
01359-259519 taracampbell06@hotmail.co.uk

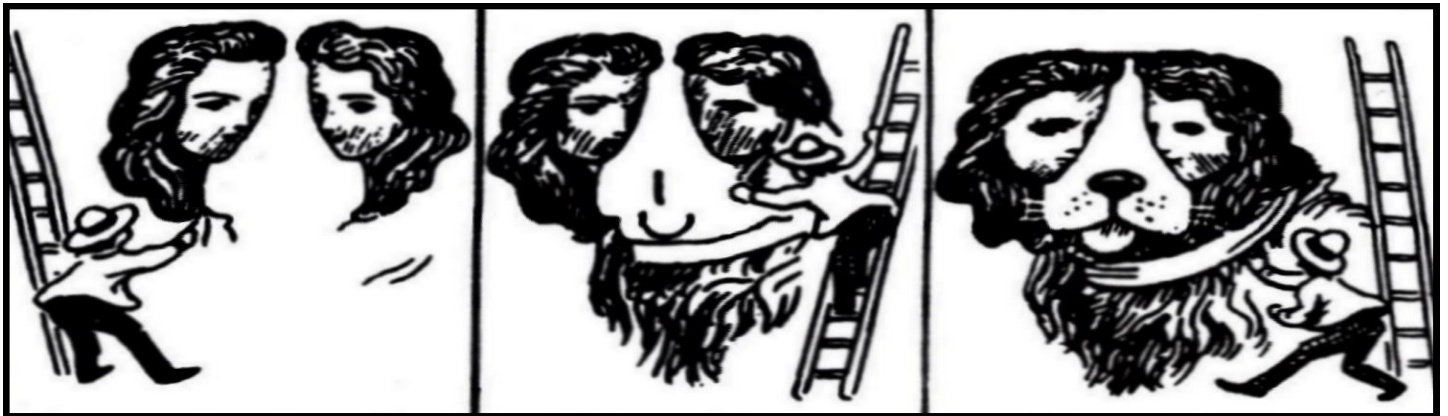
**TREASURER** Ian Bartholomew  
01359-258349 IBarth2@aol.com

**[www.walsham-le-willocks.org](http://www.walsham-le-willocks.org)**



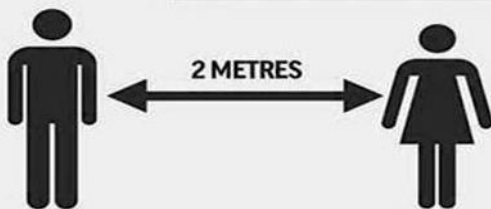
# CONTENTS

|                         |    |                            |    |
|-------------------------|----|----------------------------|----|
| Editorial               | 2  | The Zephyrs                | 35 |
| Neighbourhood Watch     | 3  | More or Less               | 35 |
| Village Hall Update     | 5  | Congregational Church      | 36 |
| Women's Institute       | 7  | Walks Around Walsham       | 37 |
| Community Lunch         | 7  | Two Sea Poems              | 39 |
| Eastern Angles          | 9  | Musical Theatre            | 41 |
| Walsham Sports Club CIO | 11 | Spot The Difference        | 42 |
| Walsham History Group   | 11 | Changes                    | 43 |
| The Basic Life Charity  | 13 | Space Filler MAZE          | 44 |
| Fund Raising Events     | 13 | Rain Stops Play            | 45 |
| Diary of Events         | 15 | Observer Su-Doku           | 46 |
| Parish Council Minutes  | 19 | The Invisible Cyclist      | 47 |
| Observer Crossword      | 29 | Regular Events             | 48 |
| Sporting Memories       | 31 | Community Council Accounts | 49 |
| Searching for Words     | 31 | All The Answers            | 51 |
| Wildlife in July        | 33 |                            |    |



## WHEN WALKING IN THE VILLAGE

**YOU NEED TO STAY 2 METRES  
APART TO SAVE LIVES NOW**



Please take the 2 meter distancing rules seriously. This protects everyone. It is a simple and very much appreciated courtesy and no one will take offence.

If you pass people with children, or elderly people who may not be as agile, please give some thought to how much easier it may be for you to cross the road to maintain a social distance of at least 2 metres from them.



# EDITORIAL

Courtesy of the Horticultural Society's 'pull-out' programme, this is the largest edition of the Observer that I have produced; so I must apologise to the deliverers for the extra load, but trust that you will find much to interest you.

As you work your way through the pages you will see that there quite a number of events taking place in the village during this month - and just into August. **Take a good look at pages 15 to 18** in order that you don't, unfortunately, miss any of these events.

As village organisations creak back into life, after the prolonged inactivity enforced by Covid restrictions, they might need to let members of the village know about them and their activities. You will note that there is a Diary of Events (**page 15**), a Regular Events diary (**page 48**) and a list of Village Organisation Contacts (**page 52**), if details are missing please send me the relevant information in order that I can keep them up to date. The slow relaxation of the Covid restrictions has enabled me to visit second-hand bookshops again, as maybe evidenced by the collection of cartoons and poems that may now appear as 'space fillers'; I trust that they might provide you with some enjoyment and also hold your attention for longer on some pages.

On Friday 25th June the Community Council held it's AGM in a Socially Distanced manner in the Village Hall. I have not included copies of the reports as most of the details are included in some of the articles which appear in this edition. For those of you who enjoy accounts, I have included the audited accounts of both the Village Hall and Community Council on pages 49 and 50.

I very much hope that you will enjoy this issue. If you would like to contribute to future editions do get in contact with me and help to keep it as a magazine by and for the community!

Here's hoping that by the time that you receive your next edition we shall be nearer to normal, following the delay to reaching that position by the increase in the Delta variant of the virus. I very much hope that we don't have to learn about Epsilon and even more of the Greek alphabet!!

I should have put a note about last month's cover picture of The Zephyrs, thankfully Albert Largent has provided an article about the group. This month's cover picture is of The Dagenham Girl Pipers, who were the main attraction of a village fete in 1953.



*The editor dreaming up next month's edition!!*

How many red balloons did Nina have?



# NEIGHBOURHOOD WATCH NEWS.



The National Fraud Intelligence Bureau (NFIB) produces monthly threat assessments outlining trends in fraud reporting and emerging frauds that are anticipated over the coming weeks. Increases in reporting have been seen in: Online shopping fraud Door to door sales fraud Phone fraud Investment fraud Rental fraud Computer viruses and malware Mandate fraud (where fraudsters obtain details of direct debits, standing orders or account transfer details and amend them to transfer money to other accounts) Delivery company branded phishing, with messages asking customers to click a link to either reschedule or pay for an underpaid delivery charge Phishing scams involving text message purporting to be from a bank stating that a new payee or new device has been added.

**Stay ahead of the fraudsters - emerging issues to look out for:**

**Festival/concert ticketing fraud** - There has been a huge demand for tickets to the festivals and concerts that have now been announced. Fraudsters are expected to try and take advantage of this demand over the coming months

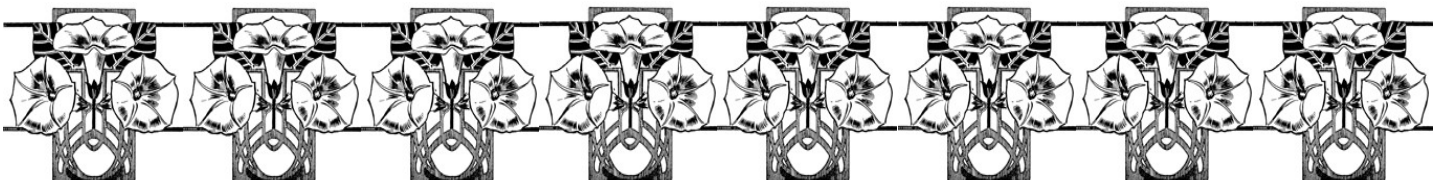
**Holiday fraud** - Following the government's announcement that some international travel can resume, low-cost private testing systems offering Covid testing for holidaymakers are likely to be overwhelmed by the sheer demand. Fraudsters may look to take advantage of this demand by purporting to offer reasonably priced tests to holidaymakers

**Post-vaccine survey scams** - People are being contacted via email and/or text message after receiving the COVID19 vaccine to participate in a fraudulent post-vaccine survey with the promise of a prize or cash at the end. Their credit card information is requested, and they are charged for the shipping and handling fees, but never receive the promised prize. Although the victims appear to be based in the US at present, it is likely that this sort of fraud will be attempted in the UK

**End of furlough schemes** - It is highly likely that following the end of the furlough scheme in September there will be an increase in demand for short term loans. Fraudsters are likely to try and exploit this demand leading to a potential increase in the volume of cold calls from companies purporting to offer various loans to individuals struggling financially

**Advance fee fraud** - This is when fraudsters target victims to make advance or upfront payments for goods, services and/or financial gains that do not materialise. It is likely that career opportunities may be offered for payment of an upfront fee for jobs that do not exist.

*David Murray.*





01359 259 259

www.clarkesofwalsham.co.uk

**CLARKES**

*Products to the Trade and Retail*

BUILDING  
CLOTHING  
SHOOTING  
AGRICULTURAL



Clarkes of Walsham Limited

The Street - Walsham-le-Willows - Bury St Edmunds - IP11 3BA

Monday - Friday 7:30am - 5:15pm Saturday 8am - 4pm

Clarkes of Walsham at Jimmy's Farm

Pennington Hall Lane - Wharstwell - Ipswich - IP9 2AR  
Open 7 Days a Week



## **M A Heating Services**



- \* Oil, Gas and LPG boiler servicing, replacements and repairs
- \* Repairs to central heating system faults i.e. pumps, programmers and cylinders
- \* Servicing and repairs to Rayburn, Aga Stanley and Esse
- \* Landlord's Certificates

**Telephone: 01379 783427**

**Wickham Gate, High Street, Gislingham, Suffolk, IP23 8JD**



# VILLAGE HALL UPDATE

With lifting of all Coronavirus restrictions being paused until a review by the Government on the 15th of July, the hall is still currently limited to the range of activities and capacity in line with Covid guidelines.

The hall's maintenance continues with the car park white lines now having been refreshed. I would like to thank Mary Anstee-Parry for painting the car park donations sign and Ken Mortlock for his work on the fencing.

**Eastern Angles Theatre Company** are returning to our village on **Saturday the 24th July**, with **Red Skies**, a comic and clever new play by Ivan Cutting. Tickets are available from their online box office or phone 01473 211498. Ticket numbers are limited to comply with social distancing rules and masks may need to be worn, depending on Covid regulations at the time of the performance.

At the food bank, demand for food parcels has slowed down slightly, with children returning to school and people returning to work. Your ongoing support of our food bank has enabled us, since the beginning of the year to deliver 851.22kg of food and hygiene products. This equates to feeding 96 people in our local community, this is only possible due to your amazing, generous support. Thank you all.

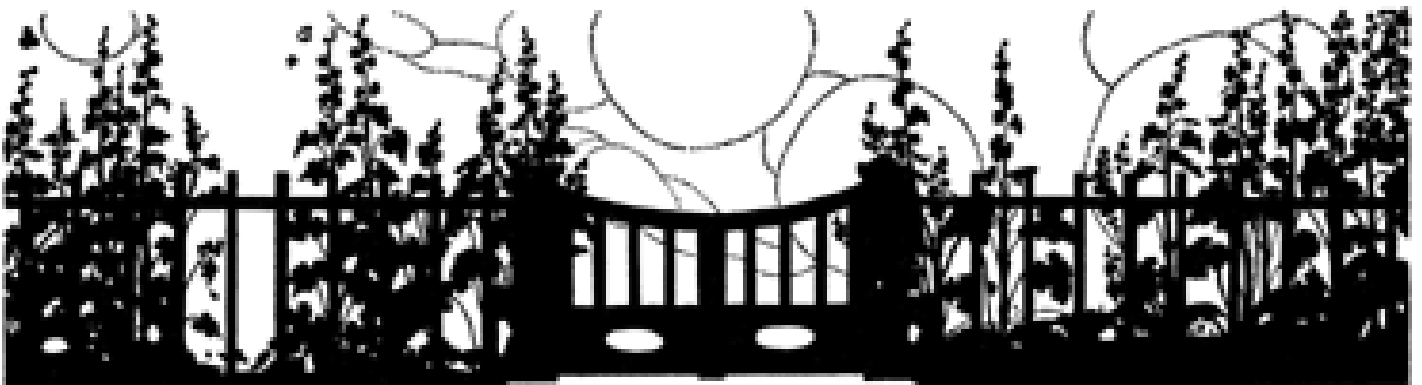
The hall held its first BASIC Pop-UP shop on the 19th of June. The Basic Life charity (1079263) are the proud inventors of the original community pop-up shops in the UK and run a number of pop up shops across Suffolk. They are partners with many supermarkets including Waitrose, M&S, Tesco and Lidl, collecting the excess foods from the supermarkets and then redistributing it, preventing food waste. The pop-up shop will be in the Village Hall on the last Saturday of the month, next on **31st of July**.

How it works. Come along, "buy" a bag for £2 and then help yourself to what ever we have, within reason, being mindful of others.

Mairi who runs the Monday children's Theatre classes is planning a 2 weeks **Musical Theatre Summer School** for children aged 4 to 12. Information is in the Observer and on Facebook.

The village **Garage Sale Trail** is on Sunday the **1st of August**. If you are interested in having your own stall and would like to be included on the map, please email [wlwhub@outlook.com](mailto:wlwhub@outlook.com). There will also be limited pitches available at the village hall, cost £5 per household.

*Amanda Ellis*



# CHIMNEY SWEEP



## ECO SWEEP

CHIMNEY SERVICES



- POWER SWEEP METHOD USED FOR A MORE THOROUGH CLEAN THAN A BRUSH
- FULLY INSURED
- INSURANCE RECOGNISED CERTIFICATES ISSUED ON EVERY SWEEP
- GOLD MASTER MEMBER OF GUILD OF MASTER CHIMNEY SWEEPS
- ALL CHIMNEYS, WOOD/MULTI FUEL BURNERS, AGA, BOILER FLUES SWEPT
- BIRD GUARDS FITTED

**TEL: (01359) 232335**

**EMAIL: [ecosweep@live.com](mailto:ecosweep@live.com)**

# N & S PEST CONTROL — SERVICES —

**RATS! MICE! RABBITS! MOLES! BIRDS! WASPS!  
FLIES! ANTS! SQUIRRELS! & MINK!**

All effectively controlled by

Norfolk & Suffolk Pest Control  
Chris Earith, 2 Orchard Lane,  
Pakenham, Nr. Bury St. Edmunds,  
Suffolk. IP31 2LQ

Phone: 01359 232538 Mobile: 07885 745446



## OVENCLEAN

*The original oven cleaning specialists*

- ✓ Friendly, professional and reliable
- ✓ Completely safe, eco-friendly cleaning system
- ✓ No fumes, no mess, no bother
- ✓ Removes grease, fat and burnt on carbon deposits from:

- |              |              |          |
|--------------|--------------|----------|
| • Ovens      | • Filters    | • Hobs   |
| • Grills     | • BBQs       | • Ranges |
| • Extractors | • Microwaves | • AGAs   |

Call today to book your oven clean

**01359 259818**

[www.ovenclean.com](http://www.ovenclean.com)

## Elite Fencing and Landscaping

JUST 10 MINUTES AWAY FROM YOU.  
FENCING, GATES, DECKING, PATIOS,  
PERGOLAS, PATHS, BASES,  
TURFING, DEMOLITION,  
REGRAVELING DRIVEWAYS,  
GARDEN CLEARANCE,  
GARDEN PROJECTS & RESTORATION,  
REPAIRS, ODD JOBS & MORE!

ALL TYPES OF OUTDOOR WORK  
UNDERTAKEN - SMALL OR LARGE  
FOR FREE ESTIMATES CALL TREVOR  
ON 01359 221128 OR 07761651567

EMAIL

TREVOR@ELITE-FENCING.CO.UK  
WEB: [WWW.ELITE-FENCING.CO.UK](http://WWW.ELITE-FENCING.CO.UK)



# WALSHAM LE WILLOWS AND DISTRICT WI



On a gently sunlight summer evening a group of old friends and neighbours gathered in a lovely garden chatting and exchanging news, smiling and laughing. This was the WI emerging from a spell of enforced hibernation. As a reminder, even though out of doors, there were chairs socially distanced and masks were handy. Janet Brown WI Adviser for Walsham began by saying how pleasing it was to see everyone face to face at last but that she was here to ensure that Walsham WI could continue with new names to hold the officers posts, otherwise she would have to advise suspension. A certain amount of lobbying ensued until three timely volunteers averted that course of events. Janet also explained the need to take a vote on this year's resolution calling for improved awareness of the subtle signs of ovarian cancer, from which every two hours someone dies. Exploring the garden in search of clues and gathering items for a horticultural quiz then entertained everyone as the sun ebbed away. A cake to celebrate the 50<sup>th</sup> year of a reformed Walsham WI and was cut by two of the original members. A cup of tea (and was that a glass of Pimms perhaps?) brought the evening to a close.

We plan to meet in the same alfresco surroundings albeit with more weather proofing on July 14<sup>th</sup> for our Annual Meeting. When Janet Brown will give us a talk about her experience of life on a canal boat. We would be delighted to welcome visitors and prospective members. Membership of the WI gives an opportunity to join with friends and neighbours from our village and a chance to join in activities all over West Suffolk through the Suffolk West Federation of WIs and of course to belong to a national organisation that is both widely respected for its influence on many aspects of government and for its proud history.

*Jill Newell 01359 259450*



## COMMUNITY LUNCH

Over the last sixteen months there have certainly been some strange times due to Covid 19! As restrictions are starting to improve now, we thought the time is right to hold Community Lunches again within Covid rules, so it will be waitress service. Numbers will be restricted to 20 at the moment.

The Memorial Village Hall will be open from 12.30pm on Monday 12<sup>th</sup> July 2021. Chicken Casserole potatoes and vegetables will be served at 12.45pm. followed by Lemon crunch. Tea and coffee will follow.

We look forward to seeing you there.

Please book a place, at £7.00, with Shirley on 01359 258532 by 5pm on Thursday 8<sup>th</sup> July.

*Shirley White*





# ***J W Amps Ltd***



**Offering service and repairs to all types and makes of garden machinery, ATV's, compact tractors etc.**

**Machinery bought and sold**

**Over 15 years experience – factory trained by Briggs & Stratton, Stihl, Westwood and Countax.**

**Collection and delivery service available.**



**Contact Simon**

**Mobile 07974 430366**



**E-mail: [simonamps@btinternet.com](mailto:simonamps@btinternet.com)**

## **WILLOWSERVE LTD**

### **Plumbing & Heating Services**

- ✓ Worcester Bosch Approved Installers with up to 12 Years Warranty on Worcester Bosh Boilers
- ✓ GASSAFE, OFTEC, C.I.P.H.E, CHECKATRADE, TRADING STANDARDS approved
- ✓ Replacement Boilers, Hot Water Cylinders, Underfloor Heating, Servicing, Repairs, General Plumbing, Bathrooms etc. FREE QUOTATIONS

**For a Professional Reliable Service**

**Tel: 01359 259886 Mobile: 07771 557937**  
**[willowserve\\_ltd@hotmail.com](mailto:willowserve_ltd@hotmail.com)**



# EASTERN ANGLES

## Red Skies (Saturday 24<sup>th</sup> July)

A comic, clever and at times deeply personal new play by Ivan Cutting (*Private Resistance*) probes behind the façade of two famous authors, to find the secrets that both inspired and haunted them.

Directed by Nicola Pollard, the play centres on a fictional meeting between two of Suffolk's most famous residents: George Orwell, who took his name from the Ipswich river, and Arthur Ransome, who lived on it.

The play opens in Southwold just before the outbreak of war, and Orwell's father is dying. Arthur, along with his wife Evgenia, are sailing up the coast from Pin Mill. When Orwell, who is about to write *Animal Farm*, learns that Evgenia was the former secretary of Russia's revolutionary leader, Trotsky, and that Ransome used to play chess with Lenin, he hurries down to the harbour.

With their shared interest in fishing, fables and the east coast, the two writers begin a tentative friendship, until a mutual suspicion of spies causes sparks to fly. The extraordinary links between Orwell and Ransome and the women they loved fuels the flames. Resolution comes in 1950 with a new decade, and Orwell's final days.

Online booking is available or call the box office on 01473 211498 (Mon-Fri, 10am - 2pm)

\*This applies to the venues where Eastern Angles runs the box office.

### See it Safely

Even though this event is taking place after 21 June, we're still working on the basis of social distancing and masks being required indoors. As this is a tour, we will be guided by each venues' Covid-19 Protocols, so please contact the venue directly to learn more about what they have in place.

### Cancellation/Refunds

If you or someone you know has experienced any of the symptoms of Covid-19 in the two weeks prior to the performance or experiences symptoms on the day you should self-isolate and not come to the performance. Please email the box office to return your tickets, a full refund will be given.

If Eastern Angles has to cancel the event due to Covid-19, or for any other reason, we will contact you as soon as we can to re-schedule or arrange a refund.

### Performers and Staff

Performers will form a bubble, therefore they don't need to wear masks when performing or socially distance from each other. The performers, stage crew and camera crew will be testing regularly.

Our staff will be taking lateral flow tests twice weekly in accordance with government guidance.

See advert on page 18

**TONY FISHER**  
**PLUMBING & PROPERTY MAINTENANCE**

24Hr Emergency Callout    Burst, Leaks, Blockage, etc    Bathroom/shower installation  
Tanks/cylinders/radiators    Tiling floors/ walls    Painting & Decorating  
General DIY jobs    Garden maintenance

**Tel: 01359 242556    Mobile 07758 327743**

**Reliable & friendly service**



**Garnet House Interiors**

INTERIOR DESIGN, SOFT FURNISHINGS, FABRIC, CURTAIN POLES, WALLPAPER AND DESIGNER PAINTS

**CALL 07568 365694**

INFO@GARNETHOUSEDRAPES.CO.UK  
WWW.GARNETHOUSEDRAPES.CO.UK

**IS YOUR COMPUTER GIVING YOU HEADACHES?**

PC & Laptop Repair  
Virus Removal  
Diagnose Start up Problems  
Replace Hard Drives  
Replace Power Supplies (PC Only)  
New Laptop Screens  
New PC / Laptop setups

**Honest - Reliable - Affordable**

**Contact: Jim**

01359 251946

07729 868669

email

info@completesolutions-it.co.uk

www.completesolutions-it.co.uk



# WALSHAM LE WILLOWS SPORTS CLUB CIO

AGM for members Sunday 4<sup>th</sup> July 2021 at 14.30 at Sports Ground

Open invitation to all from 15.30

This is our first full year as a formal charity and although everyone is welcome to the AGM, they have a tendency not to be seen as an exciting event so our hope this year is to use the occasion to invite others in the community to join us, either then or later in the afternoon, to view what is on offer, to ask questions and maybe give guidance on what else we might tackle in the future.

We also want to use the occasion to thank individuals who have given time and money to transform our clubhouse during the lockdown period and hope they also will join us in a cup of tea, some nibbles, and a good chinwag.

Finally sport, leisure and amenities will be key elements of the Neighbourhood Plan for the village, and we want to know how best the Club fits into that.

*The Trustees*



## WALSHAM HISTORY GROUP

**Duleep Singh, the last Maharajah**

**A talk by Fraser Harrison**

**Wednesday 7<sup>th</sup> July at 7.30pm**

**in the Memorial Village Hall**

**Admission £4.00**

### **Please note!**

Due to the extended Coronavirus restrictions, the number of people we will be able to accommodate in the MVH for this event is now restricted to 50, to allow for social distancing. This number is inclusive of the committee and speaker, therefore we strongly advise that you reserve a seat in advance to avoid disappointment.

Please contact Frances Jenner on 01359 259242 or [frances.jenner@hotmail.com](mailto:frances.jenner@hotmail.com)

Please remember to bring your mask! We look forward to welcoming you.

*Frances Jenner*

|  |   |
|--|---|
|  | <p><b>THE MOBILE POST OFFICE</b></p> <p>The Mobile Post Office will still be coming to the<br/>Village Hall Car Park on Tuesday &amp; Thursday mornings<br/>from 11:00am till Noon till further notice.</p> |
|--|---|

## Little Willows Pre-School



**Experienced, qualified, dedicated staff, offering childcare and education to children aged 2 - 5 years**

**Open term time - Monday to Friday 8.45am - 2.45pm**

(Wrap Around care available - Breakfast Club 8am - 8.45 and

After School Club 2.45pm - 4.30 or 5.30pm)

**Ofsted inspection rating - GOOD**

**Please contact us for more information**

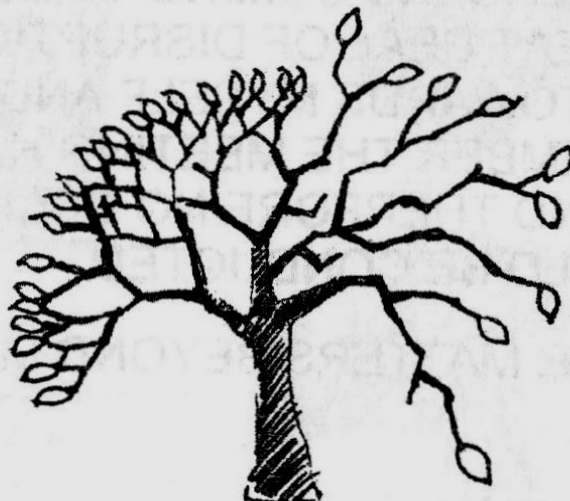
PRIORITY IS GIVEN TO FUNDED CHILDREN

Phone: 01359258702

email: [sarah.littlewillows@googlemail.com](mailto:sarah.littlewillows@googlemail.com) or [office.littlewillows@gmail.com](mailto:office.littlewillows@gmail.com)

Charity number:1050897

## J WHEELER TREE AND WOODLAND SERVICES



**Fully Qualified  
Arborist and  
Ecologist**

**Full list of  
services on  
reverse**

**Phone: 01379643197/07707674582**

**Email: [jwheelertrees@gmail.com](mailto:jwheelertrees@gmail.com)**

What is the name of the police officer in 'Top Cat'?



# THE BASIC LIFE CHARITY

(Registered Charity No. 1079263 )

**Who We Are?** The proud inventors of the original Community Pop-Up shops in the U.K. We are an independent Christian charitable trust and were formed in 2000. We operate in Felixstowe and the surrounding area's.

**What We Do?** Supermarkets throw perfectly good food away every day and we knew we could change society by making it available in an easy, sensible way. We are partners with Marks and Spencer, Tesco, Waitrose, Lidl, Morrisons, Aldi and more. These supermarkets now release their excess food to us to collect and then we redistribute it.

We came up with the **Basic Community Pop-Up Shop** idea which meant we would collect the food and then place it on tables in church halls or other community buildings. People queue up and then 'buy' a large jute bag for £2 and then simply help themselves to what they'd like.

**When and Where?** The Basic Life Charity have brought their pop-up shop to Walsham le Willows Memorial Village Hall. The first was held on the 19th of June and was a great success. So we will be returning on the last Saturday of each month, doors open at 10am until 12 midday or until we run out of items.

**What Items can you Expect?** As we collect from the supermarkets, we get a variety of foods and goods. All will be in date. We aim to supply fresh fruit and vegetables to all our pop-up shops. Sometimes there are treats like chocolates and flowers. We also supply other essential items such as sanitary products, toiletries and nappies. Why not pop along and see what we have on the **31st of July**.

**What Happens To The Money?** All money from the pop-up shops will be used to fund community events held by the Memorial Village Hall in the future.

*Amanda Ellis*



## FUND RAISING EVENTS

As new members of the Community Council committee, we are keen to organise some fundraising events to run throughout the year such as the sale trail and others once the relaxation of Covid rules allows. With the money raised, we intend to offer some free events in the village. A couple of the ideas we are working towards are to run a bug box building workshop in the village hall garden for children and adults. Also for Father Christmas and his helpers to pay a visit to our village and give a gift to all the children. We would love to hear from any members of our community that have ideas for events you would like to see happen in the village or any support you may wish to offer. Please email [wlwhub@outlook.com](mailto:wlwhub@outlook.com) to register any interest or just give us some ideas!

*Tara Campbell & Kayleigh Waugh*





**Your One Stop  
Friendly Garage**

- \* MOT's (Class 4 & 7 Up to 3500kg)
- \* MOT Repairs
- \* Diagnostics
- \* Servicing (Inc under 3 years old)
- \* Cambelts
- \* Brakes, Tyres & Exhausts
- \* 4 Wheel Laser Alignment (tracking)
- \* Clutches
- \* Air Conditioning Servicing
- \* All Repairs Carried Out

**Free Collection and return  
or courtesy car available**

**Call Vic: 01359 250671**

**Flpmotors.com**

**MOT's £35.00 with this advert (Class 4)**

**Unit 23a, Shepherds Grove Ind Est  
Stanton IP31 2AR**

# TIME FOR YOU™

DOMESTIC CLEANING

## Are you tired of cleaning?



We have the  
right cleaner  
waiting  
to help  
you.

**Regular - Weekly - Cleaner**

**01359 258991**

Typically £13 per hour

[www.timeforyousuffolk.co.uk](http://www.timeforyousuffolk.co.uk)



## POLLARD & CO



**Builders of Integrity**

## TREVOR POLLARD

Millfield  
Wattisfield Road  
Walsham Le Willows  
Bury St Edmunds  
Suffolk  
IP31 3BD

**Tel & Fax : 01359 258339**

**Mobile : 07768 124715**

- New Houses • Extensions • Renovations
- Barn Conversions • Refurbishments

**Email: [enquiries@pollardandco.co.uk](mailto:enquiries@pollardandco.co.uk)**

# DIARY OF EVENTS

## JULY

- Wed 7th History Group Talk  
Village Hall 7:30pm
- Sat 10th Picnic & Pizza Party  
Wild Wood 4:00pm
- Wed 14th WI Annual Meeting
- Sat 17th Charity Trailer Gig  
Sports Club Time TBA
- Sat 24th Eastern Angles  
Village Hall 7:30pm
- Mon 26th Musical Theatre Course  
Village Hall See Advert

## AUGUST

- Sun 1st Garage Sale Trail  
Hall & Village
- Wed 11th WI Picnic & Visit  
Walsham Wild Wood
- Sat 14th Horticultural Show  
Village Hall 2.30pm
- Sun 29th Open Gardens  
Village Celebration

## SEPTEMBER

- Sat 11th Scythe Workshop  
Wild Wood 10:00am

- Wed 8th WI Talk. Decorating  
recycled bottles & jars

## OCTOBER

- Wed 13th WI Talk Sally Daniels  
My Wish Charity
- Sun 31st Halloween Pumpkins  
Wild Wood 4 to 7pm

## NOVEMBER

- Wed 9th WI Christmas  
Workshop

## DECEMBER

- Sat 4th Mini-Market & Tree  
Lighting St Mary's
- Wed 8th WI 50th Anniversary  
St Mary's 7:00pm

**The above are dependent upon the Covid Restrictions which may be prevailing at the time or at the time when a final decision needs to be taken as to whether they should take place.**

**Please let me know if you would like to have an event included on this page.**



## BLUE BOAR HOME MEALS & DRINKS SERVICE

For full details visit

[www.theblueboarwalsham.co.uk](http://www.theblueboarwalsham.co.uk)

Place orders by phone 259168

or

email: [theblueboarwalsham@gmail.com](mailto:theblueboarwalsham@gmail.com)





**WALSHAM LE WILLOWS  
SPORTS CLUB  
TRAILER GIG  
FEATURING B4**

Saturday 17th July 2021

Tickets £5 (in advance)

£7 (on the gate)

Available from

H's Beautique 259497

Nick Foulger 07752 949182

Gordon Ross 07742111892

Gates open at 7pm

Music starts at 9pm

In aid of

St Nicholas Hospice Care

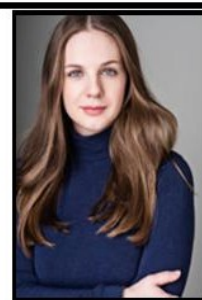
**Walsham History  
Group  
Presents**

*Duleep Singh,  
the last Maharajah*

*A talk by  
Fraser Harrison  
Wednesday 7<sup>th</sup> July  
at 7.30pm  
in the  
Memorial Village Hall  
Admission £4.00*



**MUSICAL  
THEATRE  
SUMMER  
SCHOOL**



**What we will be getting up to...**

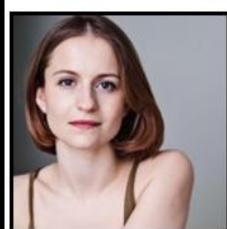
**DANCING SINGING ACTING**  
**PUPPETRY WORKSHOP CRAFTS**  
**CATS THE MUSICAL MAKE UP**  
**MINDFULNESS YOGA**



**When?** 26th - 30th July & 2nd - 6th August Monday - Friday 9am - 3pm

**How much?** (£150 Per Week) 10% sibling discount

**Ages?** 4-12



**WITH SPECIAL GUEST;**  
**MEGAN ARMSTRONG**  
**CATS**  
**AVENUE Q**  
**YOGA INSTRUCTOR**  
**& BREATH COACH**

Any enquiries or questions please email;  
[mbbmusicaltheatre@gmail.com](mailto:mbbmusicaltheatre@gmail.com)  
Experienced, working  
Musical Theatre professional.  
- BA (Hons) Musical Theatre  
- DBS checked



# Walsham-le-Willows Sale Trail

Sunday 1<sup>st</sup> August from 10am

Sell goods from the comfort of your doorstep!

Or book a pitch at the Village Hall

Refreshments will be available at the Village Hall  
along with a map of the selling sites.

**£5 per household**

To book your place

email [wlwhub@outlook.com](mailto:wlwhub@outlook.com) or call 01359-259519

## Wild Wood Pizza Picnic

Saturday 10th of July at 4pm

Have you been down to the woods lately?

**Come along to see how your community wood is taking shape, grab a slice of wood fired pizza and meet up with family and friends...**

**Wood fired pizza with various toppings available, freshly baked at the woods and at a very reasonable price.**

**Soft drinks, Pimms or craft beers by the can on sale.**

**Cordials for your own reusable cups**

**Logs, rugs and folding chairs available or bring your own for a safe seat**

**Please let us know if you would like to come so that we can plan the event with the appropriate Covid procedures in place and make enough pizza dough.....**

**Contacts: John Stebbing**

**[john@architectatwork.co.uk](mailto:john@architectatwork.co.uk) or 01359 259061**

**Lorna Mackinnon**

**[mackinnonlorna@gmail.com](mailto:mackinnonlorna@gmail.com) or 01359 259140**



# RED SKIES

at  
**Walsham-le-Willows  
Memorial Village Hall**  
**Saturday 24th July**  
**at 7:30pm**



**Tickets £12.50**  
**Available from**  
**Eastern Angles**  
**Phone 01473211498**  
**or on-line**  
**Eastern Angles Walsham-le-Willows**



**WALSHAM LE WILLOW VILLAGE HALL**  
The Community Council committee welcome you to the  
**MVH Coffee Shop**  
**In the Garden and the Hall**  
Reopening under government guidelines for  
village halls and COVID 19.  
**Open every Thursday**  
From a time of 10.30am to 12.00pm  
Pricing remains the same for 2021 as 2020.  
**Please come along and enjoy the company.**

The flowers of which tree are known as 'catkins'?



# PARISH COUNCIL OF WALSHAM LE WILLOWS MINUTES

of the meeting held on Wednesday 9<sup>th</sup> June 2021 commencing at 7.00 p.m. in the Memorial Hall.

*[Pending formal approval at the next meeting, these minutes have been informally approved by Parish Councillors as a true record. If any further corrections are required these will be minuted at the next meeting prior to formal approval]*

**MEMBERS PRESENT** - Cllrs Paul Arbon; Ian Bartholomew; Richard Belson ; Brian Kinnair: **NON-MEMBERS PRESENT** - Cllr Rick Meyer [District]; apologies Cllr Jessica Fleming [County].

## **1 FIRST BUSINESS**

- 1.1 **Acceptance of apologies** - Received from Nick Mecrow (NM) – for reason of family celebration and ; Trevor Roberts for reason of work commitments. Both were accepted.
- 1.2 **Minutes of the last Annual Meeting of the Parish Council held on 26<sup>th</sup> May 2021** were unanimously approved as true and accurate record with on correction of the day the meeting was held from Tuesday to Wednesday.
- 1.3 **To receive pecuniary and non-pecuniary interests** – None declared.
- 1.4 **To consider applications for dispensation** – None requested.

- 2 **PUBLIC OPEN FORUM** including County and District Reports and Questions  
*[Members of the public are invited to speak at the discretion of the Chair and each representation should take no more than 3-5 minutes. Matters arising can be referred to a committee, placed on the agenda of the next meeting, responded to by the Clerk or simply noted Councillors. This is to ensure that no discussion takes place for any matter for which there has been no prior notice on the agenda.]*

One member of the public present representing History Group and Gardens Weekend Committee. The History Group are anticipating an increased number of visitors to the churchyard and asked if the ivy could be cleared from the headstones in the 'wild area' behind the church. This used to happen with the help of an informal group but has ceased. The Parish Council unanimously agreed that there was no objection to this. It was also agreed that the Clerk would enquire of David Murray as to cost if he were asked to do this work, just in case volunteers are not forthcoming.

Open Gardens Committee report that some of the roses in the churchyard have responded well to the pruning kindly carried out by committee members, others





### Vegan Ready Meals by The Fairy Godmother

- 100% dairy & meat free Vegan Dishes including Gluten Free options.
- Free samples and menus delivered to your door.
- Meals delivered chilled with heating instructions included.
  - Microwave and oven friendly.
  - Free delivery on orders over £10.
  - All meals priced at £3.95 each.
    - 5 Star EHO Rating.

*Order meals or samples by Friday evening  
for Monday delivery!*

**Contact us:** Tel – 01359 269210

Email: [foxyfoods@outlook.com](mailto:foxyfoods@outlook.com)

Facebook: [www.facebook.com/fairygodmothervegan](https://www.facebook.com/fairygodmothervegan)

*Cash & Card Payments Accepted*



## **Ordering your heating oil through CERTAS ENERGY can help YOUR SPORTS CLUB**



They will make a contribution to the Sports Club of  
£10 per 1000 litres or £5 per 500 litres

**Call 01603 885100 (sales team)  
or 01603 885236 (service team)**

Every order so far placed, has been competitively priced against other  
suppliers - why wouldn't you help yourself and us

“All contributions gratefully received”  
says Ian Campbell (Treasurer)

have not. Attempts will be made to identify, with the help of Peter Beales Roses as soon as these flower with the intention that more of the same or very similar type will be planted to fill the gaps.

Frances Jenner has been researching the possibility of native daffodils for planting in the churchyard and following the previous very expensive quote has found a specialist supplier who has suggested, and can supply, a variety called Van Sion (Telemonius plenus), a native variety that was once very well established in East Anglia. The bulbs are local grown and order for the autumn would have to be placed very soon at a cost of just £115 (wholesale price) for 1200 bulbs. Cllr Bartholomew proposed that this be put on the next agenda for resolution that the Parish Council fund the purchase of the bulbs.

Cllr Bartholomew raised issue of report of republication of bus timetables. The Clerk advised that advice has been received previously when this happens but will make enquiries to see if any Walsham routes have been affected.

### **3 PLANNING APPLICATIONS TO BE DISCUSSED** (plus any received after the publication of this agenda)

**APPLICATION FOR PLANNING PERMISSION - DC/21/02612 Proposal:** Planning Application - Change of use and conversion of redundant agricultural building to form garage, workshop and gym area to be used in connection with and ancillary to the existing residential barn conversion on site. **Location:** Barn At West Street Farm, Ixworth Road, Walsham Le Willows, Suffolk **The Parish Council Supported This Application**

#### **APPLICATION FOR WORKS TO TREE(S) IN A CONSERVATION AREA - DC/21/02934**

**Proposal:** Notification for works to trees in a Conservation Area - Fell 1no Eucalyptus (excessive shading and root damage to property) **Location:** The Beacons, Ixworth Road, Walsham Le Willows, Suffolk IP31 3AN **The Parish Council Made No Comment**

**APPLICATION FOR WORKS TO TREE(S) IN A CONSERVATION AREA - DC/21/03142 Proposal:** Notification for works to trees in a Conservation Area - Fell 1no Ash **Location:** 2 The Causeway, Walsham Le Willows, Suffolk, IP31 3AB **The Parish Council Made No Comment**

**APPLICATION FOR AGRICULTURAL DETERMINATION - DC/21/03217 Proposal:** Application for prior approval for a proposed: Erection of a barn for Agricultural or Forestry Use. The Town and Country Planning (General Permitted Development) (England) Order 2015 (as amended) Schedule 2, Part 6 - Erection of agricultural storage building for straw and animal bedding. **Location:** Priory Farm, West Hall Road, Rickingham Inferior, Suffolk IP22 1LY **The Parish Council Made No Comment**

## Mary Anstee-Parry

Tuition in traditional woodcarving and sculpture



Beginners welcome  
Custom-built workbenches  
Join friendly groups  
Classes on Tuesdays and Fridays  
Visit: [www.anstee-parry.com](http://www.anstee-parry.com)  
email: [anstee-parry@hotmail.com](mailto:anstee-parry@hotmail.com)

# could you foster?



**we urgently need  
foster carers  
in your area**



We can help you to provide a young person with a stable, secure home.

Call us on 0800 389 0143

Visit us at [www.nexusfostering.co.uk](http://www.nexusfostering.co.uk)

**BROWN'S**



## **All Types of Tree Surgery Undertaken**

**Thinning Reductions  
Deadwooding Felling  
Storm Damage**

**All types of hedges, shrubs  
and fruit trees pruned.**

**Seasoned logs and  
woodchip mulch delivered**

**For a Free Quote ring  
01359 259149  
Mobile 07881 816761**

**Chainsaw Certificate  
City & Guilds Qualified  
Public Liability Insurance**

## **N.E.D. SOLUTIONS**

### **PROFESSIONAL SERVICE**

**HOME MAINTENANCE  
INSTALLATIONS.**

**PROPERTY MAINTENANCE.  
HOME REPAIRS.**

**KITCHEN AND BATHROOM  
INSTALLATIONS**

**TILING. FLOORING**

**PAINTING AND DECORATING**

**NO JOB TO SMALL**

**FREE QUOTATIONS.CALL 07765  
400464. NIGEL DELANEY**



#### 4 **PLANNING OUTCOMES (decided by Mid Suffolk District Council, Planning)**

##### **APPLICATION FOR WORKS TO TREE(S) IN A CONSERVATION AREA**

- **DC/21/02598 Proposal:** Application for works to a tree in a Conservation Area

- Fell 1 No Horse Chestnut due to major limb failure which has left the tree structurally unsafe. **Location:** The Rosary, Palmer Street, Walsham Le Willows, Suffolk IP31 3BS **MSDC Raised No Objection.**

##### **APPLICATION FOR PLANNING PERMISSION - DC/21/01965 Proposal:**

Householder Application - Erection of two storey side extension; Re-roof existing single storey rear extension and insertion of rooflights. **Location:** 9 Wattisfield Road, Walsham Le Willows, Suffolk, IP31 3BD **MSDC Granted Permission**

#### 5 **REPORTS**

##### 5.1 **Clerk's report & financial report to 31<sup>st</sup> May 2021 & request for payments.**

The summary of payments was checked against invoices which were signed by Cllrs. Bartholomew and Kinnair having been unanimously approved. The bank reconciliation was and checked and approved against bank statements, and signed by Cllr Kinnair (no change to balances reported to the 31<sup>st</sup> April).

| # | <i>Payee</i>                    | <i>Amount</i> | <i>Description</i>                       |
|---|---------------------------------|---------------|--|
| 1 | Suffolk Accident Rescue Service | £40.00        | Donation (under s.137)                   |
| 2 | Headway Suffolk                 | £40.00        | Donation (under s.137)                   |
| 3 | East Anglian Air Ambulance      | £40.00        | Donation (under s.137)                   |
| 4 | EACH                            | £40.00        | Donation (under s.137)                   |
| 5 | Mid Suffolk CAB                 | £40.00        | Donation (under s.142 - general powers)  |
| 3 | Suffolk West CAB                | £40.00        | Donation (under s.142 - general powers)  |
| 7 | Memorial Village Hall           | £25.00        | Hire                                     |
| 8 | Parish Council employee         | £764.24       | Wages                                    |
| 9 | K Boardley                      | £17.85        | Reimbursement for Website Plugin renewal |
| # | <b>Payments In</b>              | <b>Amount</b> | <b>Description</b>                       |
|   | <b>None received</b>            |               |  |

5.2 **Problem Reports SCC** – Clerk reported that Elmside grass cutting and the signage on Sumner Road and Townhouse Road had not yet been reported and

  
**botesdaledental**  
PRACTICE & IMPLANT CLINIC

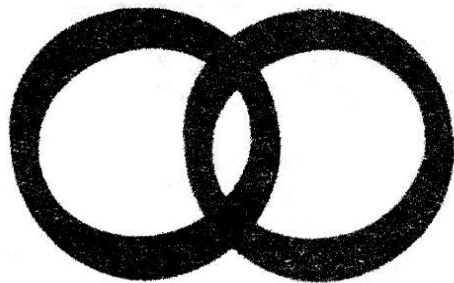
Your local,  
family run  
**Dental  
Practice**



Find us on  
[www.botesdaledental.co.uk](http://www.botesdaledental.co.uk)



Tel: 01379897176  
Email: [reception@botesdaledental.co.uk](mailto:reception@botesdaledental.co.uk)  
Botesdale Dental Practice, Holly Close,  
The Drift, Botesdale, Suffolk IP22 1DH



**ROBINS  
ROW**

*Insurance Brokers Since 1867*

*AN INDIVIDUAL SERVICE FOR ALL YOUR COMMERCIAL AND PERSONAL INSURANCE*

**SPECIALISING IN HIGH VALUE HOMES,  
COUNTRY HOUSES, LISTED AND THATCHED PROPERTIES  
AND ALL COMMERCIAL INSURANCE SOLUTIONS**

**TEL: (01787) 378205**

**EMAIL: [ADMIN@ROBINSROW.COM](mailto:ADMIN@ROBINSROW.COM)**

**HALL STREET, LONG MELFORD, SUDBURY CO10 9JB**

AUTHORISED AND REGULATED BY THE FINANCIAL CONDUCT AUTHORITY

sought some clarification. It was noted that grass cutting around the village seems not to have happened as it usually does but it might be that the growth has been particularly fast this year. Clerk to check on the grass cutting routine with SCC and log reports as required.

5.3 **Action Log** – Clerk noted that green RAG rating had been applied to most items with dates for completion applied for 09/06/2021, 3 months, 6 months and 12 months hence. The Clerk reported that an invoice for the horse-riding signage cannot be found. It is thought that this may have been purchased previously and a nominal sum (equating to same amount paid for the footpaths signage has been included in the asset register). Cllr Kinnair asked about the Village Presentation Orderly. Clerk advised that there had been no responses to the recent ad. Cllr Kinnair suggested that maybe this could be combined with some extra ad hoc hours for a village caretaker role to address some of the minor jobs that need completing. Clerk to draft a revised ad for agreement at next meeting.

5.4 **Internal Control Check** – Cllr Bartholomew suggested a check on contracts of employment the only one being for the Clerk at the moment. Clerk to forward contract to Cllr Bartholomew for review.

## 6 **MATTERS ARISING** *[from previous meeting only where further decisions are required]*

6.1 **Internal Audit** - Cllr Bartholomew had reviewed the Clerk's proposals for responses to audit recommendations and agreed them with some minor changes. Specifically, Cllr Bartholomew proposed that to address the recommendation on the internal control check policy a risk register should be created in the first instance which would assist councillors with reviewing the internal control check suite. Cllr Bartholomew's proposal had been previously circulated and was unanimously agreed. Clerk to prepare risk register for next meeting starting with financial risks.

6.2 **Earmarked/ringfenced funds** – Cllr Kinnair proposed changes to earmarked funds following outcome of informal group discussion on 1<sup>st</sup> June as follows be formally approved: Churchyard Wall from 5k to 8k, removed £250 from s.137 pot, streetlighting from 4k to 12k, Road Safety added 1k for The Causeway and Parish Council Assets added 1.5k potentially for new shed. Making total of earmarked/ringfenced funds of £54,500. Unanimously agreed.

6.3 **Play Area Development** – Cllr Kinnair reported back from the sub-committee and took questions. A bid for £25k CIL funding from MSDC has been submitted and is awaiting response. Cllr Meyer was asked about the procedure and advised that if the current bid was unsuccessful should a general enquiry be submitted to other MSDC teams for funding. Another survey of usage (within last three months) would have to be completed as part of the bid as a benchmark to assess the impact of the investment in new equipment. It was thought that at the appropriate time this would be best published on the Community Hub facebook page. Cllr Bartholomew asked if provision had been made for ongoing maintenance costs.



# EMILY SMITH

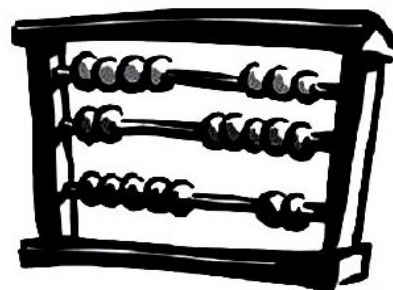
## Garden Design

Garden design - Border renovations - Planting plans  
Garden maintenance - Specialist horticultural advisory service

Visit [www.emilysmithgardendesign.co.uk](http://www.emilysmithgardendesign.co.uk)  
email [design@emilysmithgardendesign.co.uk](mailto:design@emilysmithgardendesign.co.uk)  
Call 07917 842071

# TWINN ACCOUNTANTS LTD

We offer an **efficient and professional** accountancy service at a very competitive rate.



- ✓ Annual accounts and tax returns for Sole Traders, Partnerships and Limited Companies
- ✓ Preparation and assistance with VAT returns
- ✓ Payroll Services
- ✓ Construction Industry returns
- ✓ Management Accounts
- ✓ Tax Planning
- ✓ Company Secretarial Services

Tel: 01284 787616

Fax: 01284 787183

Email: [info@twinnaccountants.co.uk](mailto:info@twinnaccountants.co.uk)

[www.twinnaccountants.com](http://www.twinnaccountants.com)

Suite 4, East Barton Barns,  
Great Barton, IP31 2QY.

**All accountants are not the same...we promise!**



## Ed Batram GARDEN SERVICES



Lawns – Paths – Patios – Borders – Fruit – Vegetables – Pruning  
Tree Work – Hedging – Log Splitting – Fencing – Brickwork – Paving  
Clearance – Design – Planting – Aftercare

**Certificated/Insured**

**FREE ESTIMATES Tel: 01379 898203 (home) 07950923696 (mobile)**

**email: [edwardbatram@icloud.com](mailto:edwardbatram@icloud.com)**

Cllr Kinnair said the rough estimation of these was approx. £2k per annum and one company in particular had indicated this service was available to include the annual RoSPA report. Cllr Belson thanked Cllr Kinnair for all the work he has been putting into this.

6.4 **Spending of CIL Funding** – Councillors discussed the draft and made some suggestions for updating. The Clerk will re-draft and circulate for consideration at next meeting.

6.5 **Churchyard Wall** – Cllrs considered the two quotes and updated information on the availability of one. It was unanimously decided to appoint the contractor who had indicated a start this year. Clerk to inform the contractor and secure a firm start date.

7 **OTHER ITEMS FOR DISCUSSION** [*Councillors can request that Chair or Clerk place items for discussion and decision on the agenda here*]

7.1 **Community Council** – Cllr Bartholomew volunteered and was unanimously appointed as Parish Council Representative to the Community Council.

7.2 **Traffic Survey results & SID data** – Cllr Belson spoke to the results as previously circulated and in the light of comparison he had done with results for another parish. In considering speeding issues the authorities focus on the proportion of vehicles travelling at a speed where the driver could reasonably be prosecuted - i.e. > 35 mph in a 30 mph area, and will normally expect at least 15% of drivers to fall into this category to identify a serious problem. In our surveys 12% of the vehicles entering the village along the Finningham Road and 3% of the vehicles on The Street were in the >35 group. As the other village had figures well in excess of 40% and were still having major problems in persuading the authorities to take action it was felt that it is unlikely that agreement would be forthcoming for Walsham on the basis of these results.

Cllr Belson also noted a suggestion from a parishioner for priority flow signage on Wattisfield Road. It was felt that giving priority to one direction might actually speed the traffic in that direction and the narrow road might be the best control on traffic speed. Clerk to enquire as to the possibility that any such request would be granted by Highways and also the potential costs and report back to the next meeting.

7.3 **Stream** – The Clerk referred to previously circulated response to enquiries. information previously circulated. The Clerk relayed request from Paul Hubbard for volunteers having explained that the Parish Council had not yet put out such a request as it was planned to use the Parish Meeting for this purpose, and we still had not had a management plan back from either the Environment Agency or Suffolk Wildlife Trust. Clerk waiting to hear back from PC Colin Taylor who had advised he would speak to SWT in the first instance. Clerk to forward email from SCC Flood and Water Technician to Cllr Meyer who offered to check the MSDC mapping databases for Riparian Ownership responsibilities. The Clerk to chase

# *Upstairs Downstairs*

**A PREMIER CLEANING SERVICE**

**.... Bringing a sparkle into your home**

Regular Housework

Trained Personnel

Safe, Secure and Fully Insured

**No hidden administration charges**

**Tel: Gigi Wadham-Smith**

**on 07580314010**

**or email: [gigi@upstairsdownstairs.biz](mailto:gigi@upstairsdownstairs.biz)**

Rookery Barn Rookery Lane Walsham-le-Willows Suffolk IP31 3BD

Visit us at: [www.upstairsdownstairs.biz](http://www.upstairsdownstairs.biz)

## **Stuart Walker**



### **Decorating, Painting & Refurbishments**

**A locally based company offering an honest and reliable service.**

**Painting - Decorating— Refurbishments - Repairs.**

All work considered indoors & out! Fully Insured & free quotations provided. Please contact Stuart on Tel: 07711 606 464  
or Email: [stumal@hotmail.co.uk](mailto:stumal@hotmail.co.uk)



PC Taylor and if necessary, contact SWT directly, also to contact Paul Hubbard to explain the situation with offer of interim support until the Parish Council has gathered enough information to decide how to proceed.

## 8 CORRESPONDENCE - None

## 9 ANY OTHER BUSINESS/QUESTIONS TO THE CHAIRMAN

*[No decisions can be made under AOB. Matters requiring decision must be placed on the agenda for the following meeting]*

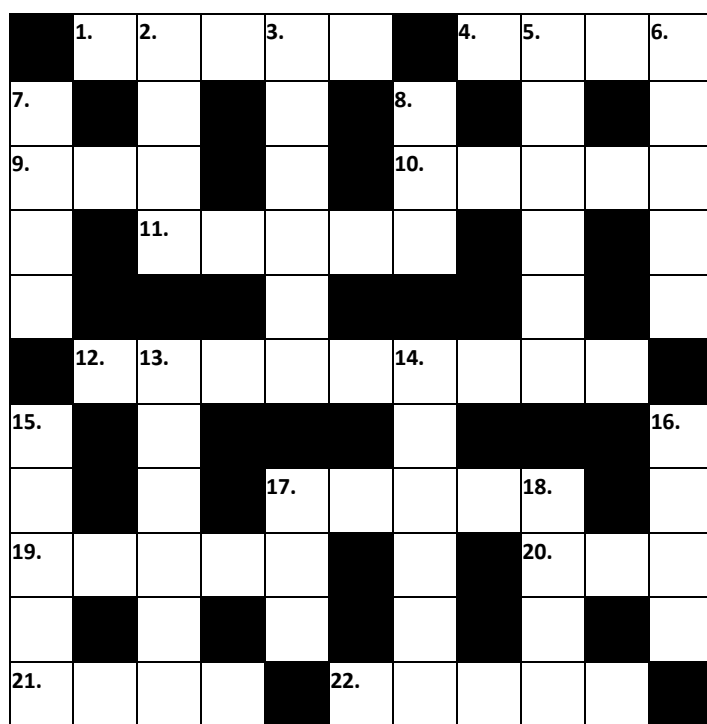
Cllr Meyer advised that he has now been allocated a new locality fund for 2021/22 and would welcome applications for funding.

*Meeting Closed at 21:50*

*Kevin Boardley, Proper Officer, Clerk to Walsham-le-Willows Parish Council*



# WALSHAM OBSERVER CROSSWORD



- 12. Each one has ill feeling for the host. (9)
- 17. After now it's more overdue. (5)
- 19. Her place among the expedition leaders was somewhere else. (5)
- 20. You can see a fool in loafers. (3)
- 21. Hasten, and remove the cardinals you strongly dislike. (4)
- 22. Are giants such crazy 'goers'?

## DOWN

- 2. Not quite the tare to rip out. (4)
- 3. Occupations found in extra desk duties. (6)
- 5. Canter around in a daze. (6)
- 6. Repair the area. (5)
- 8. The sailor goes up to leave the sinking ship. (3)
- 13. The centre was changed not long ago. (6)
- 14. Partner to a golden pear in the nursery. (6)
- 15. Observe the guard. (5)
- 16. The diner needs a face change. (4)
- 17. Allow to rent out the property. (3)
- 18. Walk about with a tailless dog. (3)

## ACROSS

- 1. Taste confusion of the country. (5)
- 4. Cease putting the jars back. (4)
- 9. Resort to keep half of the old Greek state. (3)
- 10. Separated by a piece. (5)
- 11. Subsequent question for the horseman. (5)



## Shine n Clean

Residential and commercial window cleaning.  
A reliable window cleaning service using the latest  
pure water and reach & wash cleaning system,  
leaving glass sparkling clean for weeks.  
No mess, no smears and no harmful chemicals

01359 259376

email: [shinenclean@mail.com](mailto:shinenclean@mail.com)

*Oil Fired Pressure Jet Boiler  
Servicing & Plumbing*



**ANDY'S**  
OIL BOILER  
SERVICES

**ANDY BACOS**

 07775 751303

 [andy.bacos@ntlworld.com](mailto:andy.bacos@ntlworld.com)

 Andy's Oil Boiler Services



## TJM Frames

Windows, Doors and  
Conservatories  
City & Guilds  
Trained Carpenter  
Installing windows since 1985

No showroom  
No gimmicks  
Quality craftsmanship  
at low prices

Rowan House Palmer Street Walsham-le-Willows IP31 3DA  
Telephone: 01359 259658

# SPORTING MEMORIES

When I attended the funeral of my wife's cousin Geoffrey Sparke at Rattlesden church last year it was mentioned that Geoffrey played a cricket match against Walsham school in 1949 in which he took all 10 wickets.

It was played in a meadow at Brook Farm, the outfield had been cut for hay and hay cocks were dotted about the outfield. Walsham batted first and were all out for 10 runs. I scored 4 and Albert Largent scored 3.

I remember going to Rattlesden in 1948 to play football, we lost that game as well. However, we won the return match 4-1. I met up with Geoff and his brother Dennis while playing football as well as socially, little did I know then I would marry their relation. in 1963.

As a 14 year old in 1949 I became involved with Walsham Football Club along with my friend Bryan Garrard who was a year younger. We became groundsman marking out the pitch on a Saturday morning and putting up the nets. Leaving school in the summer of 1950 I played for the club and Bryan started in the 1951/52 season.

During 1952 the Football and Cricket clubs amalgamated to form the Sports Club each contributing £60.00 to start the account. Bryan went on to be football secretary for 16 years then a further 24 years as Secretary of the Sports Club. We were both made Life Members in 1993 and when Bryan retired as Secretary in 1995 he was made a Life Vice President.

In May 2015 the Football Association presented me with an award for services to football in Walsham. I retired from my last position in October 2017 having been involved over a period of 68 years.

Football over the years has changed, not all for the good. In my opinion too much bad language is used. During my playing days more respect was shown to officials, two of them I remember. One Mr Buckle from Great Barton did not have a car and cycled to all his matches to officiate. The other being Alec Mapston from the Bury area.

*Hubby Frost*

## SEARCHING FOR WORDS

|   |   |   |
|---|---|---|
| D | I | P |
| E | S | A |
| T | A | R |

Starting with any letter and moving horizontally, vertically or diagonally, see how many words of three letters or more you can find, using each letter only once in each word.

There should be one nine letter word which is different in any other way..

Get 65 words and you are doing well.



## ROB WHEELER POTTER



**WALSHAM LE WILLOWS**  
**TEL: 01359 258167**



George Hill Units  
Stanton, IP31 2AD  
Now taking appointments  
Tel; 07769 330828  
Or download the app.  
[Barberjos.nearcut.com](http://Barberjos.nearcut.com)

## Sweep 'n' Clean

HETAS Registered  
Wood Burning Stove Installers  
Qualified Chimney Sweeps  
Bird Cows Fitted  
Gutter Clearing  
Driveway Power Washing  
Fully Insured  
FREE Site Survey



Email: [contactus@sweepnclean.co.uk](mailto:contactus@sweepnclean.co.uk)  
Web: [www.sweepnclean.co.uk](http://www.sweepnclean.co.uk)  
Office: 01359 232955



**Special cakes  
for  
special celebrations**

*Jean Barker* 01359 241135

[www.amazingcakesbyjean.co.uk](http://www.amazingcakesbyjean.co.uk)

# WILDLIFE IN JULY

In these summer months it is a great time to try and spot and maybe even be able to take a photo of Owls. During these time the chicks or Owlets are growing fast and are still reliant on the parents to bring them their food while they are learning to hunt for themselves. When Owls eat their prey it is often too dangerous for feathers/teeth/skulls and claws to pass through the digestive system, instead these parts of the prey are left in the gizzard. The gizzard then compacts these parts into a tight pellet which is then regurgitated by the Owl. These pellets are known as owl pellets which can usually be found on the ground under trees.

Another bird you may also see in flight and is rarely missed if it goes overhead is the Grey Heron. The Grey Heron can be found near to fresh water and also salt waters. The Grey Heron has a whopping wingspan of two metres and when standing is one meter tall! The Heron eats a variety of prey such as Frogs, Mice, Water Voles and a variety of fish, something ponds owners are very aware of! This Heron was the first breeding bird to be studied in depth by a man called Max Nicholson in 1928, this then lead to the founding of the British Trust for Ornithology.

You may see in your gardens or if you are out and about tiny Froglets. These tiny froglets are now ready to leave their watery nursery and come out onto land after absorbing their tails and growing legs and lungs. They will head for damp vegetation and feed on a variety of insects growing into the adult frogs we see in our gardens. Did you know when a frog catches its prey it blinks when it swallows? This blinking pushes the eyeballs downwards on top of the mouth helping its food get pushed down the throat! For all frog lovers out there the largest frog in the world lives in West Africa, it is called the Goliath Frog, these frogs are more than a foot in length and weigh more than seven pounds, which can be as much as a newborn baby! For us gardeners especially ones with Hosta's like me I think we could do with a few of these beasts in our back gardens. Our gardens are now looking rather colourful and the insects are busy collecting nectar, remember to regularly dead head flowers that have gone past their best, this will encourage the plant to flower more in an attempt to make seed, giving you a longer flowering season.

Angie Nice



*I've got it entered for Horticultural Show on 14th August, but I don't know how I'm going to get it to the Village Hall by then!*



# Langham Clinic.

Holistic Beauty & Complementary Therapies

Specialised treatments performed by highly trained & experienced therapists

Sports Massage - Pilates - Manicure & Pedicure  
Electrolysis - Red Vein Treatment - Skin Tag Removal  
Acupuncture - Oncology Massage - LaStone Therapy  
Nutritional Medicine - Aromatherapy - Reflexology  
Waxing - Mindfulness - Hypnotherapy - CBT  
Dr. Hauschka Treatments (Holistic face & body treatments)

Everything possible at Langham Clinic is organic, sustainable & carbon neutral

[www.langhamclinic.co.uk](http://www.langhamclinic.co.uk)  
Langham Grange, Stock Hill, Langham, IP31 3EE

Tel: 01359 258 700

## Inspirational Gardens Professionally Designed, Expertly Created

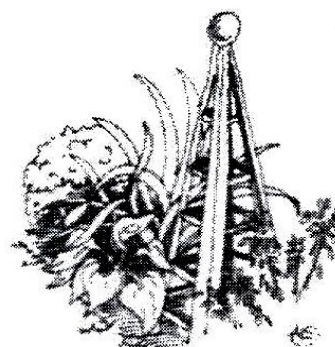
Want something fabulous but  
don't know where to start?

Contact me for a friendly,  
down to earth chat

01359 77 2017

[enquiries@plants-for-life.com](mailto:enquiries@plants-for-life.com)

  
**PLANTS FOR LIFE**  
HORTICULTURAL KNOWHOW



I'm qualified with a horticultural  
degree from Writtle College,  
have worked at the Beth  
Chatto Gardens and been  
designing gardens since 2002

[www.plants-for-life.com](http://www.plants-for-life.com)



# THE ZEPHYRS SKIFFLE GROUP

When Nev Ellis came out of the army in the mid 50s skiffle was hitting the charts with greats such as Lonnie Donegan. Nev had been playing with a group whilst serving in the forces and was very keen on forming a group in Walsham. Brian 'Boom' Debenham was a work mate and the first person he asked. He agreed, as he was already able to play the banjo well. I was next as I already had a guitar and could play most of the chords and could provide vocals.

You may wonder how we had these instruments to hand. When the Americans were over here they used to play in The Six Bells and The Blue Boar and we were taken in by the music they produced, so we obtained the instruments and copied what we heard from them.

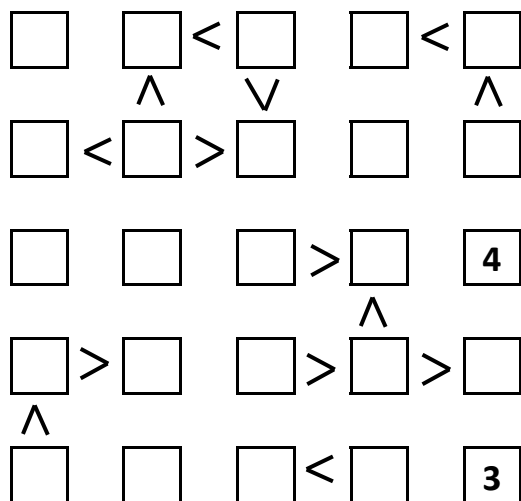
We now had three players and were looking for a washboard player and a tea-chest bass player. Bill Harris was the ideal man for the washboard as he was a very talented musician and could play almost any instrument. My brother Jack took on the tea-chest bass, which provided a booming bass effect.

We were now complete and ready to practice in each others' houses or sheds and before long were playing in pubs and at a number of events. We used to play at the Woolpit Swan on a Saturday night, in a big room above the bar. It was always very crowded and when everybody was dancing and jiving about the floor used to go up and down and beer would slop out of the glasses. They had to put Acrow props underneath for safety reasons.

The group went on to win The All-Suffolk Skiffle Contest which was held at Bury St Edmunds, and also had the honour of playing at The Cambridge Folk Festival. Our biggest regret was not taking up the offer to play at The 2 I's Coffee Bar in Soho where Tommy Steele, and several others, had been discovered; we hadn't got the transport or the funds to make it happen.

*Albert Largent*

## MORE OR LESS



**The numbers 1 to 5 should appear in each row and column.**

**The greater and less signs indicate the relative size of adjacent numbers.**





# Walsham Congregational Church

The Street, Walsham-le-Willows, Suffolk. IP31 3AZ  
Church Secretary (John Landymore) 01359 - 258986

## **Services for July**

God willing, we are open for worship each Sunday at 11.00 & 6.30 so why not come along? Please be assured of a warm welcome; it would be lovely to see you.

## **Why am I Spared?**

The practise of keeping a diary was once rather more common than it is today. There are several very well-known diaries that have been published over the years, such as those by Anne Frank and Samuel Pepys. The reading of these books can be both entertaining and helpful as so much can be learned from the experiences of others.

In Christian circles, the diary of Andrew Bonar, who was a Minister in Scotland during the nineteenth century, is very well known and it is challenging and profitable to read over the account he kept of his life and ministry. On April 29<sup>th</sup> 1884, Andrew Bonar made this entry, "Spared to see my thirty-eighth year, while others were taken". The reason that he wrote those words was because so many of his friends and family were taken away in death while still of a young age. Just consider the following examples: three of his siblings died in infancy, his father died when Andrew was just eleven years old, his own son, also called Andrew, died as a young child, his dear wife Isobel passed away in middle age and his good friend Murray McCh=eyne was taken before reaching his thirtieth birthday; a fact that he reflected upon regularly for many years.

As Mr. Bonar thought of the lives of others coming to an end so swiftly, he pondered carefully and seriously the question, "Why am I spared? What is the reason that I am not taken away?" The diary reveals that he meditated upon that question on more than one occasion. It is a question that it would be wise for all of us to consider. Ask yourself, "Why am I spared while others are taken and why has God allowed me to live so long when he has taken away friends and loved ones in the prime of life?" if you remain unconverted, it is because God in His mercy is giving you more time to be saved – just think how patient God has been as you could be in a lost eternity already.

The clear warning is that none have the guarantee of getting old and none have a guarantee of seeing tomorrow. In the light of reality, do not waste another moment in turning to the Lord Jesus Christ for Salvation.

---

**Behold, now is the accepted time;  
behold now is the day of salvation.** (II Corinthians 6:2)



# WALKS AROUND WALSHAM

## It's Not About Deer

The second walk starts in the village at the pound on the corner of Townhouse Road and Palmer Street. The pound is a brick enclosure, now without a gate, that was built during the Victorian era to house animals found loose around the village. They were released on payment of a fine. Turn into Jolley's Way and then immediately left, taking the track between hedge and ditch towards the two cottages. Just before Plantation Cottage turn right through the gateway and follow the footpath up the hill keeping the hedge on your left. This is Mill Track and once was a wide green lane. It's now ploughed to a very narrow path and can be awkward to walk on when it's slippery. No wide boundaries for wildlife here. The crops swaying in the breeze are like a sea of green now. The hedge is a mixture of hawthorn, blackthorn, hazel, ash and field maple. A good source of blackberries and sloes in the autumn. The path continues to climb. To your left is Folly Hall and somewhere around the highest point and close to the track was the position of a windmill, long since demolished. There is a pond on the other side of Folly Hall's drive. There are many of these ponds scattered around the fields. They are generally given over to wildlife now but were initially dug to provide water for the working horses that laboured up and down the fields. Ahead, the trees of Hartshall Farm come into view. Until recently this was a tree nursery with a reputation for providing unusual and rare species. There is now a maturing treeline that contains a wonderful variety of shapes and colours.

Cross the road passing Autumn House, this location is still known as Bribery in memory of the cottages that were here until recently. The track, now Hartshall Lane, heads downhill and is now wide and ditched on both sides, a real green lane. It was once the main route to Westhorpe. Part way along this track, and pointing in both directions is a footpath sign, but as no other track joins it here I have often wondered what the point of it is. The name Hartshall is a derivation of hoerdes haugh with roots possibly going back to Anglo Saxon times. It has nothing to do with deer (harts), although muntjac, roe deer, and even red deer can be seen in the area. Buzzards are common, there's a pair of barn owls and I've seen red kite too. Go over the increasingly rickety bridge, the stream is the same stream that flows through the village, then at last you have the shade and lush growth of the plantation of Hartshall Farm. Beyond this you emerge into the sunshine again. This part of the lane was hedged all the way to the road until a few years ago. The loss of habitat for the wildlife must have been devastating. There were masses of primulas and cowslips this year which were mowed unfortunately before the cowslips seeded. We will have to wait until next spring to find out how well they do.

You join the road at Botany, where last month's walk started. Turn right and head along the road on what was part of the old Hundred Lane. It is wide, ditched on both sides and the uncut verges are a mass of grasses, docks, sheep/cow parsley, nettles, buttercups and dog's mercury. The lone oak tree marks the sharp bend in the road, then turning right you leave the Hundred lane and pass clumps of pelargoniums, poppies and a few isolated trees clinging to the edge of the fields, almost ploughed under. Cross the stream, the same



stream as before and head uphill. There are often hares about here and if you're lucky you'll see King, a young shire horse being put through his paces pulling a carriage. To your left is a collection of willows around another of those field ponds. Carry on past three farmhouses. At the third, Crownland Farm, where there's an old water pump, turn right over the stile and follow the path along the fence, over the ditch and across the field alongside the hedge. As you reach the brow of the hill you can see all the way round from Palmer Street on the left, pass Cranmer Farm ahead to Hartshall Farm on the right. At the end of the field turn left and head back down the footpath towards Jolley's Way and the pound.

*Alison Martin*



**Hartshall Lane**

The  
**Old Tea Room**  
Veterinary Surgery

For a professional caring service

**Tel: 01359 241 761**

Station Road, Elmswell,  
Bury St Edmunds IP30 9HA

A member of Stowe Veterinary Group

**[www.stovevets.co.uk](http://www.stovevets.co.uk)**



# TWO SEA POEMS

## SEA PLEA

The sea is calling; I hear the roar  
Of the rampant waves on the shingled shore  
By the harbour walls where the coaches halt  
And many a savoury whiff of salt  
From the winkle counter winds its course  
And a man may sup on chips and sauce  
To the merry chug of pistons.

The chalets abound with burning skin  
And whimsical names like 'War Cry Tin'  
And over the bodies of bags and crisps  
Transistor wailings and sundry wisps  
Of candy floss are brought on the breeze  
To singular men with water skis  
Who scythe the middle distance.

I feel the pull of the piers again  
And the penny houses that hug the main  
And the Fun Arcades and fishing-lines  
And the bingo booths and juke-box shrines  
Where Troggs and Greasers have their lairs  
And the sea still calls but no one cares  
Or comes to its assistance.

*Daniel Pettiward*

## THE ALBATROSS

I sailed below the Southern Cross  
(So ran the seaman's song);  
A pestilential albatross  
Followed us all day long.

The creature's aspect was so grim,  
And it oppressed me so,  
I raised . . . then, on a sudden whim,  
I lowered my crossbow.

The weather grew exceeding thick;  
The sullen tempest roared.  
A dozen of the crew fell sick,  
The rest fell overboard.

The skies were so devoid of light  
We could not see to pray.  
The donkeyman went mad by night,  
The second mate by day.

We set the live men scrubbing decks,  
The dead man manned the pumps.  
The cabin steward changed his sex;  
The captain had the mumps.

The cargo shifted in the hold,  
The galley boiler burst.  
My hair turned white, my blood ran cold –  
I knew we were accursed.

I helped the purser dig his grave  
On the deserted poop;  
I leaped into the foaming wave  
And swam to Guadeloupe.

And there (he said) I nibbled moss  
Beside the stagnant lake . . .  
I should have shot the albatross,  
That was my big mistake.

*R P Lister*



**PETER GODDARD**

**Firewood**

Hardwood or softwood

Firewood & Kindling

Available all year

Tipper Delivery

01359 221287 07946 595126



**Animal Feed & Bedding**

**Pet Foods**

**Wild & Caged Bird Feed**

**Kindling, Logs, Charcoal**

**Compost**

**Flour, Free Range Eggs,**

**Porridge Oats, Local Honey & More!**

**Farmers Market every Saturday**

**Morning between 9.00 am – 1.00pm**

**Monday to Friday 8.30 am – 5.00 pm**

**Saturdays 8.30 am – 1.00 pm**

**01359 230277**

**[www.pakenhamwindmill.co.uk](http://www.pakenhamwindmill.co.uk)**

**[info@pakenhamwindmill.co.uk](mailto:info@pakenhamwindmill.co.uk)**

# w<sup>ell</sup> b<sup>o</sup>ans

*Your well being at our fingertips*

*Do you suffer with aches and pains? Fed up with taking pain killers?*

*Have you looked into the benefits of complementary therapies?\**

**Come and see us at Well Beans Complementary Therapy Practice**

**Just past the windmill going out of Ixworth.**

**Old Hall Farm, Thurston Road, Pakenham, IP31 2NG**

**Reflexology    Bowen Therapy (& Bowen children's clinic)**

**Seated acupressure massage**

**Bach flower remedies, Reiki & more**

**Tel: 01359 231652**

**[info@wellbeans.co.uk](mailto:info@wellbeans.co.uk)**

**Janette: 07841 430026**

**Jacky: 07725 172174**

**See [www.wellbeans.co.uk](http://www.wellbeans.co.uk) for more details of our therapies and prices**

**Mention this ad for 20% OFF first treatment**

*\*No change should be made to any medication; complementary therapies can help with many symptoms but are not a substitute for visiting your GP.*



# MUSICAL THEATRE

## Summer School

I am currently running classes which cover all elements of Musical Theatre and we practice all the disciplines - Singing, Acting and Dancing. My aim is to create a safe and fun environment for young people to grow in confidence whilst being creative and ultimately giving them the tools to go out in the world being able to use their voice.

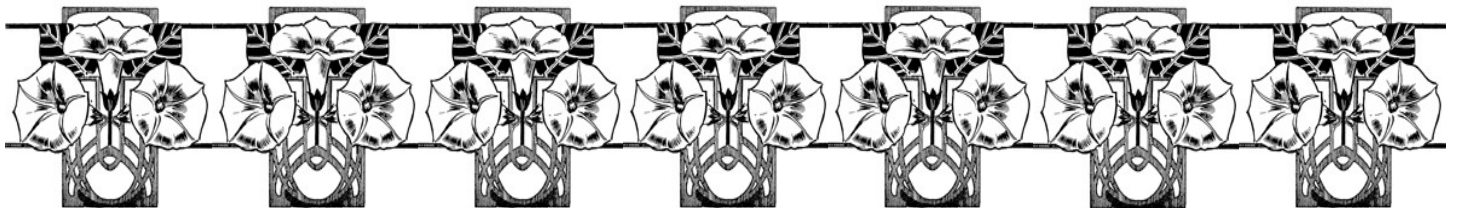
In addition I shall be running a Musical Theatre workshop for two weeks from the 26th of July. Come and join two professionally trained Musical Theatre performers for a workshop packed full of fun and activities! We will be learning songs, dances, puppetry, prop making and much more, whilst having fun and building confidence along the way. We will work towards putting on a show for the parents at the end of the week.

As for myself, I hail from the East Coast of Scotland and my first memories of childhood are going to ballet and tap classes at my local community hall. When I was 13, I moved to Glasgow to go to Boarding School to do Musical Theatre and later, at 18, I moved to London to train at Drama school. Since graduating I have been in several professional productions including a UK Tour of 'Rain Man' and 'Pippin' the Musical at the Southwark Playhouse in London. After moving to Walsham just before lockdown in March 2020 I have wanted to reach out to the community and put my skills to good use. I feel like the kids need a positive outlet for their energy, somewhere they can have fun, be free and build their confidence.

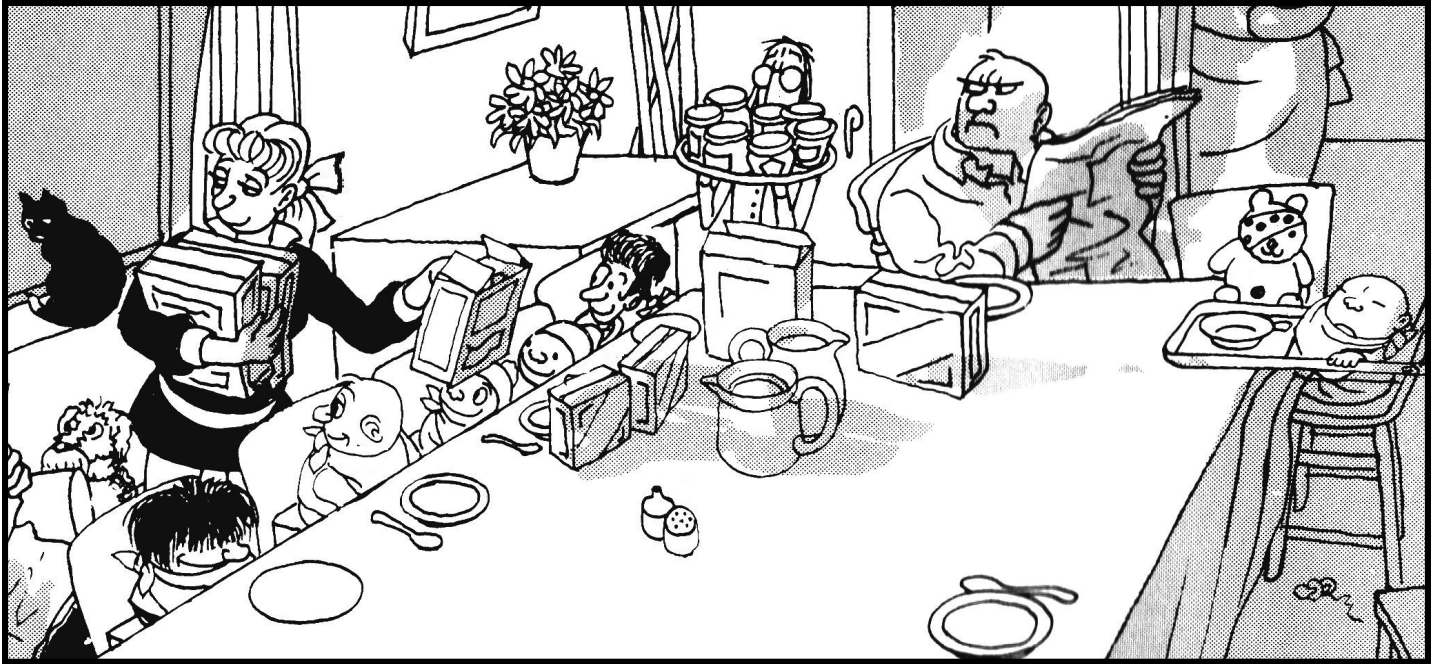
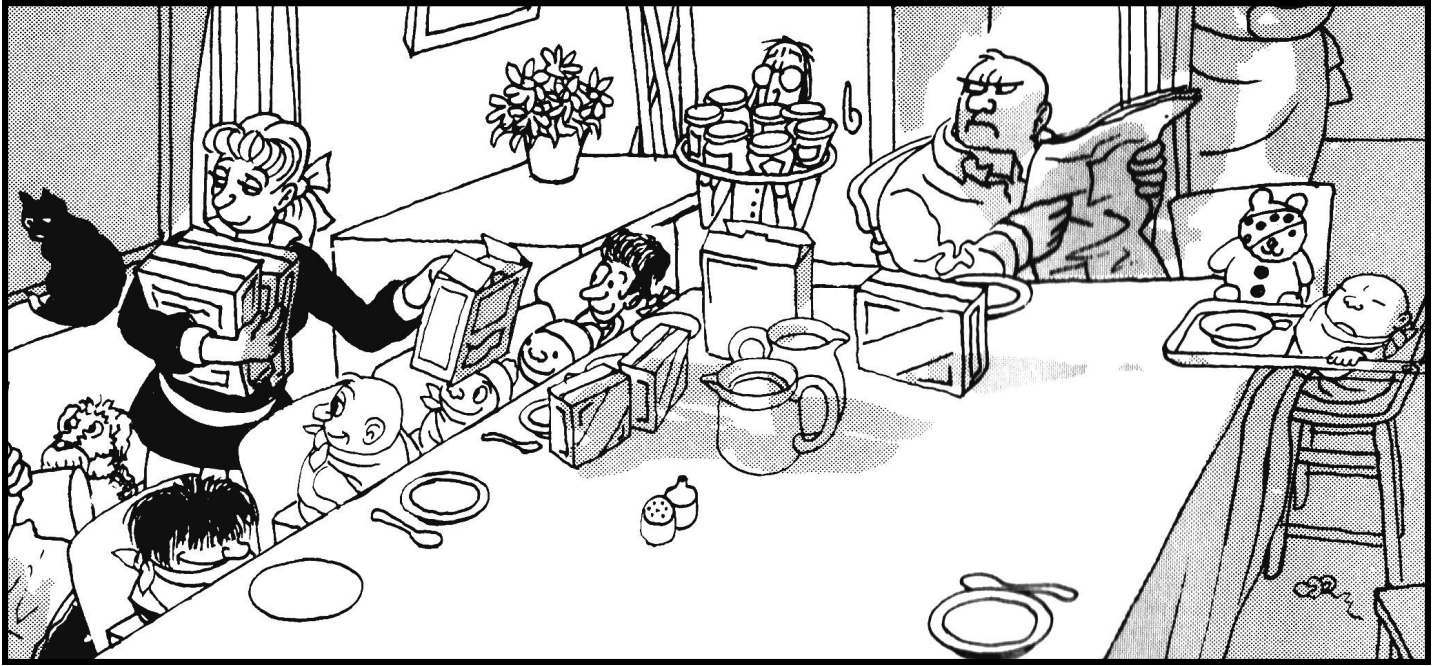
My special guest, Megan Armstrong, was in my year at college and since then has gone on to perform leading roles in; Cats The Musical, The Hired Man, The Producers, Avenue Q and more. She is also a recently qualified Yoga Instructor and Breath Coach so we will be implementing some of this into our Summer School to give the children tools to deal with any anxieties or feelings of overwhelm.”

**For details of workshop see page 16.** If you would like to reserve a place on the course or have any questions do email me at [mbbmusicaltheatre@gmail.com](mailto:mbbmusicaltheatre@gmail.com)

*Mairi Barclay*



# SPOT THE DIFFERENCE



There are ten differences between these two pictures, see if you can find them all before breakfast turns into a battleground!



The harvest moon appears in which month?



# CHANGES

Now and again, here and there, you come across something somewhere which stops you in your tracks, has you thinking “So what has been happening here?” It is the small scale domestic changes that I am thinking of, not the huge construction sites which have mushroomed around us and threaten to swamp small village communities.

Have you noticed the front doors freshly painted in bright colours or maybe replaced by modern designs, the newly paved driveway, the new garden gate, the repaired fencing? These are all relatively small projects, undertaken by individuals furloughed or temporarily out of work, like that little front garden of a house in The Street.

Time was there were overgrown shrubs and a collection of rangy perennials growing with gay abandon behind a fence covered in a dying scramble of Montana clematis. Suddenly, over night, it was all gone, leaving bare earth behind the unprotected spikes of rusting iron railings.

But time passes and the bare earth is transformed into a beach scene with a thick layer of shingle and the planting of two magnolias named Betty and Jane. Later still, the rust is removed from the fence before painting it a fresh shiny black while new top rails are fashioned to cover the exposed spiked railings.

This however is only the latest in a number of reconfigurations of the little garden over the years. First of all there was a grass lawn which was too small and awkward to cut effectively with a lawn mower and long before the advent of artificial turf! Then followed bare ground with two wooden planters created from a halved beer barrel and filled with a labour intensive sequence of annuals until the tubs rotted and fell apart. Birds then colonized the area with seeds to create a semi-wild natural space with foxgloves, hollyhocks, mulleins, willowherb, evening primrose and wild strawberry. Later a hornbeam sapling, sweetbriar rose, cotoneaster and fuchsia came to overwhelm the area.

Then suddenly it was change! Life had been at a standstill for so long. A sense of disheartenment and resignation approaching despair had almost overwhelmed us, leaving us powerless to go places, unable to do things. But time passes, nothing stands still whatever the problem. Observing our surroundings, acknowledging our neighbours, thankful for the help of Peter and Kenneth, being aware of nature and the passage of seasons helps to keep us grounded in difficult, restrictive times.

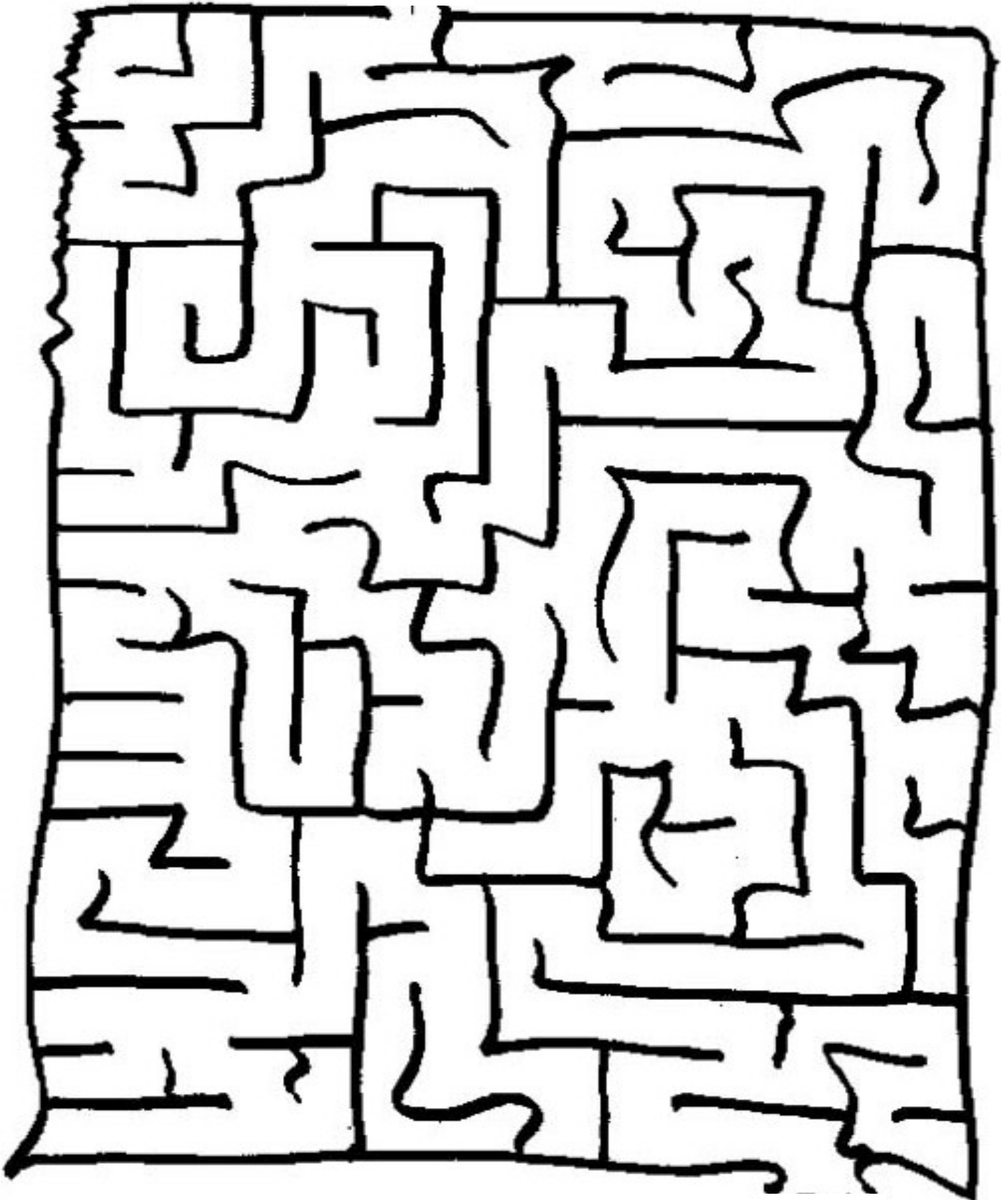
*Bor Rebrab*





# SPACE FILLER MAZE

**START**



**END**

Which is the most popular flavour for ice-cream?

# RAIN STOPS PLAY

Unsurprisingly the damp weather we have all experienced in May and June, despite being good for a lush outfield, has curtailed a few fixtures for all levels at the Cricket Club.

Our youngest players in All Stars and Dynamos have seen a few Friday sessions washed out, but when we have managed to dodge the grey skies, the children have relished a Friday evening run around, cheered on by a healthy crowd of parents and grandparents. Friday nights at the Sports Club have become quite the social fixture, with live music and a BBQ on the go.

Both the Under 9s and U11s have shown a great team ethos in Pairs Cricket victories over Mellis, Woolpit and Mildenhall.

The Under 15s have been competing exceptionally well with some strong local sides, and narrowly lost out in the quarter finals of the Suffolk Cup. Chasing 108 off 20 overs, the team fell just 3 runs short. Experience of this competitive cricket will serve the side well.

In the Senior section, results have been varied for both the Saturday and Sunday XIs, with both sides oscillating between victory and defeat each week, unable to put together the sustained run of results that would see them move up beyond mid-table in their leagues.

On Saturday, it has often been a case that the middle-order batting has not been able to sustain the starts offered, which has led to relatively low-scoring returns. Oli Jackson continues to lead the way at the top of the order with an average of 51.5; notable was his 87 in the loss against Abberton. With the ball, Ashley Forbes leads the wicket takers (20 wickets), including 5 for 58 against Easton. Mark Rotheron has also taken key wickets with his tight line and length bowling.

The experienced Neil Baker has led the batting charge on Sunday. An excellent 87 away to Newmarket set the side up for a great win on the road. Ned Campbell returned to form with 77 against Stowmarket, and Luke Ridding scored 54 in a narrow loss to Haverhill. Jono Boucher and Finn Daly have shown that pace is a key differentiator at this level, and have picked up regular wickets. Boucher's strike rate of 8.5 balls per wicket is exceptional.

Looking ahead into July we are looking forward to the sun baking those pitches dry for the runs to flow.

*James French*





## SPORTS CLUB TRAILER GIG

On Saturday 17th July the Sports Club is once again hosting a trailer gig featuring B4 one of the very best cover bands in East Anglia. The gig is in aid of St Nicholas Hospice care which is a great local charity. It will be slightly different this year due to Covid rules but everyone who has been to our Friday night music night will know we have great time whilst obeying all the rules so please come along and support a great charity.

*Gordon Ross*



## WALSHAM OBSERVER SU-DOKU

|   |   |   |   |   |   |   |   |   |
|---|---|---|---|---|---|---|---|---|
| 6 |   |   |   |   |   | 1 |   | 9 |
|   | 5 | 7 |   | 6 |   |   | 8 |   |
| 8 |   |   |   |   | 1 |   | 3 |   |
|   |   | 4 | 5 |   | 9 |   |   |   |
|   | 7 |   |   | 3 |   |   | 4 |   |
|   |   |   | 4 |   | 2 | 8 |   |   |
|   | 3 |   | 6 |   |   |   |   | 1 |
|   | 6 |   |   | 5 |   | 7 | 9 |   |
| 7 |   | 5 |   |   |   |   |   | 8 |

For the uninitiated, the rules of So-Doku are very simple.

Each row, column and large square must contain the numbers 1 to 9 inclusive.

It's as simple as that, but you must apply logic to find which number goes where.

So, beginner or expert, happy hunting!



# THE INVISIBLE CYCLIST

I will be one of the first to agree that some cyclists are 'the pits'. The ones who cycle two-abreast when a motorist is trying to get past. I once followed a group cycling three-abreast, with the outer one taking a drink from his bottle. Then there are the ones who pedal as fast as they can, meaning that an overtaking car will have to travel that much further before finishing overtaking. I could go on; but I must include those who use their mobile phones - hand-held - whilst riding - just think what they think if they see an approaching motorist doing the same thing. Pots and kettles spring to mind. My last experience of this was in Cambridge during rush hour.

Many motorists treat me with respect when I am cycling, but there are a minority who either cannot see me - in which case they shouldn't be driving - or feel that I am unworthy of the common courtesies.

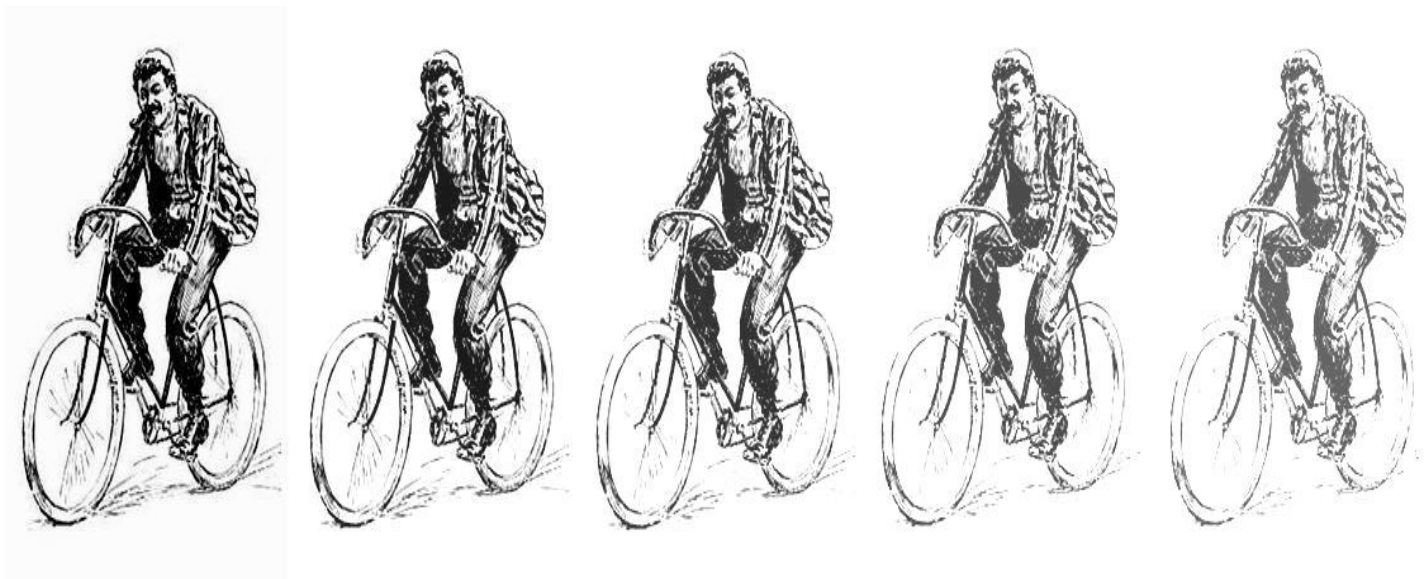
When driving and finding an obstruction on my side of the road when another vehicle is approaching from the opposite direction I, like most other drivers, will slow down, or stop, to let the other motorist through. Invariably I will receive a polite hand signal to express their thanks. When I do the same thing when cycling a significant minority pay no attention to my courtesy at all.

One other gripe - whilst in a curmudgeonly mood. A few motorists underestimate the speed that cyclists move at and dangerously overtake when approaching a bend. On rather too many occasions an 'offeding' motorist has only just evaded a humiliating crash when performing such a manoeuvre.

Undertaking - as opposed to overtaking - is frowned upon between drivers, since a driver is not expecting to find a car coming up on their nearside - unless driving in the out lane of a multi-lane highway. Once or twice a daredevil cyclist has 'gone for the gap', rather than going for the easier option, with the wider gap! Whoops, 'could be nasty!'

Maybe it's best to treat cyclists as you would a horse and rider, by giving them plenty of width (a metre and a half is recommended) and overtaking 'with care'

*Rouge Chaussettes*





# COMMUNITY COUNCIL FOOD BANK



Please donate long life foods and personal hygiene products to our collection point in St. Mary's Church (just inside the main doors on the right or in the porch if the doors are locked) or contact us to arrange a collection.

To help, get involved or to discuss your needs please contact Amanda on 01359 258646 or email [wlwcommunitycouncil@outlook.com](mailto:wlwcommunitycouncil@outlook.com)



## REGULAR

### MONDAY

Community Lunch Village Hall  
2nd Monday 12:45pm

Theatre Classes Village Hall  
3:15pm till 6:15pm

### TUESDAY

Post Office Van Village Hall  
11:00am till Noon

### WEDNESDAY

Positive Steps Village Hall  
11:30am till 12:30pm

### THURSDAY

Coffee Shop Village Hall  
10:30am till Noon

Post Office Van Village Hall  
11:00am till Noon

Yoga Village Hall  
7:15 pm till 9:15pm

## EVENTS

### FRIDAY

### SATURDAY

Pop-up Shop Village Hall  
Last Saturday in the month

### SUNDAY

# ACCOUNTS PRESENTED AT 2021 AGM

**TJM DOUGHERTY**  
Chartered Accountant

7 The Coppice  
Great Barton  
Suffolk  
IP31 2TT  
Tel: 01284 788440  
Mob: 07949 947946  
TJMD@dougherty.me.uk

## MEMORIAL HALL WALSHAM LE WILLOWS

### INDEPENDENT EXAMINER'S REPORT TO THE TRUSTEES

I report on the financial statements for the year ended 31 December 2020 which are attached.

This report is made solely to the charity's trustees, as a body, in accordance with section 145 of the Charities Acts 2011 and regulations made under section 145(5)(b) of that Act. My work has been undertaken so that I might state to the charity's trustees those matters I am required to state to them in an Independent Examiner's report and for no other purpose. To the fullest extent permitted by law, I do not accept or assume responsibility to anyone other than the charity and the charity's trustees as a body, for my work, for this report or the opinions I have formed.

#### Respective responsibilities of trustees and examiner

The charity's trustees are responsible for the preparation of the financial statements, and they consider that an audit is not required for the year (under section 144 of the Charities Act 2011 (the Act) and that an independent examination is needed.

It is my responsibility to:

- examine the financial statements (under section 145 of the Act);
- follow the procedures laid down in the General Directions given by the Charity Commission (under section 145(5)(b) of the Act); and
- to state whether particular matters have come to my attention.

#### Basis of independent examiner's report

My examination was carried out in accordance with General Directions given by the Charity Commission. An examination includes a review of the accounting records kept by the charity and a comparison of the financial statements presented with those records. It also includes consideration of any unusual items or disclosures in the financial statements, and seeking explanations from the trustees concerning any such matters. The procedures undertaken do not provide all the evidence that would be required in an audit, and consequently no opinion is given as to whether the financial statements present a "true and fair view" and the report is limited to those matters set out in the statement below.

#### Independent examiner's statement

In connection with my examination, no matter has come to my attention:

(1) which gives me reasonable cause to believe that in any material respect the requirements:

- to keep accounting records in accordance with section 130 of the Act and;
- to prepare financial statements which accord with the accounting records and comply with the accounting requirements of the Act have not been met; or

(2) to which, in my opinion, attention should be drawn in order to enable a proper understanding of the financial statements to be reached.

Signed: *TJM Dougherty*

Dated: 4 March 2021

Tracy Dougherty, FCA



TJM Dougherty is the trading name of TJM Dougherty Ltd  
Registered in England and Wales Co no: 7486117. Registered office: as above. VAT no: 988 1397 57



**Walsham Le Willows Memorial Hall**  
**Income & Expenditure Accounts - Year Ending 31/12/20**

| <u>Income</u>             | <u>31.12.20</u>  | <u>31.12.19</u>  |
|---------------------------|------------------|------------------|
| Bottle / Paper Bank       | 1,554.42         | -                |
| Bowling Green Rent        | 65.63            | 300.00           |
| Coffee Shop               | 1,372.69         | 2,020.32         |
| Community Council         | -                | -                |
| Community Lunch           | 373.00           | 1,050.00         |
| Cycle Book Sales          | -                | 18.62            |
| Cycle Tour                | -                | 1,183.80         |
| Donations                 | 6,630.71         | 2,039.34         |
| Fundraising Events        | -                | 1,707.30         |
| Gift Aid                  | -                | -                |
| Grants                    | 10,000.00        | -                |
| Hiring Charges            | 1,516.00         | 5,006.00         |
| Interest                  | 6.20             | 26.88            |
| Sundry Income             | -                | 103.51           |
| <b>Total Income</b>       | <b>21,518.65</b> | <b>13,455.77</b> |
| <b><u>Expenditure</u></b> |                  |                  |
| Cleaning                  | 530.05           | 357.79           |
| Coffee shop exp           | -                | 86.10            |
| Community Council         | -1,383.36        | -1,093.76        |
| Cycle Books               | -                | -                |
| Electricity               | 3,388.94         | 3,409.00         |
| Fire Protection           | 323.36           | 406.85           |
| Fundraising Events        | -                | 339.31           |
| Grant repaid              | -                | 10,000.00        |
| Insurance                 | 1,232.04         | 1,206.87         |
| Perfroming Right Society  | -                | 142.20           |
| Rebuilding Project        | 8,829.87         | 3,463.83         |
| Refuse                    | 255.00           | 248.00           |
| Repairs & Renewals        | 3,989.75         | 1,067.62         |
| Sundry Expenses           | 4.08             | 235.00           |
| Unknown                   | -                | 62.00            |
| Telephone                 | -                | 38.65            |
| Bank charges              | -                | 15.00            |
| Accountancy fees          | 417.00           | 330.00           |
| Licences                  | 70.00            | 20.00            |
| Water                     | 571.63           | 99.46            |
| Unaccounted for losses    | -810.64          | 3,739.74         |
| <b>Total Expenditure</b>  | <b>17,417.72</b> | <b>24,173.66</b> |
| Surplus                   | 4,100.93         | -10,717.89       |
| Balance b/f               | 11,825.85        | 22,543.74        |
| <b>Balance c/f</b>        | <b>15,926.78</b> | <b>11,825.85</b> |
| Cash                      | 72.22            | -                |
| Current a/c               | 13,543.75        | 6,949.46         |
| Building a/c              | 2,310.81         | 4,876.39         |
| Deposit a/c               | -                | -                |
| <b>Bank Balance</b>       | <b>15,926.78</b> | <b>11,825.85</b> |

**Walsham Le Willows Community Council**  
**Income & Expenditure Accounts - Year Ending 31/12/20**

| <u>Income</u>             | <u>31.12.20</u> | <u>31.12.19</u> |
|---------------------------|-----------------|-----------------|
| Eastern Angles Play       | -               | 895.00          |
| Unknown Cash paid in      | -               | 1,979.51        |
| Food bank donations       | 1,420.00        | -               |
| Interest                  | 0.73            | 0.42            |
| Hall Hire                 | 125.00          | 400.00          |
| Observer Adverts          | 2,627.00        | 1,199.00        |
| Observer Income           | 155.00          | 254.00          |
|                           | -               | -               |
| <b>Total Income</b>       | <b>4,327.73</b> | <b>4,727.93</b> |
| <b><u>Expenditure</u></b> |                 |                 |
| Cinema                    | -               | -               |
| Eastern Angles            | -               | 649.00          |
| Fire Protection           | -               | 95.01           |
| Lottery Licence           | -               | -               |
| Maintenance               | -               | 105.00          |
| Memorial Village Hall     | 1,383.36        | 1,093.76        |
| Observer:-                |                 |                 |
| Materials                 | 520.94          | 1,047.01        |
| Expenses                  | 33.00           | 820.43          |
| Printing                  | 1,704.08        | -               |
| Clerk Exdpenses           | -               | 96.00           |
| Sundry Expenses           | -               | 44.76           |
| Water                     | -               | 79.57           |
| Accountancy fees          | 375.00          | -               |
| Food bank expenses        | 110.77          | -               |
| <b>Total expenditure</b>  | <b>4,127.15</b> | <b>4,030.54</b> |
| Surplus                   | 200.58          | 697.39          |
| Balance b/f               | 3,996.19        | 3,298.80        |
| <b>Balance c/f</b>        | <b>4,196.77</b> | <b>3,996.19</b> |
| Cash                      |                 |                 |
| Current a/c               | 3,911.33        | 3,711.18        |
| Deposit a/c               | 285.44          | 285.01          |
|                           | -               | -               |
| <b>Bank Balance</b>       | <b>4,196.77</b> | <b>3,996.19</b> |

I have prepared the accounts of Walsham le Willows Community Council as required by the Trustees. In my opinion the Receipts and Payment Account is in accordance with the records produced to me.

  
**Tracy Dougherty FCA**

7 The Coppice  
Great Barton  
Bury St Edmunds  
Suffolk IP31 2TT

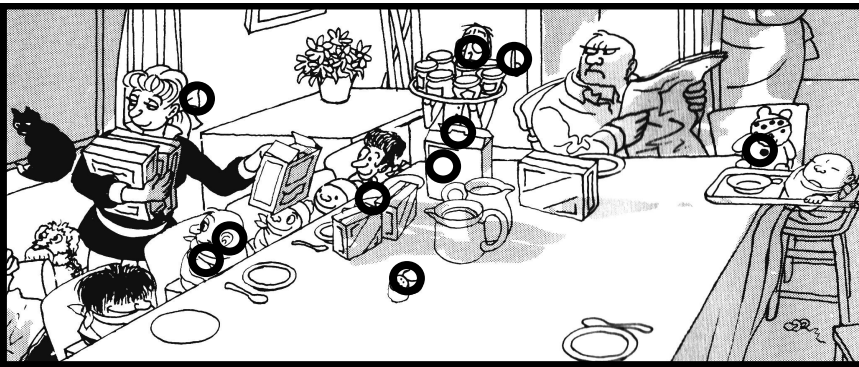
4 March 2021

# ALL THE ANSWERS

## Page Bottom Quiz

1. Nashville, 2. 99, 3. The Monkees, 4. Wild Thing, 5. The Smurfs, 6. Newcastle, 7. Doncaster, 8. 6, 9. Pole vault, 10. Table Tennis, 11. John Wayne, 12. Officer Dibble, 13. Ridley Scott, 14. The Hurt Locker, 15. Road Runner, 16. Silver, 17. 7, 18. Willow, 19. Avocet, 20. 13, 21. 7, 22. Portuguese, 23. Cornwall, 24. The Po, 25. Kentucky, 26. Goulash, 27. Choux, 28. Sheep Stomach, 29. Black cherries, 30. Lea & Perrins, 31. Dan Brown, 32. Venice, 33. Perseus, 34. Swiss, 35. Mona Lisa, 36. Leon Trotsky, 37. The White Star Line, 38. Charles I, 39. The Alamo, 40. Mahatma Gandhi, 41. Vitamin C, 42. September, 43. Mr Bumble, 44. Vanilla, 45. Enid Blyton, 46. Igor, 47. Truffles, 48. Morris, 49. Paris, 50. Newmarket

## Spot the Difference



## More or Less

|   |   |   |   |   |
|---|---|---|---|---|
| 5 | 3 | 4 | 1 | 2 |
| 2 | 4 | 1 | 3 | 5 |
| 1 | 5 | 3 | 2 | 4 |
| 3 | 2 | 5 | 4 | 1 |
| 4 | 1 | 2 | 5 | 3 |

## Su-Doku

|   |   |   |   |   |   |   |   |   |
|---|---|---|---|---|---|---|---|---|
| 6 | 4 | 3 | 2 | 8 | 5 | 1 | 7 | 9 |
| 1 | 5 | 7 | 9 | 6 | 3 | 2 | 8 | 4 |
| 8 | 2 | 9 | 7 | 4 | 1 | 5 | 3 | 6 |
| 2 | 8 | 4 | 5 | 1 | 9 | 3 | 6 | 7 |
| 5 | 7 | 1 | 8 | 3 | 6 | 9 | 4 | 2 |
| 3 | 9 | 6 | 4 | 7 | 2 | 8 | 1 | 5 |
| 9 | 3 | 8 | 6 | 2 | 7 | 4 | 5 | 1 |
| 4 | 6 | 2 | 1 | 5 | 8 | 7 | 9 | 3 |
| 7 | 1 | 5 | 3 | 9 | 4 | 6 | 2 | 8 |

## Searching for Words

|        |       |        |                       |        |       |
|--------|-------|--------|-----------------------|--------|-------|
| Aid    | Aide  | Aides  | Aids                  | Arse   | Arsed |
| Asp    | Dear  | Dears  | Die                   | Dies   | Diet  |
| Diets  | Dip   | Dips   | Ear                   | Ears   | East  |
| Eat    | Eats  | Eta    | Etas                  | Idea   | Ideas |
| Par    | Pars  | Past   | Paste                 | Pasted | Pie   |
| Pied   | Piste | Pisted | Raid                  | Raids  | Raise |
| Raised | Rap   | Rapid  | Rapids                | Raps   | Rasp  |
| Rat    | Rate  | Rated  | Rates                 | Said   | Sap   |
| Sat    | Sate  | Sated  | Sea                   | Sear   | Seat  |
| Set    | Side  | Sip    | Spa                   | Spar   | Star  |
| Tar    | Tars  | Tea    | Tear                  | Tears  | Teas  |
| Ted    | Teds  | Tsar   | <b>Disparate (70)</b> |        |       |

## Crossword

|   |   |   |   |   |   |   |   |   |   |   |
|---|---|---|---|---|---|---|---|---|---|---|
|   | S | T | A | T | E |   | S | T | O | P |
| I |   | E |   | R |   | T |   | R |   | A |
| S | P | A |   | A |   | A | P | A | R | T |
| L |   | R | I | D | E | R |   | N |   | C |
| E |   |   |   |   | E |   |   | C |   | H |
|   | P | R | E | S | E | N | T | E | R |   |
| W |   | E |   |   |   | U |   |   |   | C |
| A |   | C |   | L | A | T | E | R |   | A |
| T | H | E | R | E |   | M |   | O | A | F |
| C |   | N |   | T |   | E |   | V |   | E |
| H | A | T | E |   | O | G | R | E | S |   |

## **USEFUL TELEPHONE NUMBERS**

|  |  |   |   |
|--|--|---|---|
| <b>Community Council Secretary</b><br><b>Tara Campbell</b> | <b>01359-259519</b>                        | <b>Surgeries</b><br><b>Ixworth</b>                      | <b>01359-230252</b>   |
|  |  | <b>Stanton</b>  | <b>01359-251192</b>   |
| <b>Police</b>  |  | <b>Botesdale</b>  | <b>01379-898295</b>   |
| <b>Suffolk Police</b>                                      | <b>01473-613500</b>                        | <b>Woolpit</b>  | <b>01359-240298</b>   |
| <b>Stowmarket</b>  | <b>01473-383400</b>                        |   |   |
|  |  | <b>Parish Council Chair</b><br><b>Richard Belson</b>    | <b>01359-258868</b><br><b>richardbelson@</b><br><b>btinternet.com</b> |
| <b>Neighbourhood Watch</b><br><b>wlmhw@gmail.com</b>       |  | <b>Parish Council Clerk</b><br><b>Kevin Boardley</b>    | <b>parishclerk@</b><br><b>walsham-le-</b><br><b>willows.org</b>       |
| <b>David Murray</b>  | <b>01359-258646</b>                        |   |   |
| <b>Rev. Philip Merry</b>                                   | <b>01359-258806</b><br><b>07526-271784</b> |   |   |
|  |  | <b>District Councillor</b><br><b>Richard Meyer</b>      | <b>01359-251760</b><br><b>07771-703668</b>                            |
| <b>Anglian Water</b><br><b>Emergencies (24hr)</b>          | <b>08457-145145</b>                        | <b>County Councillor</b><br><b>Mrs Jessica Flemming</b> | <b>01449-711065</b>   |
| <b>Accounts</b>  | <b>0800-919155</b>                         | <b>Suffolk County Council</b>                           | <b>03456-066067</b>   |
| <b>Eastern Electricity</b>                                 | <b>0800-7838838</b>                        | <b>Member of Parliament</b><br><b>Jo Churchill</b>      | <b>0207-2198487</b>   |
| <b>British Telecom</b><br><b>Customer Service</b>          | <b>150</b>                                 |   |   |
| <b>Line Faults</b>   | <b>151</b>                                 |   |   |

## **VILLAGE ORGANISATION CONTACTS**

**Allotments Group**  
**Alison Findlay 07704311468**  
**milcroft66@gmail.com**

**Women's Institute**  
**Pearl Cobbold 01359-259729**  
**cobboldpearl@aol.com**

**History Group**  
**Frances Jenner 01359-259242**  
**frances.jenner@hotmail.com**

**Horticultural Show**  
**Judith Harlow 01359-258251**  
**Judith@gharlow.plus.com**

**Sports Club**  
**Mike Powles 07379089890**  
**mike.powles@btconnect.com**

**Walsham Wild Wood**  
**Lorna MacKinnon 259140**  
**makinnonlorna@gmail.com**



## **Notice from Walsham le Willows Parish Council**

# **CORONAVIRUS**

### **Register for Vulnerable People & Volunteers**

**The Parish Council** are in the process of building confidential registers of vulnerable people in the village and of volunteers who will make themselves available to assist where required. Obviously information from these registers will need to be shared appropriately but with due regard to General Data Protection Regulations.

**Priority** will be given to those older people who are living alone (or elderly couples) without nearby family support. The aim is simply to ensure that no-one in the village is left alone without support as evolving government advice (or orders) are put into practice.

Please contact the Clerk preferably by email (see below) to advise any of the following:

If you need support

If you know someone who needs support

If you are willing to volunteer to support someone

If you are already supporting someone

This information will greatly assist the Parish Council with co-ordination of responses and is especially important if someone is living alone even if the only requirement is to keep a close eye.

Kevin Boardley | Clerk to Parish Council | Walsham le Willows

Send email to | [clerk@walshampc.myzen.co.uk](mailto:clerk@walshampc.myzen.co.uk)

Or telephone | 01359 259 794 (please leave a message with name and number)

If you do not have an email account or need help, do ask someone to make contact on your behalf.